



**CENTRAL FLORIDA**  
**MPO**  
**ALLIANCE**

## Regional Indicators

A Report on Transportation System  
Indicators for the Central Florida MPO Alliance

June 2014



## Table of Contents

---

### EXECUTIVE SUMMARY

BACKGROUND.....	2
Key Findings .....	2
About the CFMPO Alliance .....	4



### REGIONAL PROFILE

Population .....	5
Employment and Unemployment .....	6
Hotel/Motel Rooms.....	7
Licensed Drivers .....	8
Registered Vehicles .....	8

### HIGHWAY STATISTICS

Local Road Mileage.....	9
State Road Mileage.....	9
Vehicle Miles Traveled.....	10
Gasoline Consumption and Pricing .....	11
Diesel Consumption and Pricing .....	12
Major Roadway Traffic Counts .....	13



### HEALTH AND SAFETY STATISTICS

Automobile Safety.....	20
Pedestrian Safety.....	21
Bicyclist Safety.....	22
Air Quality Monitoring .....	23



### TRANSIT STATISTICS

LYNX .....	24
LakeXpress.....	24
Space Coast Area Transit.....	25
Votran .....	25
Citrus Connection .....	26
Polk County Transit Services .....	27
Sun Tran.....	27

### AVIATION, RAIL, SEA, AND SPACE PORT STATISTICS

Orlando International Airport (MCO).....	29
Orlando-Sanford International Airport (SFB) .....	30
Melbourne International Airport (MLB) .....	30
Daytona Beach International Airport (DAB) .....	31
Passenger Rail Service .....	32
Port Canaveral .....	33
Space Launches .....	34



## Executive Summary

---

Transportation is a critical part of our lives. The quality of life and the economic vitality of our communities depend on an individual's access to work, education, health services and other destinations. The condition of our roads, walkways, transit, runways, and other transportation features directly affects the well being of our businesses and residents, as well as visitors.

The Central Florida Metropolitan Planning Organization Alliance (CFMPOA) is a coalition of Metropolitan Planning Organizations (MPOs) and Transportation Planning Organizations (TPOs) committed to addressing transportation challenges on a regional basis. The purpose of this report is to provide an overview of the transportation systems within the CFMPOA region and how they are affected by conditions such as the economy, population growth, technology, travel behavior, and funding. The goal is to assist CFMPOA region's policymakers and planning entities by disseminating information about key factors and emerging issues that impact Central Florida's transportation needs.

### Methodology

This report was prepared by Metroplan Orlando staff to establish a solid foundation of data to inform future policy decisions. The Regional Indicators report includes the latest data and information available at the time of publication for the various indicators used to measure transportation system activity over a five-year period. The beginning and ending years may vary for different indicators, depending on the data available.

Data was provided by several local and state agencies, including the Florida Department of Transportation, Florida's Turnpike Enterprise, and the Florida Department of Highway Safety and Motor Vehicles. Additional information was provided by the Florida Energy Office, the Florida Department of Environmental Protection, the Florida Department of Business and Professional Regulation, and the Florida Department of Revenue.

Local agencies that provided information include the Orlando-Orange County Expressway Authority, Central Florida Regional Transportation Authority (LYNX), LakeExpress, Space Coast Area Transit, Votran, Citrus Connection, Polk County Transit Services, Sun Tran, Greater Orlando Aviation Authority, Sanford Airport Authority, Kissimmee Gateway Airport, Melbourne International Airport, and the Daytona Beach International Airport. The Federal Aviation Administration, Amtrak, the U.S. Census Bureau, the University of Florida's Bureau of Economic and Business Research, the Florida Agency for Workforce Innovation, the Texas Transportation Institute, Space Florida and the Canaveral Port Authority provided additional information.

The CFMPOA would like to express appreciation to all these agencies for their assistance. The material contained in this report may be freely quoted with appropriate acknowledgement.

## Key Findings

The 2009-2013 Regional Indicators report identifies several major trends and travel implications for the CFMPOA region. These include a growing and more diversified population; increasing visitor impact; aging infrastructure; concerns with pedestrian and bicyclist safety; and volatile revenues. This Executive Summary outlines the areas addressed in *Regional Indicators* and highlights some key findings.

### Demographics

As of 2013, the population of the CFMPOA region had grown to 4,327,194, a 1.6% increase over 2012. The median age continues to increase -- up to 44.1 in 2012, compared to 43.5 in 2011. The 18-24 age group is the biggest, which could be attributed to a large number of higher-education campuses in our area and high employment in the arts, entertainment, and tourism sectors. (Chapter 1)

### Visitor Impact

The area saw definite signs of economic recovery. Tourism in the Orange, Seminole, and Osceola counties was impressively strong in 2012, setting a record. The area hosted 57.1 million visitors, an increase of 3.6 % over the same period last year, or an increase of 1.9 million visitors.

During that same period, Central Florida's major airports and seaport reported a level off in passenger counts, which also reflects healthy tourism in the state. Although Orlando International Airport continues to see a decrease in total passengers (1.5% decrease), Orlando-Sanford and Melbourne International Airports continue to experience a strong increase (average 9% increase). Although Port Canaveral saw a significant passenger increase in 2012, the numbers dipped by 7 percent in FY2013. (Chapter 5)

### Travel Trends

The local economy was still looking for the signs of recovery normally reflected in area travel trends. In 2012, the CFMPO region saw almost no change in the number of vehicles miles traveled or gasoline consumption. The same could be said for our major roads. The average daily traffic count on Turnpike, U.S.17-92, I-75, and U.S.192 changed by less than 2 percent. S.R.528 was the only road that saw a significant increase in vehicle numbers with a 10 percent over last year's numbers. (Chapter 2)

### Safety

Safety continues to be a factor that needs improvement in our transportation system. The area continues to experience an increase in vehicular crashes. In 2013, we saw a 24 percent increase over last year. Automobile fatalities increased by 7 percent during this time period, along with bicyclist fatalities of 80 percent. Bicyclist injuries have doubled in the region since 2008.

However, the area also has recorded some improvements in safety numbers. Vehicular fatalities and pedestrian injuries continue to see a decrease. Over 2008, vehicular fatalities have seen a decrease of 8.5 percent; while pedestrian injuries saw a 6 percent decrease. Pedestrian fatalities also seen to have leveled off, the area has remained in the low hundred range for over five years. (Chapter 3)

Due to reporting delays by the National Transit Database, staff was not able to report transit data from the transit authorizes in the region. For this reason, the Transit Statistic chapter contains FY2012 service information. Staff will release this chapter once information has been received from the National Transit Database.

## About Us

The Central Florida Metropolitan Planning Organization (MPO) Alliance is a coalition of transportation and government organizations committed to addressing transportation challenges on a regional basis. The group is made up of representatives from the nine-county Central Florida region.

The Alliance has a policy board of eighteen members, three from each of the six member organizations. Representatives from the Florida Department of Transportation participate as well. The group meets quarterly and operates on the basis of consensus. Staff support is provided by MetroPlan Orlando. The Central Florida MPO Alliance has established goals and is seeking to maximize all opportunities presented by a regional transportation forum.

### *MPO/TPO Staff Contact Information*

#### **Lake-Sumter MPO**

*(Lake and Sumter Counties)*

Mr. TJ Fish, Executive Director

1616 South 14<sup>th</sup> Street

Leesburg, Florida 34748

(352) 315-0170

[www.lakesumtermpo.com](http://www.lakesumtermpo.com)

#### **Polk TPO**

*(Polk County)*

Mr. Thomas Deardorff, Director

P.O. Box 9005; Drawer TS05

Bartow, Florida 33831

(863) 534-6486

[www.polktpo.com](http://www.polktpo.com)

#### **MetroPlan Orlando**

*(Orange, Osceola, and Seminole Counties)*

Mr. Harold Barley, Executive Director

315 East Robinson Street, Suite 355

Orlando, Florida 32801

(407) 481-5672

[www.metroplanorlando.com](http://www.metroplanorlando.com)

#### **Space Coast TPO**

*(Brevard County)*

Mr. Bob Kamm, Executive Director

2725 Judge Fran Jamieson Way, Bldg. B, MS 82

Viera, Florida 32940

(321) 690-6890

[www.spacecoasttpo.com](http://www.spacecoasttpo.com)

#### **Ocala/Marion TPO**

*(City of Ocala and Marion County)*

Mr. Greg Slay, Executive Director

P.O. Box 1270

Ocala, Florida 34478

(352) 629-8297

[www.ocalamariontpo.org](http://www.ocalamariontpo.org)

#### **River to Sea TPO**

*(Volusia County and the Cities of Flagler Beach and Beverly Beach within Flagler County)*

Lois Bollenback, Executive Director

2570 W. International Speedway Blvd., Ste. 100

Daytona Beach, Florida 32114

(386) 226-0422

[www.volusiatpo.org](http://www.volusiatpo.org)

## Regional Profile

The Central Florida MPO Alliance Area, which consists of Brevard, Lake, Marion, Orange, Osceola, Polk, Seminole, Sumter, and Volusia Counties, has continuously grown throughout the years. Historically, the area's economy has largely been centered on the health care and social services, retail trade, and accommodations and food services sectors. The medical and high tech industries have had a strong presence in the area with employers such as Florida Hospital, Adventist Health, Orlando Health, Health First, Halifax Health, Harris Corporation, United Space Alliance, and Lockheed Martin. Other major employers include Wal-Mart and Publix Supermarkets as well as Walt Disney, Universal, and Busch Entertainment.

### Population

The mega-region saw its highest population growth between 2000 and 2007 with an average 3 percent growth per year. The economic recession slowed down growth and the area is now experiencing a 1 percent population growth every year.

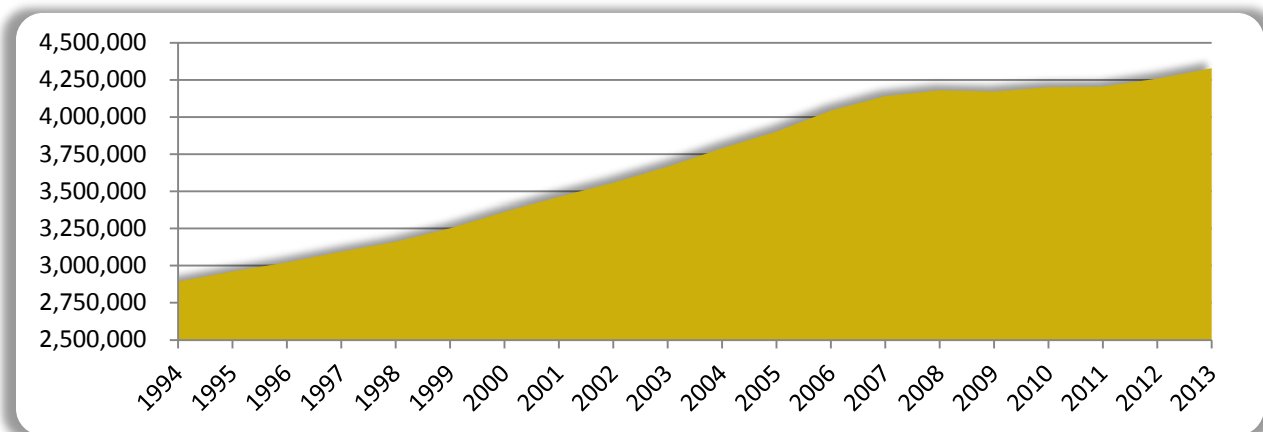
This table shows population figures for the counties within the CFMPOA region from 2009 through 2013.

Population	2009	2010	2011	2012	2013
Brevard County	555,657	543,376	543,700	545,625	548,424
Lake County	291,993	297,052	297,336	299,677	303,317
Marion County	330,440	331,298	327,221	322,989	335,008
Orange County	1,108,882	1,145,956	1,154,852	1,175,941	1,202,978
Osceola County	272,788	268,685	273,452	280,866	288,361
Polk County	584,343	602,095	601,249	606,888	613,950
Seminole County	423,759	422,718	424,422	428,104	431,074
Sumter County	95,326	93,420	87,604	100,198	105,104
Volusia County	507,105	494,593	493,593	497,145	498,978
<b>CFMPOA Region</b>	<b>4,170,293</b>	<b>4,199,193</b>	<b>4,203,429</b>	<b>4,257,433</b>	<b>4,327,194</b>

Source: University of Florida, Bureau for Economic and Business Research (BEBR)

### Historic Population Overview for the CFMPOA Region

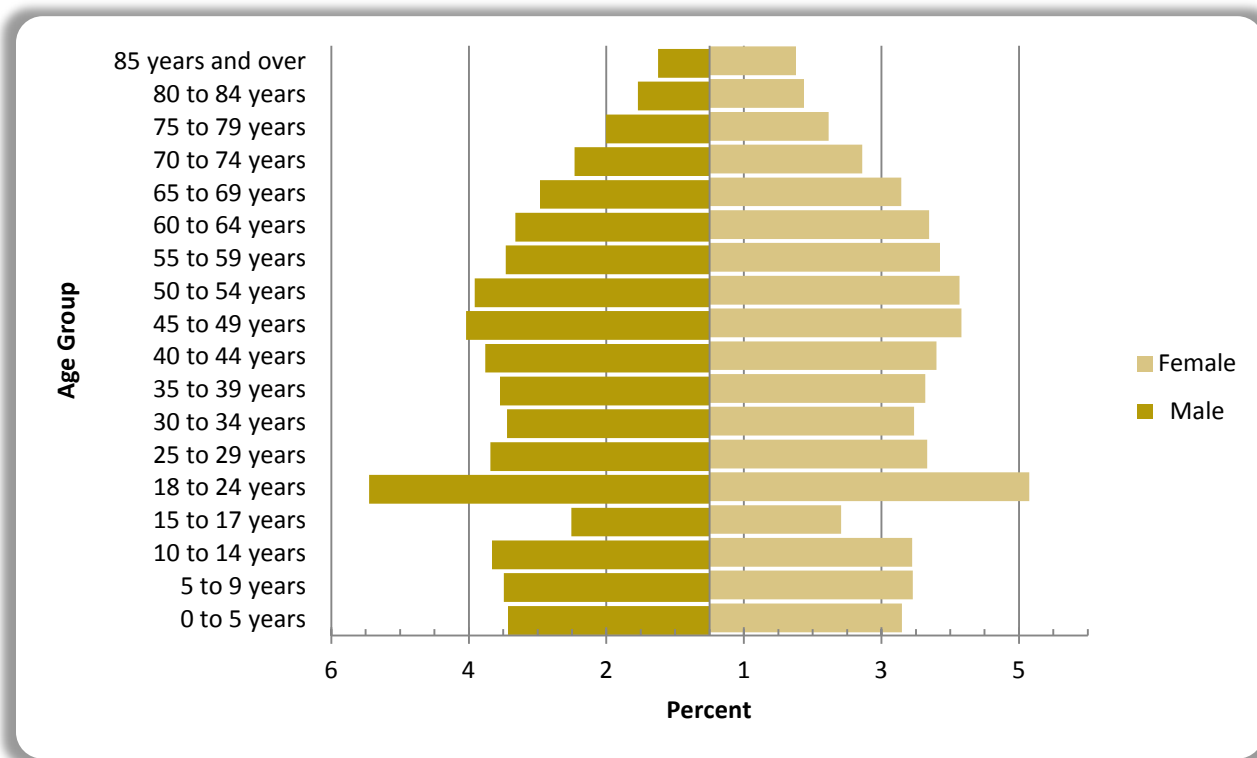
This graph illustrates the 20-year population trend total for Brevard, Lake, Marion, Orange, Osceola, Polk, Seminole, Sumter, and Volusia Counties - the CFMPOA region.



Source: University of Florida, Bureau for Economic and Business Research (BEBR)

### CFMPO Area Population by Age Group

This pyramid shows the male-female breakdown for the CFLMPO Area population. For both genders, the population in our area is largely young and middle-aged adults. The 18 to 24 age group is the largest, which could be attributed to an abundance of higher-education campuses in our area and the large number of jobs in the arts, entertainment, and tourism fields.



Source: U.S. Census Bureau - American Community Survey, General Population and Housing Characteristic: 2012

### Employment & Unemployment Levels

Employment rates affect congestion on our roadways. In theory, the higher the employment rate, the more vehicles on the road. This increase may cause congestion and longer travel times. The following tables show the number of employed and unemployed persons living in the CFMPOA area from 2009 through 2013. All counties saw an increase in employment levels in 2013. The CFMPOA region gre

Persons Employed	2009	2010	2011	2012	2013
Brevard County	240,547	237,219	233,232	242,667	243,123
Lake County	121,540	121,121	122,882	116,861	119,603
Marion County	118,779	116,334	116,341	120,268	121,342
Orange County	537,363	535,509	543,294	572,602	602,385
Osceola County	124,019	123,591	125,388	124,398	133,438
Polk County	243,913	240,903	241,068	247,290	251,172
Seminole County	213,889	213,151	216,249	221,062	225,931
Sumter County	29,156	30,770	31,657	34,743	36,137
Volusia County	226,649	223,067	225,993	229,044	233,371
<b>CFMPOA Region</b>	<b>1,855,855</b>	<b>1,841,665</b>	<b>1,856,104</b>	<b>1,908,935</b>	<b>1,966,502</b>

Source: Florida Research and Economic Database, Local Area Employment Statistics (LAUS)

## Unemployment

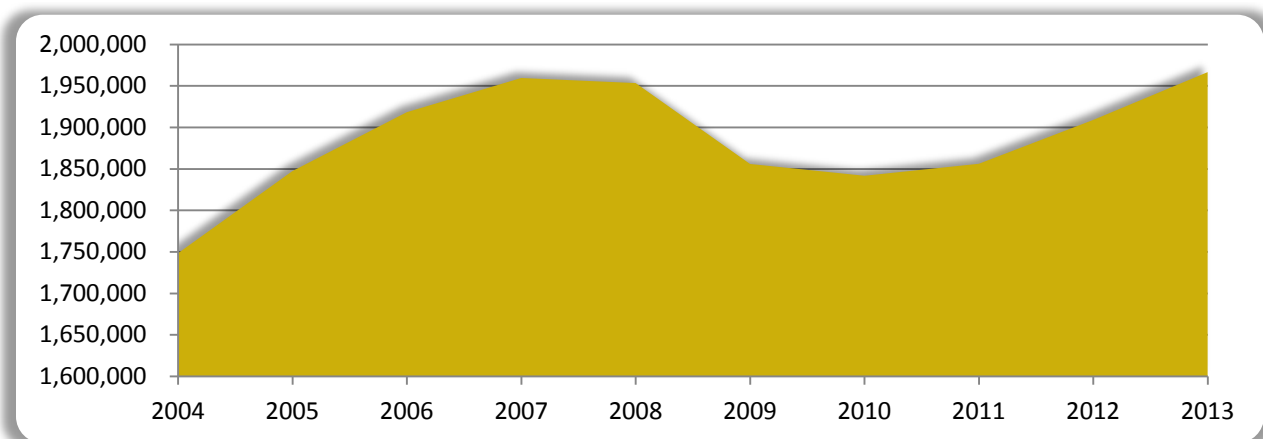
As the impacts of the economic recession begin to wear off, the CFMPOA region saw large decreases in unemployment levels. The average decrease was around 17 percent, with Orange and Osceola counties decreasing at 20 percent. This table shows the unemployment rate in the CFMPOA area from 2009 through 2013:

Unemployment Rate	2009	2010	2011	2012	2013
Brevard County	10.2	11.1	11.1	9.3	7.9
Lake County	10.9	12.3	11.2	9.1	7.5
Marion County	12.5	13.4	12.3	10.0	8.3
Orange County	10.2	11.1	10.3	8.5	6.8
Osceola County	11.0	12.4	11.6	9.4	7.5
Polk County	11.1	12.2	11.6	9.7	8.2
Seminole County	9.7	10.5	9.7	7.9	6.4
Sumter County	9.0	9.8	8.5	7.0	5.9
Volusia County	10.6	11.5	10.8	8.9	7.3
<b>CFMPOA Region</b>	<b>10.6</b>	<b>11.6</b>	<b>10.8</b>	<b>8.9</b>	<b>7.3</b>

Source: Florida Research and Economic Database, *Local Area Employment Statistics (LAUS)*

## Historic Employment Overview for the CFMPOA Region

This graph illustrates the 10-year employment trend total for the CFMPOA region.



## Hotel / Motel Rooms

Both leisure and business/convention travel are important components of the region's economy. As a result, there are a large number and variety of hotels and motels. This table shows the number of hotel/motel rooms in the CFMPOA region from 2008/09 through 2012/13:

Room Capacity	2008/09	2009/10	2010/11	2011/12	2012/13
Brevard County	9,399	9,571	9,417	9,181	9,312
Lake County	2,996	3,054	2,989	2,989	2,995
Marion County	4,493	4,471	4,187	3,954	4,055
Orange County	78,472	83,021	84,046	86,007	86,571
Osceola County	26,159	26,132	25,330	24,921	25,115
Polk County	6,976	7,165	6,910	6,803	6,931
Seminole County	4,697	5,013	5,305	5,159	4,989
Sumter County	770	770	770	770	770
Volusia County	12,600	12,165	11,802	11,911	11,755
<b>CFMPOA Region</b>	<b>146,562</b>	<b>151,362</b>	<b>150,756</b>	<b>151,695</b>	<b>152,493</b>

Source: FL Department of Business and Professional Regulation, *Count of Active Licenses and Seats/Units by Type and FL County*



## Licensed Drivers

The number of licensed drivers in the area is another indicator of traffic congestion levels. This table shows how many licensed drivers were in the CFMPOA region from 2009 through 2013:

Licensed Drivers	2009	2010	2011	2012	2013
Brevard County	467,118	466,217	461,921	456,251	455,380
Lake County	247,957	249,179	249,085	247,764	249,442
Marion County	280,623	280,467	278,406	274,512	273,572
Orange County	875,462	876,077	880,791	883,215	893,288
Osceola County	221,244	223,721	225,934	228,454	233,733
Polk County	454,664	453,207	450,165	444,340	444,664
Seminole County	346,343	344,358	343,230	341,598	341,747
Sumter County	70,191	72,796	75,215	77,776	81,456
Volusia County	419,292	416,272	410,653	403,957	402,340
<b>CFMPOA Region</b>	<b>3,382,894</b>	<b>3,382,294</b>	<b>3,375,400</b>	<b>3,357,867</b>	<b>3,375,622</b>

Source: Florida Department of Highway Safety and Motor Vehicle, *Vehicle and Vessel Reports and Statistics*

## Registered Vehicles

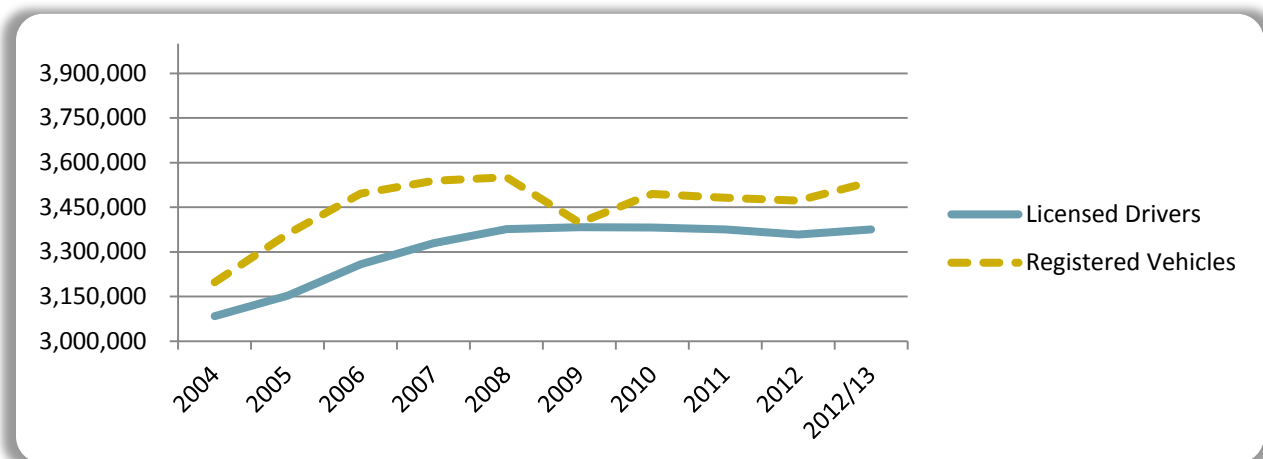
Another indicator that can be used to measure traffic congestion is the change in the number of vehicles on the road. The following table illustrates the number of registered motor vehicles in the CFMPOA region from FY 2008/09 through 2012/13:

Registered Vehicles	2008/09	2009/10	2010/11	2011/12	2012/13
Brevard County	479,526	473,167	470,263	463,399	466,949
Lake County	254,250	253,763	252,449	248,331	251,548
Marion County	283,223	274,692	272,769	267,009	270,027
Orange County	833,343	935,280	934,894	951,239	1,064,468
Osceola County	203,230	197,960	201,017	208,232	211,717
Polk County	466,652	452,586	449,073	440,202	446,088
Seminole County	372,063	417,023	414,074	412,258	335,248
Sumter County	63,913	68,326	70,459	70,903	73,728
Volusia County	441,457	422,345	417,244	411,147	415,822
<b>CFMPOA Region</b>	<b>3,397,657</b>	<b>3,495,142</b>	<b>3,482,242</b>	<b>3,472,720</b>	<b>3,535,595</b>

Source: Florida Department of Highway Safety and Motor Vehicle, *Vehicle and Vessel Reports and Statistics*

## Historic Comparison: Licensed Drivers and Registered Vehicles for the CFMPOA Region

This graph illustrates the 10-year comparison of licensed drivers and registered vehicles for Brevard, Lake, Marion, Orange, Osceola, Polk, Seminole, Sumter, and Volusia Counties - the CFMPOA region.



Source: Florida Department of Highway Safety and Motor Vehicle, *Vehicle and Vessel Reports and Statistics*

## Highway Statistics

Due to the region's steady population growth and development patterns in the past few decades, the private (and in many cases the single-occupant) automobile is the predominant mode of transportation. Several factors -- including time-of-day, travel demand, and multi-year construction delays -- have led to increased congestion throughout the CFMPOA region.

### Local Road Mileage (Paved Centerline Miles)



Centerline miles represent the total length of a given road from its starting point to its end point. The number and size of the lanes on that road are disregarded when calculating its centerline mileage.

This table shows the change in the number of miles of paved local roads in the CFMPOA region over the 2008-2012 timeframe. The numbers in the table reflect the centerline miles of paved roads, information that is collected annually from local governments by FDOT.

<i>Local Road Mileage</i>	<i>2008</i>	<i>2009</i>	<i>2010</i>	<i>2011</i>	<i>2012</i>
Brevard County	2,790.0	2,794.0	2,798.4	2,799.6	2,885.9
Lake County	1,926.6	1,942.7	1,958.7	1,971.7	1,971.6
Marion County	2,910.7	2,909.3	2,942.3	2,999.0	3,025.2
Orange County	4,100.4	4,118.9	4,137.5	3,965.8	3,982.7
Osceola County	1,157.1	1,164.7	1,172.6	1,173.0	1,174.1
Polk County	3,517.1	3,549.0	3,564.7	3,571.6	3,607.8
Seminole County	1,473.0	1,477.6	1,481.8	1,479.7	1,476.8
Sumter County	684.5	725.4	743.7	811.1	808.3
Volusia County	2,861.7	2,862.0	2,836.2	2,854.7	2,854.0
<b>CFMPOA Region</b>	<b>21,421.1</b>	<b>21,543.6</b>	<b>21,635.9</b>	<b>21,626.2</b>	<b>21,786.4</b>

Source: Florida Department of Transportation, *Florida Highway Mileage Reports - City and County Roads*

### State Road Mileage (Lane Miles)

Another indicator of the change in the amount of travel for the MPOs and TPOs in the CFMPOA region is the corresponding change in roadway lane mileage. Lane miles are calculated by multiplying the centerline mileage of a road by the number of lanes it has. Lane mileage provides a total amount of mileage covered by lanes belonging to a specific road. The lane miles of state roads in Brevard, Lake, Marion, Orange, Osceola, Polk, Seminole, Sumter, and Volusia Counties -- from 2007 through 2011-- are shown in the tables below. These have been divided into interstate facilities (such as I-4, I-75, and I-95); toll roads (such as SR 417, SR 528, and Florida's Turnpike); and other state roads (such as SR 50, SR 46, and SR 436).

<i>MetroPlan Orlando</i>	<i>2009</i>	<i>2010</i>	<i>2011</i>	<i>2012</i>	<i>2013</i>
Interstate	316.3	316.3	311.8	311.6	311.6
Toll Roads	1,014.9	1,022.7	1,071.5	1,090.9	1,113.6
Other State Roads	1,738.0	1,746.4	1,761.2	1,764.6	1,768.4
<b>Total</b>	<b>3,069.2</b>	<b>3,085.4</b>	<b>3,144.5</b>	<b>3,167.1</b>	<b>3,193.6</b>

<i>Lake-Sumter MPO</i>	<i>2009</i>	<i>2010</i>	<i>2011</i>	<i>2012</i>	<i>2013</i>
Interstate	130.4	130.4	130.4	130.4	130.4
Toll Roads	138.2	138.2	138.2	138.6	138.6
Other State Roads	875.4	875.4	879.8	903.0	903.0
<b>Total</b>	<b>1,144.0</b>	<b>1,144.0</b>	<b>1,148.4</b>	<b>1,172.0</b>	<b>1,172.0</b>

Space Coast TPO	2009	2010	2011	2012	2013
Interstate	311.7	311.7	319.8	355.6	355.6
Toll Roads	36.6	35.9	35.9	53.0	53.0
Other State Roads	914.6	920.3	919.9	903.0	902.7
<b>Total</b>	<b>1,262.9</b>	<b>1,267.9</b>	<b>1,275.6</b>	<b>1,311.6</b>	<b>1,311.3</b>

Volusia TPO	2009	2010	2011	2012	2013
Interstate	359.4	359.4	359.4	359.6	359.0
Toll Roads	-	-	-	-	-
Other State Roads	961.8	965.6	965.7	966.0	966.0
<b>Total</b>	<b>1,321.2</b>	<b>1,325.0</b>	<b>1,325.1</b>	<b>1,325.6</b>	<b>1,325.0</b>

Note: Volusia TPO lane mileage does not include roadway portions in Flagler Beach or Beverly Beach

Polk TPO	2009	2010	2011	2012	2013
Interstate	195.4	195.4	195.4	195.4	194.4
Toll Roads	89.2	89.2	89.2	93.9	92.7
Other State Roads	1,334.2	1,336.7	1,336.7	1,347.7	1,357.1
<b>Total</b>	<b>1,618.8</b>	<b>1,621.3</b>	<b>1,621.3</b>	<b>1,637.0</b>	<b>1,644.2</b>

Ocala / Marion Co. TPO	2009	2010	2011	2012	2013
Interstate	229.7	229.7	229.7	229.7	229.7
Toll Roads	-	-	-	-	-
Other State Roads	684.9	684.1	686.8	697.4	697.4
<b>Total</b>	<b>914.6</b>	<b>913.8</b>	<b>916.5</b>	<b>927.1</b>	<b>927.1</b>

CFMPOA Region Total	2009	2010	2011	2012	2013
Interstate	1,542.9	1,542.9	1,551.0	1,581.7	1,580.7
Toll Roads	1,278.9	1,286.0	1,313.4	1,376.1	1,397.9
Other State Roads	6,508.9	6,528.5	6,541.8	6,581.7	6,594.6
<b>Total</b>	<b>9,330.7</b>	<b>9,357.4</b>	<b>9,406.2</b>	<b>9,539.5</b>	<b>9,573.2</b>

Source: Florida Department of Transportation, Mileage and Travel (DVMT) Reports - State Highway System

### Vehicle Miles Traveled

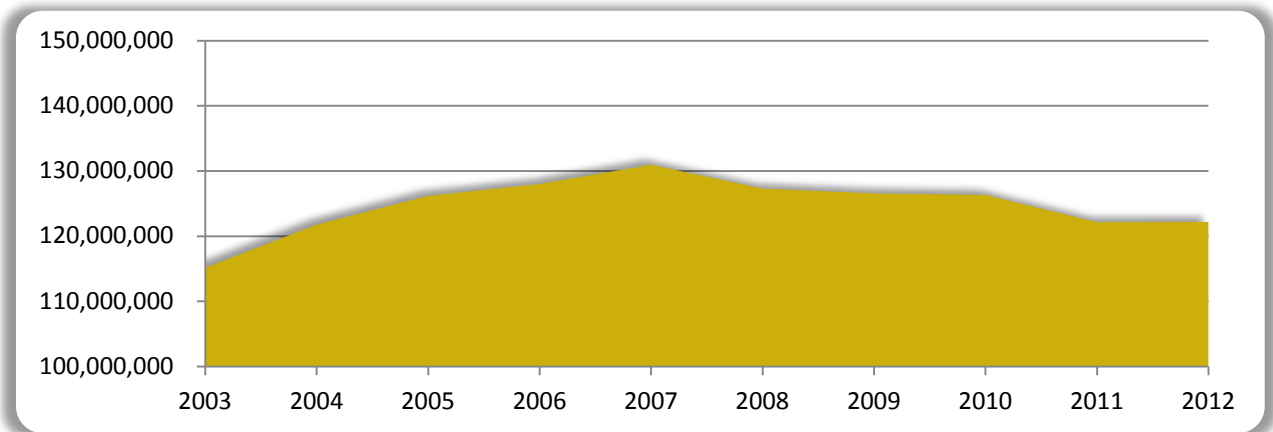
The number of vehicle miles traveled (VMT) on the highway network is an indicator that measures the growth in both the number of vehicles and the distances driven in the CFMPOA region. FDOT annually estimates the VMT for all counties in the state by multiplying the lengths of the state and local roads in the counties by the average daily trips on those roads. This table and graph illustrate the average daily VMTs in the CFMPOA region from 2008 through 2012:

Vehicle Miles Traveled	2008	2009	2010	2011	2012
Brevard County	17,893,256	17,355,029	17,125,596	16,477,274	16,267,601
Lake County	8,124,673	8,024,494	8,054,672	7,906,575	7,870,747
Marion County	11,397,654	11,279,407	11,067,331	10,926,028	10,835,897
Orange County	35,436,426	35,586,328	35,657,527	33,325,315	34,099,958
Osceola County	8,836,800	8,730,733	8,639,272	8,650,963	8,807,344
Polk County	16,692,962	16,410,596	16,442,305	16,409,039	15,923,000
Seminole County	9,866,475	10,262,469	10,249,225	9,922,699	9,972,497
Sumter County	3,427,152	3,367,650	3,629,402	3,714,603	3,643,756
Volusia County	15,586,786	15,501,243	15,419,863	14,776,444	14,723,818
<b>CFMPOA Region</b>	<b>127,262,184</b>	<b>126,517,949</b>	<b>126,285,193</b>	<b>122,108,940</b>	<b>122,144,618</b>

Source: Florida Department of Transportation, Centerline Miles and Daily Vehicle Miles Traveled Report

### 10-Year Historic Trend - Vehicle Miles Traveled

This graph illustrates the 10-year VMT trend total for Brevard, Lake, Marion, Orange, Osceola, Polk, Seminole, Sumter, and Volusia Counties - the CFMPOA region.



### Gasoline Consumption

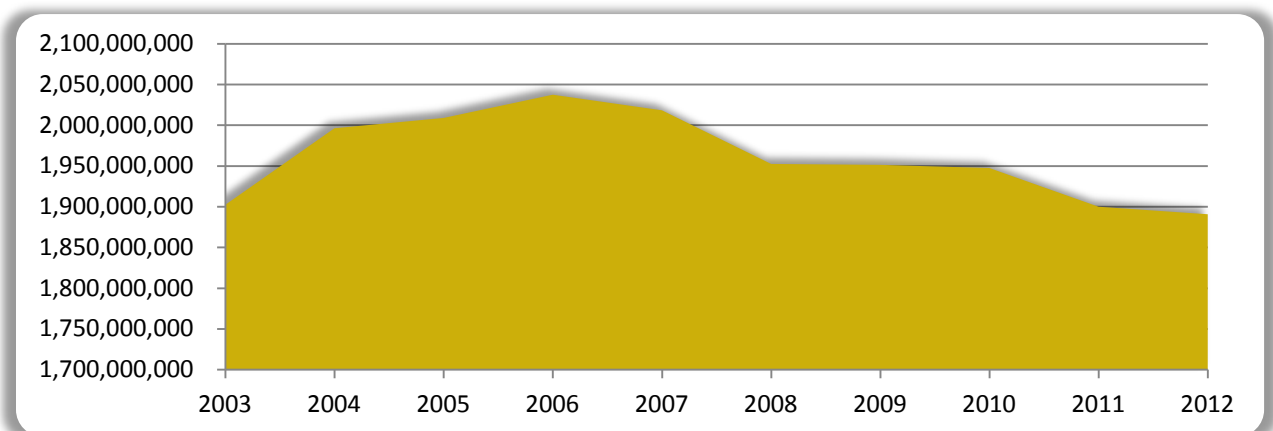
Consumption of gasoline over a period of years also indicates changes in the number of vehicles and amount of travel in the CFMPOA area. This chart illustrates the number of gallons of gasoline sold in the region from 2008 through 2012.

Gasoline Consumption	2008	2009	2010	2011	2012
Brevard County	239,522	245,859	242,942	237,925	234,409
Lake County	126,634	129,344	134,595	130,471	126,210
Marion County	178,584	178,849	173,089	161,291	156,728
Orange County	576,320	563,027	563,873	552,913	559,346
Osceola County	155,874	158,769	158,721	155,595	160,298
Polk County	233,147	231,656	231,183	224,299	217,381
Seminole County	196,184	190,695	192,945	185,810	182,605
Sumter County	43,304	44,568	44,229	45,586	49,931
Volusia County	202,881	208,551	205,838	206,048	203,803
<b>CFMPOA Region</b>	<b>1,952,450</b>	<b>1,951,318</b>	<b>1,947,415</b>	<b>1,899,938</b>	<b>1,890,711</b>

Source: Florida Department of Agriculture and Consumer Services, *Florida Motor Gasoline & Diesel Fuel Reports*

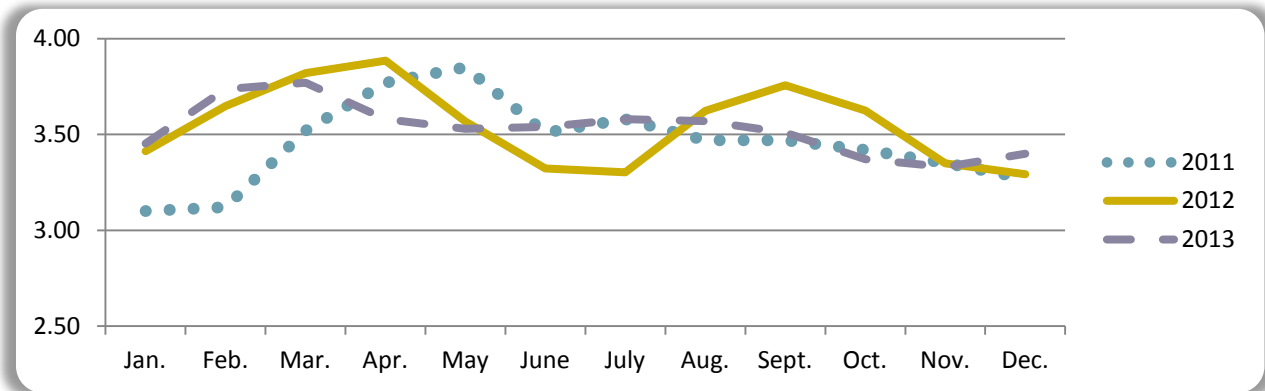
### 10-Year Historic Trend - Gasoline Consumption

This graph illustrates the 10-year gasoline consumption trend total for Brevard, Lake, Marion, Orange, Osceola, Polk, Seminole, Sumter, and Volusia counties - the CFMPOA region.



### Average Monthly Gasoline Price per Gallon

One factor that influences the amount of gasoline consumed is the price per gallon. The average monthly price per gallon for regular gasoline in the CFMPOA region from 2011 through 2013 is shown in the following chart.



Source: U.S. Energy Information Administration, *Florida Regular Retail Prices Report*

### Diesel Fuel Consumption

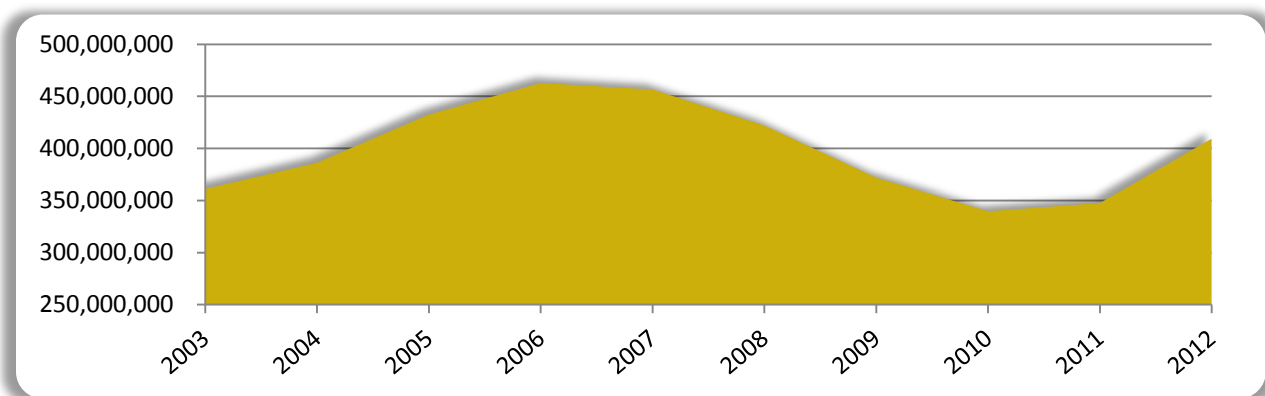
Consumption of diesel fuel over a period of years also indicates change in the number of vehicles, particularly commercial trucks, in the CFMPOA area. This chart shows the number of gallons of diesel fuel sold in the region from FY 2007/08 through FY 2011/12.

Diesel Consumption	2008	2009	2010	2011	2012
Brevard County	37,894	34,080	32,209	35,511	103,813
Lake County	20,520	16,677	15,744	15,329	14,830
Marion County	50,728	45,628	41,725	41,366	40,426
Orange County	113,229	101,680	103,432	100,818	98,641
Osceola County	22,819	18,386	13,632	13,184	12,883
Polk County	89,288	78,554	74,078	72,990	70,305
Seminole County	23,704	19,668	18,072	14,448	16,595
Sumter County	32,978	30,392	29,408	29,504	28,428
Volusia County	30,734	26,829	24,923	24,281	23,274
<b>CFMPOA Region</b>	<b>421,894</b>	<b>371,894</b>	<b>353,223</b>	<b>347,431</b>	<b>409,195</b>

Source: Florida Department of Agriculture and Consumer Services, *Florida Motor Gasoline & Diesel Fuel Reports*

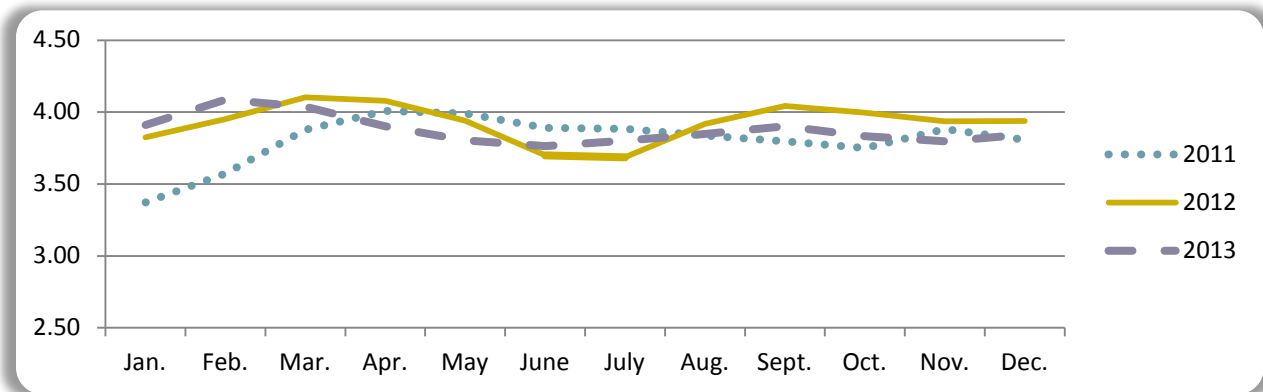
### 10-Year Historic Trend - Diesel Consumption

This graph illustrates the 10-year diesel consumption trend total for Brevard, Lake, Marion, Orange, Osceola, Polk, Seminole, Sumter, and Volusia counties - the CFMPOA region.



### Average Monthly Diesel Price per Gallon

One factor that influences the amount of diesel fuel consumed is the price per gallon. The average monthly price per gallon for diesel in the CFMPOA region from 2011 through 2013 is shown in the following chart.



Source: U.S. Energy Information Administration, *Lower Atlantic Diesel Retail Prices Report*

### Traffic Counts - Major Roadways

One of the main methods for measuring activity on an area's highway system is the collection of traffic counts on major roadways. More than 400 traffic counts for various locations in Brevard, Lake, Marion, Orange, Osceola, Polk, Seminole, Sumter, and Volusia counties are obtained each year by the Florida Department of Transportation.

The tables shown on pages 8-12 contain FDOT daily (24-hour) traffic counts averaged annually on major roadways in the region from 2006 through 2012:

<i>Interstate 95</i>	<i>2008</i>	<i>2009</i>	<i>2010</i>	<i>2011</i>	<i>2012</i>
S of SR 514	33,400	35,600	35,500	34,330	35,277
S of CR 516	77,500	49,500	48,500	34,000	24,000
N of CR 516	80,000	78,000	78,000	55,000	68,000
N of SR 500	81,500	79,500	78,000	55,000	39,000
N of SR 518	83,000	69,500	68,500	37,500	69,500
S of Fiske Blvd.	77,000	70,000	69,000	55,000	57,500
S of SR 520	71,500	74,000	40,500	45,500	64,312
S of SR 407	41,000	38,500	39,000	53,500	53,500
N of Dairy Rd.	33,000	34,500	31,000	31,500	29,500
N of CR 5A	24,500	26,000	24,500	30,500	30,000
S of SR 44	34,000	32,000	32,000	31,000	31,000
N of SR 44	36,400	37,400	38,000	36,599	36,921
S of I-4	57,500	52,500	51,000	44,500	42,500
S of LPGA Blvd.	68,000	70,000	70,500	74,500	71,500
N of LPGA Blvd.	79,000	79,500	68,000	76,000	69,500
S of SR 5	55,000	68,500	69,000	62,500	66,500
N of SR 5	53,000	66,000	67,000	60,500	64,500
<b>Total Average</b>	<b>985,300</b>	<b>961,000</b>	<b>908,000</b>	<b>817,429</b>	<b>853,010</b>

<i>Interstate 4</i>	<i>2008</i>	<i>2009</i>	<i>2010</i>	<i>2011</i>	<i>2012</i>
E of Hillsborough Co. Line	102,500	104,000	108,500	104,500	110,500
SW of W. Memorial Blvd.	90,000	84,500	87,000	85,500	84,000
NE of SR 539/Kathleen Rd.	76,500	76,500	79,000	81,000	84,000
NE of US 98	75,500	72,500	74,000	77,000	77,500
NE of Old Combee Rd.	62,500	64,500	65,500	70,000	74,000
E of SR 33	67,500	64,500	64,500	68,000	68,000
E of SR 559	65,000	65,500	71,500	72,500	76,500
SW of US 27	72,000	68,500	75,000	75,500	77,500
NE of US 27	100,500	95,500	99,000	95,500	31,200
SW of SR 417	78,000	78,500	85,500	61,000	75,500
at Florida's Turnpike	146,500	152,500	157,000	152,000	161,500
N of Kaley Ave.	175,000	142,500	136,500	131,500	138,000
S of SR 50	200,000	160,000	158,000	150,000	148,000
N of Princeton St.	182,500	159,500	164,000	168,000	196,000
N of Lee Rd.	205,000	160,000	170,500	124,000	149,000
S of Seminole Co. Line	149,000	158,000	149,500	158,500	149,000
N of SR 436	139,500	142,000	146,500	135,500	14,000
N of SR 434	131,600	132,500	134,000	132,557	132,663
S of CR 46A	126,500	125,000	126,500	125,000	125,000
N of SR 46	111,000	108,000	115,000	109,500	103,000
E of Enterprise Rd.	92,600	94,700	95,500	93,629	93,854
SW of SR 472	86,000	53,500	86,500	79,500	88,000
NE of SR 472	58,000	75,000	76,000	70,500	77,500
SW of SR 44	58,000	61,500	65,000	62,000	55,500
NE of SR 44	56,000	54,500	56,000	54,000	55,000
W of I-95	47,500	45,500	43,000	43,000	40,000
<b>Total Average</b>	<b>2,754,700</b>	<b>2,599,200</b>	<b>2,689,000</b>	<b>2,579,686</b>	<b>2,484,717</b>

<i>SR 528</i>	<i>2008</i>	<i>2009</i>	<i>2010</i>	<i>2011</i>	<i>2012</i>
E of I-4	78,300	74,500	75,300	77,800	80,600
W of John Young Pkwy.	81,100	77,000	77,400	80,200	82,300
E of US 441	69,600	63,900	64,400	68,500	70,000
E of McCoy Rd.	87,100	81,100	81,200	85,800	87,000
W of SR 436	91,000	76,000	84,500	69,500	80,840
W of Goldenrod Rd.	66,000	59,600	63,000	34,500	69,920
E of Narcoossee Rd.	60,000	53,500	44,000	55,910	54,280
E of SR 417	42,000	40,500	40,000	34,000	48,430
W of SR 520	37,500	39,300	39,200	38,759	38,427
E of St. Johns River	30,500	26,500	27,500	26,500	28,500
E of I-95	24,500	20,900	22,700	20,200	21,100
W of US 1	36,000	34,000	37,500	39,500	35,000
<b>Total Average</b>	<b>703,600</b>	<b>646,800</b>	<b>656,700</b>	<b>631,169</b>	<b>696,397</b>

<i>US 192</i>	<i>2008</i>	<i>2009</i>	<i>2010</i>	<i>2011</i>	<i>2012</i>
E of US 27	50,000	35,000	37,000	39,000	40,000
E of CR 545	45,500	42,500	43,000	41,000	48,500
W of Orange County Line	51,500	43,000	48,000	58,000	58,000
W of I-4	64,500	57,500	54,000	73,000	70,500
SE of SR 535	58,000	50,500	54,000	50,000	50,000
W of Hoagland Blvd.	57,500	57,700	58,500	58,590	59,133
W of John Young Pkwy.	41,500	45,000	45,000	42,500	44,000
E of US 441	45,500	48,000	45,500	44,000	46,000
SE of Boggy Creek Rd.	39,000	42,500	38,500	40,500	35,000
NW of Neptune Rd.	42,000	44,000	42,500	40,500	40,500
E of Vermont Ave.	36,500	39,000	38,500	32,500	37,000
W of CR 534	28,000	28,500	28,000	21,500	20,400
E of CR 532	19,700	17,600	22,000	15,200	17,200
W of I-95	5,600	6,200	6,100	6,300	6,200
E of I-95	33,500	28,500	27,500	27,500	27,500
W of Babcock St.	40,500	37,000	33,000	34,500	33,000
W of US 1	18,200	16,700	17,100	16,900	15,700
<b>Total Average</b>	<b>677,000</b>	<b>639,200</b>	<b>638,200</b>	<b>641,490</b>	<b>648,633</b>

<i>SR 46</i>	<i>2008</i>	<i>2009</i>	<i>2010</i>	<i>2011</i>	<i>2012</i>
W of Round Lake Rd.	10,500	10,500	10,900	10,000	10,400
E of CR 437 South	13,800	13,600	13,600	12,900	11,700
E of CR 437 North	14,900	15,000	14,300	14,100	14,200
E of Lake Co. Line	21,000	19,700	19,600	18,700	20,200
W of I-4	31,000	30,500	30,500	14,800	14,800
E of I-4	37,500	43,000	32,000	21,500	21,500
W of Airport Blvd.	29,000	27,000	28,500	20,000	23,000
W of US 17/92	19,200	17,000	16,600	17,100	N/C
E of US 17/92	19,500	15,200	16,100	21,900	17,200
E of CR-425	15,400	15,000	14,200	14,000	14,600
W of St. Johns River	10,400	9,800	10,500	10,196	10,275
E of CR 426	6,200	5,900	5,900	6,100	8,500
2.5 mi. W of I-95	5,500	8,500	5,200	5,600	6,000
E of I-95	9,400	8,300	7,700	7800	9100
<b>Total Average</b>	<b>243,300</b>	<b>239,000</b>	<b>225,600</b>	<b>194,696</b>	<b>181,475</b>



<i>SR 50</i>	<i>2008</i>	<i>2009</i>	<i>2010</i>	<i>2011</i>	<i>2012</i>
at CR 478A	7,700	5,700	53,000	5,300	5,300
W of SR 471	9,200	6,200	6,400	5,800	5,300
W of Lake Co. Line	9,200	7,700	7,300	7,500	6,900
W of CR 565	13,100	12,000	11,200	10,600	9,900
E of CR 565	23,500	17,800	18,600	16,100	16,800
E of SR 19	24,000	22,500	21,500	8,100	10,500
W of CR 565A	22,000	23,000	23,000	22,500	23,000
W of CR 561	23,000	22,500	23,000	22,000	22,000
E of CR 561	26,500	25,500	25,500	24,000	26,000
W of US 27	34,500	31,000	30,000	30,000	29,000
W of Hancock Rd.	39,000	36,000	35,000	37,000	44,500
E of Lake Co. Line	47,500	47,000	46,000	44,000	41,000
E of CR 545	33,300	32,800	31,500	29,500	30,734
E of Old Winter Garden Rd.	39,500	38,500	34,000	32,000	32,500
E of Powers Dr.	39,500	37,000	36,000	29,500	37,000
E of John Young Pkwy.	34,500	35,000	32,000	31,000	36,000
E of Edgewater Dr.	39,000	32,500	36,500	32,500	33,500
W of US 17/92	43,000	42,000	38,000	42,500	44,000
E of Bennet t Rd,	53,500	52,500	21,500	49,500	52,000
E of SR 436	40,000	39,000	24,500	44,500	46,000
E of Goldenrod Rd.	45,000	44,000	37,000	40,500	45,000
E of Dean Rd.	45,500	42,500	41,000	38,000	43,000
E of Alafaya Tr.	46,500	44,000	45,000	46,000	41,500
W of SR 520	25,500	26,200	25,600	25,231	25,087
W of I-95	11,500	11,500	10,900	9,900	10,700
E of I-95	21,500	21,000	22,900	21,000	21,000
W of US 1	15,700	16,100	12,800	12,300	12,100
<b>Total Average</b>	<b>812,700</b>	<b>771,500</b>	<b>749,700</b>	<b>716,831</b>	<b>750,321</b>

<i>Interstate 75</i>	<i>2008</i>	<i>2009</i>	<i>2010</i>	<i>2011</i>	<i>2012</i>
S of CR 476B	40,000	35,500	37,500	38,500	34,000
S of SR 48	38,000	36,500	34,500	37,000	37,701
S of Florida's Turnpike	40,400	41,300	41,000	41,424	39,544
S of SR 44	71,500	58,500	61,500	59,000	58,500
N of SR 44	68,000	61,500	65,000	67,500	62,500
N of Williams Rd.	74,600	76,100	77,500	75,099	74,915
S of SR 40	69,000	67,000	71,000	65,500	60,000
S of US 27	64,000	62,000	69,000	67,500	65,000
N of US 27	58,500	56,500	55,500	65,000	64,000
N of SR 326	50,000	52,500	51,500	51,500	55,000
N of CR 318	51,000	52,000	46,500	48,500	56,000
<b>Total Average</b>	<b>625,000</b>	<b>599,400</b>	<b>610,500</b>	<b>616,523</b>	<b>607,160</b>

<i>US 441</i>	<i>2008</i>	<i>2009</i>	<i>2010</i>	<i>2011</i>	<i>2012</i>
S of CR 320	8,100	8,100	9,400	7,700	10,100
N of SR 326	24,000	23,500	23,500	24,376	20,500
S of CR 25A	24,000	25,000	24,500	18,200	22,000
N of SR 492	30,000	27,000	26,000	27,000	28,500
S of SR 40	36,500	35,500	34,500	34,000	34,500
S of CR 464A	31,500	30,500	29,500	29,500	28,000
S of SE 38th Ter.	28,500	25,500	27,500	26,000	26,500
NW of CR 484	32,000	30,000	28,500	30,000	28,500
N of SE 119th Pl.	22,500	22,500	20,500	11,800	17,900
N of CR 42	25,000	25,000	27,000	12,200	26,000
S of CR 466A	32,500	30,500	31,500	12,400	27,000
N of CR 44A	46,500	46,000	42,500	17,500	32,500
NW of SR 44	29,500	30,500	29,000	28,000	28,500
E of CR 44	32,000	34,300	33,800	33,012	32,742
E of CR 473	40,000	42,500	40,500	39,000	40,000
W of SR 19	40,000	42,000	30,000	27,500	29,500
W of CR 452	38,500	43,500	43,500	44,500	43,500
E of SR 19	34,500	37,000	40,000	37,000	37,500
SE of CR 44	26,000	25,500	27,500	27,500	25,500
N of SR 46	26,500	27,000	28,500	29,500	30,000
S of Lake Co. Line	25,500	27,000	25,000	25,500	25,000
NW of Plymouth-Sorrento Rd.	34,500	32,500	33,500	32,500	30,500
NW of SR 429	39,000	43,000	44,500	37,500	47,000
W of SR 436	50,500	49,500	46,000	27,000	11,500
N of Clarcona-Ocoee Rd.	32,500	27,500	29,500	27,000	30,500
N of SR 50	26,500	27,500	25,000	28,000	26,500
S of SR 50	21,500	27,000	21,500	20,600	22,000
S of SR526	33,000	29,500	29,000	26,500	31,000
N of Holden Ave.	60,500	58,000	57,000	57,000	58,500
N of Sand Lake Rd.	53,000	53,000	50,000	53,500	54,500
N of Beachline Expy.	75,000	70,000	71,000	61,000	58,500
S of Taft-Vineland Rd.	45,000	43,000	47,000	47,000	45,000
N of Osceola Co. Line	31,000	32,000	33,000	34,500	32,500
<b>Total Average</b>	<b>1,135,600</b>	<b>1,130,900</b>	<b>1,109,700</b>	<b>994,288</b>	<b>1,042,242</b>

<i>US 17 / 92</i>	<i>2008</i>	<i>2009</i>	<i>2010</i>	<i>2011</i>	<i>2012</i>
E of CR 555	23,000	22,000	21,900	21,500	16,300
E of Experiment Station Rd.	15,600	15,600	15,200	15,200	16,887
W of Kentucky Ave.	19,900	19,500	20,000	19,800	19,800
W of 9th St. (Haines City)	17,700	18,000	16,900	16,700	22,000
N of CR 580/Johnson Ave.	11,900	11,300	11,100	11,100	11,600
SW of CR 547	10,600	10,200	9,700	9,700	9,600
NE of CR 54	7,900	7,500	7,500	7,500	9,950
W CR-531	25,500	26,000	26,000	24,000	24,500
S of Emmett St.	52,500	54,000	56,000	53,000	54,000
N of SR 50	27,500	25,000	27,500	27,500	24,500
S of Orange Ave.	26,000	24,500	26,000	25,000	25,500
S of Lee Rd.	35,500	32,000	31,500	32,500	35,000
N of Lake Ave.	50,500	44,000	51,000	48,500	51,500
S of Maitland Blvd.	30,000	29,500	28,500	30,500	31,500
N of Orange Co. Line	52,000	49,000	50,000	47,000	52,000
N of SR 436	51,500	50,500	52,000	48,000	50,500
N of SR 434	39,500	36,500	37,000	38,000	38,000
S of CR 427	32,000	32,500	29,500	23,500	30,500
S of Lake Mary Blvd.	37,000	35,500	35,000	34,000	32,000
S of CR 46A	24,000	21,000	21,500	23,000	22,500
S of SR 46	25,000	22,500	26,000	23,500	26,500
S of Dirksen Rd.	24,000	23,000	25,000	23,500	22,500
S of Saxon Blvd.	27,500	27,500	27,500	27,500	17,500
S of Graves Ave.	30,500	29,500	30,000	29,000	26,500
S of New York Ave.	28,000	27,500	28,000	27,000	26,000
N of Golf Club Dr.	47,500	43,500	44,000	44,000	41,000
N of SR 15A/Taylor Rd.	27,500	26,500	26,500	27,500	27,000
N of Beresford Ave.	16,800	16,400	17,300	18,000	16,800
S of SR 44/New York Ave.	15,200	14,700	15,300	16,600	16,000
S of Minnesota Ave.	18,300	16,300	16,700	16,400	16,000
N of Plymouth Ave.	26,500	23,000	22,000	21,500	22,500
<b>Total Average</b>	<b>876,900</b>	<b>834,500</b>	<b>852,100</b>	<b>830,500</b>	<b>836,437</b>

<i>Florida's Turnpike</i>	<i>2008</i>	<i>2009</i>	<i>2010</i>	<i>2011</i>	<i>2012</i>
SE of I-75	34,800	33,200	33,700	35,000	34,000
at CR 468	35,900	35,900	37,200	36,072	35,500
NW of Lake Co. Line	37,300	35,700	36,400	36,000	36,000
N of Palatka River	37,900	36,200	37,000	37,000	36,000
at Leesburg Service Plaza	32,700	31,300	31,900	32,000	32,000
S of CR 561	41,300	40,900	41,800	40,705	40,330
S of SR 50	72,200	66,900	65,700	67,000	67,000
W of SR 429	64,500	59,800	57,600	58,400	58,000
N of SR 408	104,200	99,100	96,600	96,000	96,300
at Turkey Lake Service Pl.	67,700	64,400	63,400	66,000	72,000
N of SR 528	70,500	67,600	69,400	70,900	71,100
N of of Osceola Pkwy.	57,100	54,100	55,000	55,900	55,800
S of US 441	47,900	46,000	46,700	47,800	48,300
at Partin Settlement Rd.	31,400	30,600	31,000	31,500	31,900
S of Neptune Rd.	33,900	32,400	33,100	33,177	33,100
S of 3 Lakes Toll Plaza	26,000	25,000	25,300	25,000	25,000
<b>Total Average</b>	<b>795,300</b>	<b>759,100</b>	<b>761,800</b>	<b>768,454</b>	<b>772,330</b>

Source: Florida Department of Transportation, AADR Report

## Health and Safety Statistics

A large and growing body of research links the built environment to the safety and health. Land-use planning, including transportation decisions, affects human health by influencing a wide range of environmental, physical, and social factors. Although the positive effects of mobility on health are substantial, the negative effects are also profound and costly. This chapter analyzes the safety statistics for motorists, pedestrians, and cyclists along with the CO<sup>2</sup> emissions produced by our transportation network.

### Automobile Safety Statistics



In 2009, MetroPlan Orlando developed an online Geographic Information System (GIS) based crash database to provide its regional partners with an accessible crash analysis and reporting tool. This tool provides current crash and streets data, and it is being used by several law enforcement, traffic engineering, transportation planning agencies, and research institutions across the state.

Automobile crashes continue to trend upward in the Central Florida region, with a 24 percent increase over 2012 numbers. Nonetheless, the area saw great improvements in the injury and fatalities numbers. Injuries decreased by 16%, while fatalities decreased by 10.5% over 2009 numbers. These tables show changes in the total number of auto occupant crashes, injuries and fatalities for each of the nine counties.

<i>Automobile Crash</i>	<i>2009</i>	<i>2010</i>	<i>2011</i>	<i>2012</i>	<i>2013</i>
Brevard County	4,750	4,873	5,283	6,230	6,975
Lake County	2,491	2,540	2,920	3,460	3,602
Marion County	3,321	3,422	3,734	4,102	4,183
Orange County	16,092	17,090	19,121	18,174	25,175
Osceola County	2,795	3,141	2,955	3,349	4,835
Polk County	5,980	5,579	5,537	6,061	7,499
Seminole County	2,574	2,440	3,192	3,199	3,715
Sumter County	672	720	836	605	709
Volusia County	5,685	5,811	5,225	6,386	7,138
<b>CFMPOA Total</b>	<b>44,360</b>	<b>45,616</b>	<b>48,803</b>	<b>51,566</b>	<b>63,831</b>

<i>Automobile Injury</i>	<i>2009</i>	<i>2010</i>	<i>2011</i>	<i>2012</i>	<i>2013</i>
Brevard County	4,324	4,120	3,449	2,749	3,213
Lake County	2,299	2,432	2,060	1,499	2,380
Marion County	3,784	3,428	3,000	2,025	2,017
Orange County	14,272	14,898	13,824	12,938	14,807
Osceola County	2,634	2,933	2,388	2,752	3,006
Polk County	5,376	5,006	4,350	3,048	3,610
Seminole County	2,532	2,237	2,353	2,414	3,378
Sumter County	711	784	686	286	332
Volusia County	4,810	4,983	4,295	3,254	3,402
<b>CFMPOA Total</b>	<b>40,742</b>	<b>40,821</b>	<b>36,405</b>	<b>30,965</b>	<b>36,145</b>

Source: Florida Department of Highway Safety and Motor Vehicles & MetroPlan Orlando Web-Based Crash Database

<i>Automobile Fatality</i>	<i>2009</i>	<i>2010</i>	<i>2011</i>	<i>2012</i>	<i>2013</i>
Brevard County	54	65	68	58	77
Lake County	43	40	48	35	38
Marion County	61	73	59	64	53
Orange County	142	130	130	111	94
Osceola County	50	34	46	23	31
Polk County	94	85	77	69	88
Seminole County	23	32	48	22	35
Sumter County	21	23	18	17	17
Volusia County	94	105	86	90	88
<b>CFMPOA Total</b>	<b>582</b>	<b>587</b>	<b>580</b>	<b>489</b>	<b>521</b>

Source: Florida Department of Highway Safety and Motor Vehicles & MetroPlan Orlando Web-Based Crash Database

### Pedestrian Safety Statistics



Pedestrian safety affects the entire community; the young and old, drivers and walkers, at all times of the day or night. Many unnecessary injuries and fatalities occur because of intoxication or inattentiveness by both drivers and pedestrians. Pedestrian injuries appear to be in a downward trend, with injuries decreasing by 5.8 percent. Fatalities leveled off in 2013, maintaining the almost the same levels as in 2012.

These tables show the changes in the total number of bicyclist and pedestrian injuries and fatalities from 2009 through 2013 as compiled by the Florida Department of Highway Safety and Motor Vehicles and MetroPlan's Web-Based Crash database for the CFMPOA region.

<i>Pedestrian Injury</i>	<i>2009</i>	<i>2010</i>	<i>2011</i>	<i>2012</i>	<i>2013</i>
Brevard County	205	167	110	167	127
Lake County	73	69	58	60	47
Marion County	94	98	84	91	80
Orange County	369	380	430	480	498
Osceola County	76	73	81	57	80
Polk County	193	178	123	148	133
Seminole County	60	46	63	84	92
Sumter County	21	15	16	9	11
Volusia County	211	194	184	185	158
<b>CFMPOA Total</b>	<b>1,302</b>	<b>1,220</b>	<b>1,149</b>	<b>1,281</b>	<b>1,226</b>

<i>Pedestrian Fatality</i>	<i>2009</i>	<i>2010</i>	<i>2011</i>	<i>2012</i>	<i>2013</i>
Brevard County	11	13	11	11	11
Lake County	3	9	9	5	4
Marion County	8	12	9	11	8
Orange County	33	42	31	42	36
Osceola County	8	4	14	2	6
Polk County	17	13	8	14	9
Seminole County	5	11	14	5	9
Sumter County	-	3	1	-	3
Volusia County	20	26	18	15	16
<b>CFMPOA Total</b>	<b>105</b>	<b>133</b>	<b>115</b>	<b>105</b>	<b>102</b>

Source: Florida Department of Highway Safety and Motor Vehicles & MetroPlan Orlando Web-Based Crash Database

### Bicyclist Safety Statistics



As the number of bicyclists using the transportation network continues to increase, so could the number of injuries and fatalities. Injuries decreased by 16% in the area, with Orange and Seminole Counties seeing the largest increases. Fatalities have fluctuated in the five-year span, going from 13 deaths to 35, a 150% increase. These charts show the changes in the total number of bicyclist injuries and fatalities from 2009 through 2013 for the CFMPOA region.

<i>Bicyclist Injury</i>	<i>2009</i>	<i>2010</i>	<i>2011</i>	<i>2012</i>	<i>2013</i>
Brevard County	112	112	112	147	104
Lake County	18	30	26	48	40
Marion County	42	36	42	68	38
Orange County	284	295	347	413	444
Osceola County	27	54	43	51	79
Polk County	91	108	62	115	88
Seminole County	78	64	96	89	128
Sumter County	4	5	4	4	7
Volusia County	147	174	128	179	173
<b>CFMPOA Total</b>	<b>803</b>	<b>878</b>	<b>860</b>	<b>1,114</b>	<b>1,101</b>

<i>Bicyclist Fatality</i>	<i>2009</i>	<i>2010</i>	<i>2011</i>	<i>2012</i>	<i>2013</i>
Brevard County	1	-	4	3	7
Lake County	1	2	-	2	4
Marion County	1	1	-	1	1
Orange County	7	4	8	9	8
Osceola County	-	2	1	-	-
Polk County	3	2	3	3	4
Seminole County	-	1	4	-	6
Sumter County	-	-	2	1	-
Volusia County	1	4	4	2	5
<b>CFMPOA Total</b>	<b>14</b>	<b>16</b>	<b>26</b>	<b>21</b>	<b>35</b>

Source: Florida Department of Highway Safety and Motor Vehicles & MetroPlan Orlando Web-Based Crash Database

## Air Quality



Air pollution is associated with several health issues, including asthma and other respiratory illnesses, heart disease, and cancer. Ground-level ozone, for which motor vehicle emissions are a primary source, has been a concern in the Central Florida area in recent years. An area will be considered to be in nonattainment (not meeting the standard) if the average of the annual fourth-highest ozone readings at any monitoring site for any three-year period equals or exceeds the 75 parts per billion standard.

The following table shows the fourth-highest eight-hour average attainment status for each year, shown in parts per billion, for the CFMPOA region. The EPA has assigned a specific color to each Air Quality Index (AQI) category to make it easier for people to understand whether air pollution is reaching unhealthy levels in their communities. Green represents satisfactory air quality. Yellow represents “moderate” air quality, meaning air quality is acceptable; however, there may be a moderate health concerns for a very small number of people. Orange signifies unhealthy for sensitive groups. Although general public is not likely to be affected persons with heart and lung disease, older adults and children are at greater risk from the presence of particles in the air.

<i>Ozone Monitoring</i>	<i>2009</i>	<i>2010</i>	<i>2011</i>	<i>2012</i>	<i>2013</i>
Melbourne (Brevard)	64	64	66	77	68
Freedom 7 Elem. (Brevard)	61	64	66	68	68
Lost Lake Elem. (Lake)	65	66	69	71	71
Ocala YMCA (Marion)	59	68	67	65	67
County Impound (Marion)	58	65	65	62	65
Winegard Elem. (Orange)	66	71	76	72	73
Lake Isle Estates (Orange)	65	70	78	73	68
Four Corners (Osceola)	63	67	68	66	74
Sikes Elem. (Polk)	65	64	69	85	72
Baptist Children's (Polk)	66	68	70	87	71
Seminole State (Seminole)	62	66	71	69	68
Port Orange (Volusia)	56	61	60	68	64
Daytona Blind Svc. (Volusia)	60	66	64	71	67

Source: Florida Department of Environmental Protection

Note: The three-year attainment average can be determined by averaging the last three years of ozone data for each station.



## Transit Statistics

As the highway system in the CFMPOA region becomes more congested, alternative modes of transportation are becoming increasingly important. Currently, the majority of transit users in the region rely heavily on transit services to get to work, shopping, etc. As a result, this service is essential to the area's economy and the quality of life of many of its citizens.

This chapter looks at fixed-route bus, demand-response (paratransit), and vanpool services provided by the various transit agencies in the CFMPOA region. Due to reporting delays by the Federal Transit Administration to the National Transit Database, FY2013 service numbers were not available at the time of publication.

### LYNX



The LYNX service area comprises Orange, Osceola and Seminole counties, an area of approximately 2,500 square miles. LYNX serves small portions of Lake, Polk and Volusia counties as well. While regular fixed route service does not reach the most rural portions of the service area, LYNX paratransit service is available within all portions of the county boundaries. The transit services provided by LYNX include: Fixed-Route Bus Service, LYMMO Downtown Circulator, Shuttle Services, Transportation Disadvantaged Service, and Van Pooling.

#### *Transit Supplied*

<i>Vehicle Revenue Miles</i>	<i>2008/09</i>	<i>2009/10</i>	<i>2010/11</i>	<i>2011/12</i>	<i>2012/13</i>
Number of Miles	22,840,981	23,192,565	24,583,550	25,794,194	N/A
<i>Vehicle Revenue Hours</i>	<i>2008/09</i>	<i>2009/10</i>	<i>2010/11</i>	<i>2011/12</i>	<i>2012/13</i>
Number of Hours	1,515,885	1,524,265	1,576,812	1,640,660	N/A
<i>Vehicles in Max. Service</i>	<i>2008/09</i>	<i>2009/10</i>	<i>2010/11</i>	<i>2011/12</i>	<i>2012/13</i>
Number of Vehicles	466	464	484	529	N/A

#### *Transit Consumed*

<i>Passenger Miles Traveled</i>	<i>2008/09</i>	<i>2009/10</i>	<i>2010/11</i>	<i>2011/12</i>	<i>2012/13</i>
Number of Miles	151,389,724	148,294,757	156,697,957	164,408,315	N/A
<i>Unlinked Passenger Trips</i>	<i>2008/09</i>	<i>2009/10</i>	<i>2010/11</i>	<i>2011/12</i>	<i>2012/13</i>
Number of Unlinked Trips	23,747,795	24,780,704	26,996,158	29,250,069	N/A

Source: Central Florida Regional Transportation Authority d.b.a. LYNX

### LakeXpress



Public transportation services in Lake County include LakeXpress, the County's fixed-route bus service, and Lake County Connection paratransit services. Lake County began LakeXpress services in May 2007 to provide high-quality public transportation services to paratransit patrons and transit-dependent riders. LakeXpress maintains four fixed-route bus services: Lady Lake and Eustis via U.S. 441; Altoona to Zellwood; and two local routes -- one throughout the City of Leesburg and another through the City of Mount Dora. All routes operate on a one-hour headway schedule.

#### *Transit Service Supplied*

<i>Vehicle Revenue Miles</i>	<i>2009/10</i>	<i>2010/11</i>	<i>2010/11</i>	<i>2011/12</i>	<i>2012/13</i>
Number of Miles	2,229,240	2,097,697	2,097,697	1,933,003	N/A

<i>Vehicle Revenue Hours</i>	<i>2008/09</i>	<i>2009/10</i>	<i>2010/11</i>	<i>2011/12</i>	<i>2012/13</i>
Number of Hours	131,632	135,525	132,759	144,176	N/A
<i>Vehicles in Max. Service</i>	<i>2008/09</i>	<i>2009/10</i>	<i>2010/11</i>	<i>2011/12</i>	<i>2012/13</i>
Number of Vehicles	62	63	63	63	N/A

*Transit Service Consumed*

<i>Passenger Miles Traveled</i>	<i>2008/09</i>	<i>2009/10</i>	<i>2010/11</i>	<i>2011/12</i>	<i>2012/13</i>
Number of Miles	5,737,036	5,027,060	4,819,774	4,848,221	N/A
<i>Unlinked Passenger Trips</i>	<i>2008/09</i>	<i>2009/10</i>	<i>2010/11</i>	<i>2011/12</i>	<i>2012/13</i>
Number of Unlinked Trips	375,320	450,376	449,430	463,941	N/A

Source: National Transit Database (NTD), LakeXpress (Lake County). Image provided by www.ridelakexpress.com

Space Coast Area Transit (SCAT)



Space Coast Area Transit (SCAT) provides the majority of transit service in Brevard County, including both fixed-route and demand response services. SCAT currently operates 17 fixed routes, 1 dial-a-ride, paratransit service, vanpools, and the Volunteers-in-Motion program. A majority of the routes operate Monday through Saturday. Service spans from approximately 6 a.m. to 8:30 p.m., with an average of 60-minute frequencies.

*Transit Service Supplied*

<i>Vehicle Revenue Miles</i>	<i>2008/09</i>	<i>2009/10</i>	<i>2010/11</i>	<i>2011/12</i>	<i>2012/13</i>
Number of Miles	4,067,144	4,229,611	4,124,518	2,125,498	N/A
<i>Vehicle Revenue Hours</i>	<i>2008/09</i>	<i>2009/10</i>	<i>2010/11</i>	<i>2011/12</i>	<i>2012/13</i>
Number of Hours	198,433	194,727	192,183	127,914	N/A
<i>Vehicles in Max. Service</i>	<i>2008/09</i>	<i>2009/10</i>	<i>2010/11</i>	<i>2011/12</i>	<i>2012/13</i>
Number of Vehicles	156	167	166	50	N/A

*Transit Service Consumed*

<i>Passenger Miles Traveled</i>	<i>2008/09</i>	<i>2009/10</i>	<i>2010/11</i>	<i>2011/12</i>	<i>2012/13</i>
Number of Miles	20,416,472	20,699,448	22,807,495	13,369,287	N/A
<i>Unlinked Passenger Trips</i>	<i>2008/09</i>	<i>2009/10</i>	<i>2010/11</i>	<i>2011/12</i>	<i>2012/13</i>
Number of Unlinked Trips	2,016,473	2,237,975	2,460,926	2,185,537	N/A

Source: National Transit Database (NTD), Space Coast Area Transit (SCAT). Image provided by www.ridescat.com

Votran



The Volusia County Council created the county's public transportation system, called Votran, in 1975. Votran is a service of Volusia County Government, and it currently operates 21 fixed routes, 2 flexible routes, trolley service, and paratransit Gold Service for older adults and persons with disabilities. A majority of the routes operate Monday through Saturday. Service spans from approximately 6 a.m. to 7 p.m., with an average of 60-minute headways.

### Transit Service Supplied

<i>Vehicle Revenue Miles</i>	<i>2008/09</i>	<i>2009/10</i>	<i>2010/11</i>	<i>2011/12</i>	<i>2012/13</i>
Number of Miles	5,076,004	5,089,310	4,934,537	4,653,108	N/A
<i>Vehicle Revenue Hours</i>	<i>2008/09</i>	<i>2009/10</i>	<i>2010/11</i>	<i>2011/12</i>	<i>2012/13</i>
Number of Hours	310,659	305,596	299,363	298,722	N/A
<i>Vehicles in Max. Service</i>	<i>2008/09</i>	<i>2009/10</i>	<i>2010/11</i>	<i>2011/12</i>	<i>2012/13</i>
Number of Vehicles	129	129	146	108	N/A

### Transit Service Consumed

<i>Passenger Miles Traveled</i>	<i>2008/09</i>	<i>2009/10</i>	<i>2010/11</i>	<i>2011/12</i>	<i>2012/13</i>
Number of Miles	20,731,955	20,995,871	18,258,768	15,858,124	N/A
<i>Unlinked Passenger Trips</i>	<i>2008/09</i>	<i>2009/10</i>	<i>2010/11</i>	<i>2011/12</i>	<i>2012/13</i>
Number of Unlinked Trips	3,429,608	3,572,005	3,857,158	3,848,303	N/A

Source: National Transit Database (NTD), *Votran (Volusia County)*. Image provided by [www.votran.org](http://www.votran.org)

### Citrus Connection



The Lakeland Area Mass Transit District, known as the Citrus Connection, began services in 1982 with the mission to provide superior transportation services that contribute to the economic growth and quality of life for the communities they serve. The district operates 38 fixed-route buses and 15 Handy buses, paratransit services, in 15 fixed routes. Today the Citrus Connection delivers more than 6,000 people to work, play, school and other destinations every day. Additionally, the Lakeland Area Mass Transit District serves as a contractor to operate services in Winter Haven and express service to Bartow.

### Transit Service Supplied

<i>Vehicle Revenue Miles</i>	<i>2008/09</i>	<i>2009/10</i>	<i>2010/11</i>	<i>2011/12</i>	<i>2012/13</i>
Number of Miles	1,687,921	1,700,804	1,557,915	1,046,543	N/A
<i>Vehicle Revenue Hours</i>	<i>2008/09</i>	<i>2009/10</i>	<i>2010/11</i>	<i>2011/12</i>	<i>2012/13</i>
Number of Hours	111,328	111,727	106,439	72,601	N/A
<i>Vehicles in Max. Service</i>	<i>2008/09</i>	<i>2009/10</i>	<i>2010/11</i>	<i>2011/12</i>	<i>2012/13</i>
Number of Vehicles	36	35	36	22	N/A

### Transit Service Consumed

<i>Passenger Miles Traveled</i>	<i>2008/09</i>	<i>2009/10</i>	<i>2010/11</i>	<i>2011/12</i>	<i>2012/13</i>
Number of Miles	8,068,044	8,172,244	8,298,927	5,760,775	N/A
<i>Unlinked Passenger Trips</i>	<i>2008/09</i>	<i>2009/10</i>	<i>2010/11</i>	<i>2011/12</i>	<i>2012/13</i>
Number of Unlinked Trips	1,556,405	1,572,349	1,558,035	1,104,856	N/A

Source: National Transit Database (NTD), *Lakeland Area Mass Transit District d.b.a. Citrus Connection*. Image provided by [www.ridecitrus.com](http://www.ridecitrus.com)

## Polk County Transit Services



Polk County Transit Services (PCTS) serves as the Community Transportation Coordinator (CTC). The CTC ensures that coordinated transportation services are provided to meet the needs of the transportation disadvantaged population of Polk County. This population includes the most vulnerable, the elderly and disabled. The transportation service provides a safety net and gives citizens access to basic needs such as medical treatment, dialysis centers, nutritional and other life-sustaining services. Additionally, PCTS is the grant recipient and program administrator for Winter Haven Area Transit and "The Bus" rural fixed route system.

### Transit Service Supplied

<i>Vehicle Revenue Miles</i>	<i>2008/09</i>	<i>2009/10</i>	<i>2010/11</i>	<i>2011/12</i>	<i>2012/13</i>
Number of Miles	1,911,551	1,893,236	1,931,472	1,931,447	N/A
<i>Vehicle Revenue Hours</i>	<i>2008/09</i>	<i>2009/10</i>	<i>2010/11</i>	<i>2011/12</i>	<i>2012/13</i>
Number of Hours	116,849	114,892	116,634	120,339	N/A
<i>Vehicles in Max. Service</i>	<i>2008/09</i>	<i>2009/10</i>	<i>2010/11</i>	<i>2011/12</i>	<i>2012/13</i>
Number of Vehicles	70	55	63	60	N/A

### Transit Service Consumed

<i>Passenger Miles Traveled</i>	<i>2008/09</i>	<i>2009/10</i>	<i>2010/11</i>	<i>2011/12</i>	<i>2012/13</i>
Number of Miles	4,063,522	4,036,165	4,342,464	6,222,069	N/A
<i>Unlinked Passenger Trips</i>	<i>2008/09</i>	<i>2009/10</i>	<i>2010/11</i>	<i>2011/12</i>	<i>2012/13</i>
Number of Unlinked Trips	585,251	578,188	643,940	633,316	N/A

Source: National Transit Database (NTD), Polk County Transit Services (PCTS). Image provided by [www.polk-county.net](http://www.polk-county.net)

## SunTran



SunTran operates fixed-route bus service on six routes in the Ocala area. The SunTran bus fleet is equipped to carry disabled passengers, who ride at reduced fares. SunTran is a cooperative effort of the Ocala/Marion County Transportation Planning Organization, Marion County, the City of Ocala, the Florida Department of Transportation and the Federal Transportation Administration. Bus service is provided Monday through Saturday, from 5:00 a.m. through 8:00 p.m.

### Transit Service Supplied

<i>Vehicle Revenue Miles</i>	<i>2008/09</i>	<i>2009/10</i>	<i>2010/11</i>	<i>2011/12</i>	<i>2012/13</i>
Number of Miles	438,000	438,000	442,000	437,406	N/A
<i>Vehicle Revenue Hours</i>	<i>2008/09</i>	<i>2009/10</i>	<i>2010/11</i>	<i>2011/12</i>	<i>2012/13</i>
Number of Hours	27,600	27,600	27,950	27,664	N/A
<i>Vehicles in Max. Service</i>	<i>2008/09</i>	<i>2009/10</i>	<i>2010/11</i>	<i>2011/12</i>	<i>2012/13</i>
Number of Vehicles	6	6	6	6	N/A

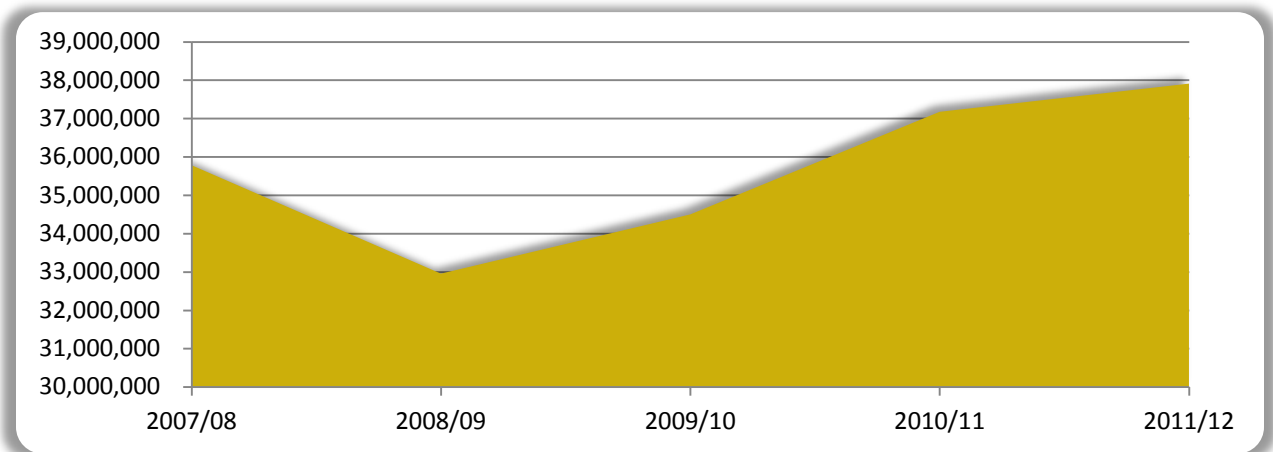
### Transit Service Consumed

Passenger Miles Traveled	2008/09	2009/10	2010/11	2011/12	2012/13
Number of Miles	1,234,200	1,211,100	1,369,500	2,147,346	N/A
Unlinked Passenger Trips	2008/09	2009/10	2010/11	2011/12	2012/13
Number of Unlinked Trips	374,000	367,000	415,000	421,521	N/A

Source: National Transit Database (NTD), SunTran. Image provided by [www.ocalaf1.org/suntran](http://www.ocalaf1.org/suntran)

### Five-Year Historic Trend - Unlinked Transit Passenger Trips

This graph illustrates the five-year unlinked passenger trip trend total for Brevard, Lake, Marion, Orange, Osceola, Polk, Seminole, Sumter, and Volusia Counties - the CFMPOA region.



## Aviation, Rail, Sea, and Space Port Statistics

Aviation is another important mode of transportation in the CFMPOA region. Due to the large number of tourists, business travelers, and residents flying to and from the Central Florida area, the region's international airports have experienced major growth during the past decade. More recently, they have proved to be indicators of the economy.

The CFMPOA region is served by four international airports:

- Orlando International Airport, Orange County (MCO)
- Orlando-Sanford International Airport, Seminole County (SFB)
- Melbourne International Airport, Brevard County (MLB)
- Daytona Beach International Airport, Volusia County (DAB)

### Orlando International Airport, Orange County (MCO)



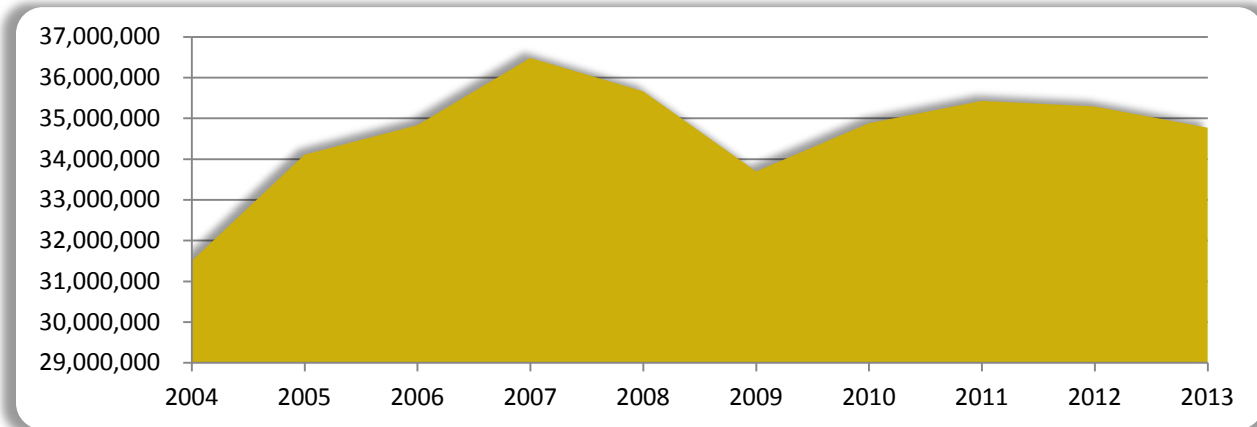
Due to the high-volume tourist market, Orlando International Airport continues to be one of the busiest airports in the U.S. It is the second-busiest airport in Florida, after Miami International; the 13th-busiest airport in the United States; and the 29th-busiest airport in the world, by passenger traffic. These tables show the number of passengers, tons of cargo, and operations at the Orlando International Airport from 2009 to 2013:

<i>Orlando Int'l Airport</i>	<i>2009</i>	<i>2010</i>	<i>2011</i>	<i>2012</i>	<i>2013</i>
Total Passengers	33,693,649	34,877,899	35,426,006	35,288,887	34,768,544
Tons of Cargo	155,535	172,001	187,095	172,957	169,725
Aircraft Operations	300,431	307,784	309,884	301,102	291,662

*Source: Greater Orlando Aviation Authority*

### *10-Year Historic Trend - Total Passengers*

This graph illustrates the 10-year total passenger trend for Orlando International Airport.



### Orlando-Sanford International Airport, Seminole County (SFB)

The Orlando-Sanford International Airport has also grown rapidly in recent years. It began as a place primarily for international chartered and scheduled flights to and from Europe, but it has developed into an alternative to Orlando International for north metro area residents. Orlando-Sanford handles international service, as well as domestic flights to a growing number of U.S. cities. In 2013, 75% of its passengers came from domestic flights.

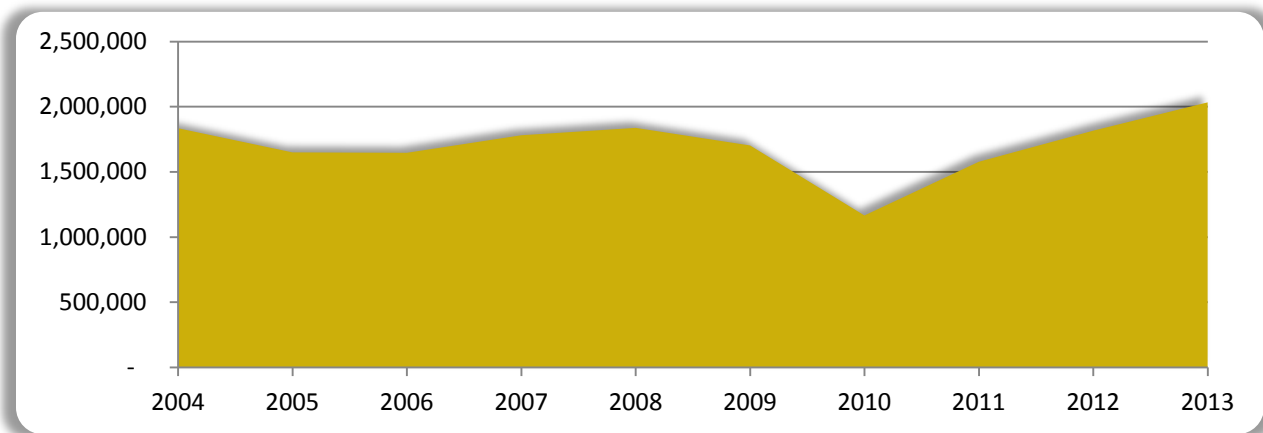
These tables show the number of passengers, tons of cargo, and operations at the Orlando- Sanford International Airport from 2009 to 2013:

<i>Orlando-Sanford Int'l</i>	<i>2009</i>	<i>2010</i>	<i>2011</i>	<i>2012</i>	<i>2013</i>
Total Passengers	1,702,412	1,165,435	1,577,307	1,815,729	2,032,680
Tons of Cargo	2,215	3,555	3,022	3,179	3,112
Aircraft Operations	219,745	189,675	218,181	301,072	269,708

Source: Sanford Airport Authority, *Monthly Activity Report*

### *10-Year Historic Trend - Total Passengers*

This graph illustrates the 10-year total passenger trend for Orlando-Sanford International Airport.



### Melbourne International Airport, Brevard County (MLB)

The Melbourne International Airport currently operates with three runways accommodating general-aviation, commercial, and cargo aircraft. The airport has five airlines operating out of eight gates and seven jet ways, which provide service primarily to the eastern United States as well as the Bahamas.

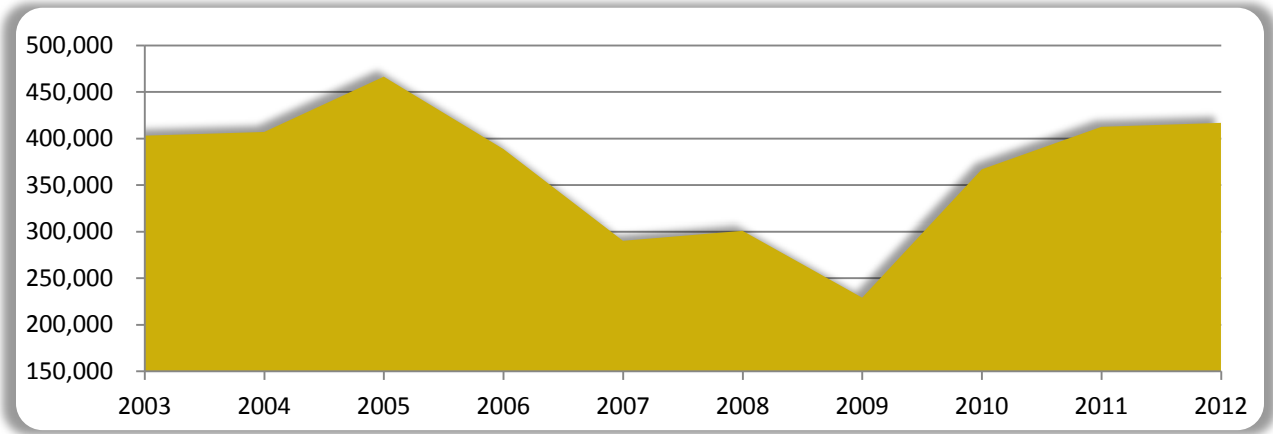
These tables show the number of passengers, tons of cargo, and operations at the Melbourne International Airport from 2009 to 2012:

<i>Melbourne Int'l Airport</i>	<i>2009</i>	<i>2010</i>	<i>2011</i>	<i>2012</i>	<i>2013</i>
Total Passengers	229,093	366,848	412,525	416,780	443,717
Tons of Cargo	56	72	504	242	107
Aircraft Operations	141,202	146,205	197,454	159,112	131,140

Source: Melbourne Airport Authority

**10-Year Historic Trend - Total Passengers**

This graph illustrates the 10-year total passenger trend for MLB



**Daytona Beach International Airport, Volusia County (DAB)**

The Daytona Beach International Airport is a 160,000-square-foot, modern, six-gate terminal complex. Currently, three major airlines operate out of this facility providing direct service to Atlanta and Charlotte, as well as the Bahamas.

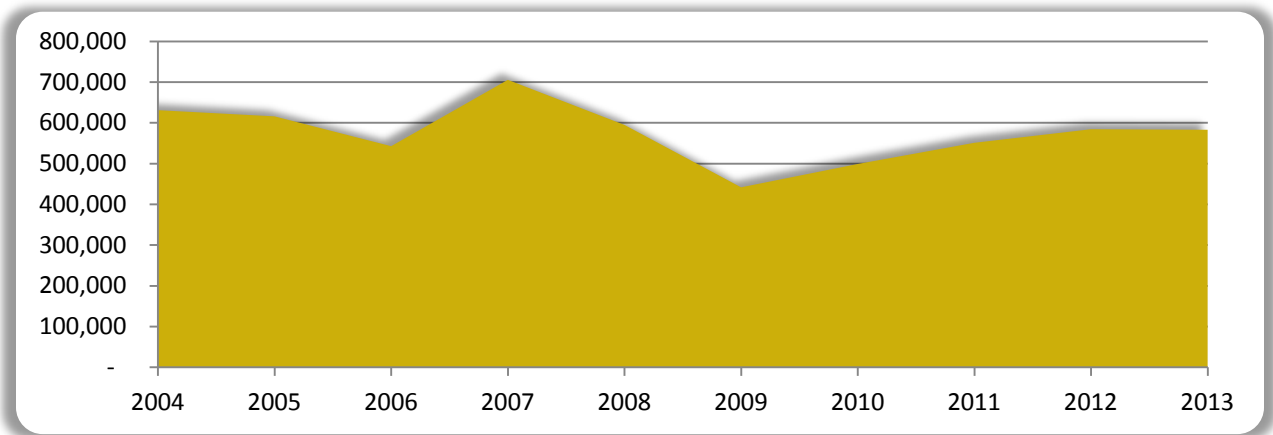
These tables show the number of passengers, tons of cargo, and operations at the Daytona Beach International Airport from 2009 to 2013:

<i>Daytona Beach Int'l</i>	2009	2010	2011	2012	2013
Total Passengers	423,725	498,978	550,986	584,280	582,925
Tons of Cargo	89	90	110	120	136
Aircraft Operations	311,801	267,173	220,962	284,512	288,705

Source: Daytona Beach International Airport

**10-Year Historic Trend - Total Passengers**

This graph illustrates the 10-year total passenger trend for DAB





## Central Florida MPO Alliance Regional Total (MCO, SFB, MLB, DAB)

<i>CFMPOA Region Total</i>	<i>2009</i>	<i>2010</i>	<i>2011</i>	<i>2012</i>	<i>2013</i>
Total Passengers	36,048,879	36,909,160	37,966,824	38,105,676	37,827,866
Tons of Cargo	157,895	175,718	190,731	177,360	173,080
Aircraft Operations	973,183	910,837	946,481	1,052,866	981,215

## Passenger Rail Service



Central Florida's passenger rail service is about to change dramatically. With SunRail commencing service in the spring of 2014, rail services will have a major impact on Central Florida's transportation systems. The project is considered the first piece of a larger passenger rail network planned for the region.

Currently, passenger rail service in the CFMPOA region is provided by Amtrak, which has stations in Deland, Winter Park, Orlando, Kissimmee, Lakeland, and Winter Haven. In addition to its regular passenger service, Amtrak's Auto Train operates daily between Lorton, Virginia (outside of Washington, D.C.) and the Auto Train terminal off I-4 and SR 46 in Sanford. These tables show the number of rail passengers who used these stations from FY 2008/09 through FY 2012/13:

<i>Amtrak - Deland</i>	<i>2008/09</i>	<i>2009/10</i>	<i>2010/11</i>	<i>2011/12</i>	<i>2012/13</i>
Number of Passengers	25,965	25,982	28,663	28,553	26,502

<i>Amtrak - Kissimmee</i>	<i>2008/09</i>	<i>2009/10</i>	<i>2010/11</i>	<i>2011/12</i>	<i>2012/13</i>
Number of Passengers	41,054	43,163	47,823	48,521	44,906

<i>Amtrak - Lakeland</i>	<i>2007/08</i>	<i>2008/09</i>	<i>2009/10</i>	<i>2010/11</i>	<i>2012/13</i>
Number of Passengers	24,179	22,212	24,220	24,696	22,829

<i>Amtrak - Orlando</i>	<i>2008/09</i>	<i>2009/10</i>	<i>2010/11</i>	<i>2011/12</i>	<i>2012/13</i>
Number of Passengers	145,775	159,533	179,124	172,502	160,442

<i>AutoTrain - Sanford</i>	<i>2008/09</i>	<i>2009/10</i>	<i>2010/11</i>	<i>2011/12</i>	<i>2012/13</i>
Number of Passengers	232,955	244,252	259,944	264,096	265,274

<i>Amtrak - Winter Haven</i>	<i>2008/09</i>	<i>2009/10</i>	<i>2010/11</i>	<i>2011/12</i>	<i>2012/13</i>
Number of Passengers	22,881	22,992	26,188	24,565	22,205

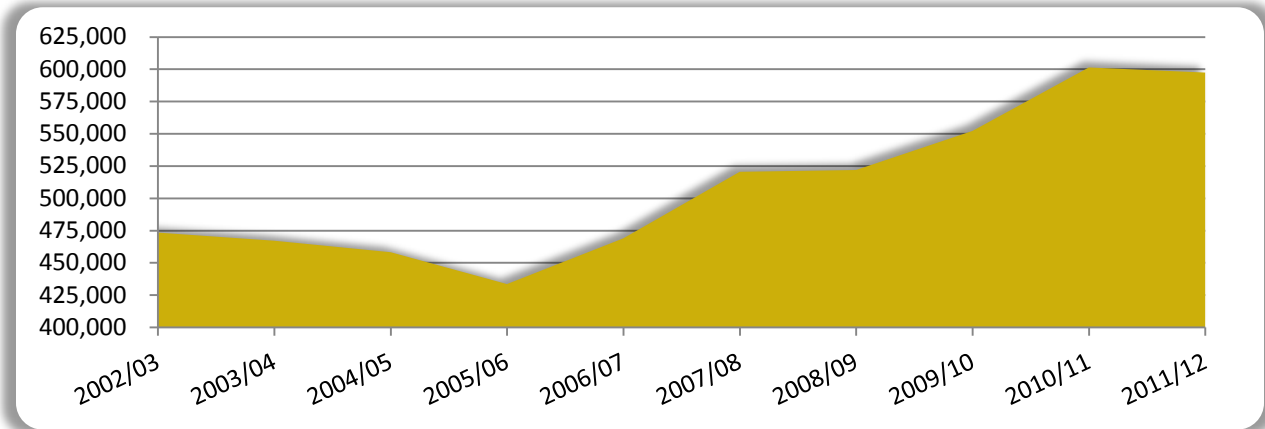
<i>Amtrak - Winter Park</i>	<i>2008/09</i>	<i>2009/10</i>	<i>2010/11</i>	<i>2011/12</i>	<i>2012/13</i>
Number of Passengers	30,998	31,962	34,858	33,455	30,142

<i>Amtrak - CFMPOA Region</i>	<i>2008/09</i>	<i>2009/10</i>	<i>2010/11</i>	<i>2011/12</i>	<i>2012/13</i>
Number of Passengers	521,840	552,104	601,296	597,322	572,300

Source: National Railroad Passenger Corporation d.b.a. Amtrak

### 10-Year Historic Trend - Amtrak Ridership

This graph illustrates the 10-year Amtrak total ridership trend for the seven stations within the CFMPOA region.



### Port Canaveral Statistics



Port Canaveral is the second-busiest port in the world with its cruise lines, cargo lines and shippers capabilities. Although the port is in Brevard County, and thus outside of the Orlando Metropolitan Area, much of the cargo that is handled at the port, and many of the port's cruise ship passengers, are destined for this area. As a result, Port Canaveral is considered an important regional asset.

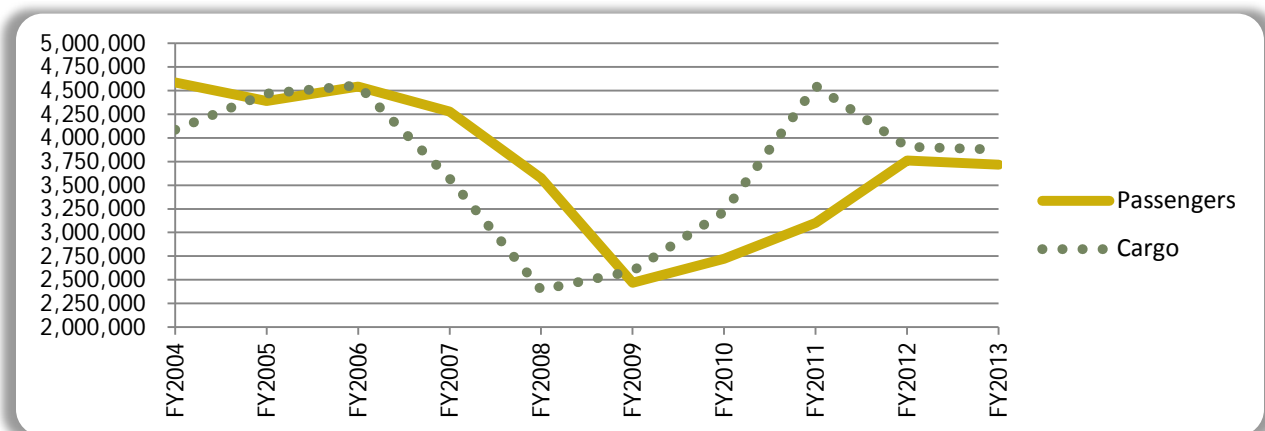
This port's freight and passenger statistics from FY 2008/09 through FY 2012/13 are shown in the following tables:

Port Canaveral	2008/09	2009/10	2010/11	2011/12	2012/13
Number of Passengers	3,250,775	2,802,951	3,144,668	4,004,283	3,717,586
Tons of Cargo	2,626,795	3,218,144	4,547,724	3,904,986	3,874,266

Source: Canaveral Port Authority

### 10-Year Historic Trend - Port Canaveral

This graph illustrates the 10-year passenger and cargo trend for Port Canaveral.



## Space Launch Statistics



A form of transportation that is unique to the CFMPOA area is space travel. The area is home to the Cape Canaveral Spaceport in Brevard County, where NASA's space launches have taken place for more than 50 years. Although the Space Shuttle program ended in 2011, it is being replaced with NASA's Commercial Crew Program (CCP). CCP is an innovative public-private partnership that helps the aerospace industry in the U.S. to develop space transportation systems that can safely launch astronauts to the International Space Station (ISS) and other low-Earth orbit destinations.

NASA has committed about \$1.5 billion to develop commercial crew systems since 2010, with most of that awarded last year to The Boeing Co., Sierra Nevada Corp. and SpaceX. These three companies hope to complete system designs in 2014 and could launch crews on test flights from Kennedy Space Center (KSC) as soon as 2015 or 2016. Meanwhile, these companies continue to test and launch cargo missions to the ISS at KSC.

The number of space launches from 2009 through 2013 is shown in the table below.

<i>Space Launches</i>	<i>2009</i>	<i>2010</i>	<i>2011</i>	<i>2012</i>	<i>2013</i>
Space Shuttle	5	2	3	0	0
Satellite/Spacecraft	11	9	7	10	10
Total Launches	16	11	10	10	10

Source: *Space Florida*