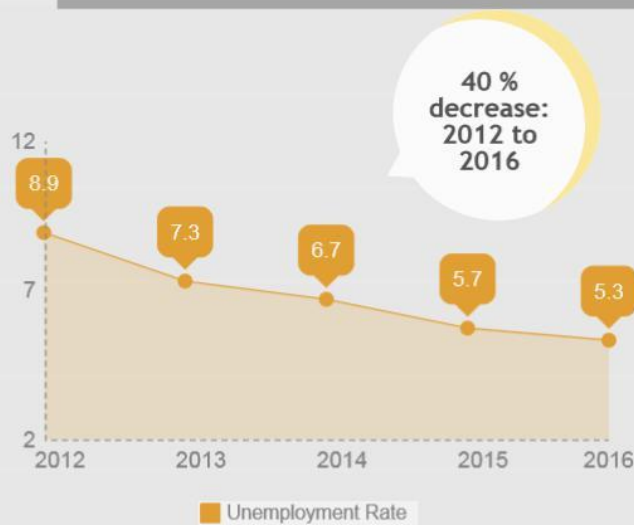
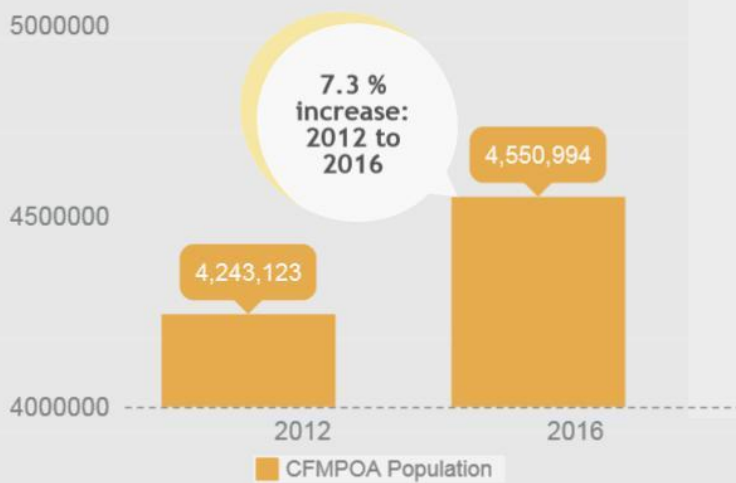


# REGIONAL INDICATORS - 2016

A report on transportation system indicators for the Central Florida MPO Alliance



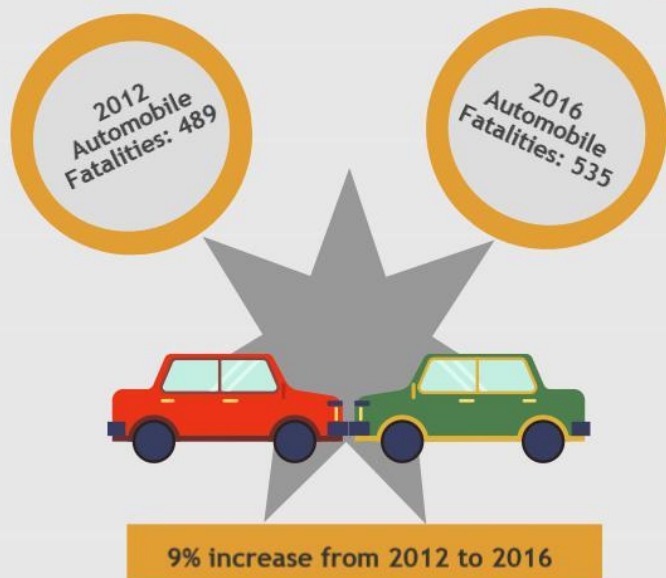
## POPULATION ↑



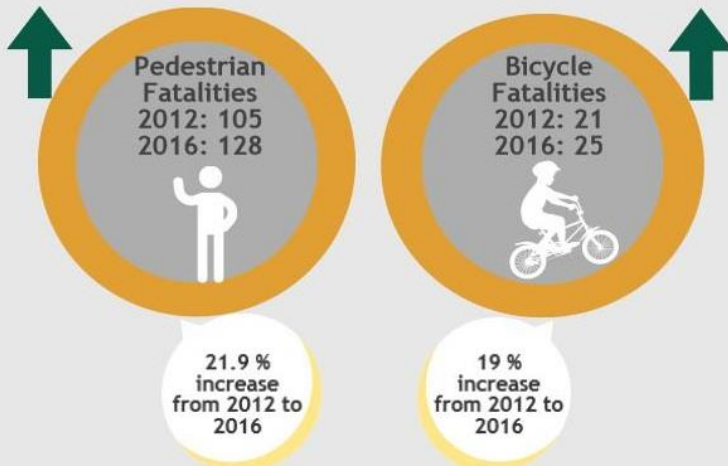
## UNEMPLOYMENT RATE ↓

As the impacts of the economic recession wears off, the Central Florida MPO Alliance (CFMPOA) region saw a large decrease in unemployment rate from 2012 to 2016.

## CRASH FATALITIES ↑



# CRASH FATALITIES



# AIR TRAVEL ↑



Due to the large number of tourists, business travelers, and residents flying to and from the Central Florida area, the region's international airports have experienced major growth.

# AIR QUALITY



# ABOUT

The Central Florida Metropolitan Planning Organization Alliance (CFMPOA) is a coalition of transportation and government organizations committed to addressing transportation challenges on a regional basis.

Each year, the Central Florida MPO Alliance collects data from federal, state and local sources to evaluate trends affecting the region's transportation system in the nine-county region. Results are compiled in Regional Indicators: A Report on Transportation System Indicators. The latest report analyzes data through the year 2016 and includes statistics on demographics, highways, health/safety, transit, aviation, rail, sea and space port.

Data includes information for Brevard, Lake, Marion, Orange, Osceola, Seminole, Sumter, Polk & Volusia counties of Florida.

View the complete report online at [www.cfmpoa.org](http://www.cfmpoa.org)

