

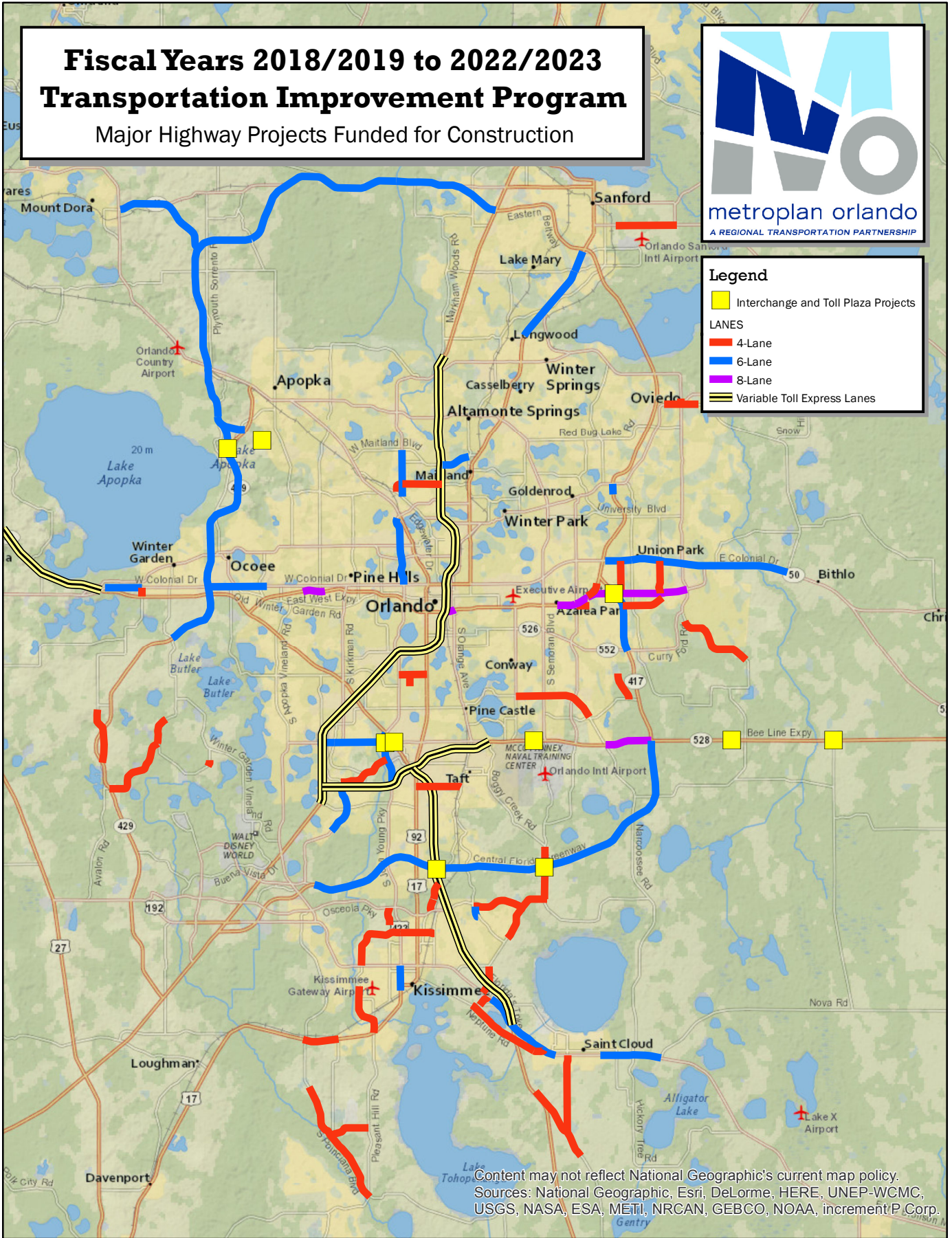
# Fiscal Years 2018/2019 to 2022/2023 Transportation Improvement Program

Major Highway Projects Funded for Construction



### Legend

- Interchange and Toll Plaza Projects
- LANES**
- 4-Lane
- 6-Lane
- 8-Lane
- Variable Toll Express Lanes

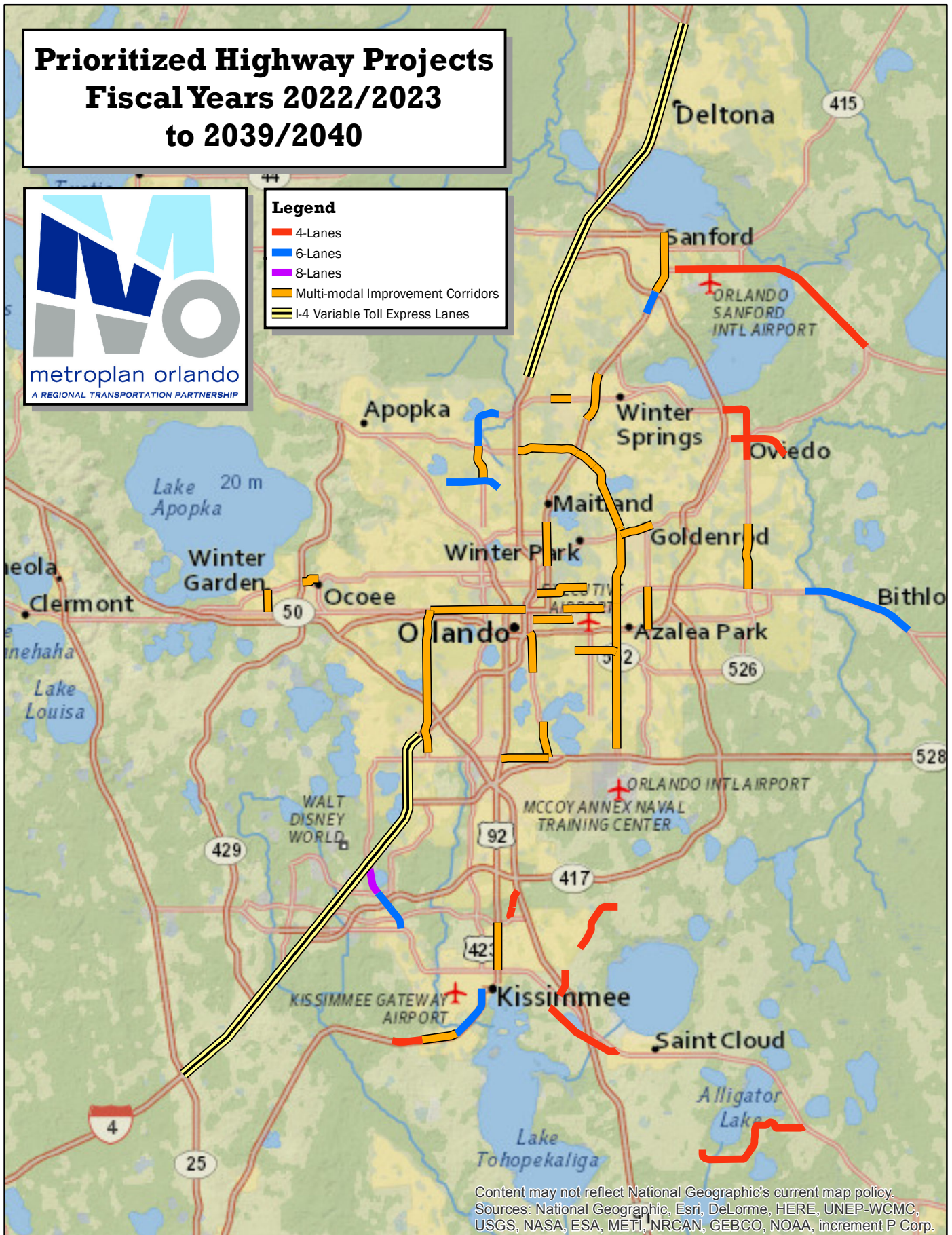


Content may not reflect National Geographic's current map policy.  
Sources: National Geographic, Esri, DeLorme, HERE, UNEP-WCMC, USGS, NASA, ESA, METI, NRCAN, GEBCO, NOAA, increment P Corp.

# Prioritized Highway Projects Fiscal Years 2022/2023 to 2039/2040



- Legend**
- 4-Lanes
  - 6-Lanes
  - 8-Lanes
  - Multi-modal Improvement Corridors
  - I-4 Variable Toll Express Lanes



Content may not reflect National Geographic's current map policy.  
Sources: National Geographic, Esri, DeLorme, HERE, UNEP-WCMC, USGS, NASA, ESA, METI, NRCAN, GEBCO, NOAA, increment P Corp.

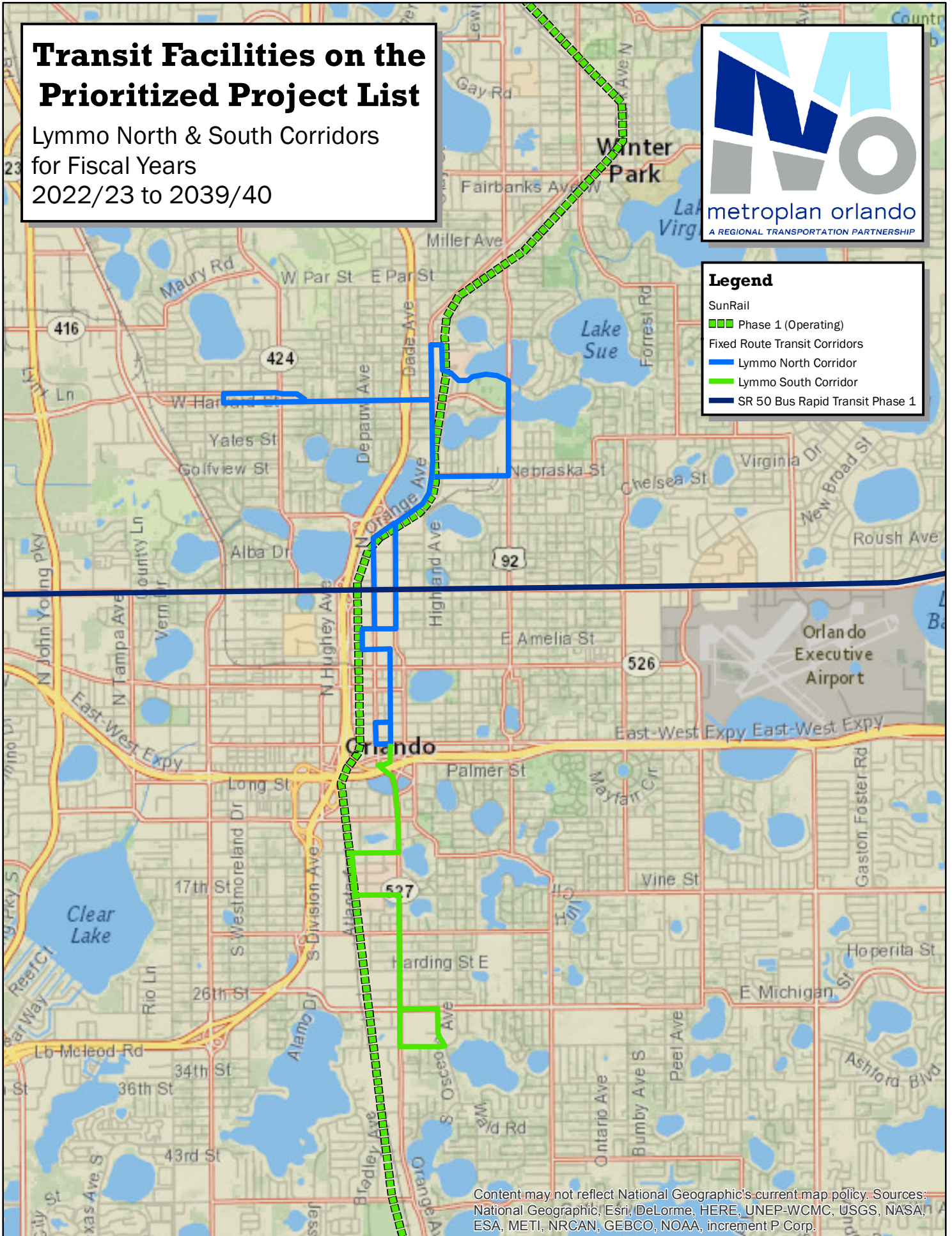
# Transit Facilities on the Prioritized Project List

Lymmo North & South Corridors  
for Fiscal Years  
2022/23 to 2039/40



**Legend**

- SunRail
- Phase 1 (Operating)
- Fixed Route Transit Corridors
- Lymmo North Corridor
- Lymmo South Corridor
- SR 50 Bus Rapid Transit Phase 1



Content may not reflect National Geographic's current map policy. Sources: National Geographic, ESRI, DeLorme, HERE, UNEP-WCMC, USGS, NASA, ESA, METI, NRCAN, GEBCO, NOAA, increment P Corp.

# Transit Facilities on the Prioritized Project List

Transit Facility Improvements for Fiscal Years 2022/23 to 2039/40

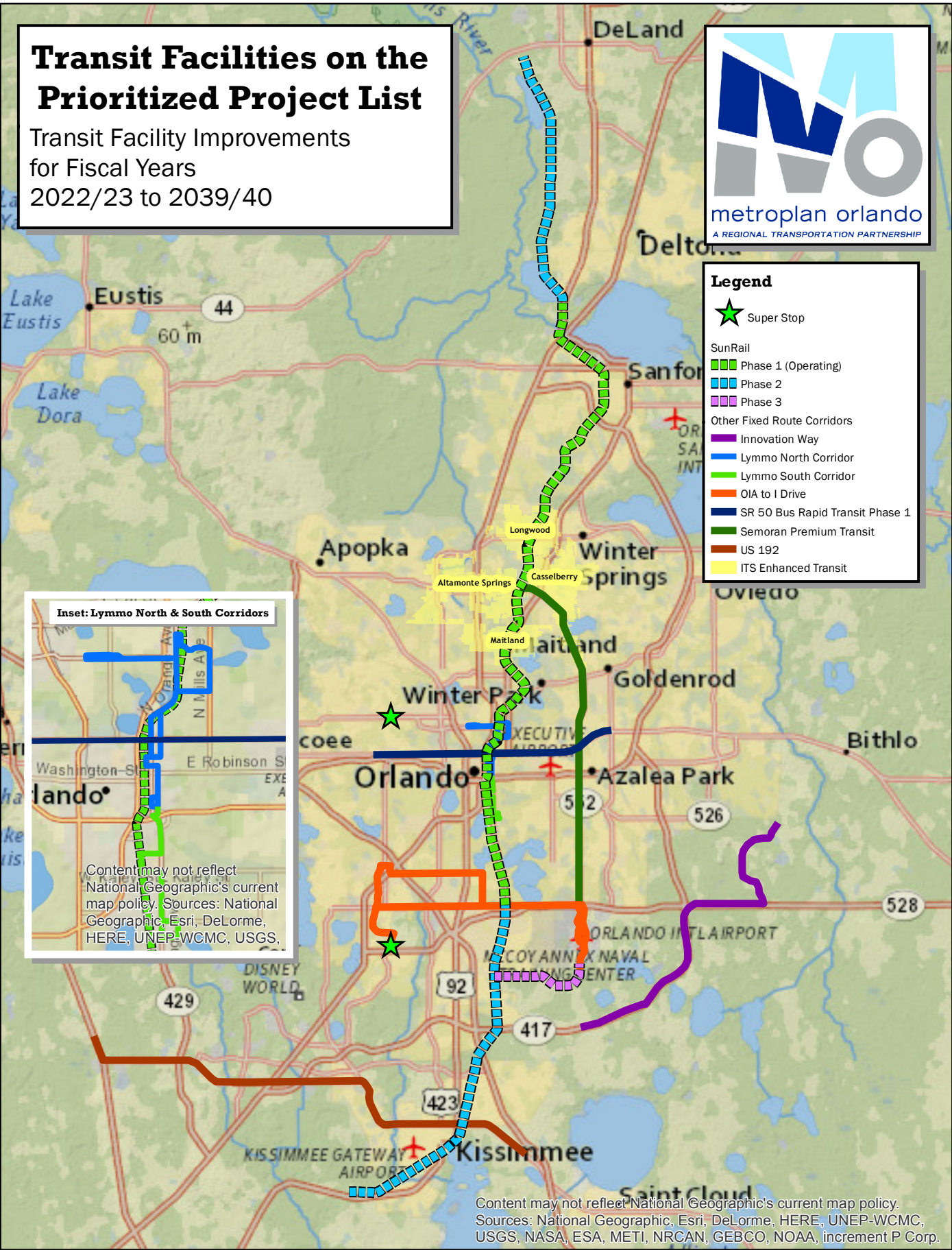


**Legend**

- ★ Super Stop
- SunRail
  - Phase 1 (Operating)
  - Phase 2
  - Phase 3
- Other Fixed Route Corridors
  - Innovation Way
  - Lymmo North Corridor
  - Lymmo South Corridor
  - OIA to I Drive
  - SR 50 Bus Rapid Transit Phase 1
  - Semoran Premium Transit
  - US 192
  - ITS Enhanced Transit

**Inset: Lymmo North & South Corridors**

Content may not reflect National Geographic's current map policy. Sources: National Geographic, Esri, DeLorme, HERE, UNEP-WCMC, USGS,




Content may not reflect National Geographic's current map policy. Sources: National Geographic, Esri, DeLorme, HERE, UNEP-WCMC, USGS, NASA, ESA, METI, NRCAN, GEBCO, NOAA, increment P Corp.

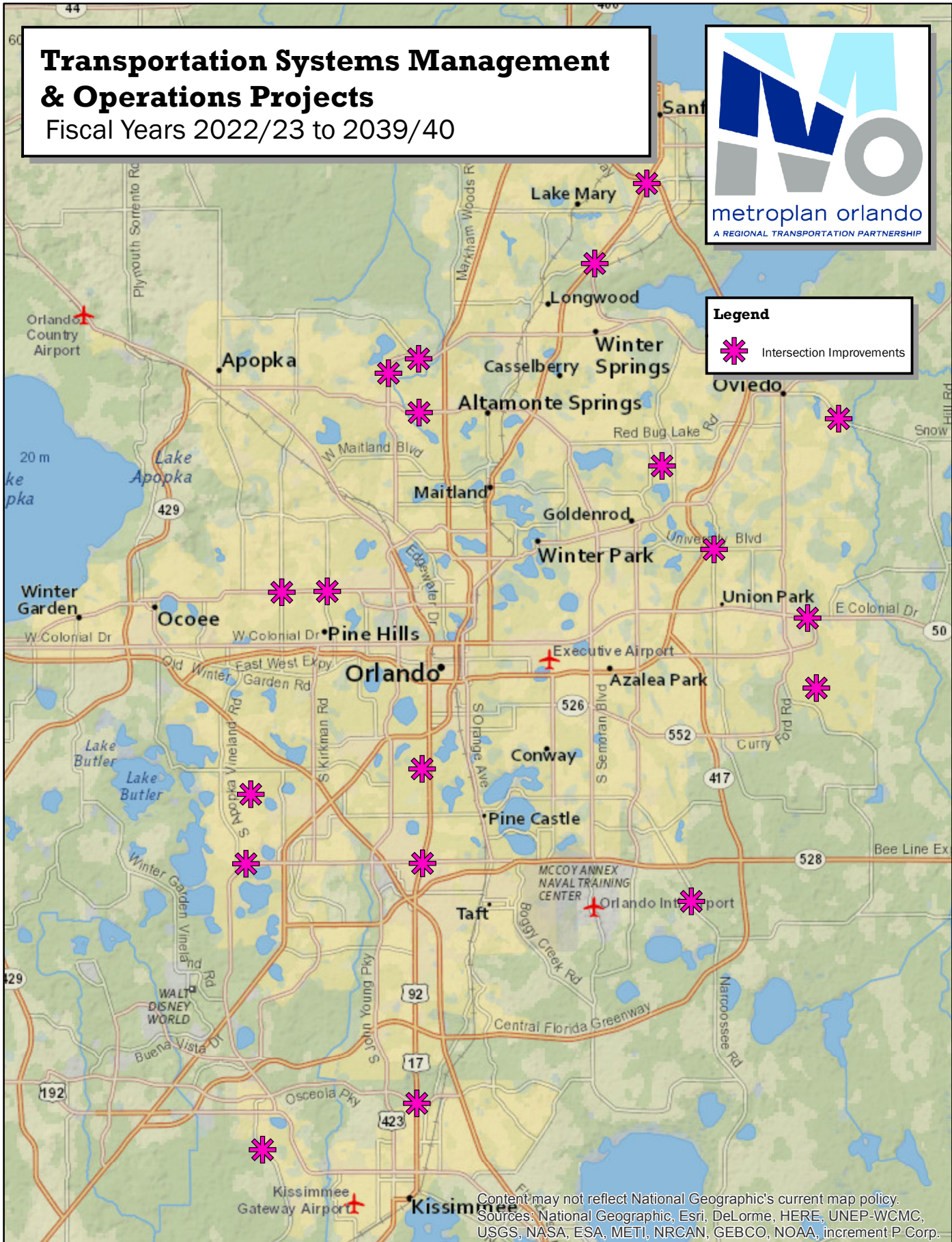
# Transportation Systems Management & Operations Projects

Fiscal Years 2022/23 to 2039/40



**Legend**

-  Intersection Improvements



Content may not reflect National Geographic's current map policy.  
Sources: National Geographic, Esri, DeLorme, HERE, UNEP-WCMC, USGS, NASA, ESA, METI, NRCAN, GEBCO, NOAA, increment P Corp.

# Existing, Funded & Prioritized Bicycle & Pedestrian Projects

Programmed Projects: FY 2018/19 to 2022/23  
 Prioritized Projects: FY 2022/23 to 2039/40



**Legend**

**Prioritized Facilities**

- Shared Use Paths (Red line)
- Ped and Bike Improvements (Red dashed line)
- Pedestrian Improvements (Red dotted line)
- Sidewalk (Red dashed line)
- Streetscape (Red dashed line)
- Overpass (Red square)

**Funded Facilities**

- Shared Use Path (Orange line)
- Pedestrian Improvements (Orange dashed line)
- Sidewalk (Orange dashed line)
- Overpass or Underpass (Orange square)

**Existing Facilities**

- Shared Use Paths (Green line)

