



**CENTRAL
FLORIDA
EXPRESSWAY
AUTHORITY**

Established in 2014 with an expanded mandate to build and maintain a regional transportation network that connects **Brevard, Lake, Orange, Osceola** and **Seminole** counties.

125 Miles

VISION

To provide the region with a world-class, integrated mobility network that drives economic prosperity and quality of life.

MISSION

To build, operate and maintain a mobility network through accountability, fiscally sound practices and a community focus.

Putting the Local Community in the Driver's Seat

CFX is one of the few toll agencies in the nation where **local elected officials** represent the **majority** of its governing board.



Brenda Carey
Chairman,
Seminole County Representative



Buddy Dyer
Vice Chairman,
Mayor of Orlando



Betsy VanderLey
Treasurer,
Orange County Representative



Brandon Arrington
Osceola County Representative



Leslie Campione
Lake County Representative



Jerry Demings
Orange County Mayor



Andria Herr
Governor's Appointee



Jay Madara
Governor's Appointee



Curt Smith
Brevard County Representative



To Be Appointed
Governor's Appointee

**CFX Governing Board is
comprised of 10 members:**

Mayor of Orange County
Mayor of the City of Orlando
Brevard County Representative
Lake County Representative
Orange County Representative
Osceola County Representative
Seminole County Representative
3 gubernatorial appointees

**CENTRAL
FLORIDA
EXPRESSWAY
AUTHORITY**

Planning for the Future of our Region

**2040
Master
Plan**

**\$2.5B
Five-Year
Work Plan**

**CFX
Strategic
Plan**

**Sustainability
Study**

\$2.5 Billion Five-Year Work Plan to Accommodate Future Growth

CENTRAL
FLORIDA
EXPRESSWAY
AUTHORITY

H EXIT 16
551
Goldenrod Rd
1 1/4 MILES

Key Interchange Projects

40 centerline miles of CFX roadways are currently being widened

43 centerline miles to be resurfaced

SR 408 / SR 417
SR 528 / SR 436 near Orlando Intl Airport
SR 429 / Stoneybrook
SR 528 / Dallas Blvd
SR 408 / I-4 Interchange*


Current Expansion Projects

Lake/Orange County Connector
Osceola Parkway Extension
Poinciana Parkway Extension



*Contribution to FDOT

Major Projects Map FY 2020-2024 Work Plan



LEGEND

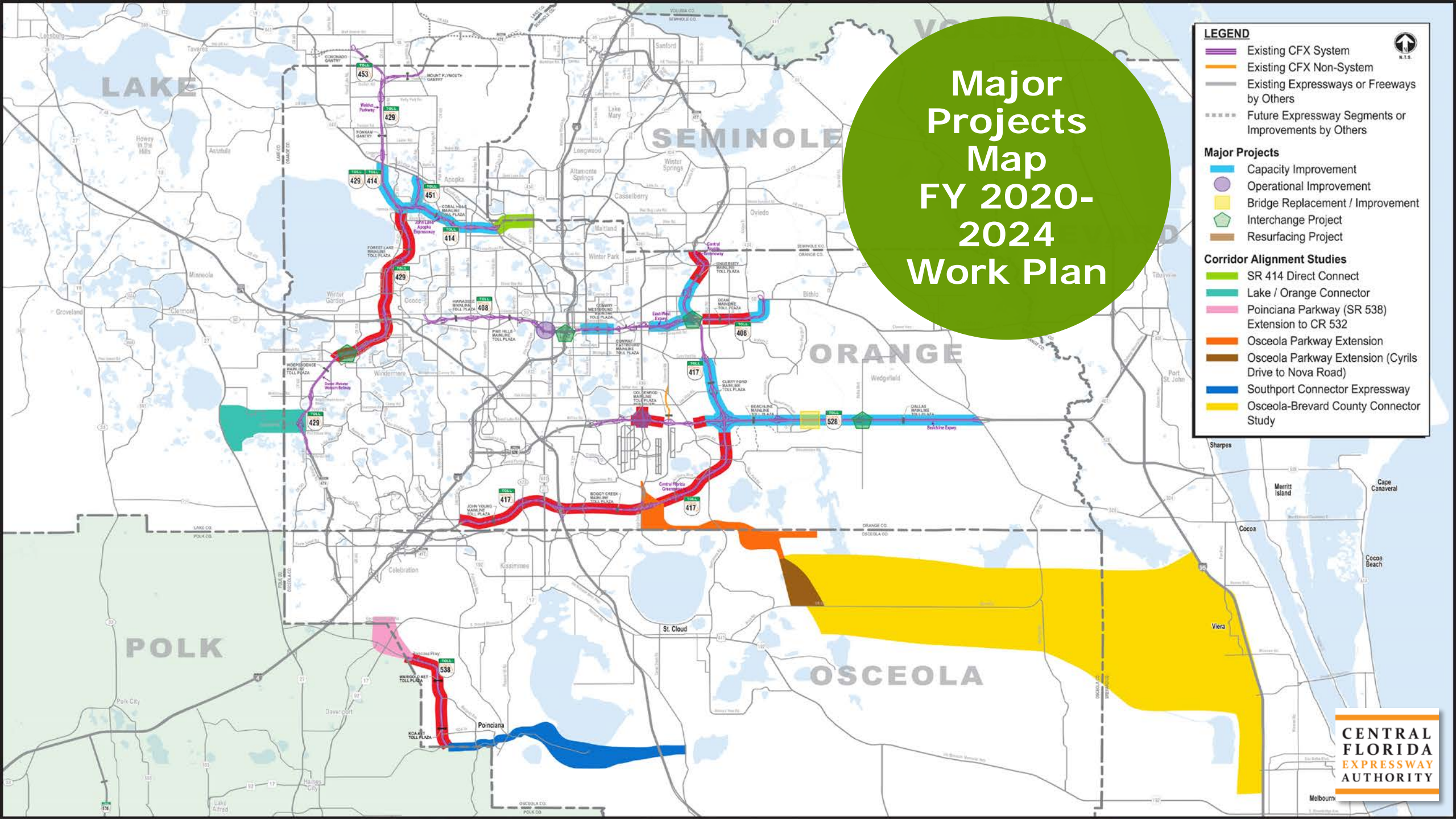
-  Existing CFX System
-  Existing CFX Non-System
-  Existing Expressways or Freeways by Others
-  Future Expressway Segments or Improvements by Others

Major Projects

-  Capacity Improvement
-  Operational Improvement
-  Bridge Replacement / Improvement
-  Interchange Project
-  Resurfacing Project

Corridor Alignment Studies

-  SR 414 Direct Connect
-  Lake / Orange Connector
-  Poinciana Parkway (SR 538) Extension to CR 532
-  Osceola Parkway Extension
-  Osceola Parkway Extension (Cyrlis Drive to Nova Road)
-  Southport Connector Expressway
-  Osceola-Brevard County Connector Study



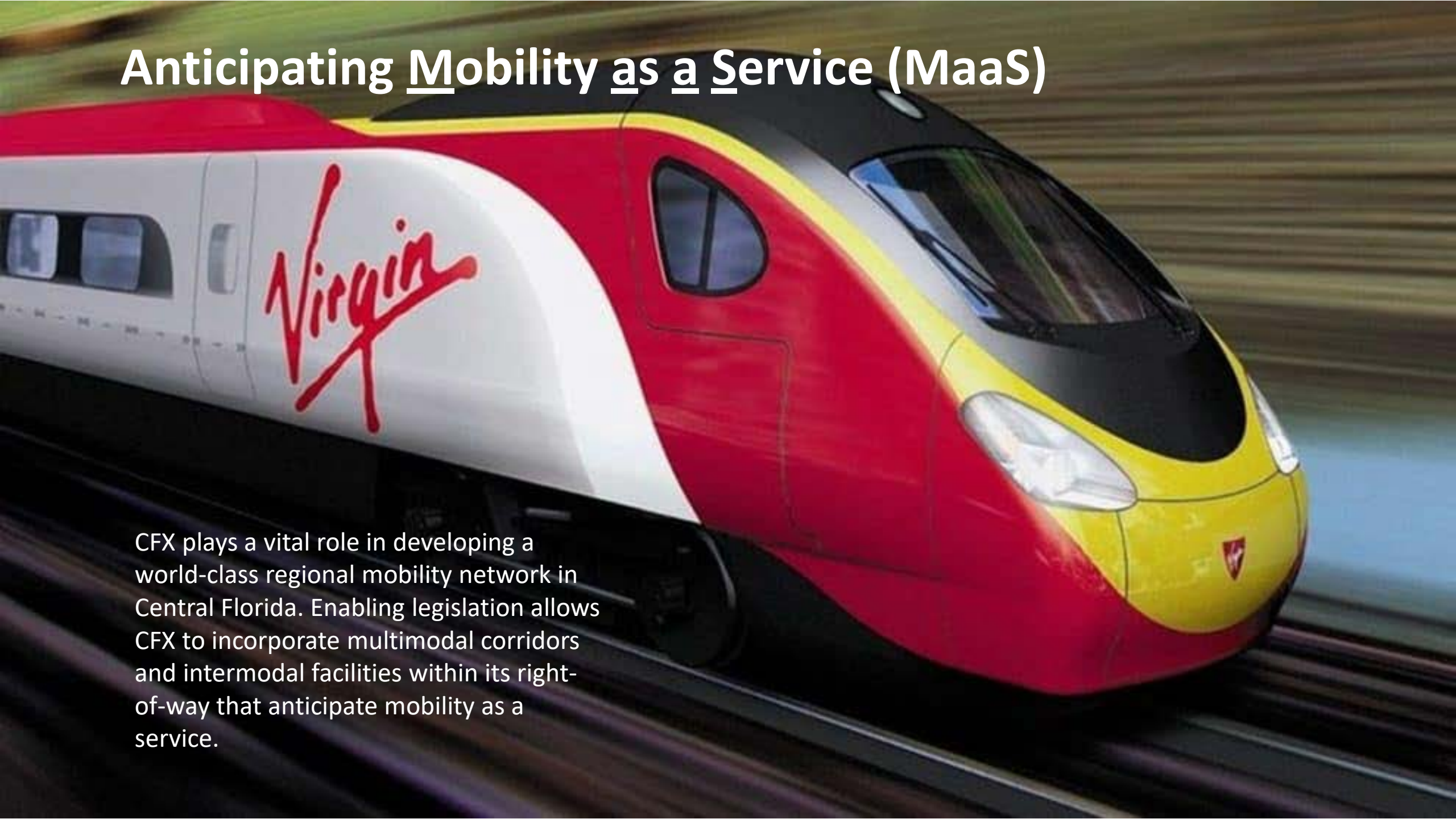
Technology

*Today
and
Future*



Anticipating Mobility as a Service (MaaS)

CFX plays a vital role in developing a world-class regional mobility network in Central Florida. Enabling legislation allows CFX to incorporate multimodal corridors and intermodal facilities within its right-of-way that anticipate mobility as a service.



*CFX Completes Wekiva Parkway
Sections Ahead of Schedule*

QUESTIONS