

Florida Transportation Plan

Update

presented to
Central Florida MPO
Alliance

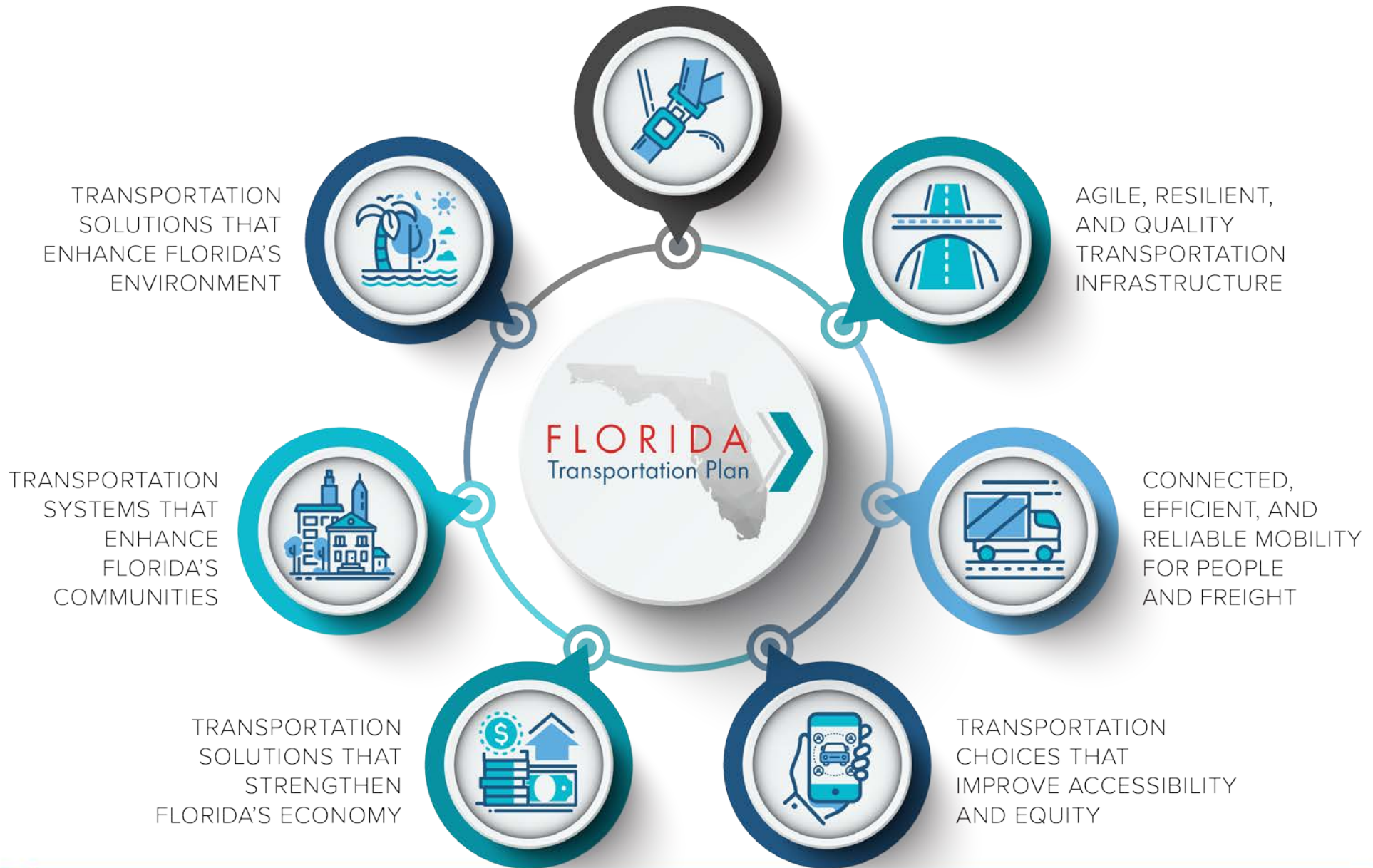
presented by
Alison Stettner
FDOT Office of Policy Planning

January 10, 2019




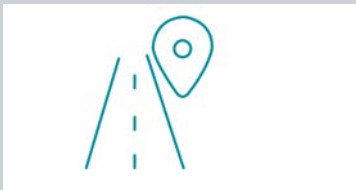
FLORIDA
Transportation Plan

Your Florida. Your vision. Your plan.

SAFETY AND SECURITY FOR
RESIDENTS, VISITORS AND BUSINESSES



Cross-cutting Topics

Technology	Resilience	State/Interregional	Regional/Local
<ul style="list-style-type: none"> Automated, connected, electric, and shared vehicles Transportation system management and operations Big data New materials and processes 	<ul style="list-style-type: none"> Extreme weather Emergency evacuation and response Sea level rise Flooding Economic and societal changes 	<ul style="list-style-type: none"> SIS, including modal facilities Trade & logistics Multi-use/multi-modal facilities Global, statewide, and interregional connectivity Florida's economic drivers and industries 	<ul style="list-style-type: none"> Urbanized, non-urbanized, and rural Congestion relief Land use and community planning Regional visions Environment Economic development 

FTP Subcommittees

- Automated, Connected, Electric, Shared (Technology)
 - Broader definition of infrastructure
- Resilience
 - Environmental, weather, economic, operational disruptors
 - Ability to absorb, withstand, and recover from disruptors
- Safety *NEW*
 - Highlights importance of safety and identify new strategies
 - Supports Strategic Highway Safety Plan update and identification of emphasis areas
 - Includes Florida Police Chiefs, Florida Sheriffs' Association, and FACERS, as well as FTP Steering Committee representatives
- Visit www.floridatransportationplan.com to become a friend of a subcommittee

Get Involved!

Questions?

DANA REIDING

Office of Policy Planning
Florida Department of Transportation
dana.reiding@dot.state.fl.us
850-414-4719

www.floridatransportationplan.com