

2050 Metropolitan Transportation Plan Technical Workshop

April 10, 2025

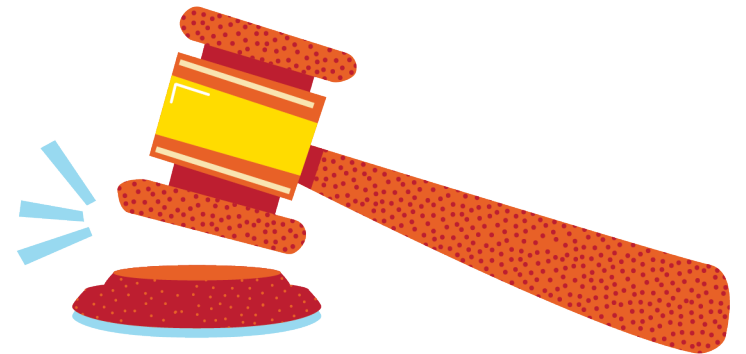


Welcome!

Federal Highway Administration East Central
Florida Regional Planning Council Central
Florida Regional Transportation Authority/LYNX
Orange County Apopka Belle Isle Eatonville
Edgewood Maitland Oakland Ocoee Orlando
Windermere Winter Garden Winter Park SunRail
Greater Orlando Aviation Authority Osceola
County Kissimmee Saint Cloud Kissimmee
Gateway Airport Seminole County Altamonte
Springs Casselberry Lake Mary Longwood Oviedo
Sanford Winter Springs Orlando-Sanford
International Airport Florida Department of
Transportation Florida Turnpike Enterprise
Central Florida Expressway Authority Central
Florida Tourism Oversight District Orange
County Public Schools Osceola County Public
Schools Seminole County Public Schools

AGENDA

- I. General Status Updates
- II. Background: 2050 Planning Process and Funding Feedback to Date
- III. Preliminary Funding Scenarios & Discussion
- IV. Summary of MTP Summit & Feedback
- V. Open Comments
- VI. Public Comments
- VII. Next Steps
- VIII. Adjournment



Status Updates

- FDOT Central Florida Regional Planning Model (CFRPMv8)
- Technical Reports, Recommendations, and Strategies
- 2050 MTP Locally-Funded or Partner-Funded projects lists for planning consistency – Coming Soon
- 2050 MTP Online Dashboard – Coming Soon
 - Interactive dashboard to view transportation project needs and their priority scores



April 9th : Summit in Summary

For those who were unable to attend in person

- Heard from our Board Chairman and Executive Director
- Presentations on:
 - 2050 MTP work and stakeholder feedback to date
 - Illustrative Funding Scenarios
- Small Group/Tabletop Activity: “Making Money Move”
- Report Out and Large Group Discussion





Background:

2050 Planning Process and Funding Feedback to Date

Taylor Laurent, PE, AICP
MetroPlan Orlando

The Journey so far...

2050 MTP Work to Date



Established goals, objectives and performance measures



Incorporated health, housing, and environmental strategies



Assessed existing travel patterns, behavior, and trends



Evaluated regional freight travel



Evaluated future trends and drivers of change



Developed congestion management process/strategies



Initiated public participation efforts



Coordinated closely with local government and operating partners

Setting the Stage



Needs Assessment

Regional transportation issues documented and solutions identified



Project Prioritization

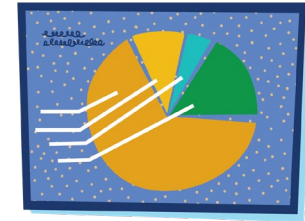
Projects evaluated comparatively using a data informed process



Revenue Forecasts

Reasonably available transportation revenues projected

We Are Here



Funding Policy

Guide to spending the limited funding programmatically



Funding Scenarios

Purpose

- Evaluate how alternative funding allocations change the transportation projects that are funded
- Review tangible comparisons between funding scenarios
- Build consensus on a preferred funding approach



Transportation Funding

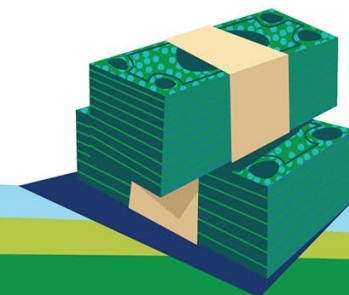
Determining how and what we can plan and implement

Federal

State

Local

Tolls



Transportation Funding

Types of Federal Funds

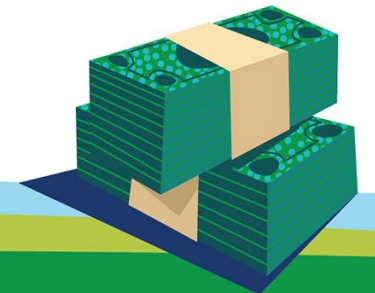
Federal

Federal – State & Non-Urban Attributable Funds

Federal – MPO / Urban Attributable (TMA) Funds*

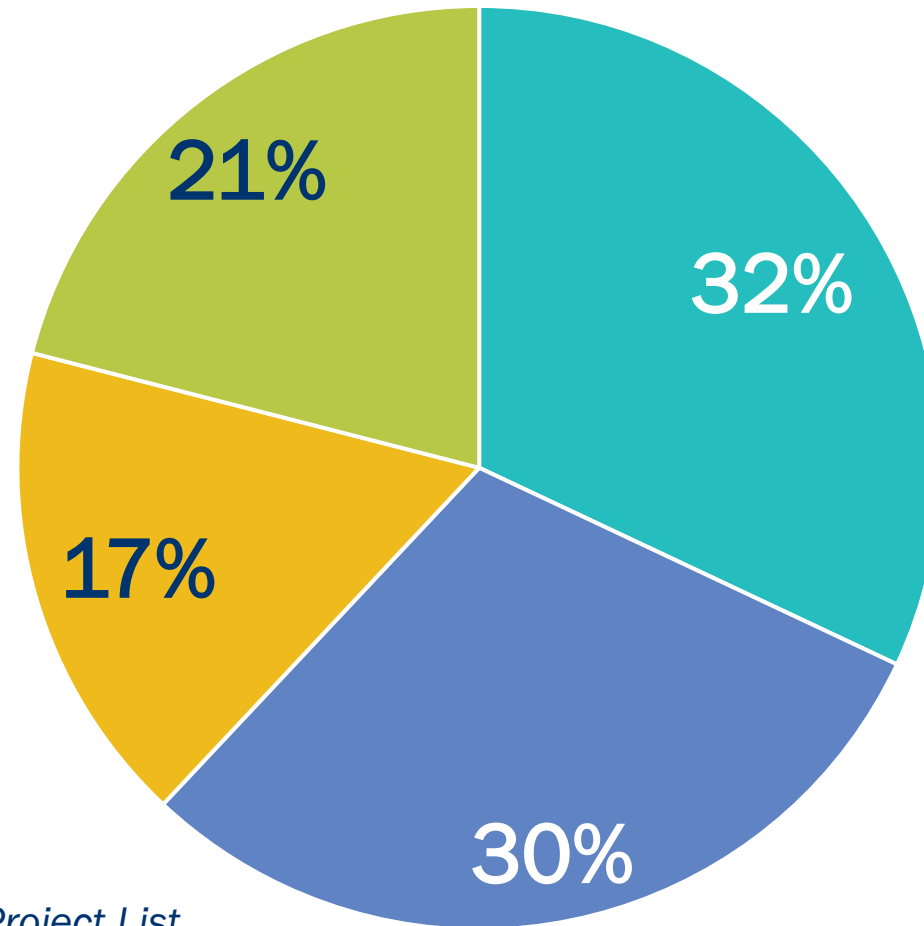
* Prioritized by MetroPlan Orlando and administered via FDOT's Local Agency Program (LAP)

TMA: Transportation Management Area; an urbanized area with a population > 200,000 people.



Current Funding Policy

Federal (STBG) –
MetroPlan Orlando/
Urban Attributable
(TMA) Funds



- Complete Streets
- Eligible Transit Improvements
- Regional Bicycle and Pedestrian Infrastructure
- Systems Management and Operational Solutions

Source: 2045 MTP + Prioritized Project List





Why is this important?

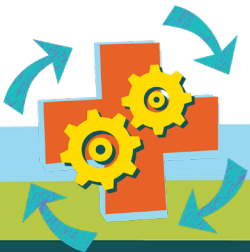
- Funding policy provides structure to the prioritization approach and to annual programming of projects (into the FDOT Work Program)
- Current Approach
 - Allows greater number of projects to be implemented
 - Allows a wider variety of projects to be funded
- Projects flow seamlessly through planning process and maintains planning consistency



2050 MTP Funding Scenarios

MetroPlan Orlando Funds

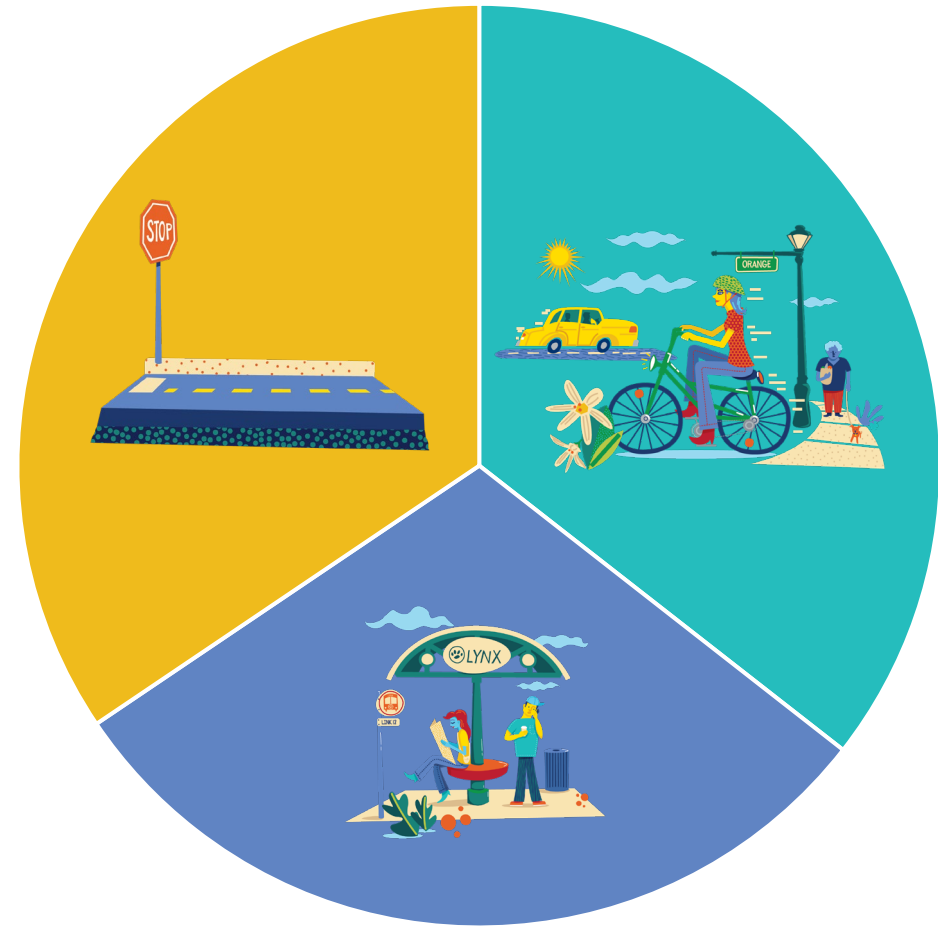
- Modal program categories?
- Funding distribution amongst modal programs?
- Other considerations



2050 MTP Funding Scenarios

MetroPlan Orlando Funds

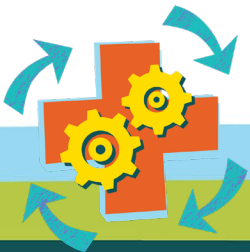
- Modal program categories?
- Funding distribution amongst modal programs?
- Other considerations



2050 MTP Funding Scenarios

MetroPlan Orlando Funds

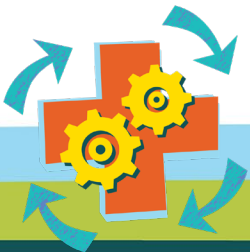
- Modal program categories?
- Funding distribution amongst modal programs?
- Other considerations



2050 MTP Funding Scenarios

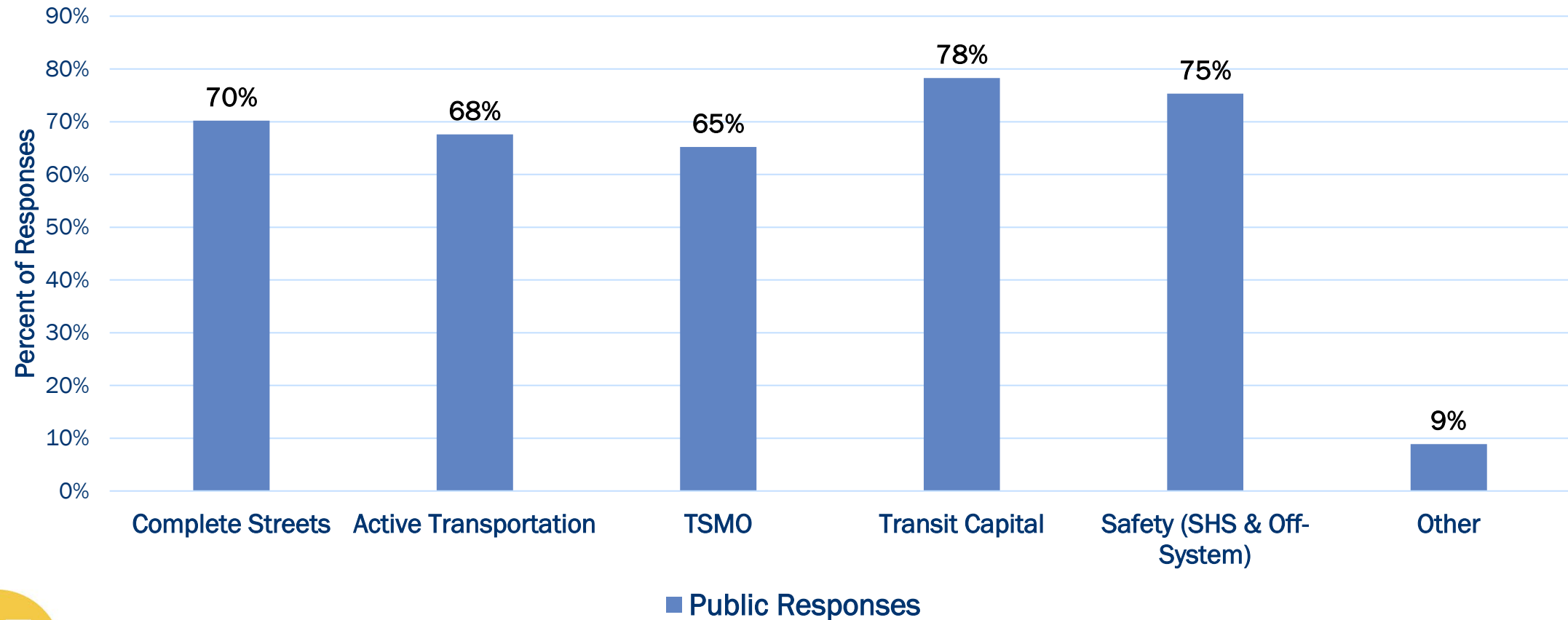
MetroPlan Orlando Funds

- Modal program categories?
- Funding distribution amongst modal programs?
- Other considerations



Public Survey Results

What modal categories would you include?



533 Responses as of 3/31/25



Public & Technical Feedback Results

Public Feedback Themes

- Emphasis on multimodal travel
- Preference for dedicated funding for safety improvements and program
- Desire for additional transit services

Technical Feedback Themes

- Similar focus on multimodal travel
- Emphasized the need for funding for safety projects
- Desire for incorporating more flexibility into the process

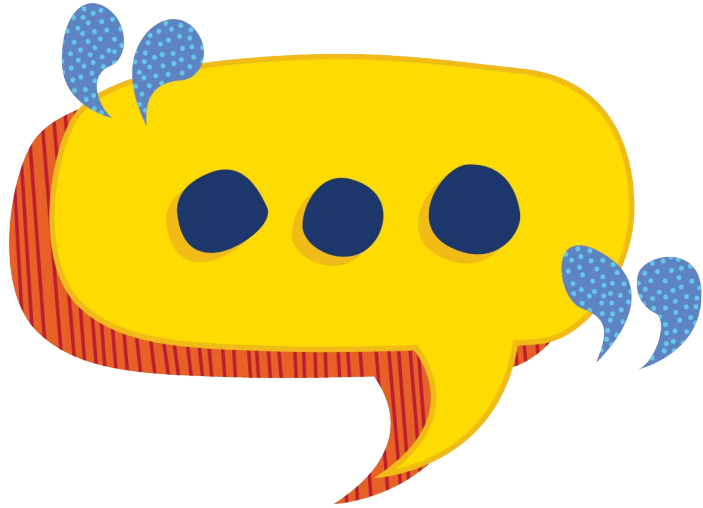


Initial MPO Funding Policy

Initial Public, Technical, and Board Consensus (pre-summit on 4/9/25)

- Continue Modal Program Approach for MPO/TMA Federal Funds (SU, TALU, CARU)
 - Safety, Complete Streets, TSMO/ITS, Bike/Ped Infrastructure, Transit
- Use MPO federal funds to support safety improvements on State Highway System (via 3R/Pavement “goes-with” projects)
- No requirement for local match
- Do not use MPO/TMA federal funds for local agency widening projects
- Consider year of expenditure (inflation) in determining federal funding limit





Any questions so far ?

- Use the “Raise your hand” button
- Type your questions into the “Q&A” box

Preliminary Funding Scenarios

Allison Fluitt, PE, AICP
Kimley-Horn

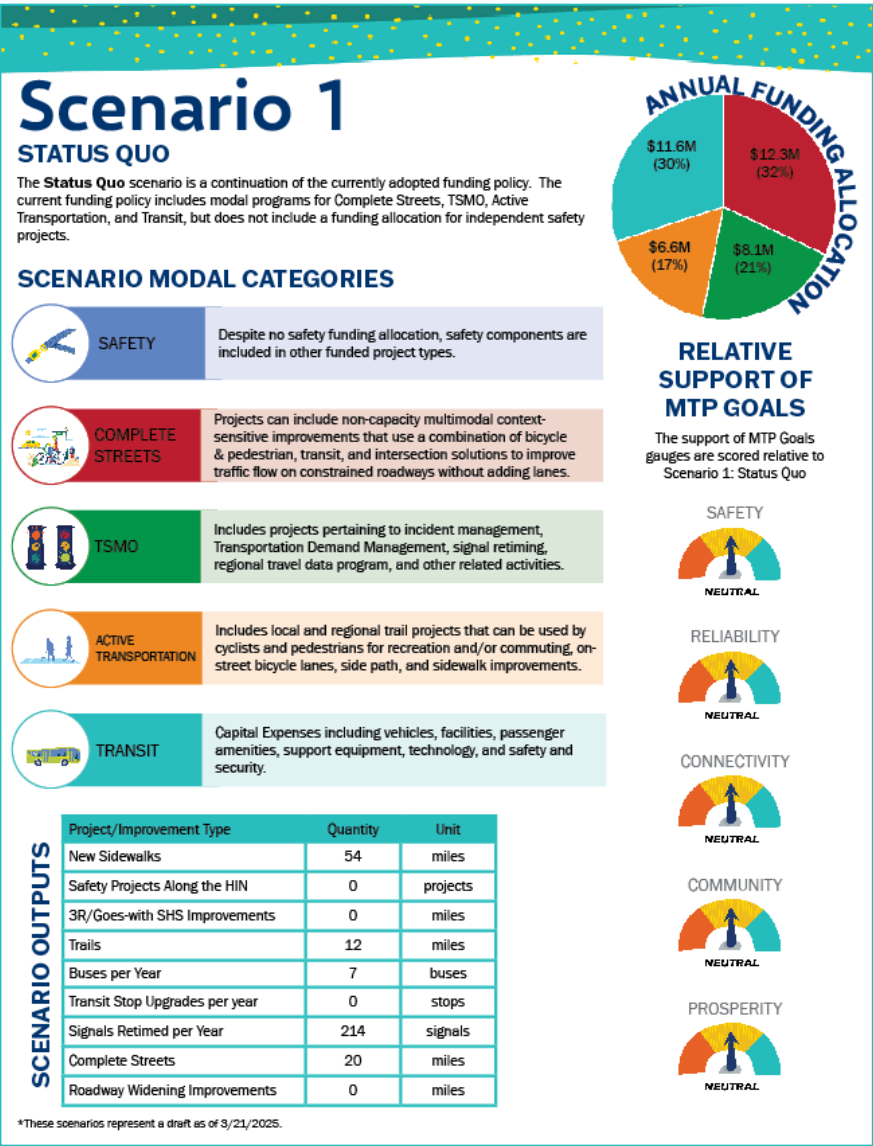


Handouts

Scenario Name
and Definition

Scenario
Modal
Categories

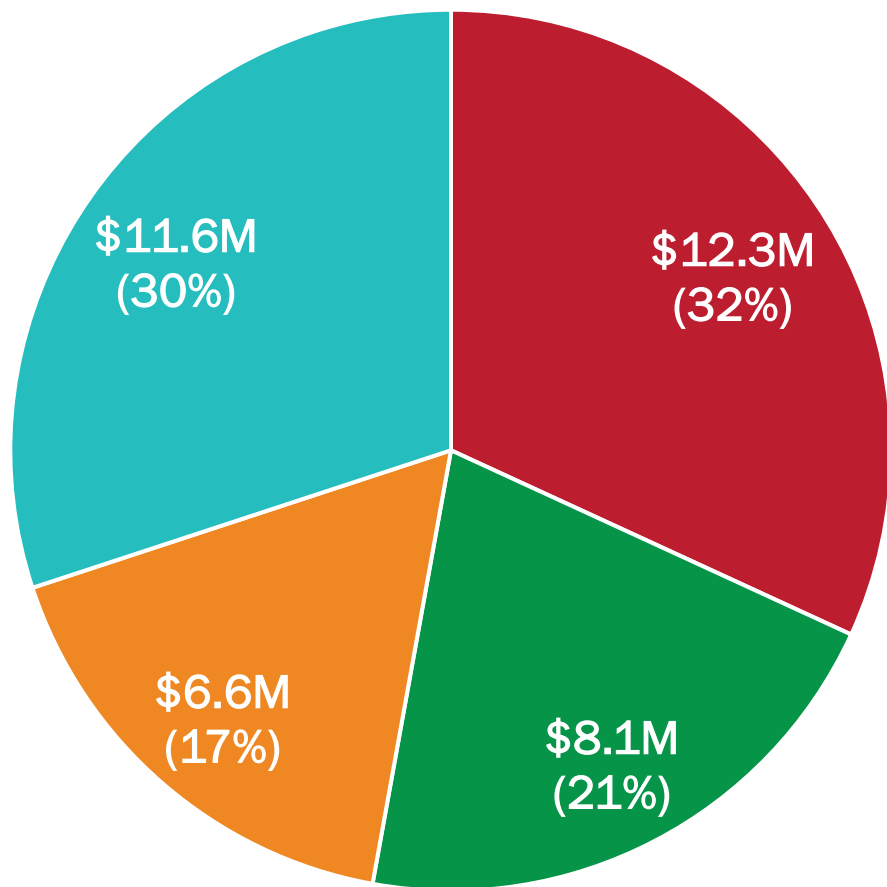
Scenario
Outputs: facts
and figures



Annual
Funding
Allocation:
comparison

Relative
Support of
MTP Goals:
performance

Scenario 1: Status Quo



■ Complete Streets ■ TSMO ■ Active Transportation ■ Transit

Pie chart represents the annual funding allocation

- Represents continuation of the currently adopted funding policy
- Includes modal programs for Complete Streets, TSMO, Active Transportation, and Transit
- Does not include dedicated funding for independent safety projects

Scenario 1 Performance

Status Quo by the Numbers

54



Miles of Sidewalks

7



New Buses a Year *

0



Safety Projects on HIN

0



Miles of SHS Safety Improvements

12



Miles of Trails or Sidepaths

0



New Transit Stops per Year *

74



Miles of TSMO Improvements

9



Intersection Improvements



214

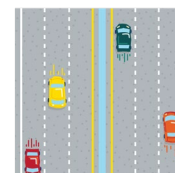
Signals Retimed a Year*

29



Miles of Complete Streets

0



Miles of Roadway Widening

Relative Support of MTP Goals

Safety



NEUTRAL

Reliability



NEUTRAL

Connectivity



NEUTRAL

Community



NEUTRAL

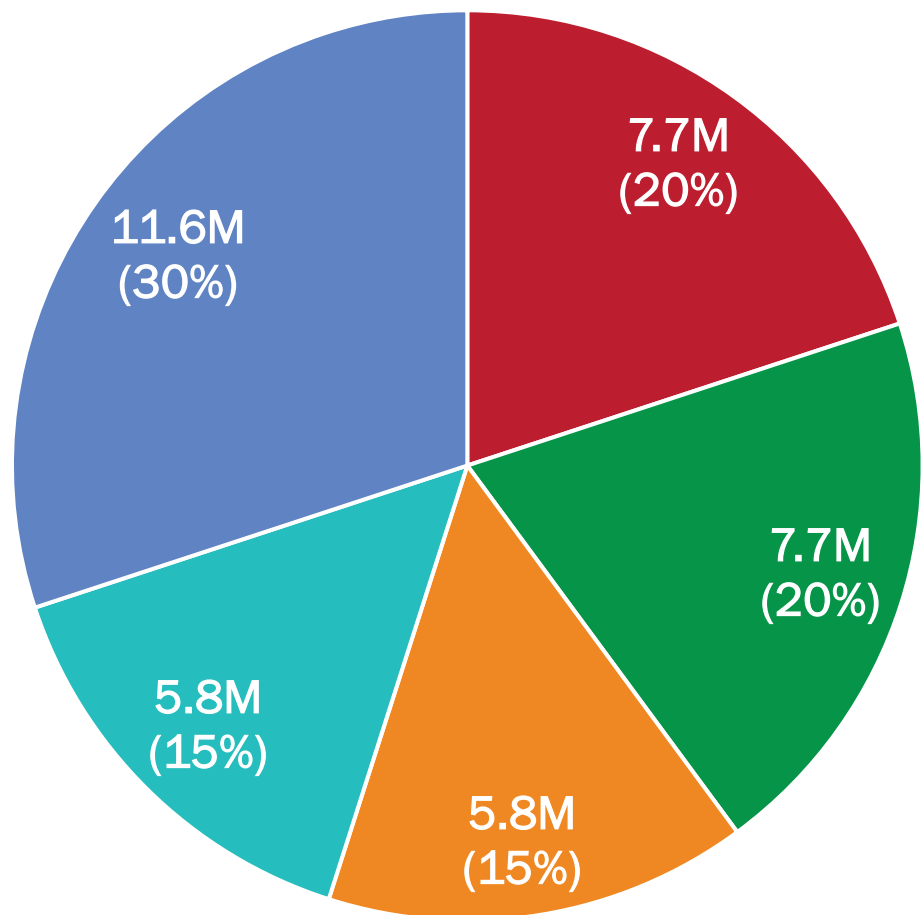
Prosperity



NEUTRAL

* Indicates an annual summary of project improvements. All others are improvements completed over the life of the plan.

Scenario 2: Safety Emphasis



■ Complete Streets ■ TSMO ■ Active Transportation ■ Transit ■ Safety

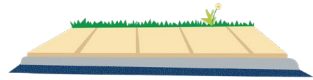
Pie chart represents the annual funding allocation

- Includes funding allocation for independent safety projects
- Increases funding for TSMO
- Reduces funding for Active Transportation and Transit

Scenario 2 Performance

Safety Emphasis by the Numbers

54



Miles of Sidewalks

0



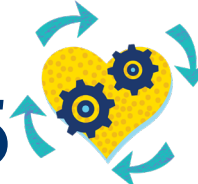
New Buses a Year *

23



Safety Projects on HIN

55



Miles of SHS Safety Improvements

8



Miles of Trails or Sidepaths

58



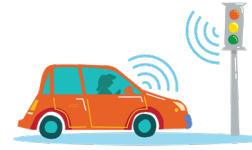
New Transit Stops per Year *

75



Miles of TSMO Improvements

9



Intersection Improvements



143

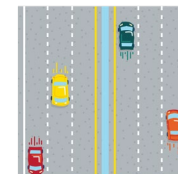
Signals Retimed a Year*

16



Miles of Complete Streets

0



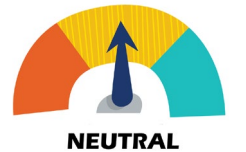
Miles of Roadway Widening

Relative Support of MTP Goals Compared to Status Quo

Safety



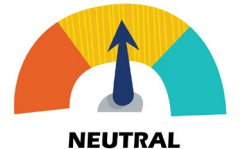
Reliability



Connectivity



Community

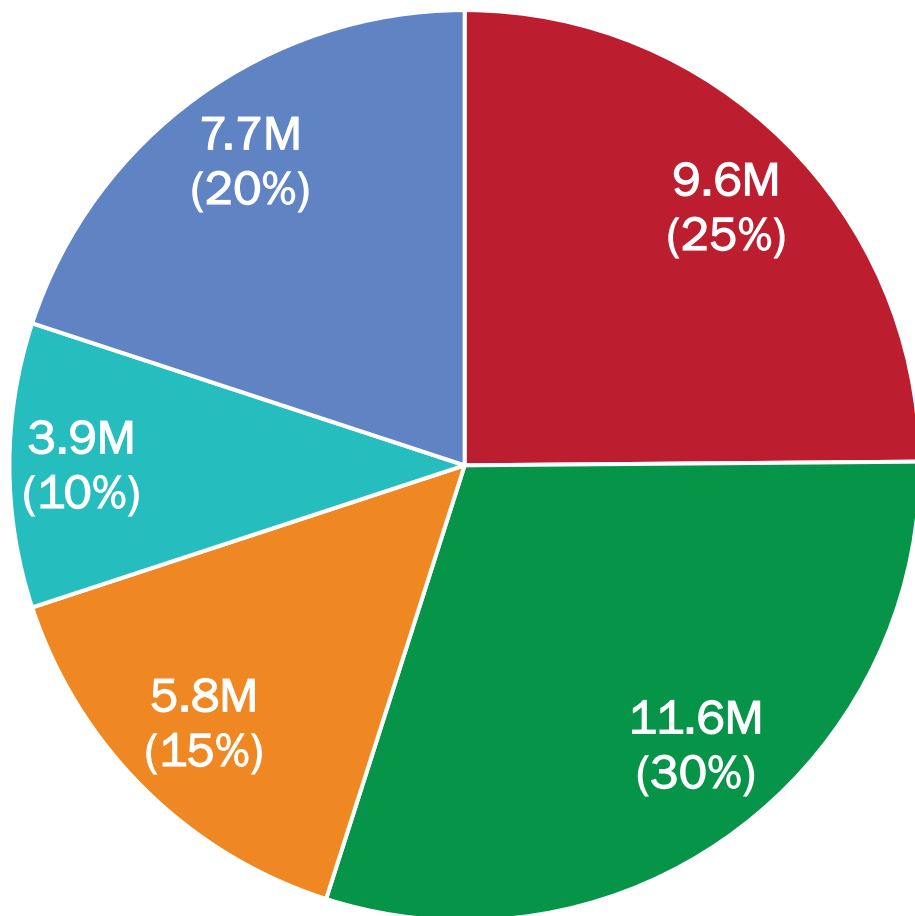


Prosperity



* Indicates an annual summary of project improvements. All others are improvements completed over the life of the plan.

Scenario 3: TSMO Emphasis



■ Complete Streets ■ TSMO ■ Active Transportation ■ Transit ■ Safety

Pie chart represents the annual funding allocation

- Increases funding for TSMO capital projects
- Includes annual set-asides for traffic signal retiming program and regional travel data program
- Includes funding allocation for independent safety projects
- Reduces funding for Complete Streets, Active Transportation, and Transit capital projects

Scenario 3 Performance

TSMO Emphasis by the Numbers

27



Miles of Sidewalks

0



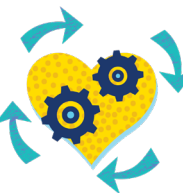
New Buses a Year *

15



Safety Projects on HIN

34



Miles of SHS Safety Improvements

21



Miles of Trails or Sidepaths

38



New Transit Stops per Year *

140



Miles of TSMO Improvements

10



Intersection Improvements



214

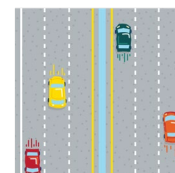
Signals Retimed a Year*

22



Miles of Complete Streets

0



Miles of Roadway Widening

Relative Support of MTP Goals Compared to Status Quo

Safety



Reliability



Connectivity



Community

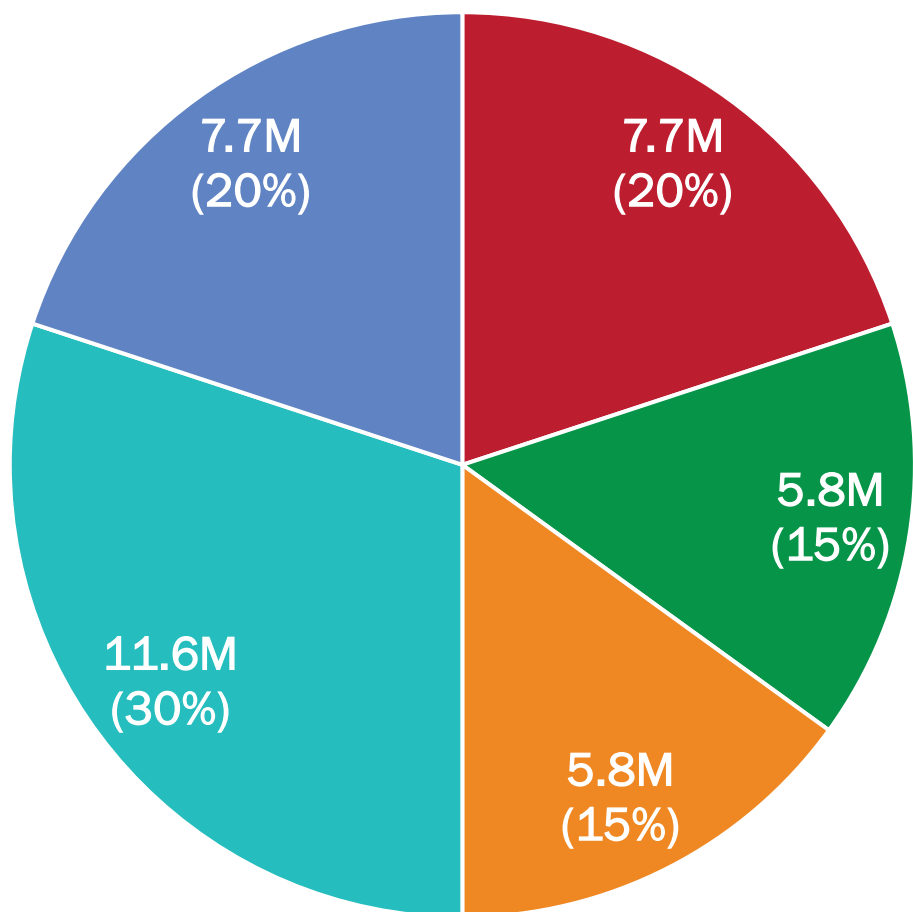


Prosperity



* Indicates an annual summary of project improvements. All others are improvements completed over the life of the plan.

Scenario 4: Transit Emphasis



■ Complete Streets ■ TSMO ■ Active Transportation ■ Transit ■ Safety

Pie chart represents the annual funding allocation

- Includes annual set-aside for transit capital improvements
- Includes dedicated set-aside for transit stop and shelter enhancements
- Includes funding allocation for independent safety projects
- Reduces funding for Complete Streets, Active Transportation, and TSMO projects

Scenario 4 Performance

Transit Emphasis by the Numbers

54



Miles of Sidewalks

4



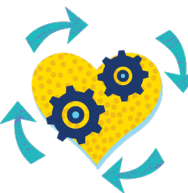
New Buses a Year *

11



Safety Projects on HIN

52



Miles of SHS Safety Improvements

12



Miles of Trails or Sidepaths

38



New Transit Stops per Year *

25



Miles of TSMO Improvements

7



Intersection Improvements



214

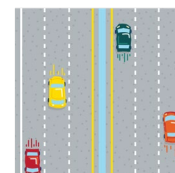
Signals Retimed a Year*

18



Miles of Complete Streets

0



Miles of Roadway Widening

Relative Support of MTP Goals Compared to Status Quo

Safety



Reliability



Connectivity



Community

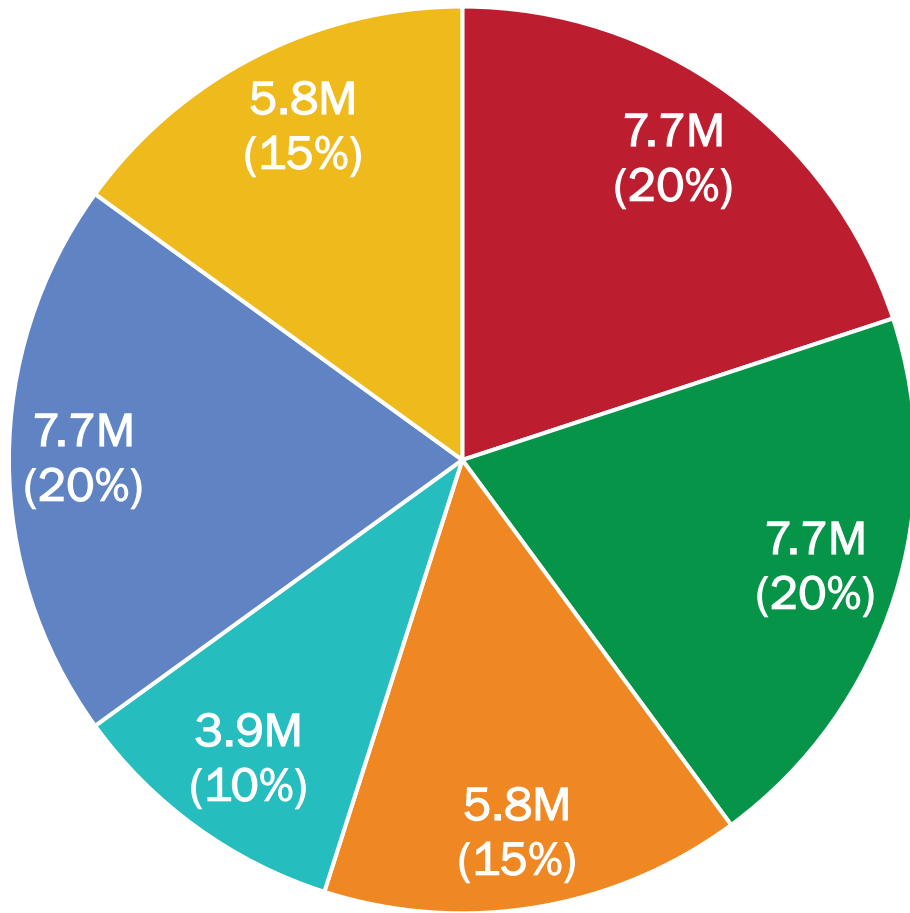


Prosperity



* Indicates an annual summary of project improvements. All others are improvements completed over the life of the plan.

Scenario 5: Restrictive Project Types



■ Complete Streets ■ TSMO ■ Active Transportation ■ Transit ■ Safety ■ Widening

Pie chart represents the annual funding allocation

- Includes funding to support construction for roadway widening projects
- Limits Active Transportation to only trail projects
- Limits Transit to only stop and shelter enhancements
- Includes funding allocation for independent safety projects
- Reduces funding for Complete Streets, Active Transportation, TSMO, and Transit

Scenario 5 Performance

Restrictive Project Types by the Numbers

0
Miles of Sidewalks

0
New Buses a Year *

15
Safety Projects on HIN

35
Miles of SHS Safety Improvements

25
Miles of Trails or Sidepaths

38
New Transit Stops per Year *

72
Miles of TSMO Improvements

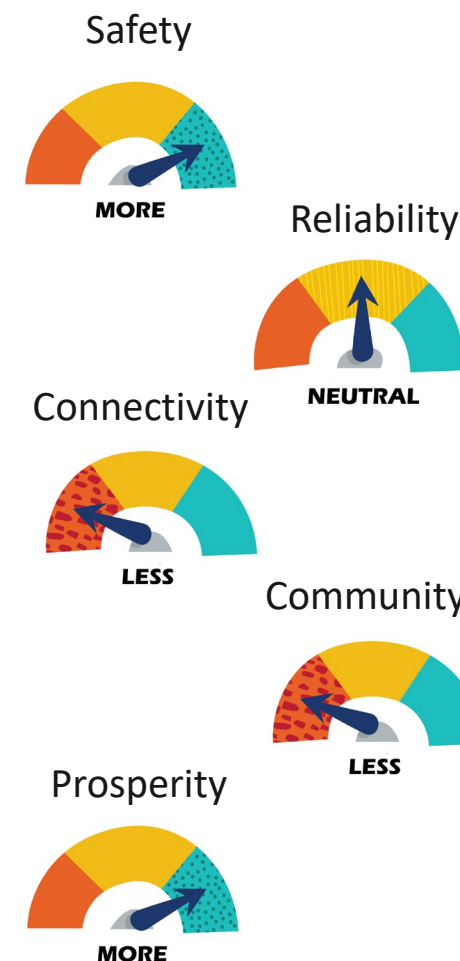
8
Intersection Improvements

214
Signals Retimed a Year*

18
Miles of Complete Streets

6
Miles of Roadway Widening

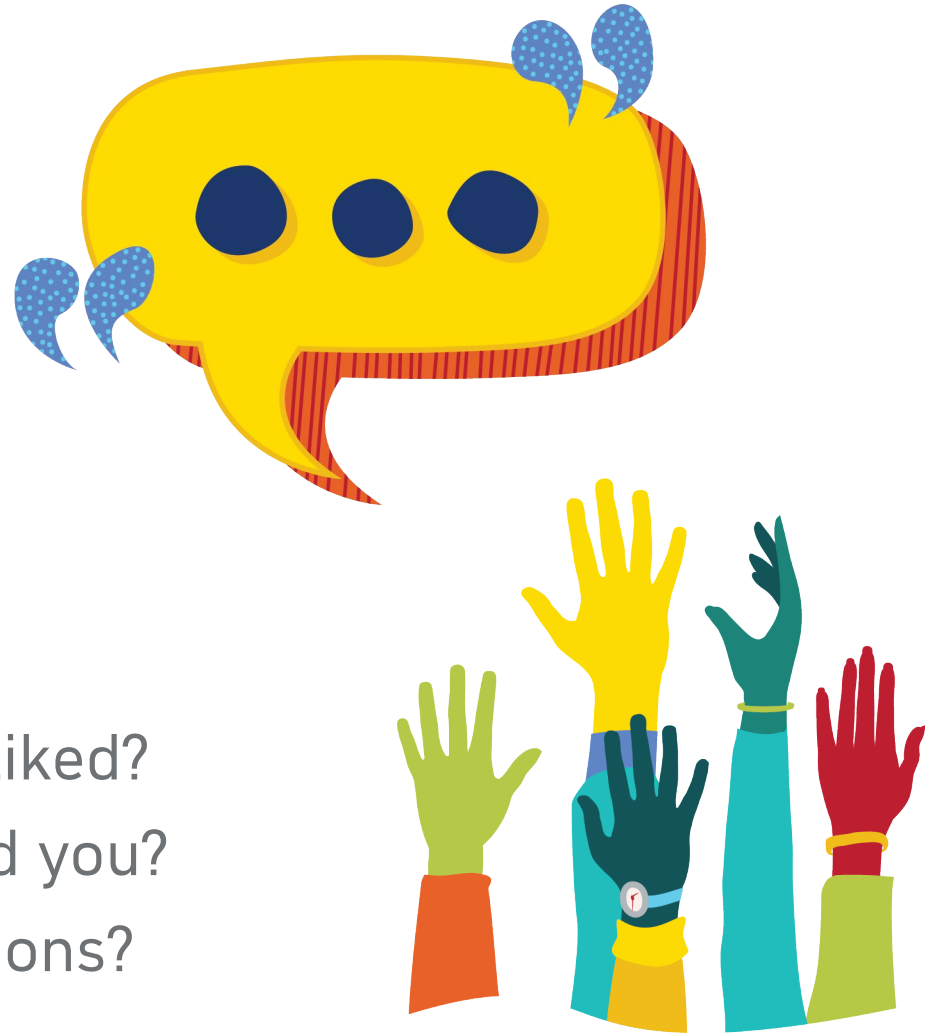
Relative Support of MTP Goals Compared to Status Quo



* Indicates an annual summary of project improvements. All others are improvements completed over the life of the plan.

Initial questions or thoughts on the illustrative scenarios?

- What are your reactions?
- Was there something you liked/disliked?
- Was there something that surprised you?
- Do you have any preliminary questions?



Use the “Raise your hand” button or type your feedback into the “Q&A” box

2050 MTP Summit: Preliminary Feedback

Alex Trauger,
MetroPlan Orlando



Small Group Activity

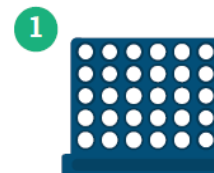
A Resource Allocation Exercise

Making Money Move

Small Group Activity
20-25 Minutes



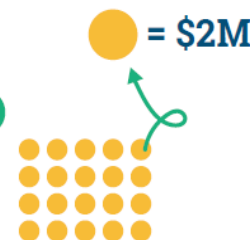
PIECES



Grid Game Board

Each column is labeled with modal categories.

2



20 Tokens

Each token represents \$2,000,000 (5%) of MPO funds.

HOW TO PLAY

AS A GROUP

Choose where to allocate the 20 “funding” tokens by dropping the tokens into the labeled columns.

- You can allocate as many tokens as you wish to any category. If your group decides to allocate more tokens than there are slots, stack the additional tokens below the column.
- On the right side of your grid, you will also see two “Player’s Choice” columns. Decide with your team if there are any additional modal categories you think should be included and label these two extra columns accordingly. If not, you can leave these columns blank.



Every group's finalized answers will be collected and compiled into an Activity Report-Out, which participants will get to view as a PowerPoint presentation.

Preliminary Synthesis

Common Threads: All Groups

- Balanced approach with multimodal emphasis
- Desire for additional flexibility in planning process
 - Widening
 - Transportation disadvantaged
 - New facilities for future development
 - Public education
 - Technology (with TSMO focus)

●	●			●		
●	●	●		●	○	
●	●	●	●	●	○	
●	●	●	●	●	○	
Safety	Complete Streets	TSMO	Active Transportation	Transit Capital	Player's Choice	----



Preliminary Synthesis

Exploring the Player's Choice (Other) Ideas

- Transportation Disadvantaged
- Technology (with TSMO focus)
- Future-Ready / Innovation
- Widening
- New Corridor Opportunities
- New Rail Opportunities
- Public Education
- “Leverage” Fund

○	○			○		
○	○	○		○	●	
○	○	○	○	○	●	
○	○	○	○	○	●	
Safety	Complete Streets	TSMO	Active Transportation	Transit Capital	Player's Choice	----



Transportation Disadvantaged

“Players Choice” Topic (4/9/25)

Fund improvements for aging, vision, and hearing-impaired travelers; and improve access to transit.

What do you think?

Use the “Raise your hand” button or type your comment into the “Chat” box.



Future Ready / Innovation

“Players Choice” Topic (4/9/25)

Focus funding on future-readiness and prepare for the next generation of transportation mobility (e.g. urban air mobility, drone delivery, electric, connected, autonomous vehicles, etc.)



What do you think?
Use the “Raise your hand” button or type your comment into the “Chat” box.

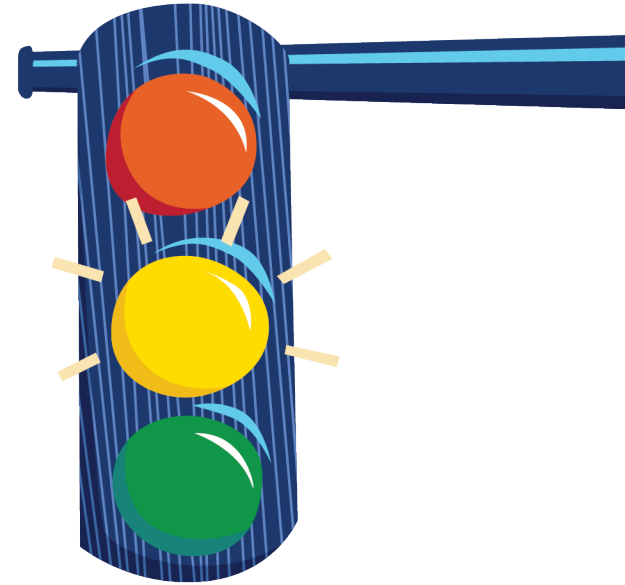
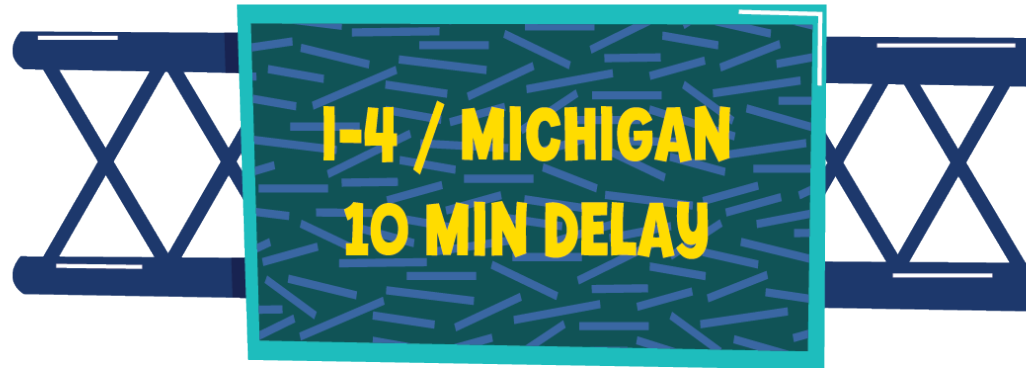


Technology (TSM&O w/ ITS emphasis)

“Players Choice” Topic (4/9/25)

Focus funding on technological solutions for transportation.

What do you think?
Use the “Raise your hand”
button or type your comment
into the “Chat” box.



Widening + New Corridor Projects

“Players Choice” Topic (4/9/25)



Include funding for roadway widening projects or “Complete Streets” projects that include a widening component; and for new corridor construction in high future growth areas.

What do you think?

Use the “Raise your hand” button or type your comment into the “Chat” box.



New Rail Opportunities

“Players Choice” Topic (4/9/25)

Include funding for rail connectivity expansions;
to support capital-related improvements.

What do you think?
Use the “Raise your hand”
button or type your comment
into the “Chat” box.



Public Education

“Players Choice” Topic (4/9/25)

Increase public education related to the various transportation mobility options in our region; and encourage multimodal travel by improving knowledge of and comfort with other modes of transportation.



What do you think?

Use the “Raise your hand” button or type your comment into the “Chat” box.



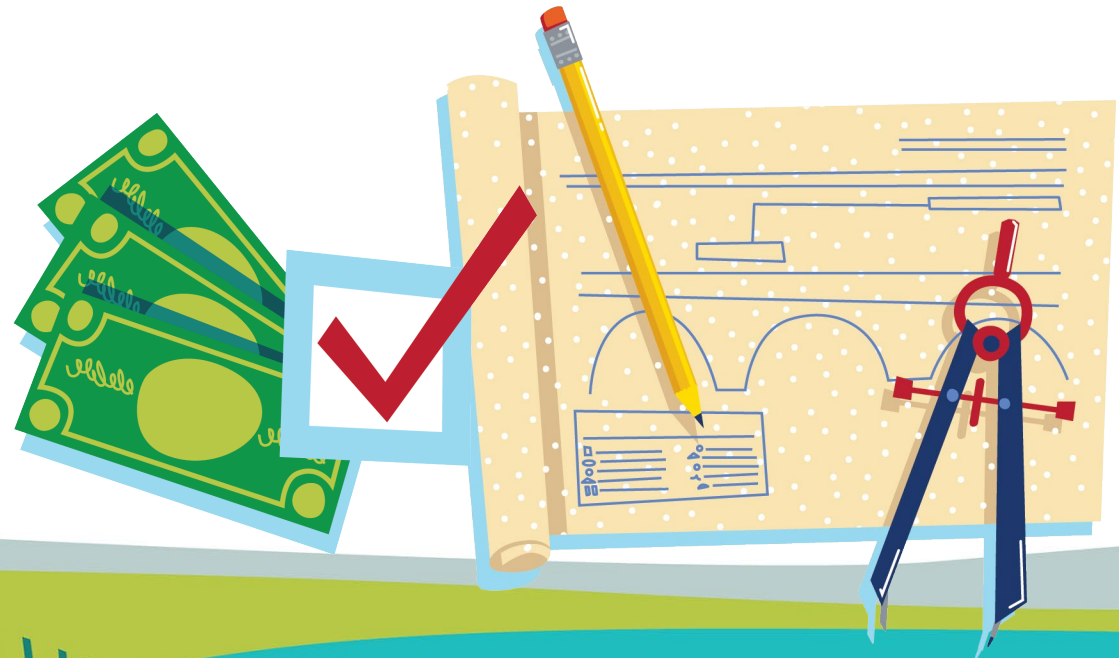
“Leverage” Funding Opportunities

“Players Choice” Topic (4/9/25)

Increase flexibility of federal funding programming process;
a set aside funding program with “local match” requirements.

What do you think?

Use the “Raise your hand”
button or type your comment
into the “Chat” box.



Any questions / final thoughts on funding policy topics covered today?

- Use the “Raise your hand” button
- Type your questions into the “Q&A” box



Next Steps

- MTP Team to develop proposed actions to revise the funding scenarios
 - To be presented at the April/May Board and Advisory Committee Meetings for consensus prior to implementation
- 2050 MTP Locally-Funded or Partner-Funded projects lists for planning consistency – Coming Soon
- 2050 MTP Online Dashboard – Coming Soon
 - Interactive dashboard to view transportation project needs and their priority scores





2050 MTP Schedule

	2024				2025			
	Jan - Mar	Apr - Jun	Jul - Sep	Oct - Dec	Jan - Mar	Apr - Jun	Jul - Sep	Oct - Dec
Goals, Objectives, Measures								
Trends, Conditions, Uncertainties								
Multimodal Needs Assessments								
Funding Scenarios								
Develop Cost Feasible Plan								
Seek Board Adoption								Must be adopted by Dec 2025
Agency / Public Participation								

Open Comment

- Use the “Raise your hand” button
- Type your questions into the “Q&A” box



How to Make a Public Comment

Verbal Comments

Use “Raise Hand” feature (Or dial *9 if on the phone)

Written Comments

Type in the “Q&A” box

Email MTP@MetroPlanOrlando.gov

After you are recognized, state your name and organization/address and give your comment within two minutes.



Upcoming Meetings

2050 MTP Technical Workshop #9

June 12, 2025
2:00pm
Virtual

2050 MTP Technical Workshop #10

August 14, 2025
2:00pm
Virtual





Thank you!

MetroPlanOrlando.gov/2050 | 407-481-5672

MTP@MetroPlanOrlando.gov

