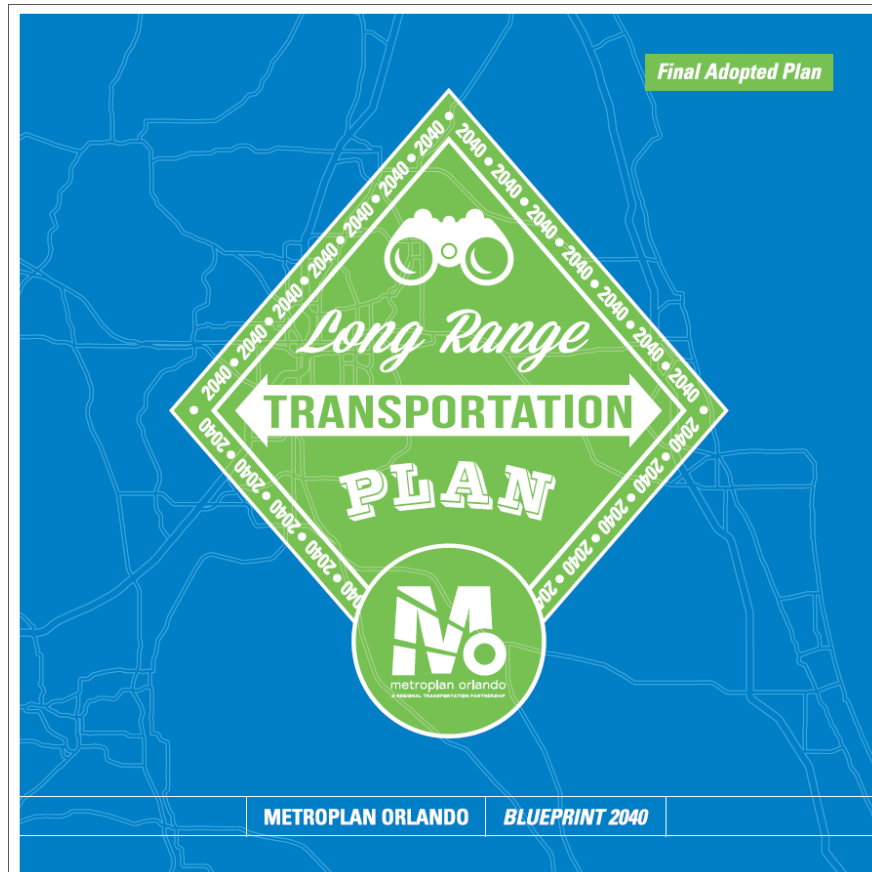


2040 Long Range Transportation Plan Proposed Amendment May 2017



How to Submit a Comment

The MetroPlan Orlando Board will consider the proposed amendment(s) during its meeting on May 10, 2017. Parties can submit written comments to MetroPlan Orlando, 250 S Orange Avenue, Ste. 200, Orlando, FL 32801 or by emailing LRTP@metroplanorlando.org. The deadline to submit comments is May 9, 2017.

Accommodations

In accordance with the Americans with Disabilities Act (ADA), if any person with a disability defined by the ADA needs special accommodations to participate, he or she should contact MetroPlan Orlando at least three business days prior to a proceeding. Persons who require alternative language services, which are provided at no cost, should contact MetroPlan Orlando at least three business days prior to a proceeding. To request accommodations, please contact Ms. Cathy Goldfarb at (407) 481-5672 x315 or email cgoldfarb@metroplanorlando.org.

BACKGROUND INFORMATION

In order to meet federal requirements, the year 2040 Long Range Transportation Plan (LRTP) contains a Cost Feasible Plan and a Needs Plan.

Projects in the Cost Feasible Plan are based on reasonably available funding. In other words, the region expects to complete these projects through funding mechanisms currently in place, already allowed by the state legislature, or needing additional action by the state legislature. The Needs Plan contains unfunded projects deemed important for the development of Central Florida's transportation system.



The Florida's Turnpike Enterprise (FTE) has requested an amendment to MetroPlan Orlando's 2040 Long Range Transportation Plan to add and remove projects from the cost-feasible portion of the 2040 LRTP. Florida's Turnpike Enterprise is funded by toll revenues, so the amendments do not impact any projects currently forecasted to use federal or state funding in the 2040 Long Range Transportation Plan. The amendment includes:

1. **SR 417 – Widen to 8 lanes between Interstate 4 in Seminole County to the Seminole County / Orange County Line [REMOVE PROJECT].** Project has been removed from Cost Feasible Plan and added to the Unfunded Needs plan due to lack of local support.
2. **Florida's Turnpike – Widen to eight (8) lanes between Kissimmee Park Road interchange and US 192 interchange in Osceola County [ADD PROJECT].** Project was an unfunded Need and has been added to Cost Feasible List to coincide with the improvement to the interchange modification in item 4.
3. **Colonial Parkway (SR 504) between SR 408 and SR 520 along the SR 50 corridor [ADD STUDY].**
The Florida Turnpike Enterprise will lead the Project Development & Engineering Study to examine all alternatives along State Road 50 between State Road 408 and State Road 520.
4. **Interchange Modifications [ADD PROJECTS]**
 - a. **Florida Turnpike @ Kissimmee Park Road** – Add Southbound On & Northbound off ramps to create full interchange
 - b. **Florida Turnpike @ Interstate 4** – Interchange modification to improve connectivity between I-4 Ultimate and the Turnpike
 - c. **Florida Turnpike @ SR 528 / US 441** - Interchange modification to improve connectivity between the Turnpike, SR 528 and US 441

Florida Turnpike Enterprise

SR 417 – Remove (now unfunded need)

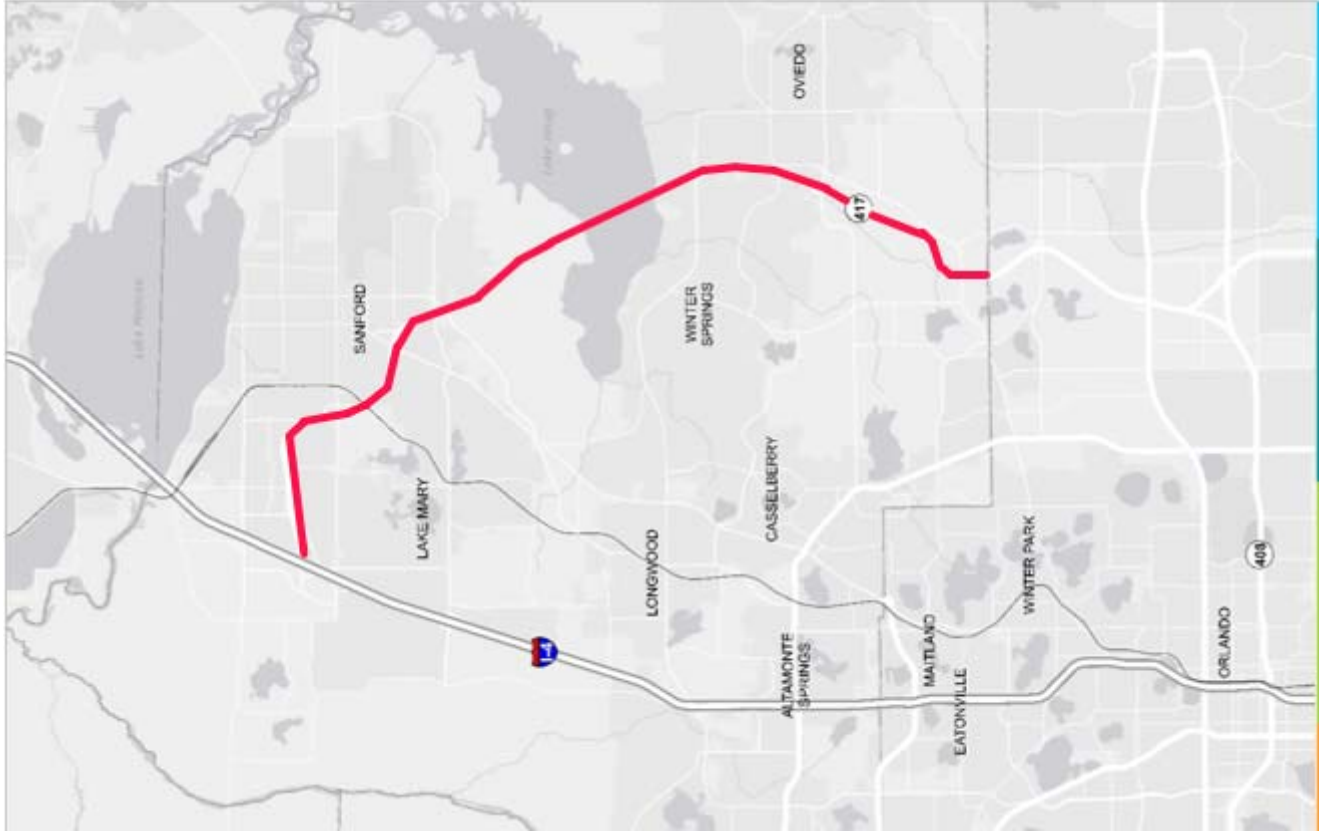
Florida Turnpike – widen to 8 lanes

Colonial Parkway – new corridor PD&E

Interchange Modifications

- Kissimmee Park Road
- Interstate 4
- SR 528/ US 441





SR 417 – Remove (now unfunded need)

Florida Turnpike – widen to 8 lanes

Colonial Parkway – new corridor PD&E

Interchange Modifications

- Kissimmee Park Road
- Interstate 4
- SR 528/ US 441

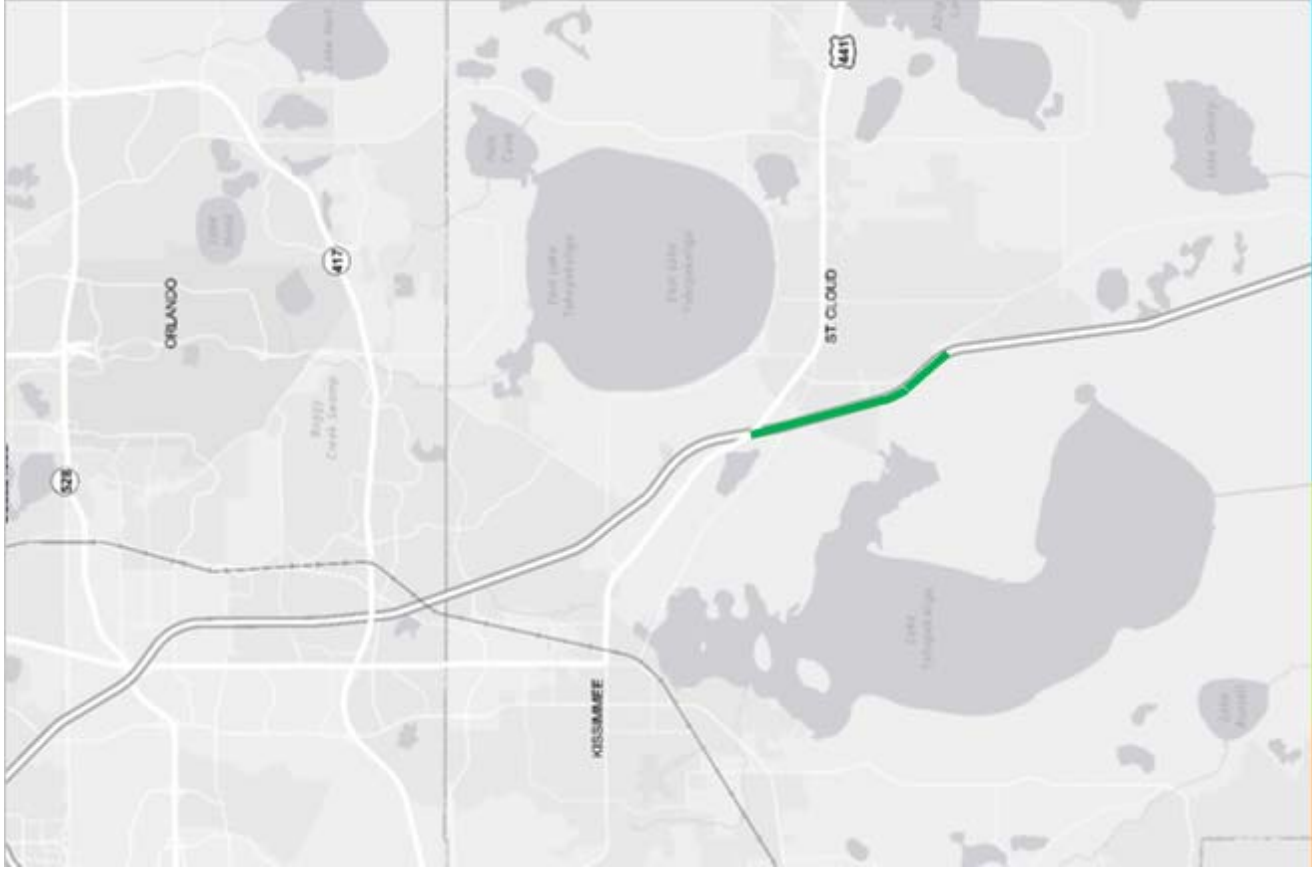
SR 417 – Remove (now unfunded need)

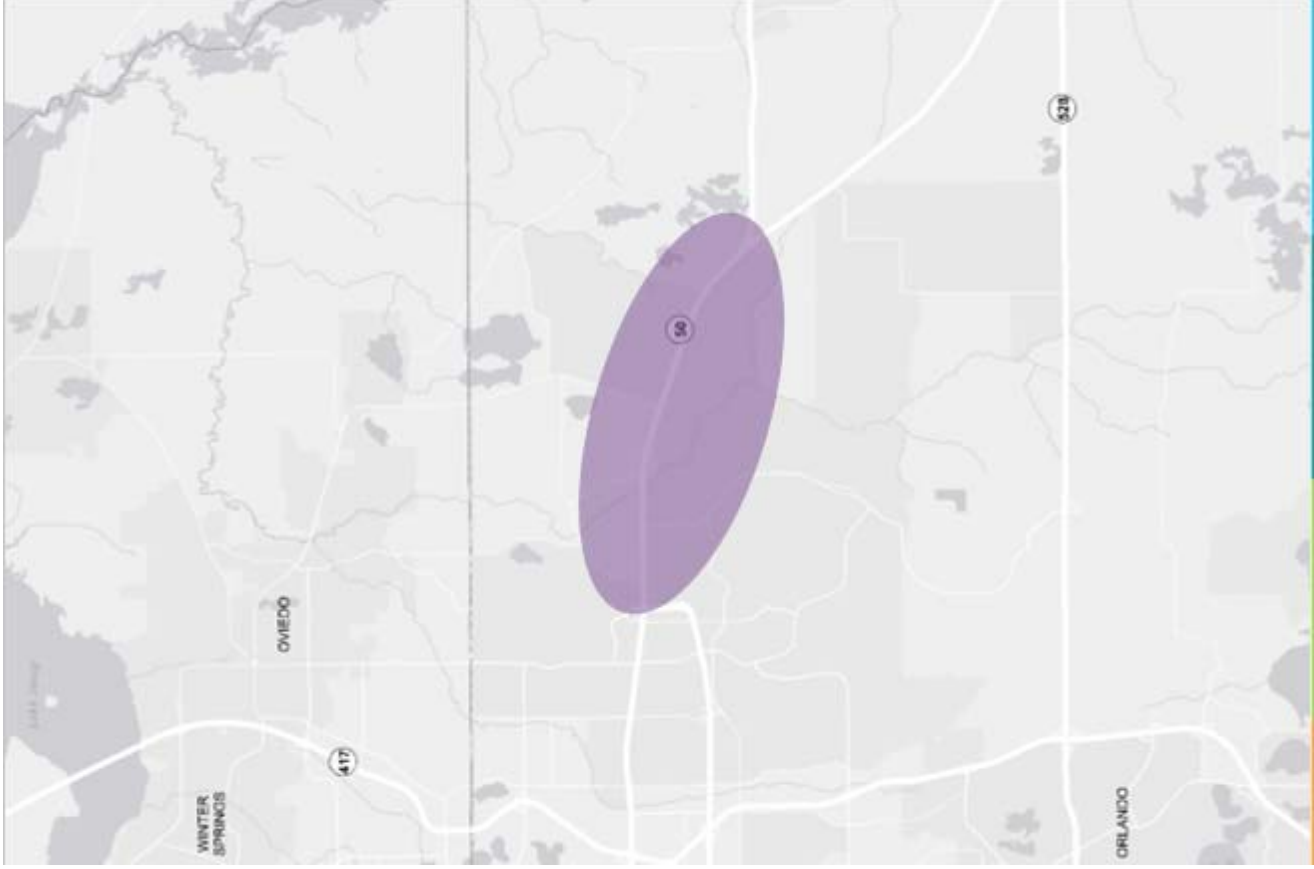
Florida Turnpike – widen to 8 lanes

Colonial Parkway – new corridor PD&E

Interchange Modifications

- Kissimmee Park Road
- Interstate 4
- SR 528/ US 441





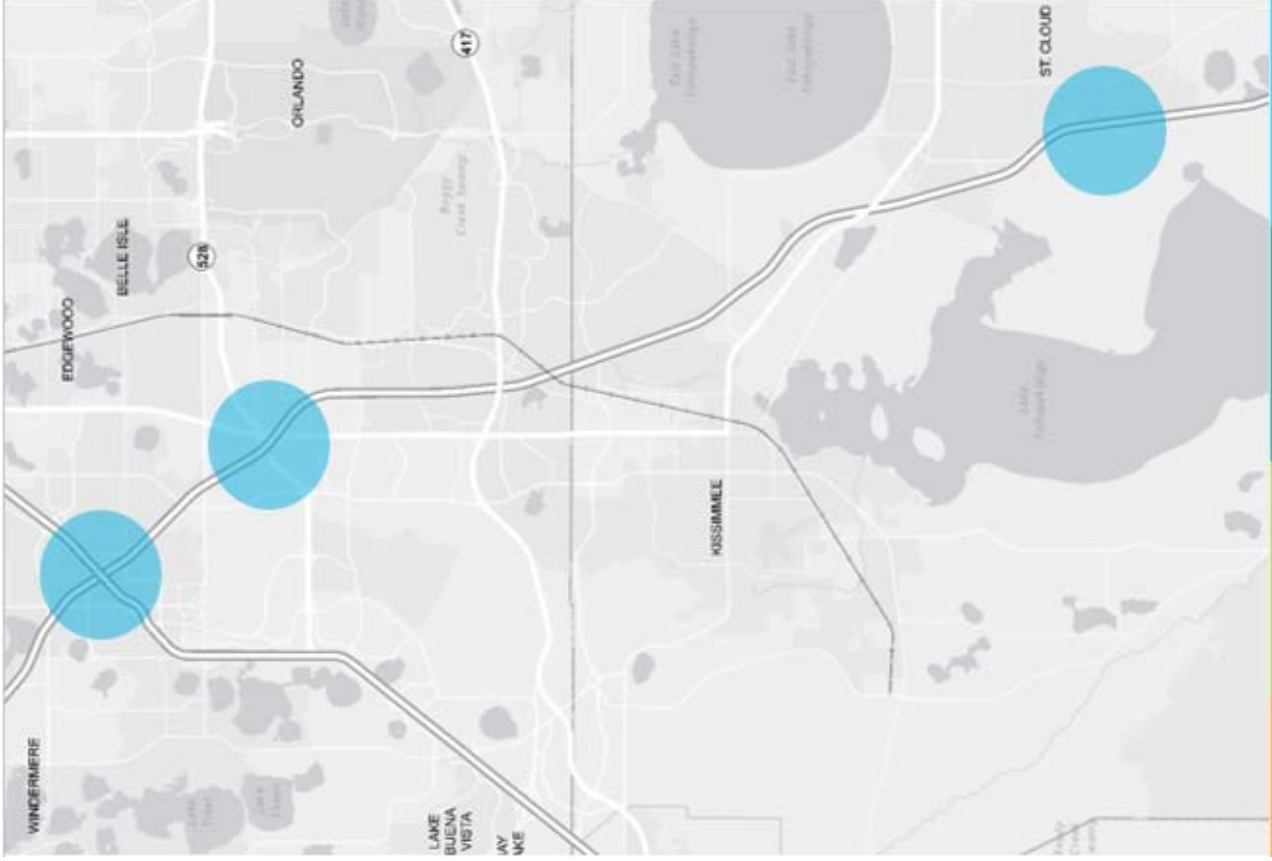
SR 417 - Remove (now unfunded need)

Florida Turnpike - widen to 8 lanes

Colonial Parkway - new corridor PD&E

Interchange Modifications

- Kissimmee Park Road
- Interstate 4
- SR 528/ US 441



SR 417 - Remove (now unfunded need)

Florida Turnpike - widen to 8 lanes

Colonial Parkway - new corridor PD&E

Interchange Modifications

- Kissimmee Park Road
- Interstate 4
- SR 528/ US 441