

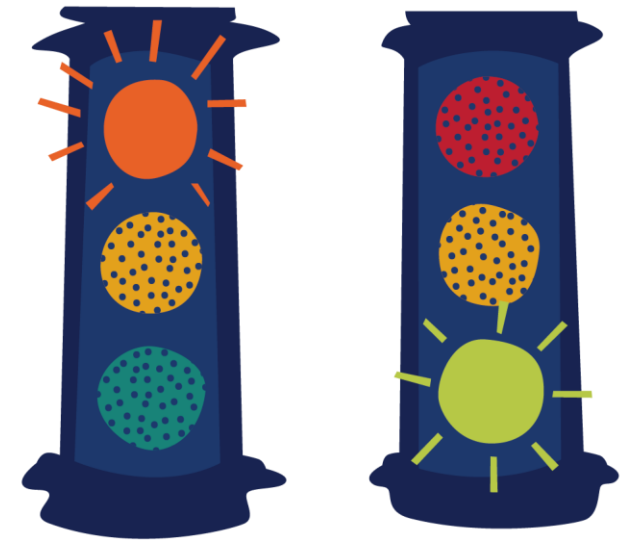
# 2050 Metropolitan Transportation Plan

## Congestion Management Process



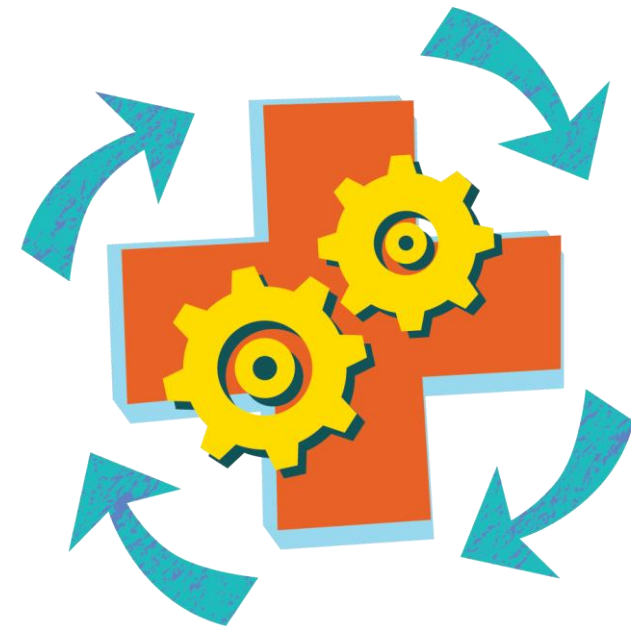
# Defining Terms: Congestion Management

Application of strategies to improve transportation system performance and reliability by reducing the adverse impacts of congestion on the movement of people and goods.



# Defining Terms: Congestion Management Process (CMP)

A method of managing congestion that provides information on transportation system performance.



# History: Congestion Management Guidance

Intermodal Surface  
Transportation  
Efficiency Act (ISTEA)  
required Congestion  
Management System  
(CMS)

1991

2005

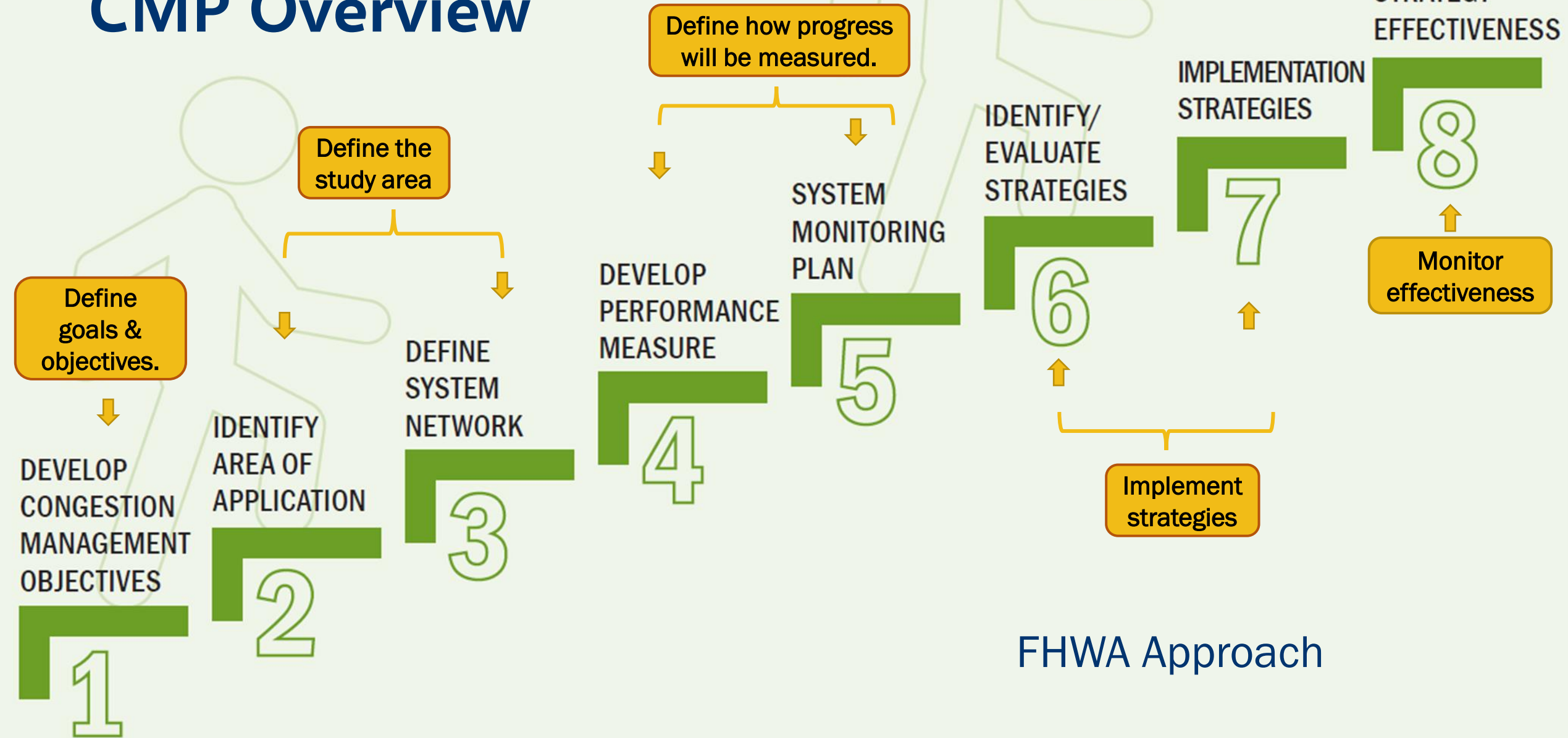
Safe, Accountable, Flexible,  
Efficient Transportation Equity Act:  
A Legacy for Users (SAFETEA-LU),  
replaced with the Congestion  
Management Process (CMP)

FHWA released  
Incorporating Travel-  
Time Reliability into  
the Congestion  
Management Process  
(CMP): A Primer

2015



# CMP Overview



# 2045 CMP Review: Goals

## CMP Goals

1. Safety and Security
2. Reliability & Performance
3. Access & Connectivity
4. Health & Environment
5. Investment & Economy

## 2045 MTP Goals



### Safety & Security

Provide a safe and secure transportation system for all users



### Reliability & Performance

Leverage innovative solutions to optimize system performance



### Access & Connectivity

Enhance communities and lives through improved access to opportunities



### Health & Environment

Protect and preserve our region's public health and environmentally sensitive areas



### Investment & Economy

Support economic prosperity through strategic transportation investment



# 2045 CMP Review: Performance Measures

## Safety and Security

- Fatalities, crashes, and serious injuries for all modes
- Emergency response times
- Incident clearance times

## Reliability and Performance

- % of roadways operating reliably
- Truck travel time reliability
- % system miles monitored
- Vehicle hours of delay
- Transit on-time performance

## Access & Connectivity

- Transit headways
- % of population and jobs near frequent transit
- % population within a 10-minute walk or bike ride to essential services
- % of commutes that are non-SOV

## Health & Environment

- Air quality index

## Invest & Economy

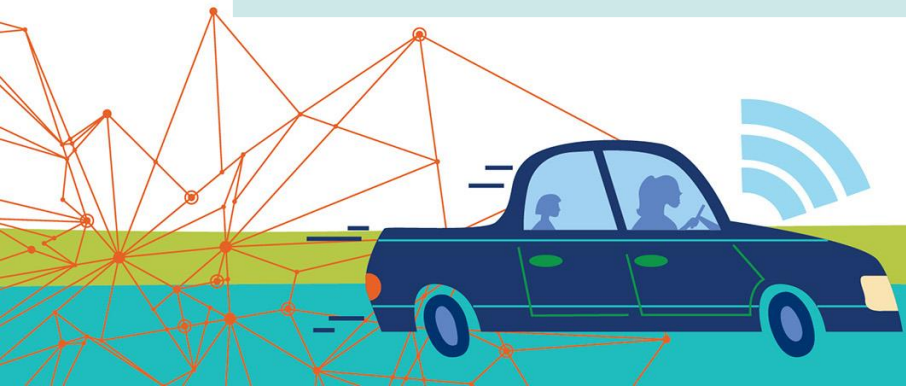
- % of visitor corridors operating reliably

Note: Sample of measures by goal area



# 2045 CMP Review: Strategies

Strategies that improve safety for all users	Strategies that optimize system capacity	Strategies that shift SOV trips to other forms of travel
Expand incident management programs	Introduce ramp metering	Develop TDM strategies
Advance the role of predictive analytics in informing incident management	Expand the actively monitored system	Improve accessibility to essential services
Develop a Vision Zero Action Plan	Develop consistent curb management	Optimize public transportation operations and connectivity



Note: Sample of strategies





# 2050 CMP Update

## 1. Goals & Objectives

- Consistent with 2050 MTP
- Supported by strategies
- Measurable

## 2. Performance Measures

- Adding and removing measures
- Updating targets
- Evaluation and monitoring plan

## 3. Strategies

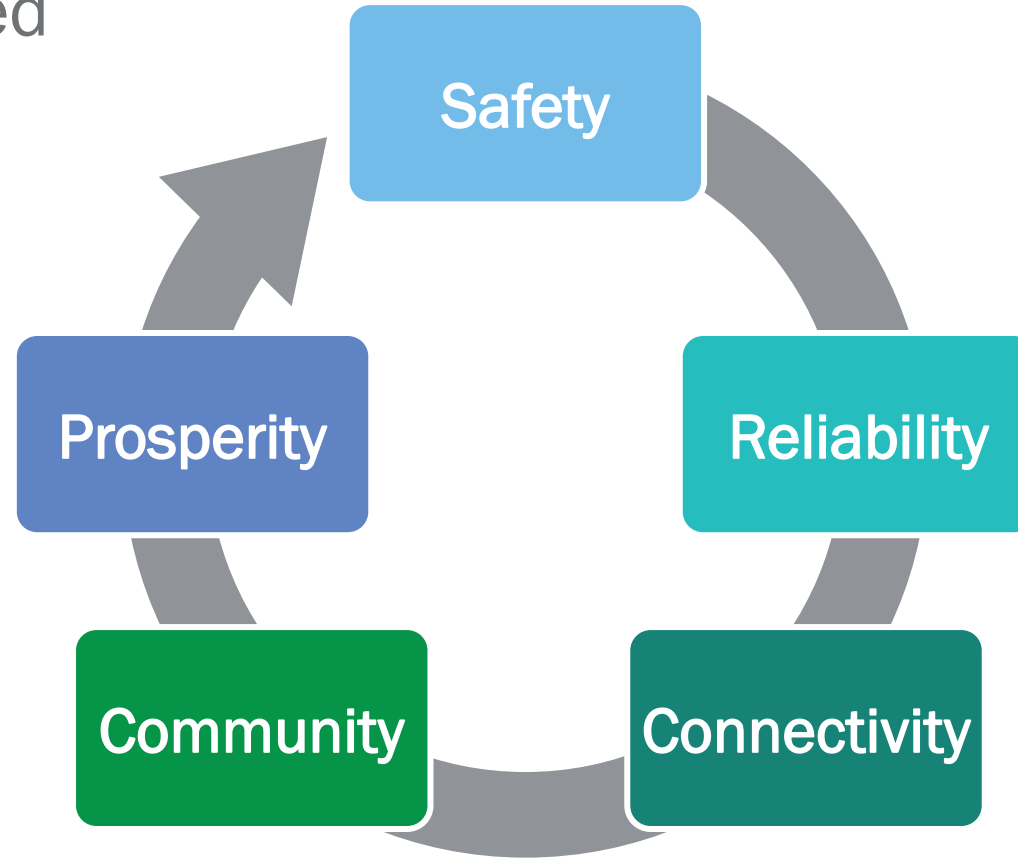
- Catalog implemented strategies
- Determine effectiveness
- Recommend for future/continued deployment or removal

## 4. Scorecard

- Key Measures
- Recurring updates

# 2050 CMP Goals and Objectives

Based on proposed  
2050 MTP Goals



# 2050 CMP Performance Measures

- Changes to approach previous PMs
  - % of jobs within ½ mile of frequent transit – New Data Source
  - Emergency response times (Safety)
  - % visitor corridors with reliable travel times (Prosperity)
- Potential new PMs
  - Delay on visitor corridors (Prosperity)
  - Truck travel time reliability (Prosperity)
- Draft performance targets for 2050 CMP



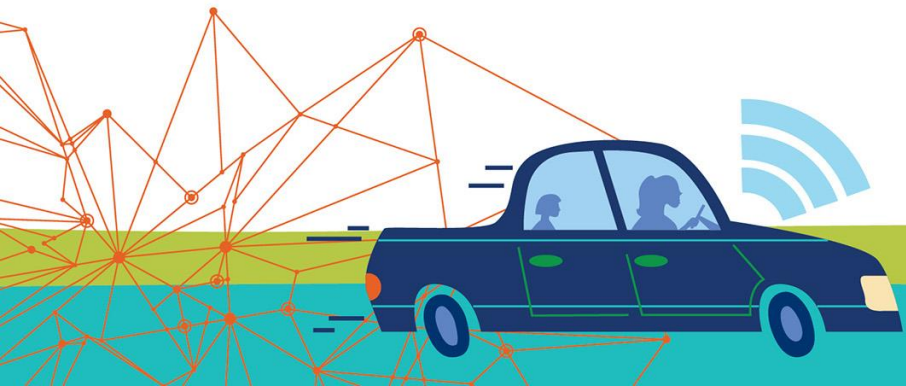
# 2050 CMP Strategies

- Assess which current strategies should continue
- Identify new strategies to align with 2050 Goals & Objectives
  - Review changes to strategies in a Metroplan staff workshop (June/July)
  - Gather broader input from MTP Technical Committee
- Remove strategies that are no longer in alignment



# 2050 CMP Evaluation Monitoring Plan

- Develop a CMP scorecard to highlight the overall performance of the transportation system in Central Florida to support regular reporting to:
  - MetroPlan Orlando Board and Committees
  - The public
- Identify options for reporting out on the effectiveness of specific strategies.



# 2050 CMP Next Steps

---

- Prepare for internal workshop to confirm PMs/targets/strategies: **July 15<sup>th</sup>**
- CMP Metrics & Strategies Overview: **August MTP Technical Workshop**
- Next CMP Board/Committee Update: **Fall 2024**





# Questions? Thank you!

MetroPlanOrlando.gov | 407-481-5672

Lara Bouck | Senior Transportation Engineer

[Lara.Bouck@MetroPlanOrlando.gov](mailto:Lara.Bouck@MetroPlanOrlando.gov)

