

BROUGHT TO YOU BY:



metroplan orlando
A REGIONAL TRANSPORTATION PARTNERSHIP



Path
to

2050

Central Florida

A Transportation Activity Book

How Old Will You Be in the Year 2050?

Find
out:

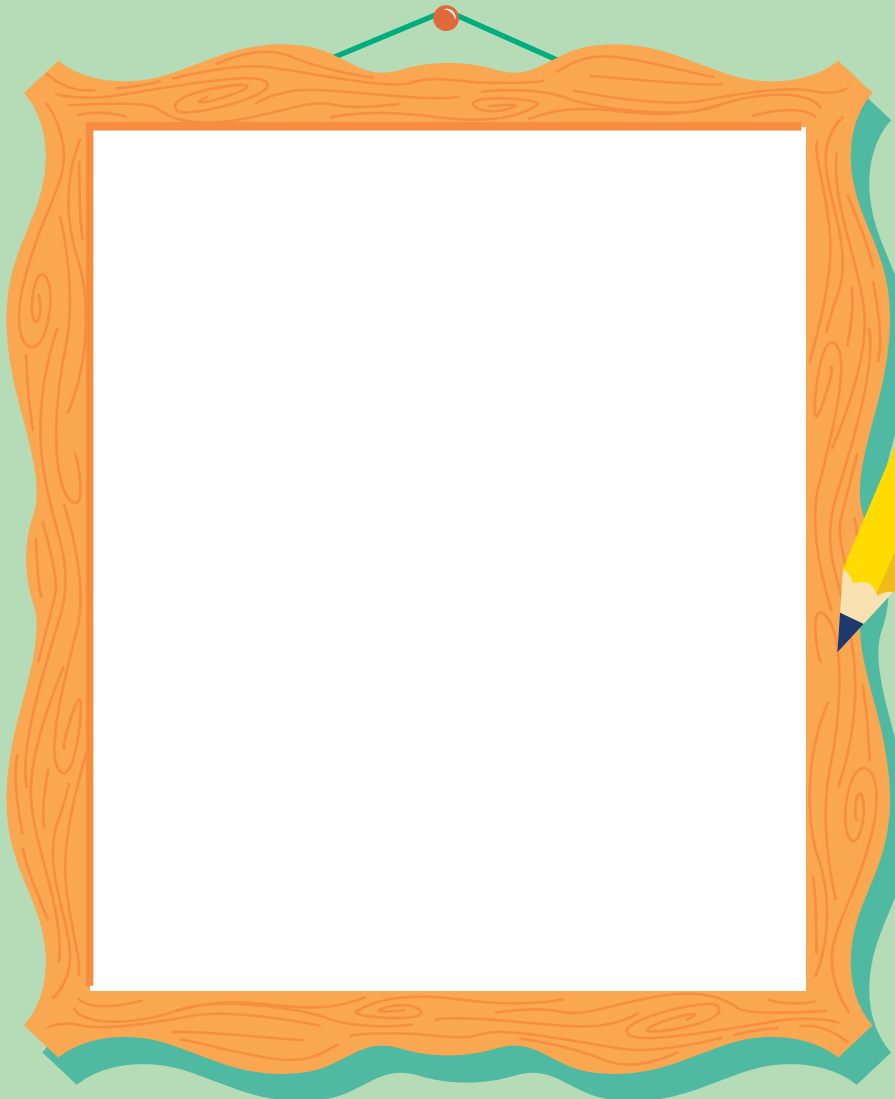
2050 - _____ (this year) = _____

_____ (previous answer) + _____ (your age today)

= _____ (how old you'll be in 2050)



Draw Yourself in the Year 2050



Getting Around in 2050

We're planning how
transportation will look
in Central Florida.
Help us to imagine the
future. It can be
what you make it.



Planning for Everyone

We want everyone to arrive safely,
no matter how they choose to get there.



Choices

How many of these have you used? (circle them)



car



scooter



bicycle



LYNX bus



walking



SunRail train



Vision Zero

Our safety program. VisionZeroCFL.gov

Metropolitan Transportation Plan

Our 2050 Plan. MetroPlanOrlando.gov/2050



Connect Central

Find Your Way through Our Region



Find your way to the year 2050, using the jet pack, rocket-powered skates, or flying car. They start at different places around Central Florida, but all of them can carry you to the goal.

Florida



Uncover the Hidden Message

This word search puzzle has a hidden safety message. Solve it by finding the 10 words in the list.

(Words can go in any direction and share letters. They can also cross over each other.)

Then, copy the unused letters, starting in the top left corner, into the blanks to reveal the message.

N	S	A	T	D	L	E	I	Y
O	F	E	T	E	Y	N	O	W
I	A	N	D	A	M	L	W	A
T	C	R	A	S	H	L	W	Y
U	H	C	T	A	W	O	E	S
A	T	H	G	I	L	B	R	H
C	R	O	S	S	W	A	L	K
U	Q	R	G	U	A	R	D	S
T	L	E	B	T	A	E	S	B

Find these:

- CRASH
- HELMET
- SEATBELT
- CROSSWALK
- CAUTION
- SLOW
- WATCH
- GUARDS
- LIGHT
- YIELD

hidden message

“

”

What's missing?

Many people get around by driving. What types of transportation are **missing** from this picture?

Unscramble the words to complete these sentences about other ways to get around. (Hint: start with the letter that is underlined)



YXLN SBUES: _____ travel around the region and stop on many streets and at stations.

RATISN: Moving on their own paths, _____ carry passengers up and down the lines.

CIYBLEC: You should wear your helmet when you pedal your _____ around town.

OTMCRECOYL: The _____ makes a loud noise, but it has no windows or doors.

LAWGKNI: All you need for _____ are your own two feet and a safe place to do it.

OCSTORE, ATKSBEADOR: When you get around by _____ you can leave it at the door. If you are on a _____, you can carry it with you.



Building for the Future

A lot goes into building the transportation system. It also costs a lot of money, which comes from taxes.

How much does it cost?

Pick the answers below that you think are correct by deciding on the correct number of zeros.

To build a mile of road

- \$5,000 (five thousand dollars)
- \$500,000 (five hundred thousand dollars)
- \$5,000,000 (five million dollars)

To build a mile of sidewalk

- \$16,000 (sixteen thousand dollars)
- \$160,000 (one hundred sixty thousand dollars)
- \$1,600,000 (one million, six hundred thousand dollars)

To build a mile of trail

- \$100,000 (one hundred thousand dollars)
- \$1,000,000 (one million dollars)
- \$10,000,000 (ten million dollars)

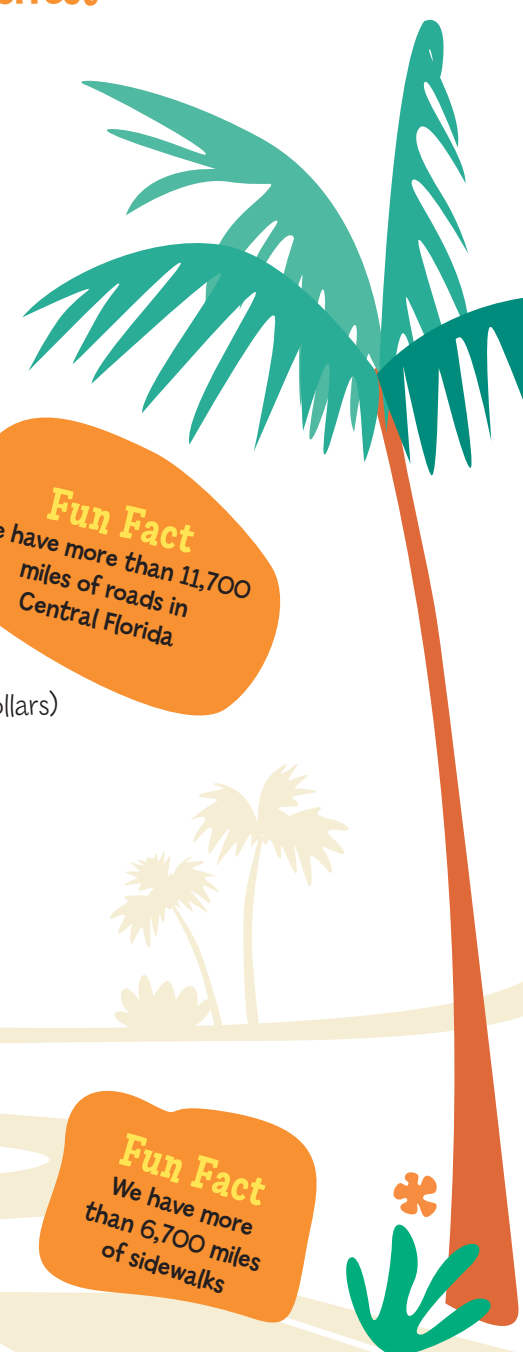
To buy a 40-foot-long bus

- \$56,300 (fifty-six thousand, three hundred dollars)
- \$563,000 (five hundred sixty-three thousand dollars)
- \$5,630,000 (five million, six hundred thirty thousand dollars)

Fun Fact
We have more than 11,700 miles of roads in Central Florida.

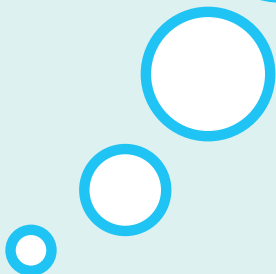
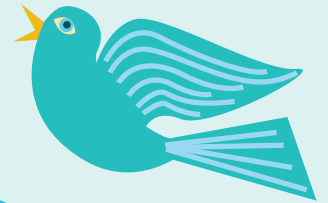
Fun Fact
LYNX runs 304 buses and has 4,304 bus stop locations

Fun Fact
We have more than 6,700 miles of sidewalks



Imagine the future

Draw your vision of how you'll get around Central Florida in the year 2050. Don't forget to put yourself in the picture!



Take a photo of your drawing and have an adult help you email it to us at **MTP@MetroPlanOrlando.gov**.
Tell us why you think the future looks like this.





metroplan orlando
A REGIONAL TRANSPORTATION PARTNERSHIP

Contact Us



250 South Orange Ave.
Suite 200
Orlando, FL 32801
MetroPlanOrlando.gov
MTP@MetroPlanOrlando.gov

©2024 Copyright MetroPlan Orlando