

MetroPlan Orlando 2050 Metropolitan Transportation Plan (MTP) Multimodal Needs Dashboard

User Guide



September
2025

Disclaimer

All provided GIS data is to be considered a generalized spatial representation which is subject to revisions. The data is provided as is with no implied warranty for usability. The data used for this application were developed from various sources and scales. The map information is not a survey. This map is intended to be used for planning purposes only and is not to be construed as a legal document. MetroPlan Orlando provides no warranty as to the map's accuracy or completeness, and assumes no liability for losses or damages incurred by persons relying on the information it provides. Any reliance on the information contained herein is at the user's own risk. The features here represented are not to be used to establish legal boundaries or entitlements. For specific information, contact the appropriate department or agency. The user assumes all responsibility for determining whether this file is appropriate for a particular purpose.

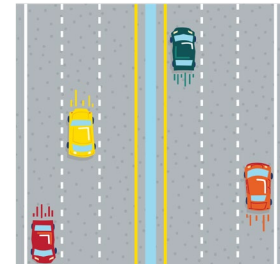
This user guide has been developed to assist with navigating the 2050 Metropolitan Transportation Plan (MTP) Multimodal Needs Dashboard. If you have questions about the 2050 MTP Multimodal Needs Dashboard, please contact us by email at Info@MetroPlanOrlando.gov or call us at (407) 481-5672. Likewise, if you are unable to access any part of this document, please notify us at Info@MetroPlanOrlando.gov so we can assist with a solution.

Background & Definitions

This interactive web-based map provides users a tool to view multimodal transportation needs for the region. These projects are a compilation of the multimodal travel needs which have been identified throughout Orange, Osceola, and Seminole Counties, and have been developed through a detailed planning process with feedback from local transportation partners.

The projects in the **State Highway System (On-system) and Off-system Needs** are organized by Needs List.

- The projects that are **eligible for MPO Funding** are included on the following needs lists:
 - Active Transportation: Includes projects pertaining to local and regional trails, on-street bicycle lanes, side paths, sidewalk improvements, and other related items.
 - Urban Corridor Improvements/Complete Streets: Includes non-capacity multimodal context-sensitive improvements that use a combination of bicycle and pedestrian, transit, and intersection solutions to improve traffic flow on constrained roadways without adding lanes.
 - High Injury Network (HIN) Countermeasures: Includes High Injury Network Countermeasure projects to improve safety, based on the projects identified in the Regional, County, and Local Safety Action Plans
 - TSMO / ITS: Includes projects pertaining to incident management, transportation demand management, signal retiming, and other related items.
- The projects that are **not eligible for MPO Funding** are included on the following needs lists:
 - FTE: Includes projects to be implemented by the Florida's Turnpike Enterprise
 - SHS: Includes projects located on the Florida State Highway System



Background & Definitions

The **Transit Needs** includes regional transit projects to support capital, operations, and maintenance improvements to the public transit system, and are anticipated to be funded using other funding sources.



The **Planning Consistency (PC) Needs** includes non-state roadways that are not included on the federal aid network; typically, not functionally classified. These needs are documented for planning consistency, including:

- CFX: Includes projects located on the Central Florida Expressway toll facilities for planning consistency
- Orange County & Municipalities: Includes projects located within Orange County and its many municipalities for planning consistency
- Osceola County & Municipalities: Includes projects located within Osceola County and its many municipalities for planning consistency
- Seminole County & Municipalities: Includes projects located within Seminole County and its many municipalities for planning consistency

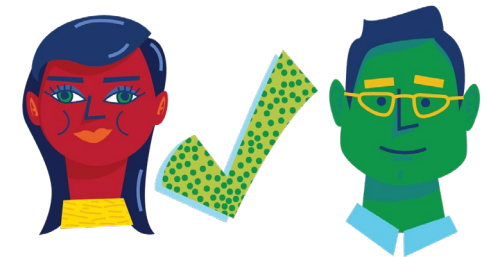


General Tool Tips

To navigate this interactive tool, the search widget (located at the top left of the screen) allows users to search through the full list of needs by project information (Roadway System, Needs List & Type, Jurisdiction, etc.), and allows to zoom to the specific need(s). The “Needs Details” window provides detailed project information to users. The “arrow” on the top right of the map window allows users to access a menu to reset the map view, show the legend, turn on/off layers for viewing, and change the basemap. Clicking the circular “reset” button in the bottom right corner of the viewer will reset the display, filters, and other selection to the original startup settings.

- Please allow a few seconds of time for the tool to load between clicks
- Make sure to select the appropriate needs list (using the Needs Lists filter at the bottom of each window) to ensure the information being displayed is consistent
- System display settings:
 - Set scale to 100% (recommended). Do not exceed 150%
 - Use recommended display resolution for your computer/device
- Bookmark the tool URL in your web browser for easy access

Link to Dashboard: [2050 MTP Multimodal Needs Dashboard](#)



Tool Elements Overview

Project Filters

2050 MTP Multimodal Needs

State Highway System & Off-System Needs List

Search...

Facility: US 192
MTP 2050 ID: 20,085
County: Osceola

Facility: US 441
MTP 2050 ID: 45,210
County: Orange

Facility: US 441 / Orange Blossom Trl
MTP 2050 ID: 20,046
County: Orange

Facility: US 192
MTP 2050 ID: 20,084
County: Osceola

Facility: US 441 / Orange Blossom Trl
MTP 2050 ID: 20,433
County: Orange

Facility: US 192 / Vine St
MTP 2050 ID: 20,082
County: Osceola

Facility: US 441 / Orange Blossom Trl
MTP 2050 ID: 20,057
County: Orange / Osceola

Facility: US 441 / Main St
MTP 2050 ID: 20,114
County: Osceola

Facility: SR 436 / Semoran Blvd
MTP 2050 ID: 20,263
County: Orange

Facility: Lake Underhill Rd
MTP 2050 ID: 30,277
County: Orange

Facility: Pine Hills Rd
MTP 2050 ID: 45,119
County: Orange

Facility: US 441 / Orange Blossom Trl
MTP 2050 ID: 20,067
County: Orange

Facility: US 441 / Orange Blossom Trl
MTP 2050 ID: 20,031
County: Orange

Facility: US 17/92 / Space Coast Pkwy
MTP 2050 ID: 20,360
County: Osceola

Facility: SR 438 / Silver Star Rd
MTP 2050 ID: 20,241
County: Orange

1 of 1485

State Highway System & Off-System Needs Details

MTP ID 2050

20,085

FEDERAL AID ELIGIBLE

Yes

SYSTEM

SHS (On-System)

NEEDS

NEEDS

ROAD NAME

US 192

PROJECT FROM

US 17/92 / John Young Pkwy

PROJECT TO

-

PROJECT LIMITS

US 192 at US 17/92 / John Young Pkwy

PROJECT DESCRIPTION

Evaluate intersection modifications including but not limited to tighter curb radii, adding pedestrian refuge islands, updated curb ramps, etc. in conjunction with signalization strategies at the intersection of US 192 at John Young Parkway.

PROJECT LENGTH

0.250

MAINTAINING AGENCY

FDOT

JURISDICTION

Kissimmee

COUNTY

Osceola

JURISDICTIONAL PRIORITY

High

PRIORITY METHOD TYPE

SHS

PRIORITY SCORE RAW

86.667

GOOGLE MAPS

View

State Highway System & Off-System Needs Map

Map Window Menu

State Highway System & Off-System Needs Map Legend

MTP 2050 SHS & Off-System Needs

Interstates

SHS

FTE

HIN Countermeasures

Urban Corridor Improvement Complete Streets

Active Transportation

TSMO / ITS

10 km
10 mi

Powered by Esri

SHS & Off-System Needs

SHS & Off-System Needs

SHS & Off-System Needs

Transit Needs

Planning Consistency Needs

SHS & Off-System Needs

Tool Functionality Overview

2050 MTP Multimodal Needs

State Highway System & Off-System Needs List

Search...

- Facility: US 192
MTP 2050 ID: 20,085
County: Osceola
- Facility: US 441 / Orange Blossom Trl
MTP 2050 ID: 20,046
County: Orange
- Facility: US 192
MTP 2050 ID: 20,084
County: Osceola
- Facility: US 441 / Orange Blossom Trl
MTP 2050 ID: 20,433
County: Orange
- Facility: US 192 / Vine St
MTP 2050 ID: 20,082
County: Osceola
- Facility: US 441 / Orange Blossom Trl
MTP 2050 ID: 20,057
County: Orange / Osceola
- Facility: US 441 / Main St
MTP 2050 ID: 20,114
County: Osceola
- Facility: SR 436 / Semoran Blvd
MTP 2050 ID: 20,263
County: Orange
- Facility: Lake Underhill Rd
MTP 2050 ID: 30,277
County: Orange
- Facility: Pine Hills Rd
MTP 2050 ID: 45,119
County: Orange
- Facility: US 441 / Orange Blossom Trl
MTP 2050 ID: 20,067
County: Orange
- Facility: US 441 / Orange Blossom Trl
MTP 2050 ID: 20,031
County: Orange
- Facility: US 17/92 / Space Coast Pkwy
MTP 2050 ID: 20,360
County: Osceola
- Facility: SR 438 / Silver Star Rd
MTP 2050 ID: 20,241
County: Orange

State Highway System & Off-System Needs Details

MTP ID 2050
FEDERAL AID ELIGIBLE

SYSTEM

NEEDS LIST

NEEDS TYPE: Geometric Improvements

ROAD NAME: US 192

PROJECT FROM: US 17/92 / John Young Pkwy

PROJECT TO: -

PROJECT LIMITS: US 192 at US 17/92 / John Young Pkwy

PROJECT DESCRIPTION: Evaluate intersection modifications including but not limited to tighter curb radii, adding pedestrian refuge islands, updated curb ramps, etc. in conjunction with signalization strategies at the intersection of US 192 at John Young Parkway.

PROJECT LENGTH: 0.250

MAINTAINING AGENCY: FDOT

JURISDICTION: Kissimmee

COUNTY: Osceola

JURISDICTIONAL PRIORITY: High

PRIORITY METHOD TYPE: SHS

PRIORITY SCORE RAW: 86.667

GOOGLE MAPS: View

State Highway System & Off-System Needs Map

Expand Map to Full Screen

State Highway System & Off-System Needs Map Legend

MTP 2050 SHS & Off-System Needs

- Interstates
- SHS
- FTE
- HIN Countermeasures
- Urban Corridor Improvements / Complete Streets
- Active Transportation
- TSMO / ITS

Explore needs projects in map

Switch between Needs Lists

Tool reset

SHS & Off-System Needs

SHS & Off-System Needs

SHS & Off-System Needs

Transit Needs

Planning Consistency Needs

SHS & Off-System Needs



How to Filter Projects

Important Project Filter Tips

- To ensure information being displayed is consistent with your Needs List selection:
- ✓ It is important that you first switch to the appropriate Needs List category at the bottom of each window in the map viewer tool
- ✓ Project filters allow single or multi-selection - make sure you use the filters within the same Needs Category
- Example: For SHS & Off System projects use the Needs List SHS & Off filter to select the project category and the Needs Type SHS & Off filter to filter by project type
- ✓ Project filters can be used individually or in any desired combination within the same Needs Category

2050 MTP Multimodal Needs

State Highway System & Off-System Needs List

State Highway System & Off-System Needs Details

State Highway System & Off-System Needs Map

State Highway System & Off-System Needs Map Legend

Needs List SHS & Off
Select Needs List

Needs List Transit
Select Needs List

Needs List PC
Select Needs List

Needs Type SHS & Off
Select Needs Type

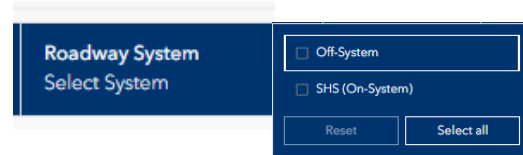
Needs Type Transit
Select Needs Type

Needs Type PC
Select Needs Type

How to Filter Projects

Use filters to view Needs by:

- Roadway System



Roadway System
Select System

☐ Off-System

☐ SHS (On-System)

- Needs List or Type



Needs List SHS & Off
Select Needs List

☐ Active Transportation

☐ FTE

☐ HIN Countermeasures

☐ Interstates

☐ SHS

☐ TSMO / ITS

Needs List Transit
Select Needs List

☐ Transit

Needs List PC
Select Needs List

☐ CFX

☐ Orange County & Municipalities

☐ Osceola County & Municipalities

☐ Seminole County & Municipalities

Needs Type SHS & Off
Select Needs Type

☐ Access Management

☐ Advanced ITS

☐ Bridge Widening/Replacement

☐ Capacity & Safety

☐ Communication

☐ CS (Reconstruction + Median)

Needs Type Transit
Select Needs Type

☐ Bus rapid transit corridors with dedicated bus lanes for enhanced travel

☐ Community/Circulator Routes

☐ Enhanced Service Area

☐ Expanded Transit Center

☐ Express Routes Downtown

Needs Type PC
Select Needs Type

☐ Advanced ITS

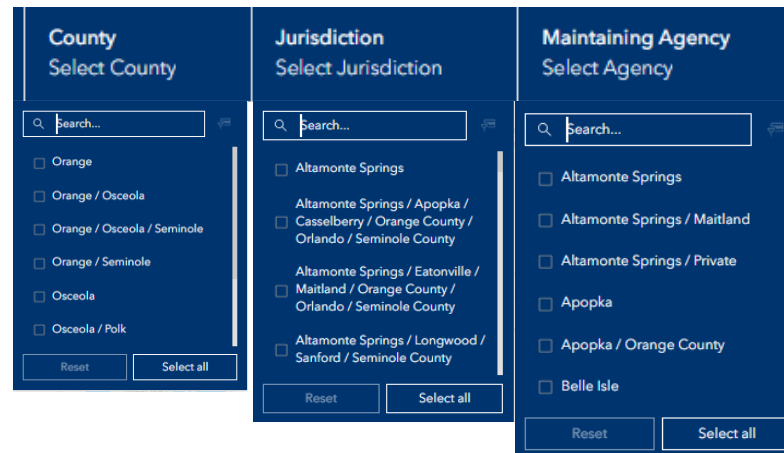
☐ Bus rapid transit corridors with dedicated bus lanes for enhanced travel

☐ Capacity & Safety

☐ CS (Reconstruction + Median)

☐ CS (Sidewalks + Resurfacing)

- County, Jurisdiction or Maintaining Agency



County
Select County

☐ Orange

☐ Orange / Osceola

☐ Orange / Osceola / Seminole

☐ Orange / Seminole

☐ Osceola

☐ Osceola / Polk

Jurisdiction
Select Jurisdiction

☐ Altamonte Springs

☐ Altamonte Springs / Apopka / Casselberry / Orange County / Orlando / Seminole County

☐ Altamonte Springs / Eatonville / Maitland / Orange County / Orlando / Seminole County

☐ Altamonte Springs / Longwood / Sanford / Seminole County

Maintaining Agency
Select Agency

☐ Altamonte Springs

☐ Altamonte Springs / Maitland





☐ Altamonte Springs / Private

☐ Apopka



☐ Apopka / Orange County

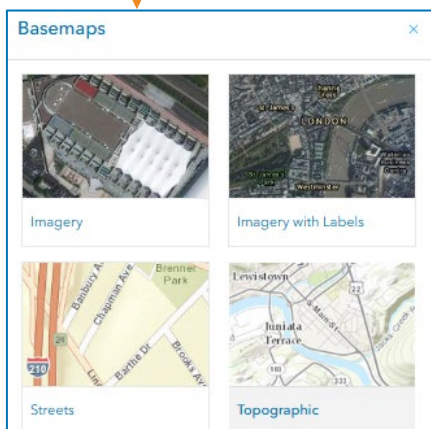
☐ Belle Isle

How to Navigate Interactive Map

- Enlarge the map to full screen by clicking the Expand  button in the upper right corner of the map
- Zoom in/out using the mouse wheel or the navigation buttons at the lower right of the map 
- Click on a project to bring up the project details pop-up dialog box
- Click on More Tools  in upper right and then Expand  to get additional functionality



- Click on Initial View  to zoom back to full initial map extent
- Click on Basemaps  to change map background (e.g., from topographic base to aerial base)





Example Projects Pop-Up

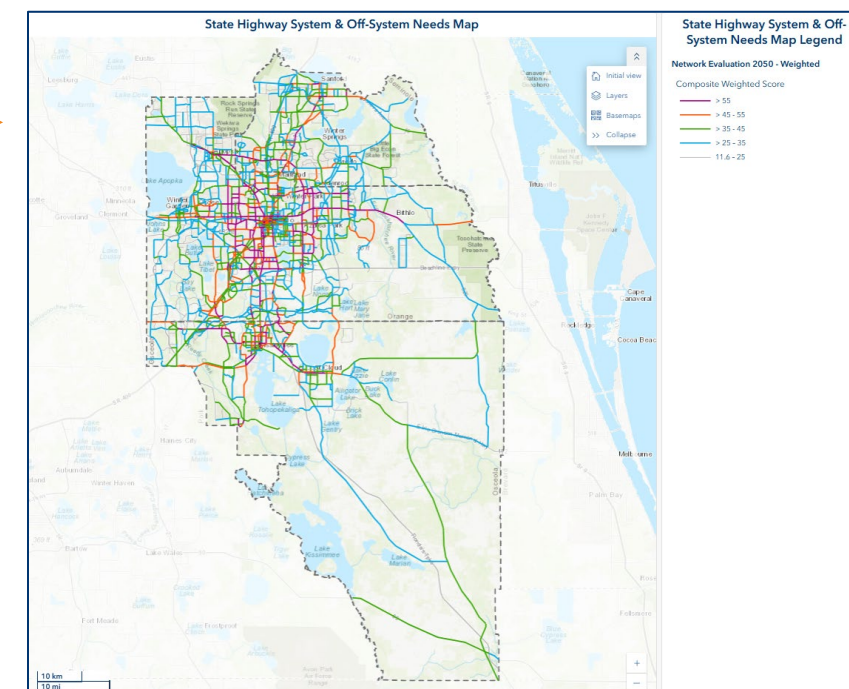
MTP 2050 Needs - All		^	×
 Zoom to  Pan			
MTP ID 2050	50,066		
FEDERAL AID ELIGIBLE	No		
SYSTEM	Off-System		
NEEDS LIST	Active Transportation		
NEEDS TYPE	New Shared Use Trail - 12'		
ROAD NAME	Azalea Park Trail		
PROJECT FROM	Avalon Trail		
PROJECT TO	SR 50 / Colonial Dr		
PROJECT LIMITS	Azalea Park Trail from Avalon Trail to SR 50 / Colonial Dr		
PROJECT DESCRIPTION	Add shared use path and bike/ped infrastructure including safety markings, signage, crosswalks at busy intersections, seating, bike parking, and shade.		
PROJECT LENGTH	12.313		
MAINTAINING AGENCY	Orlando		
JURISDICTION	Orange County / Orlando		
COUNTY	Orange		
JURISDICTIONAL PRIORITY	Low		
PRIORITY METHOD TYPE	Active Transportation		
PRIORITY SCORE RAW	56.667		
GOOGLE MAPS	View		

How to Navigate Interactive Map (cont.)

Map Layers

- Click on Layers  to open list of available map layers
- By default, only the MTP 2050 State Highway System & Off-System Needs layer color-coded by Needs Type is turned on
- Toggle layers on/off as desired using the Visibility  buttons
- Other available layers are:
 - MTP 2050 Road Needs color-code by raw prioritization score
 - MTP 2050 raw project prioritization results
 - 2045 Evaluation Network color-coded by weighted score
 - MTP 2045 composite weighted project prioritization (weighted by goal area)
 - 2050 Evaluation Network color-coded by weighted score
 - MTP 2050 composite weighted project prioritization results (weighted by goal area)
 - State Highway System
 - Florida Department of Transportation (FDOT) roadways
 - Florida Turnpike Enterprise (FTE) roadways
 - Central Florida Expressway (CFX) roadways
 - Federal Aid Highway System
 - Roadways identified in the Federal Aid Highway System
 - City Limits
- Layers can be viewed individually, or multiple layers can be turned on at the same time

Layers	
MTP 2050 SHS & Off-System Needs	
MTP 2050 Road Needs (Raw Score)	
Network Evaluation 2045 - Weighted	
Network Evaluation 2050 - Weighted	
State Highway System	
Federal Aid Highway System	
City Limits	
County Boundaries	



Example: Select Active Transportation Projects in Osceola County

2050 MTP Multimodal Needs

State Highway System & Off-System Needs List

Search...

Facility: Carroll Street, Florida Parkway, Michigan Ave, Old Dixie Highway, Osceola Pkwy, SR 600 / CR 525 / John Young Pkwy
MTP 2050 ID: 50,286
County: Osceola

Facility: Osceola Pkwy
MTP 2050 ID: 50,287
County: Osceola

Facility: CR531/531A, Ham Brown Rd, Mercantile/Enterp
MTP 2050 ID: 50,284
County: Osceola

Facility: Kissimmee Downtown Path Connector
MTP 2050 ID: 50,045
County: Osceola

Facility: CR531/531A, Cypress Pkwy, Koa St / Doverplum Avenue, Marigold Ave
MTP 2050 ID: 50,285
County: Osceola

Facility: Canoe Creek Rd
MTP 2050 ID: 50,019
County: Osceola

Facility: Bill Beck Trail
MTP 2050 ID: 50,034
County: Osceola

Facility: SunTrail segment along Neptune Rd
MTP 2050 ID: 50,030
County: Osceola

Facility: Canoe Creek Rd
MTP 2050 ID: 50,035
County: Osceola

Facility: Canoe Creek Rd
MTP 2050 ID: 50,036
County: Osceola

Facility: Neo City Loop
MTP 2050 ID: 50,099
County: Osceola

State Highway System & Off-System Needs Map

Search...

Orange / Osceola
Osceola
Seminole

Reset Select all

Layers
Basemaps
Collapse

State Highway System & Off-System Needs Map Legend

MTP 2050 SHS & Off-System Needs

- Interstates
- SHS
- FTE
- HIN Countermeasures
- Urban Corridor Improvements / Complete Streets
- Active Transportation
- TSMO / ITS

1 Make sure all windows are displaying SHS & Off System Needs

2 Set Needs List SHS & Off filter to "Active Transportation"

3 Set Needs List SHS & Off filter to desired project type as needed

4 Set County filter to "Osceola"

Details

MTP ID 2050
FEDERAL AID ELIGIBILITY
SYSTEM
NEEDS LIST
PROJECT DESCRIPTION

The following roadway segments are listed in the Osceola County ADA Transition Plan:
Donegan Ave, Michigan Ave
1. Carroll St needs sidewalk along both sides of the roadway from Donegan Ave to Michigan Ave.
2. Old Dixie Hwy needs sidewalk along both sides of the roadway from Donegan Ave to just south of Osceola Pkwy.
3. Osceola Pkwy needs sidewalk along both sides of the roadway from just east of John Young Pkwy to just east of Greenwalk Way, to the south of the roadway just before US 441, and on both sides of the roadway from S Orange Ave to Michigan Ave and from Bill Beck Blvd to Plumwood Cir.
4. Michigan Ave needs sidewalk to the east of the roadway from the intersection of Michigan Ave/Osceola Pkwy and Ridge St.
5. Florida Pkwy needs sidewalk to the east of the roadway from Osceola Pkwy to Parkway Middle School.

PROJECT LENGTH: 5.524
MAINTAINING AGENCY: Osceola County
JURISDICTION: Osceola County
COUNTY: Osceola
JURISDICTIONAL PRIORITY: High
PRIORITY METHOD TYPE: School Mobility
PRIORITY SCORE RAW: 71.250
GOOGLE MAPS: View

OSCEOLA POLK

5 km
2 mi

Powered by Esri

Example: Select Active Transportation Projects in Osceola County

2050 MTP Multimodal Needs

2050 MTP Multimodal Needs

2050 MTP Multimodal Needs

2050 MTP Multimodal Needs

2050 MTP Multimodal Needs

2050 MTP Multimodal Needs

2050 MTP Multimodal Needs

2050 MTP Multimodal Needs

2050 MTP Multimodal Needs

2050 MTP Multimodal Needs

2050 MTP Multimodal Needs

State Highway System & Off-System Needs List

Search...

Facility: Carroll Street, Florida Parkway, Michigan Ave, Old Dixie Highway, Osceola Pkwy, SR 600 / CR 525 / John Young Pkwy

Ave Trail
MTP 2050 ID: 50,029
County: Osceola

Facility: CR531/531A, Ham Brown Rd, Mercantile/Enterp
MTP 2050 ID: 50,284
County: Osceola

Facility: Kissimmee Downtown Path Connector
MTP 2050 ID: 50,045
County: Osceola

Facility: CR531/531A, Cypress Pkwy, Koa St / Doverplum Avenue, Marigold Ave
MTP 2050 ID: 50,285
County: Osceola

Facility: Canoe Creek Rd
MTP 2050 ID: 50,019
County: Osceola

Facility: Bill Beck Trail
MTP 2050 ID: 50,034
County: Osceola

Facility: SunTrail segment along Neptune Rd
MTP 2050 ID: 50,030
County: Osceola

Facility: Canoe Creek Rd
MTP 2050 ID: 50,035
County: Osceola

Facility: Canoe Creek Rd
MTP 2050 ID: 50,018
County: Osceola

Facility: Kissimmee St Cloud Connector
MTP 2050 ID: 50,102
County: Osceola

Facility: Toho Valencia Bridge
MTP 2050 ID: 50,099
County: Osceola

Facility: Neo City Loop

State Highway System & Off-System Needs Details

1 of 25

MTP ID 2050: 50,286

FEDERAL AID ELIGIBLE: Yes

SYSTEM: Off-System

NEEDS LIST: Active Transportation

NEEDS TYPE: Sidewalk - 5'

ROAD NAME:

PROJECT FROM:

PROJECT TO:

PROJECT LIMITS:

PROJECT DESCRIPTION:

PROJECT LENGTH: 5.524

MAINTAINING AGENCY: Osceola County

JURISDICTION: Osceola County

COUNTY: Osceola

JURISDICTIONAL PRIORITY: High

PRIORITY METHOD TYPE: School Mobility

PRIORITY SCORE RAW: 71.250

GOOGLE MAPS: View

State Highway System & Off-System Needs Map

State Highway System & Off-System Needs Map Legend

MTP 2050 SHS & Off-System Needs

MTP 2050 Needs - All

Zoom to

Pan

MTP ID 2050: 50,035

FEDERAL AID ELIGIBLE: Yes

SYSTEM: Off-System

NEEDS LIST: Active Transportation

NEEDS TYPE: New Shared Use Trail - 12'

ROAD NAME: Canoe Creek Rd

PROJECT FROM: Deer Run Rd

PROJECT TO: US 192 / Irlo Bronson Memorial Hwy

PROJECT LIMITS: Canoe Creek Rd from Deer Run Rd to US 192 / Irlo Bronson Memorial Hwy

PROJECT DESCRIPTION: A shared use path is being proposed for the Canoe Creek Road widening project with Osceola County. As part of the Canoe Creek Widening project from Deer Run Road to US 192, a shared use path is being proposed as part of the proposed typical section to increase pedestrian safety and meet the TRN-5 existing/proposed multi-use path map that was created by Osceola County.

PROJECT LENGTH: 4.667

MAINTAINING AGENCY: Osceola County

JURISDICTION: Osceola County / St. Cloud

COUNTY: Osceola

JURISDICTIONAL PRIORITY: High

PRIORITY METHOD TYPE: Active Transportation

5

Search for specific project

6

Scroll through project selection

7

Get project details by clicking on a segment

8

Clear selection to go back to Start Menu