



WHERE ADVENTURES CONVERGE | #LAUNCHFROMHERE

WE'RE BLAZING TRAILS



Shared-Use Nonmotorized (SUN) Trail Regional System

Coast To Coast Connector

Slate Of Florida Department of Transportation Systems Planning Office



LEGEND

- Existing Trail
- Programmed or Funded for Construction
- Partially Funded for Pre-Construction Phases

— Existing Trail Name
— Project in Development

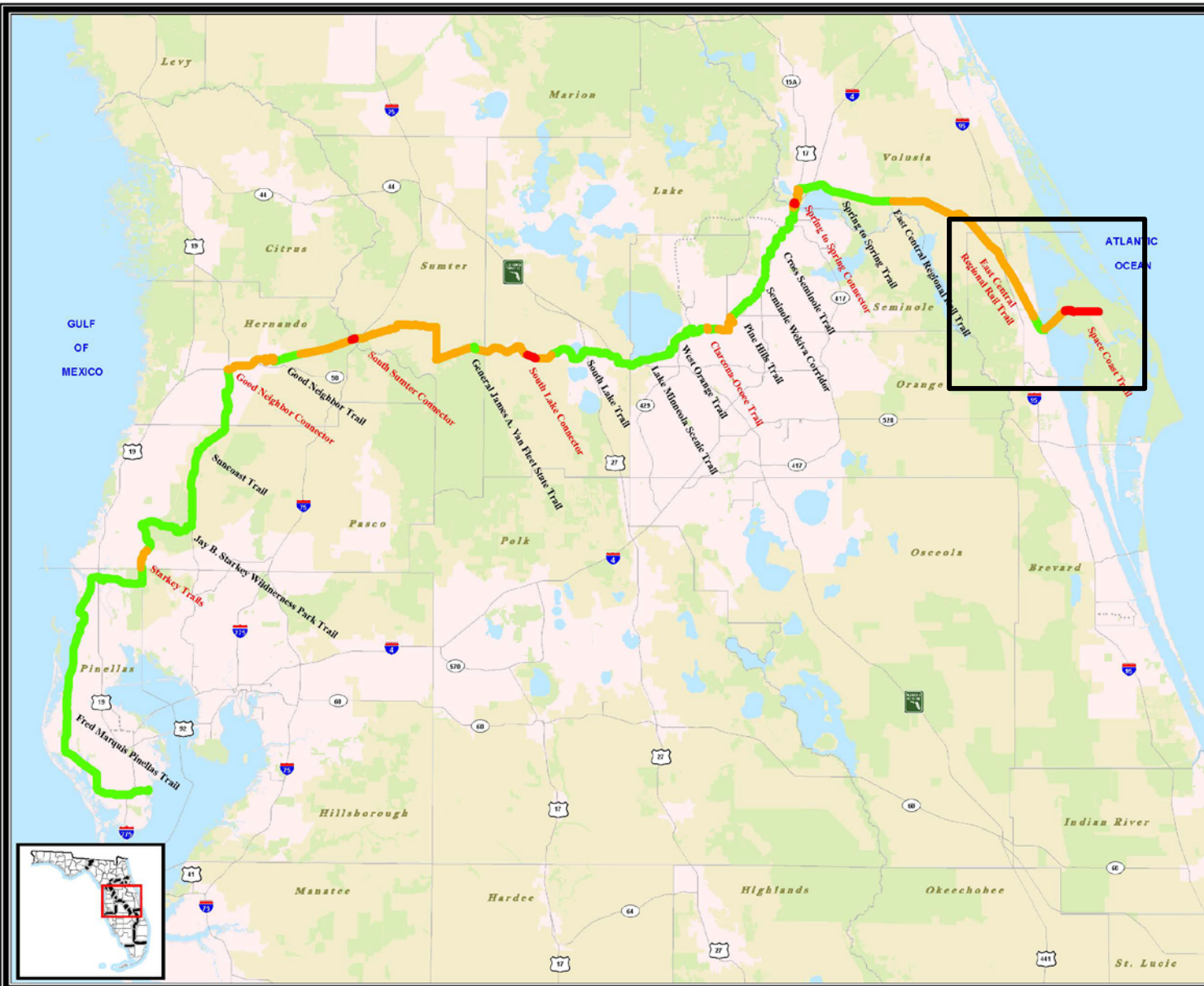
NOTES:
No Warranties: This map and its content is made available by the Florida Department of Transportation (FDOT) on an "as is", "as available" basis without warranties of any kind, expressed or implied. This product is for reference purposes only and is not to be construed as a legal document or survey instrument. Information is subject to change.
Disclaimer of Liability: The user of this map and data assumes all responsibility and risk for the use of both. Under no circumstances, including negligence, shall the FDOT or its employees be liable for any direct, indirect, incidental, special, exemplary or consequential damages, or lost profits that result from the use, misuse or inability to use the map and data.

Additional trail information may be obtained by contacting your local government.

Source: Florida Department of Transportation -Systems Planning Office

Date: 10/31/2017

- Existing Conditions**
- SIS Highways
 - Planned SIS roads
 - County Boundaries
 - Water
 - Urban Areas
 - Managed Lands



Shared-Use Nonmotorized (SUN) Trail Regional System

St. Johns River - to - Sea Loop

State of Florida Department of Transportation
Systems Planning Office

LEGEND

- Existing Trails
- Programmed or Funded for Construction
- Partially Funded for Pre-Construction Phases
- Unfunded Gap

Existing Trail Name
Project in Development

NOTES:

No Warranties: This map and its content is made available by the Florida Department of Transportation (FDOT) on an "as is", "as available" basis without warranties of any kind, expressed or implied. This product is for reference purposes only and is not to be construed as a legal document or survey instrument. Information is subject to change.

Disclaimer of Liability: The user of this map and data assumes all responsibility and risk for the use of both. Under no circumstances, including negligence, shall the FDOT or its employees be liable for any direct, indirect, incidental, special, exemplary or consequential damages, or lost profits that result from the use, misuse or inability to use the map and data.

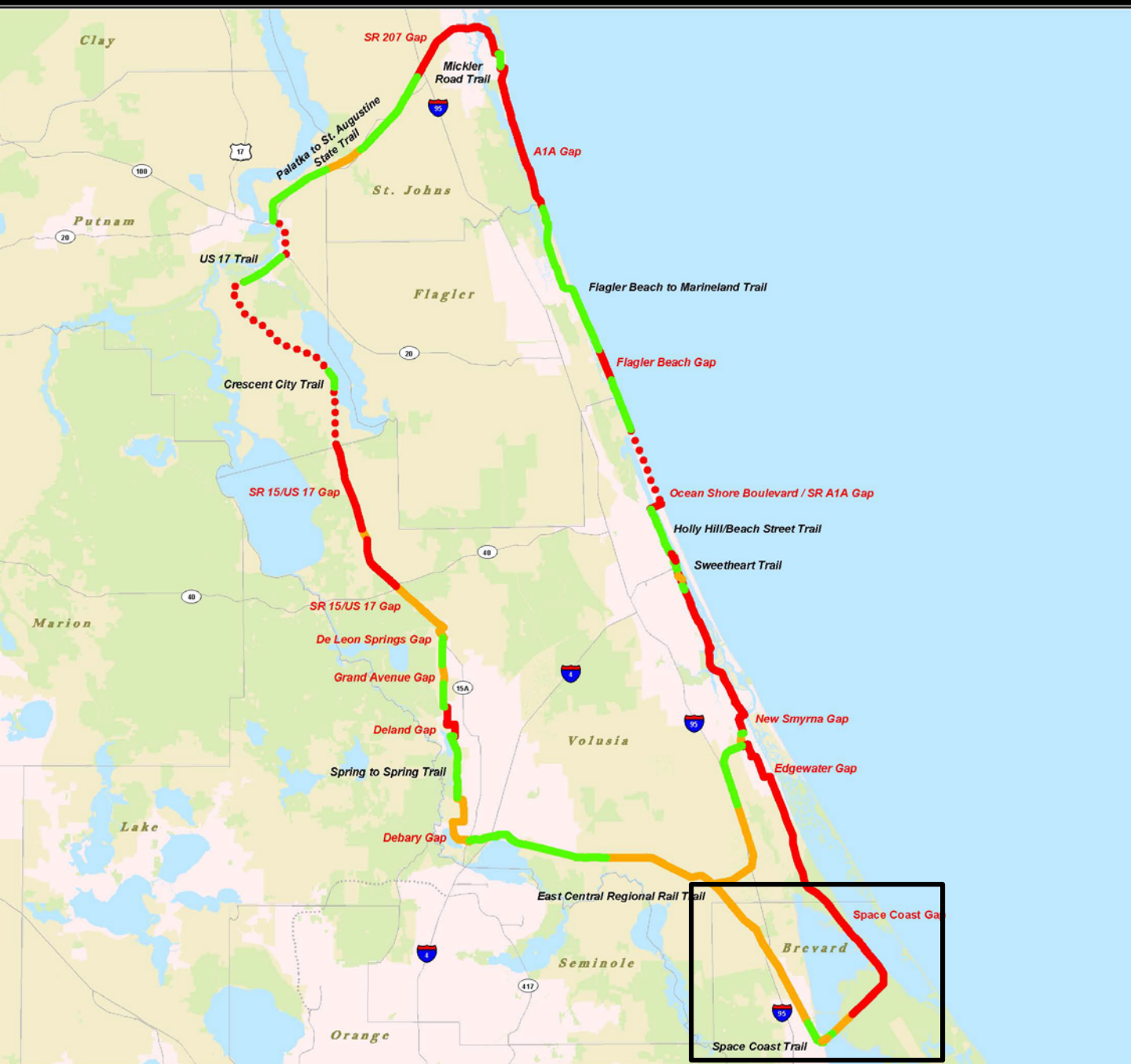
Additional trail information may be obtained by contacting your local government.

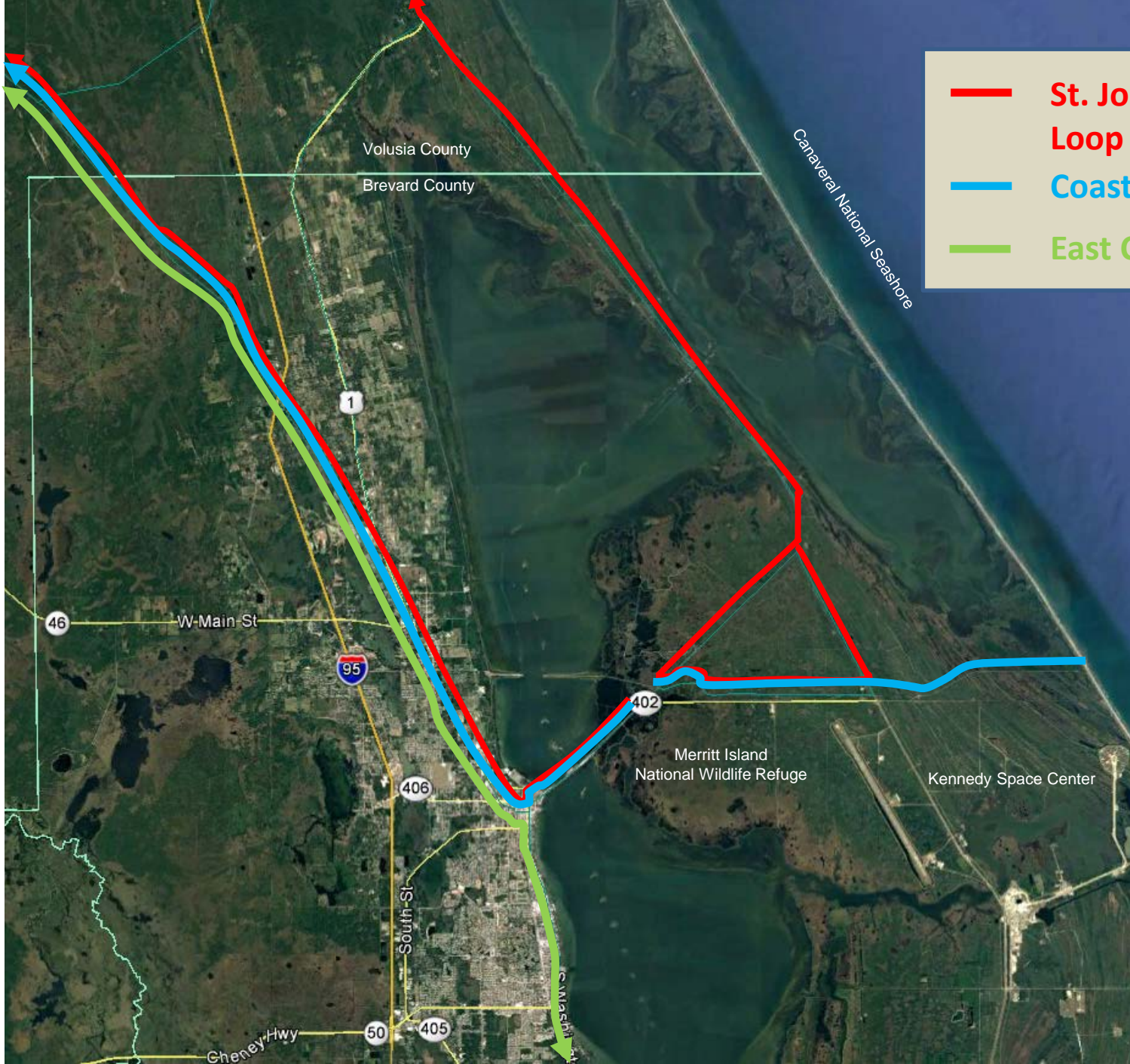
Source:
Florida Department of Transportation
-Systems Planning Office

Date: 10/19/2017

Existing Conditions

- SIS Highways
- Planned SIS roads
- County Boundaries
- Water
- Urban Areas
- Managed Lands





- **St. Johns River to Sea Loop Trail**
- **Coast to Coast Trail**
- **East Coast Greenway**

Volusia County
Brevard County

Canaveral National Seashore

1

46

W Main St

95

402

Merritt Island
National Wildlife Refuge

Kennedy Space Center

406

South St

Swan St

Cheney Hwy

50

405

Titusville becoming a Trail Town



Video can be found on Titusville Website





NOW OPEN

The **Titusville Welcome Center** is open for business for all to come and learn about our great town and our wonderful trails.

The **Welcome Center** provides cycle info and insider tips on adventures you can launch from here. Learn about nature and wildlife stops, kayak and boat launch areas, and special rocket viewing sites, plus KSC behind-the-gates tours. Get acquainted with cruising from Port Canaveral, and discover shopping, dining and other vacation finds that will help stretch your \$\$\$ and your fun.

419 South Hopkins Avenue
 Julia Street Parking Lot
 Titusville, FL 32796
 Phone: (321) 607-6216.
Hours: Wednesday - Sunday: 9:00am - 5:00pm



Located inside the Welcome Center:



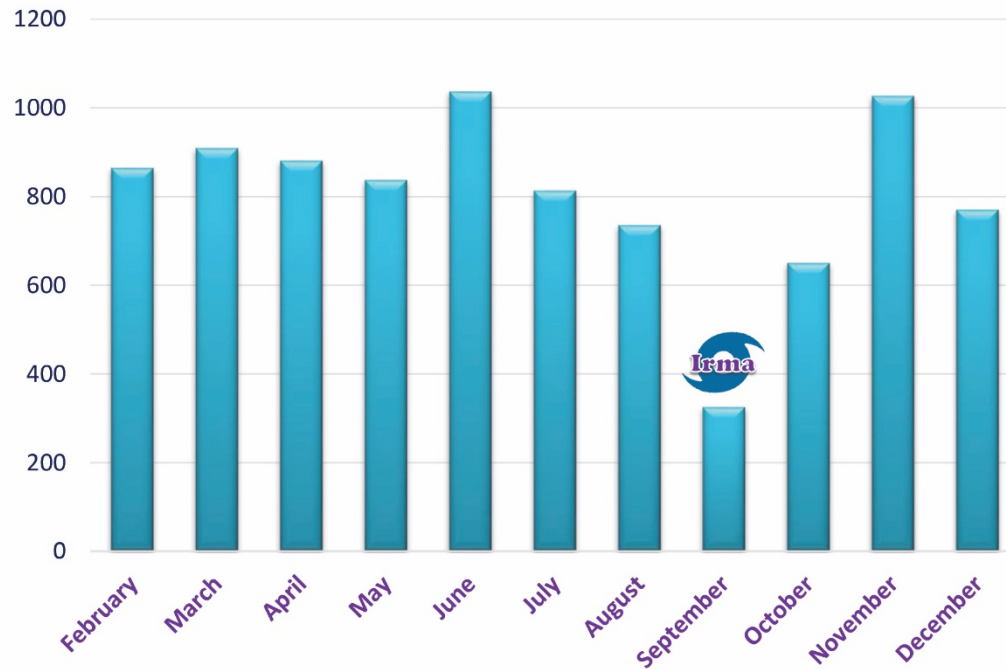
Open Tuesday - Saturday 9:00 - 5:00
(321) 607-6208

Hourly & Daily Rentals	Weekly Specials
Comfort Bikes: \$7/hour, \$30/day	Comfort Bikes: \$99 per week
Road Bikes: \$11/hour, \$50/day	Road Bikes: \$149 per week





Welcome Center 2017 Visitors



Total: 8,848
Average Daily: 38.5



Communicating with our Neighbors

City of Titusville

"Gateway to Nature and Space"

556 SOUTH WASHINGTON AVENUE
TITUSVILLE, FLORIDA 32796-3584
POST OFFICE BOX 2856 (32781-2856)

July 26, 2017

RE: City of Titusville Information

Dear Titusville Resident:

As we are all busy in our day-to-day lives, I'm writing with hopes of drawing your attention to some of the latest developments in our city. The enclosed card highlights just a few of our latest developments.

Each quarter our city publishes a magazine and video called "Titusville Talking Points" to help keep you informed on the projects and activities in our city. You can access "Titusville Talking Points" on the internet directly by clicking on: <http://www.Titusville.com/Page.asp?NavID=2143> or you can access the publication from our city website: www.Titusville.com. From our website main page, click on: I want to view...then click on: Titusville Talking Points.

Another exciting addition to our city is the Coast-to-Coast Trail. The Coast-to-Coast is a 275-mile multipurpose trail that goes across our state linking Titusville with St. Petersburg. With this and two other trails (East Coast Greenway and St. Johns River-to-Sea Loop) converging here we anticipate increased pedestrian traffic in our city. You will see many improvements that are designed to help separate vehicles from pedestrians to keep both safe. I ask you to brush up on safety rules when driving, motorcycling, cycling, running, and walking along our streets and trails. As the old saying goes, Safety starts with YOU! The Titusville Police Department has produced a short video for your review - I hope you all take the time to review it with your family. <http://www.Titusville.com/BikeSafe>.

Thank you for allowing me to be your Mayor, it's a pleasure to serve the great people of Titusville.

Sincerely,

Walt Johnson

Walt Johnson
Mayor



OFFICE OF THE MAYOR
(321)-867-3702
Fax (321)-393-4794
www.titusville.com

See What's New in HISTORIC Downtown TITUSVILLE



Visit the Welcome Center Celebrating its Six-Month Anniversary!

Open Tuesday - Saturday from 9AM - 5PM
419 South Hopkins Avenue

Located in the heart of Downtown Titusville, this local destination has attracted visitors from 43 different states and 28 different countries. Complete with bathrooms, local area maps and water fountains, the Welcome Center also houses the Coast-to-Coast Bicycle Company, which provides bicycle service rentals, repairs, sales and events.

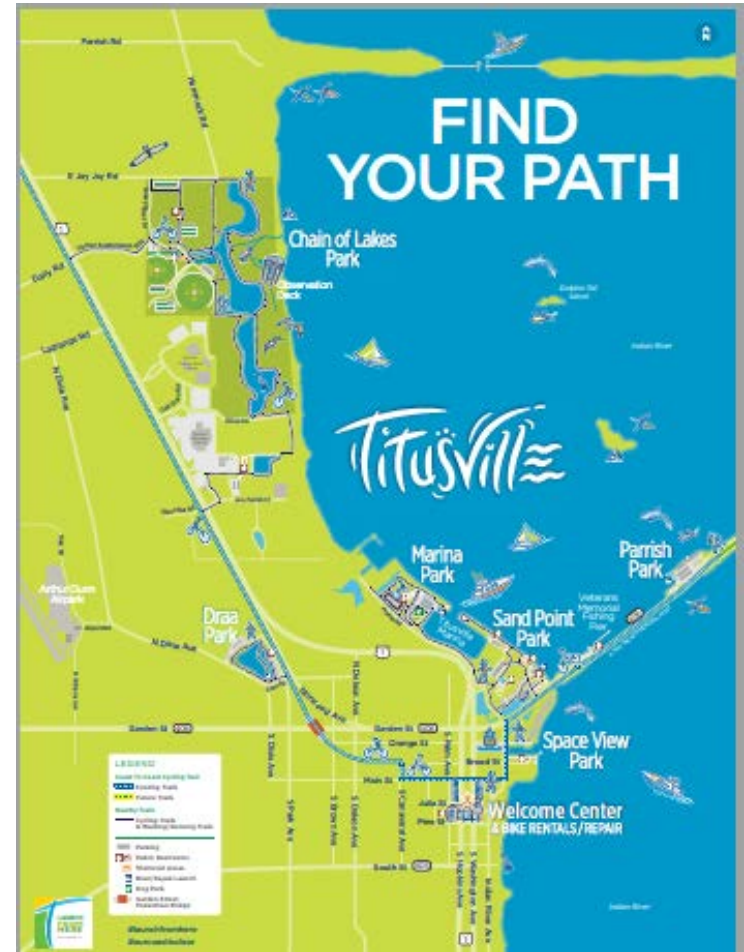
The Welcome Center is the perfect place to start your bicycle trip on one of the three connecting trails: the Coast-to-Coast, East Coast Greenway, and St. John's River-to-Sea Loop. To start your adventure, stop in and pick up a free map for one of these scenic and breathtaking trails!



Coast to Coast
Bicycle Company
TITUSVILLE, FL
Bike Titusville.com
doug@biketitusville.com
(321) 607-6208

Downtown Improvements Continue

Downtown Titusville is coming to life with exciting new enhancements! Charming new flower baskets are hanging from the light poles, and beautiful landscaping now lines the sidewalks. Wayfinding signs for bicyclists and pedestrians are also in place, along with downtown business directory signs to help you plan the perfect day.



Trail Beautification Program

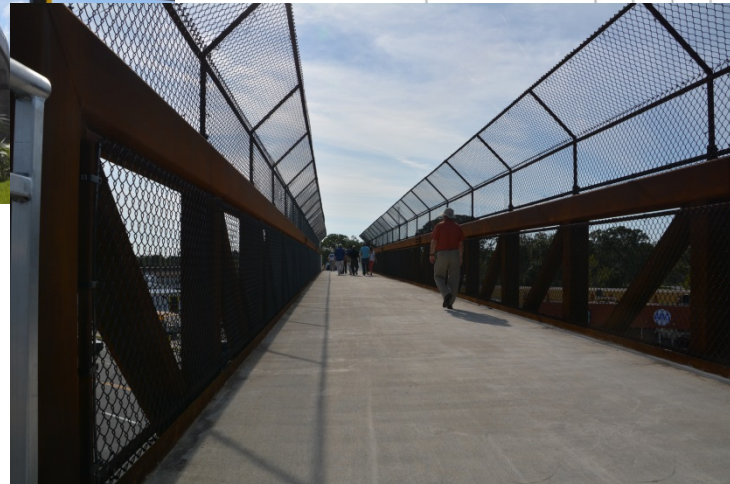


Wayfinding Signage



Garden Street Pedestrian Bridge

- Completed May 2016



Wayfinding Signage & CRA Improvements





Titusville Police Department



Education- Life Safety



TITUSVILLE FIRE **BICYCLE SAFETY TIPS**

HAND SIGNALS

FRONT VIEW	HAND SIGNAL	BACK VIEW
	<p>LEFT TURN</p> <p>Extend your left arm out sideways with all fingers extended or use your index finger to point left.</p>	
	<p>RIGHT TURN</p> <p>Extend your left arm out sideways, bent at a 90-degree angle at the elbow joint, hand pointing forward and the palm of the hand facing forward.</p>	
	<p>ALTERNATIVE RIGHT TURN</p> <p>Extend your right arm out straight with all fingers extended or use your index finger to point right.</p>	
	<p>STOPPING OR SLOWING</p> <p>Extend your left or right arm out sideways and hand at a 90-degree angle at the elbow joint, hand pointing downwards and the palm of the hand facing backwards.</p>	



Adopt-A-Trail



WHERE ADVENTURES CONVERGE | #LAUNCHFROMHERE

BLAZING TRAILS IN



Titusville

Friday Nite Live Street Party
Swing Into September

FEATURING

- Brown Bag Brass Band
- Wine Walk
- Classic Cars
- Food Court
- Vendors
- 50/50 Give Away

Performances by Downtown Dance Studio and Fierce Dance School

8:45PM Mayor Johnson accepts the "Trail Town" designation sign from DEP Florida Greenways & Trails
Titusville becomes Florida's 2nd Trail Town

BLAZING TRAILS IN
Titusville

Hosted By Our Sponsors

www.DowntownTitusville.org



Questions?

Sarah Kraum

Space Coast Transportation Planning Organization

Multi-Modal Program Specialist

321.690.6890

Sarah.kraum@brevardfl.gov

