

# Tentative Five-Year Work Program

Fiscal Year 2022/23 to Fiscal Year 2026/27



MetroPlan Orlando MPO  
December 2, 2021



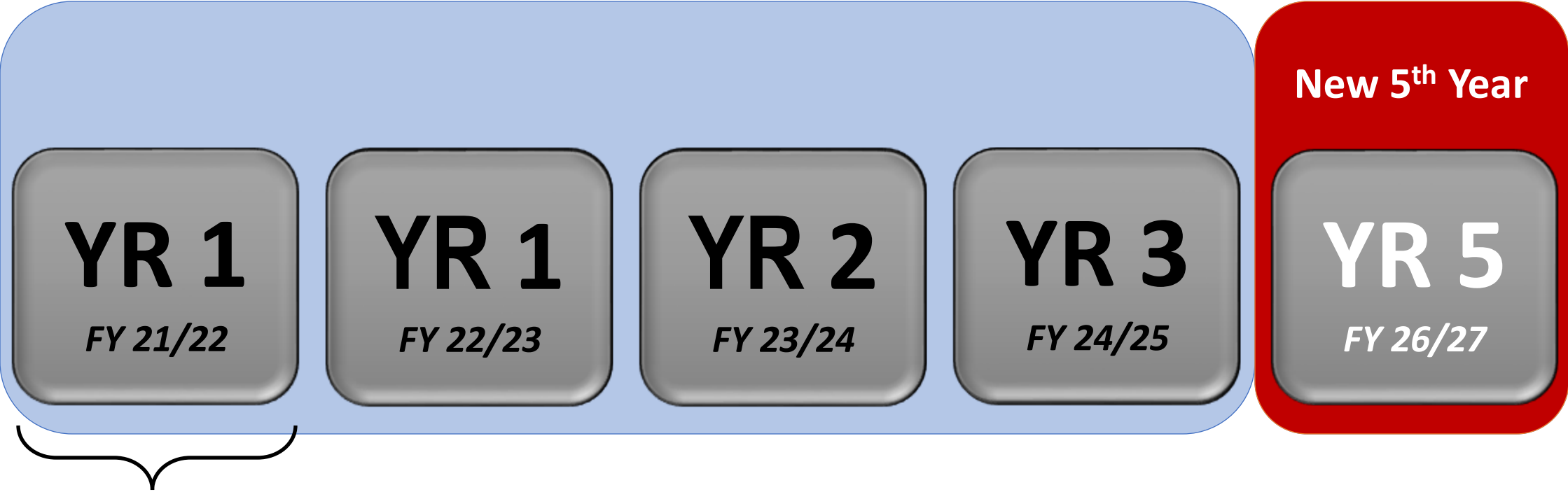
## ABOUT THE FDOT WORK PROGRAM

The FDOT Work Program is a five-year plan that includes:

- Public transit, seaport, airport and rail projects
- Transportation planning, Transportation Systems Management & Operations, engineering and design
- Right-of-Way acquisition and construction activities
- FDOT Fiscal Year: July 1st to June 30th
- Projects based on MPO Priorities and SIS/FDOT Priorities

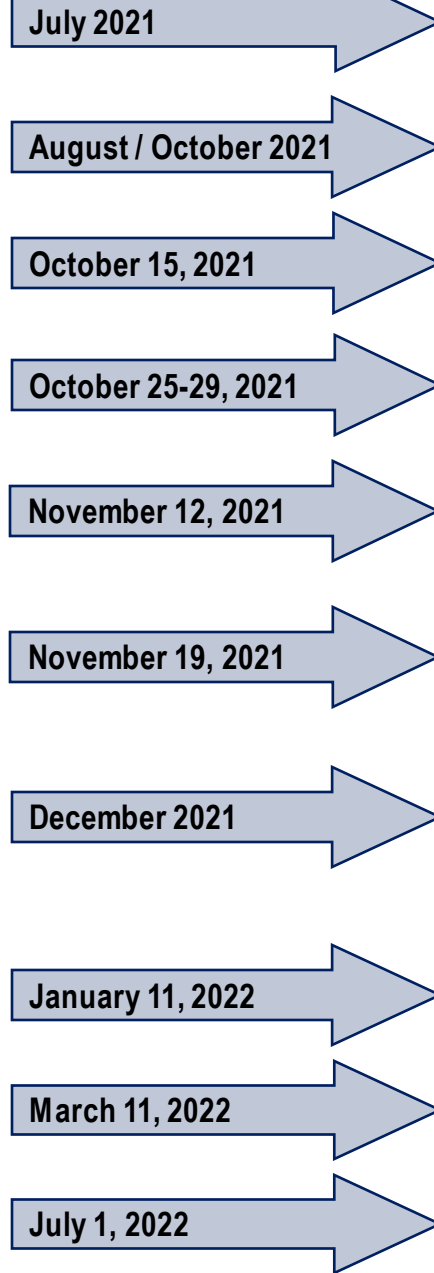
# PROGRESSION OF THE WORK PROGRAM

## CURRENT AND FUTURE WORK PROGRAM



LOCKDOWN

# A YEAR IN REVIEW OF THE WORK PROGRAM



- MPO Submits Project Priority List to FDOT
- Florida Revenue Estimating Conference
- FDOT District 5 Work Program Snapshot
- FDOT District 5 Virtual Work Program Public Hearing
- Deadline for Public Comments
- Deadline for MPO Written Objections
- Florida Transportation Commission Public Hearing  
• Central Office Submits Preliminary Tentative Work Program to Executive Office of the Governor
- Florida State Legislation 2022 Session Begins
- Florida State Legislation 2022 Session Ends
- Adoption of FY 2022/23 to FY 2026/27 Work Program

# FIVE-YEAR WORK PROGRAM FUNDING

## The Five-Year Outlook

County	FY 2022/23	FY 2023/24	FY 2024/25	FY 2025/26	FY 2026/27	TOTAL
Orange	\$358,143,984	\$246,882,541	\$218,744,900	\$161,349,527	\$182,541,561	\$1,167,662,513
Osceola	\$88,870,442	\$69,126,327	\$101,609,774	\$21,322,418	\$5,088,317	\$286,017,278
Seminole	\$69,540,822	\$42,417,636	\$34,755,177	\$10,136,705	\$5,524,400	\$162,374,740
<b>TOTAL</b>	<b>\$516,555,248</b>	<b>\$358,426,504</b>	<b>\$355,109,851</b>	<b>\$192,808,650</b>	<b>\$193,154,278</b>	<b>\$1,616,054,531</b>

# MetroPlan Orlando Region – Funding Breakdown

Project Type	Five-Year Estimated (Orange)	Five-Year Estimated (Osceola)	Five-Year Estimated (Seminole)	Total
Safety	\$63,418,176	\$54,837,196	\$14,637,538	\$132,892,910
Capacity	\$189,815,834	\$120,918,419	\$38,103,258	\$348,837,511
Preservation	\$71,099,650	\$58,452,056	\$32,365,273	\$161,916,979
Multi-modal	\$679,751,206	\$14,075,000	\$37,500,000	\$731,326,206
Operations	\$23,271,469	\$25,265,250	\$7,427,846	\$55,964,565
Bike/Ped	\$29,311,567	\$7,747,606	\$8,912,259	\$45,971,432
Misc.	\$110,994,611	\$4,721,751	\$23,428,566	\$139,144,928

Priority Projects

**22**

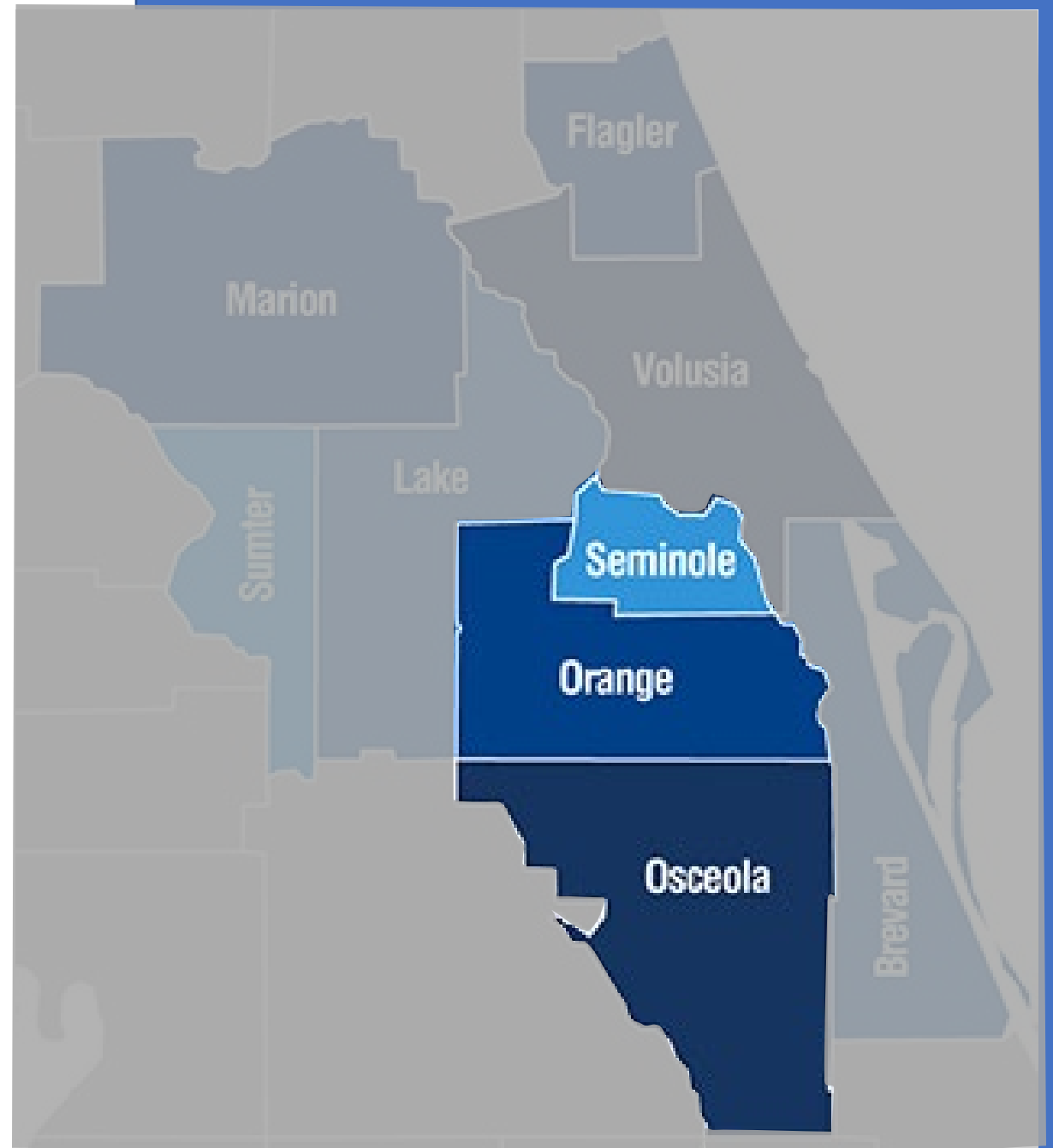
**\$316,498,501**







# Key Projects



# KEY PROJECTS – I-4 Managed Lanes

## **FM# 242484-8:**

- NHS Priority #2, Orange County
- Interstate 4, from east of C.R. 522 (Osceola Parkway) to west of S.R. 528 (Beachline Expressway)
- Right-of-Way funding in FYs 22/23 to 25/26
- Funding in Tentative Work Program: \$113,859,832

## **FM# 242484-7:**

- NHS Priority #3, Orange County
- Interstate 4, from west of S.R. 528 (Beachline Expressway) to west of S.R. 435 (Kirkman Road)
- Design funded in FY 22/23, and Right-of-Way funding in FY 22/23 and 23/24
- Funding in Tentative Work Program: \$11,805,604

## **FM# 242592-4:**

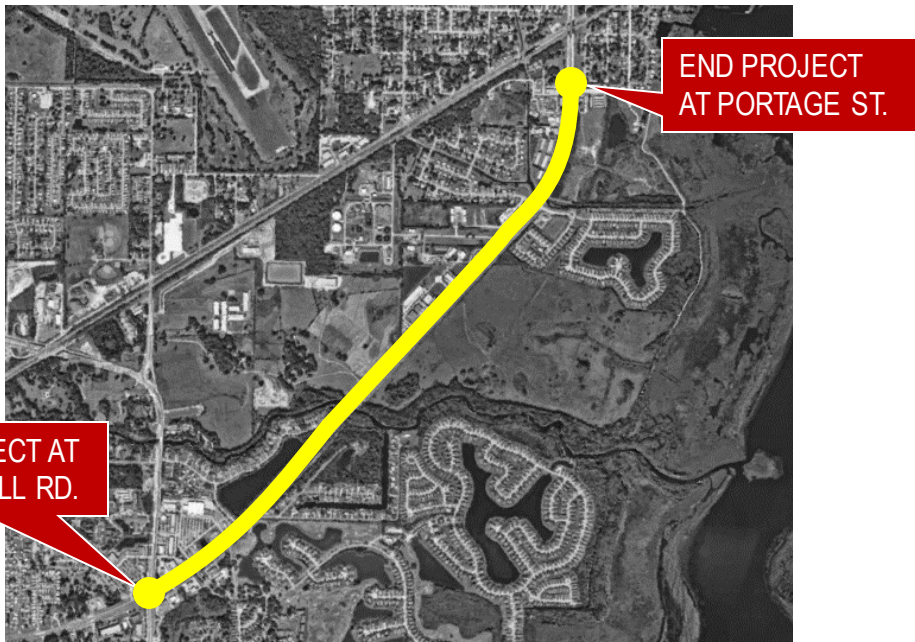
- NHS Priority #4, Seminole County
- Interstate 4, from east of S.R. 434 to east of S.R. 15/600 (U.S. 17/92)
- Design funded in FY 24/25, and Right-of-Way funding in FYs 22/23, 23/24, and 25/26
- Funding in Tentative Work Program: \$32,668,238



# KEY PROJECTS – Capacity

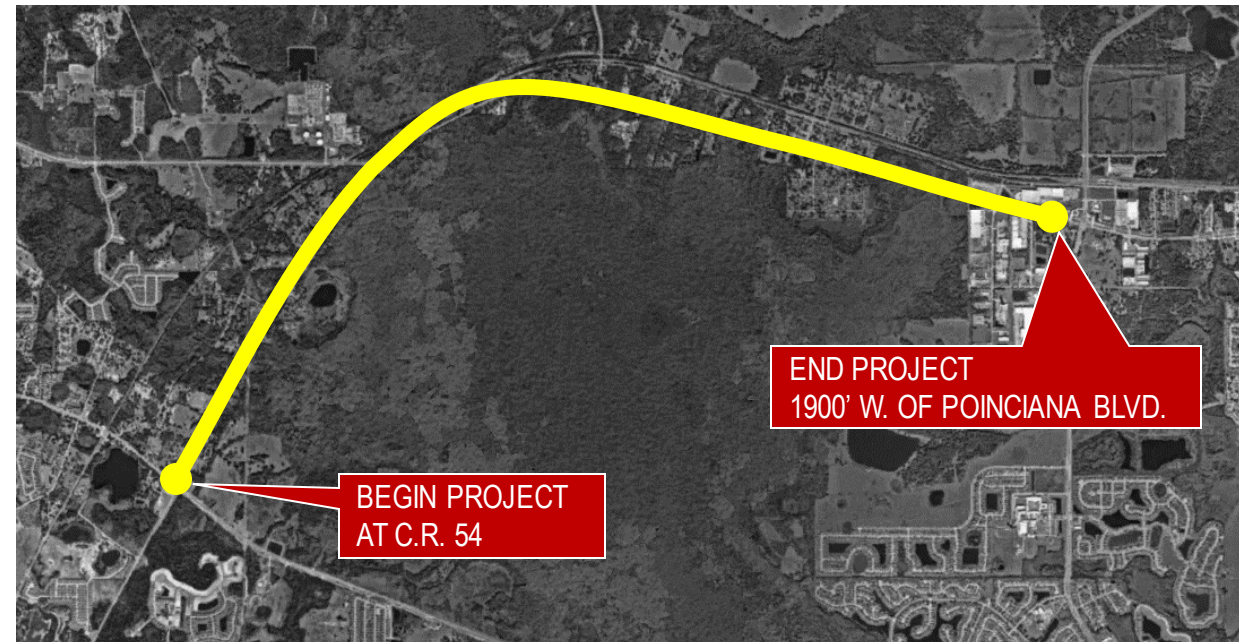
## FM# 418403-3:

- SHS Priority #2, Osceola County
- U.S. 17/92 (John Young Parkway), from Pleasant Hill Road to Portage Street
- Right-of-way funded in FYs 22/23 to 26/27
- Funding in Tentative Work Program: \$46,499,534



## FM# 437200-1:

- SHS Priority #4, Osceola County
- U.S. 17/92, from C.R. 54 to west of Poinciana Boulevard
- Design funded in FY 25/26
- Funding in Tentative Work Program: \$7,000,000



# KEY PROJECTS – Bike/Ped

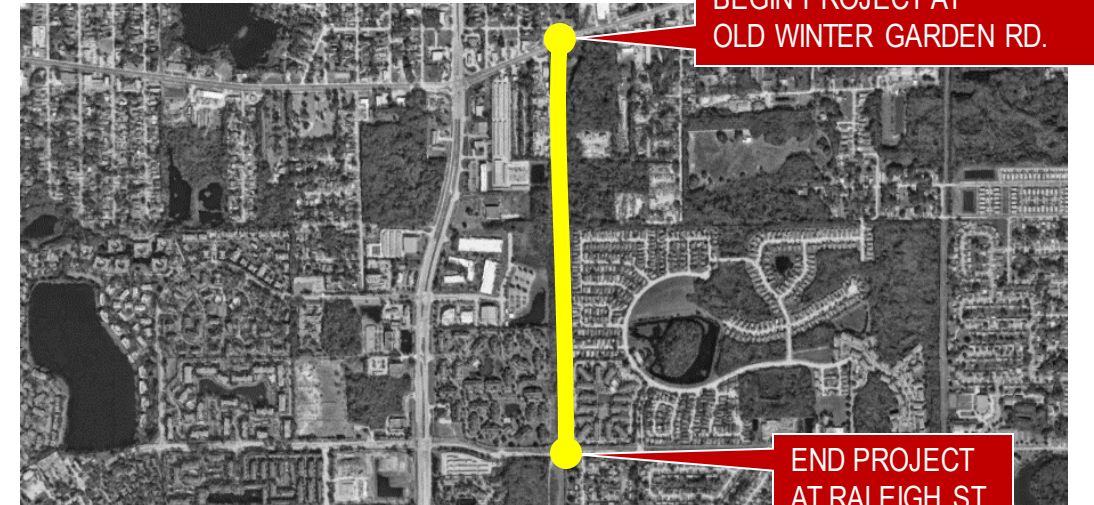
## FM# 444993-1:

- Bike/Pedestrian Priority #3, Orange County
- Little Econ Trail Phase 3, from Baldwin Park Street to Richard Crotty Parkway
- Right of Way funded in FY 23/24 and Construction funded in FY 25/26
- Funding in Tentative Work Program: \$11,096,000



## FM# 448756-1:

- Bike/Pedestrian Priority #4, Orange County
- Shingle Creek - Kirkman Trail, from Old Winter Garden Road to Raleigh Street
- Construction funded in FY 24/25
- Funding in Tentative Work Program: \$2,211,400

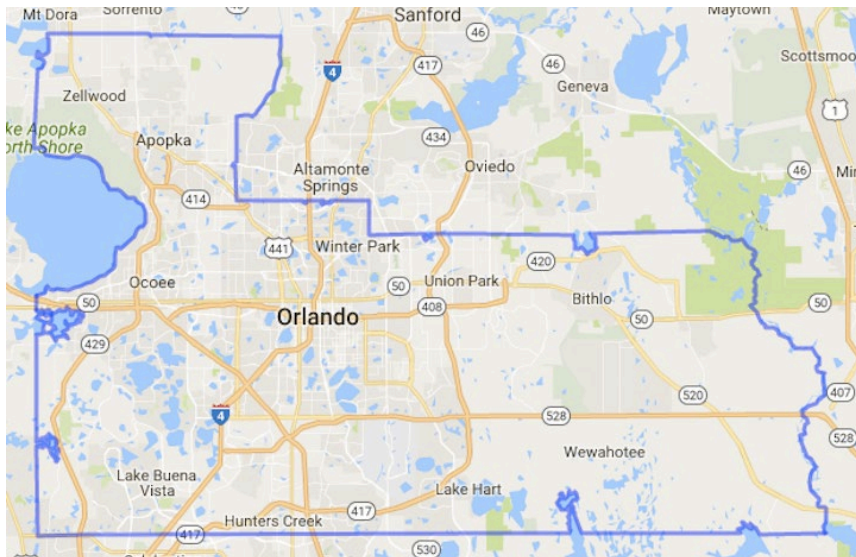




# KEY PROJECTS – Multimodal

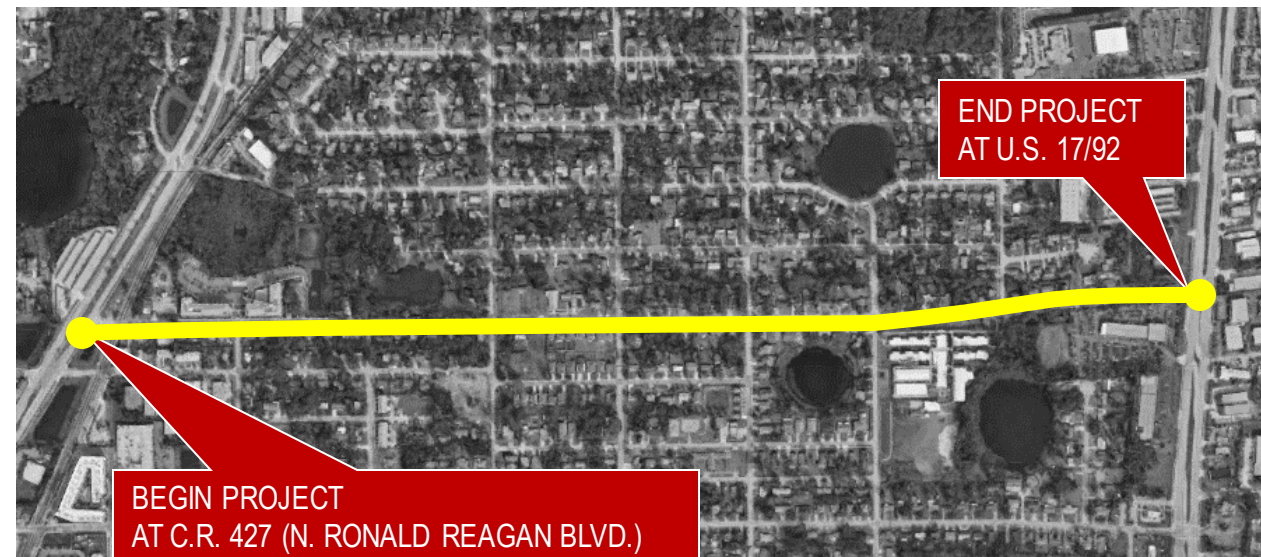
## FM# 447388-1:

- TSM&O Priority #2, Orange County
- UPS Expansion Phase 1
- Construction funded in FY 23/24
- Funding in Tentative Work Program: \$775,200



## FM# 446903-1:

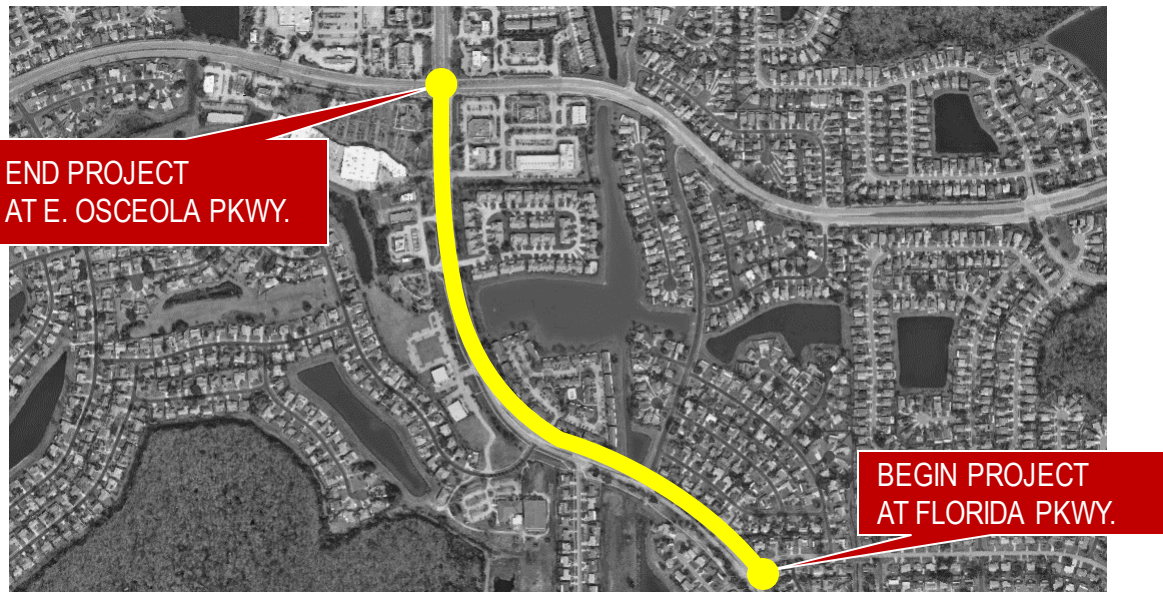
- Complete Streets Priority #4, Seminole County
- East Church Avenue, from N. Ronald Reagan Boulevard to U.S. 17/92
- Construction funded in FY 24/25
- Funding in Tentative Work Program: \$963,074



# KEY PROJECTS – Multimodal

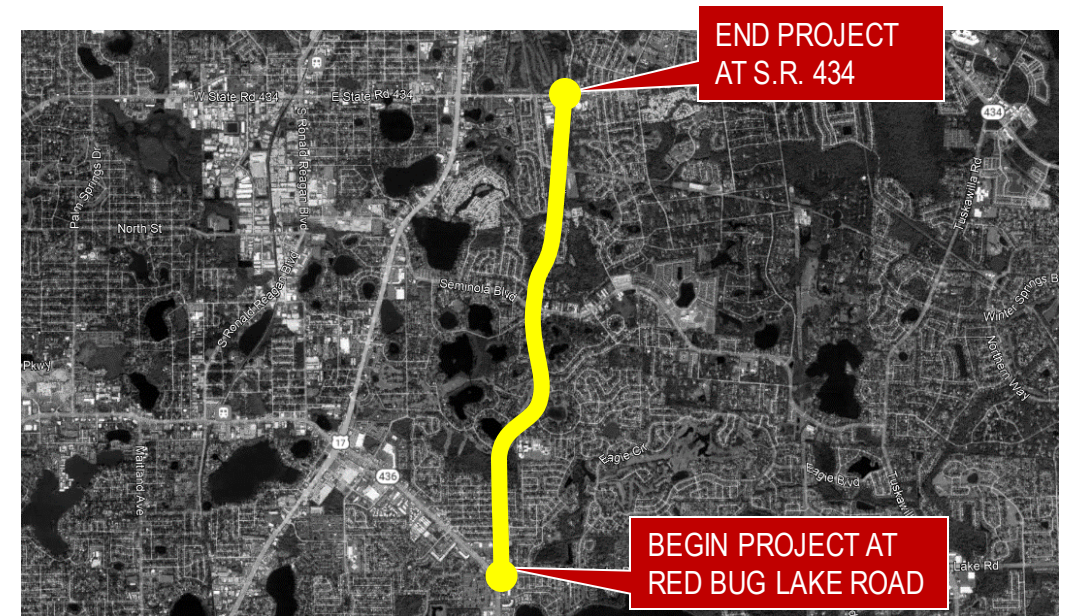
## FM# 447602-1:

- Complete Streets Priority #8, Osceola County
- Buenaventura Boulevard, from Florida Parkway to E. Osceola Parkway
- Design funded in FY 22/23 and Construction funded in FY 24/25
- Funding in Tentative Work Program: \$13,935,513



## FM# 446493-1:

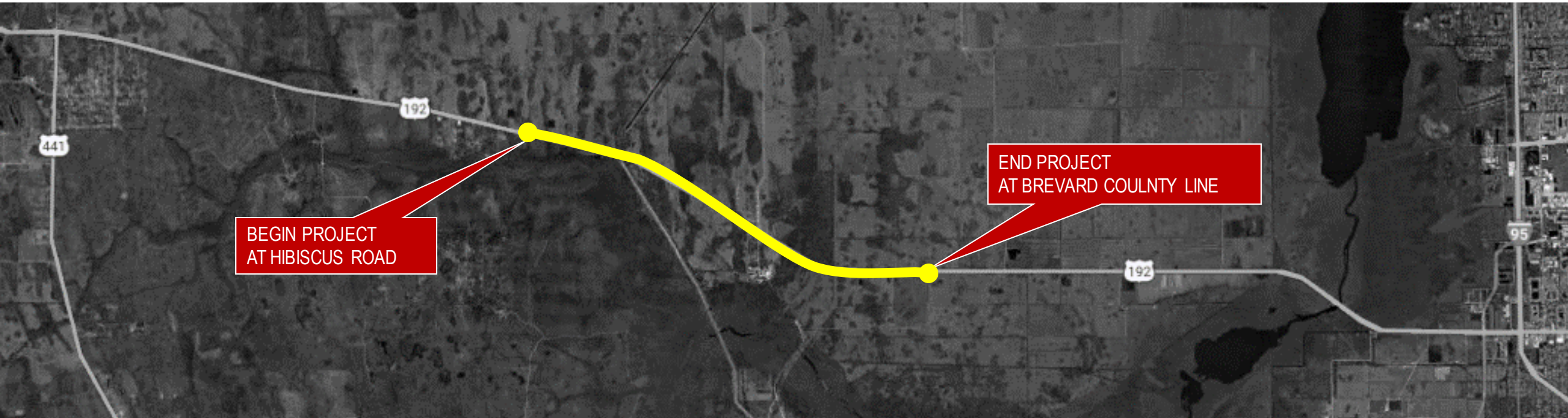
- Complete Streets Priority #10, Seminole County
- Winter Park Drive, from Red Bug Lake Road to S.R. 434
- Design funded in FY 25/26
- Funding in Tentative Work Program: \$870,000





# ADVANCES

- **FM# 447099-1 (Osceola County):**
  - SR 500 (U.S. 192) resurfacing, from Hibiscus Road to Brevard County Line
  - Construction advanced from FY 23/24 to FY 22/23
  - Due to lane mile targets.



# DEFERRALS

- **FM# 239203-7 (Orange County):**
  - SR 50, east of Old Cheney Highway to Chuluota Road
  - Construction deferred from FY 23/24 to FY 26/27 and Construction Support deferred from FY 24/25 to FY 26/27, based on availability of funding.
- **FM# 239422-1 (Orange County):**
  - SR 434 / Forest City Road, from SR 424 / Edgewater Drive to Seminole County Line
  - Construction deferred from FY 22/23 to FY 26/27, based on availability of funding.
- **FM# 437131-1 (Orange County):**
  - SR 50 / SR 600 / U.S. 17-92, from Irvington Avenue to Maguire Boulevard drainage improvements
  - Construction deferred from FY 22/23 to FY 24/25 to assess the right-of-way needs for drainage improvements.
- **FM# 445691-1 (Orange County):**
  - SR 527, from Clay Avenue to S. Orlando Avenue safety project
  - Construction deferred from FY 22/23 to FY 23/24, based on availability of funding.
- **FM# 445772-1 (Orange County):**
  - SR 500 at Clarcona Ocoee Road
  - Construction deferred from FY 22/23 to FY 25/26, based on availability of funding.



# DELETIONS

## ORANGE

- **FM# 444644-1:**
  - Woodbury Road at Golfway Boulevard intersection improvements
  - Construction deleted from FY 23/24, as requested by the County and the MPO.
- **FM# 444645-1:**
  - Texas Avenue at Rio Grand Avenue intersection improvements
  - Construction deleted from FY 23/24, as requested.
- **FM# 446894-1:**
  - Rouse Road at University Boulevard intersection improvements
  - Construction deleted from FY 24/25, as requested.
- **FM# 435521-1:**
  - St. Andrew's Trail, from Cady Way Trail to Aloma Avenue
  - Construction Support deleted from FY 22/23. Reassigned to 435521-2 in FY22/23 to accommodate use of Department contract.
- **FM# 443395-1:**
  - Aloma and Hungerford Elementary School Sidewalk Gaps (Safe Routes to School)
  - Design deleted from FY 22/23. Design reassigned to 443395-2 in FY22/23 to accommodate use of Department contract.



# DELETIONS

## OSCEOLA

- **FM# 437932-1-38-01:**
  - Central Avenue, from Dankin Avenue at Church Street to W. Donegan Avenue
  - Design deleted from FY 24/25 and reassigned to 437932-2 to revise the work mix following the study.
  
- **FM# 444645-1:**
  - Shingle Creek Trail Phase 2A, from John Young Parkway to Pleasant Hill Road
  - Construction Support deleted from FY 22/23 and reassigned to 442334-2 in FY 22/23 to accommodate use of Department contract.

## SEMINOLE

- **FM# 439064-1:**
  - Southcot Drive Sidewalk, from Sunset Drive to Lake Triplett Drive
  - Construction support deleted from FY 22/23 and reassigned to 439064-2 in FY 22/23 to accommodate use of Department contract.
  
- **FM# 448738-1:**
  - Orange Boulevard, from SR 46 to Monroe Road
  - Construction deleted from FY 25/26, as requested by the County and the MPO.



# MOVED OUT

- **FM# 239203-8 (Orange County) :**
  - SR 50, Chuluota Road to SR 520
  - Construction moved out from FY 24/25.
  - Based on availability of funding.

# THANK YOU

Katherine Alexander  
Program Management Administrator

**Contact:**

Phone: (386) 943-5168

Email: [Katherine.Alexander@dot.state.fl.us](mailto:Katherine.Alexander@dot.state.fl.us)

**Alternate Email:** [D5-WPPH@dot.state.fl.us](mailto:D5-WPPH@dot.state.fl.us)

**Website:** [www.fdot.gov/wpph/district5](http://www.fdot.gov/wpph/district5)

