

# Welcome!

Community & Environment  
August 21, 2025



Today's webinar will begin shortly.

# Journey to 2050

Community & Environment

August 21, 2025



# Our host and presenters



Leilani Vaiaoga  
Communications  
Specialist  
Host



Sarah Larsen  
Transportation Planner  
Health & Housing Presenter



Jason Sartorio, AICP  
Transportation Planner  
Environment &  
Resilience Presenter



Taylor Laurent, PE, AICP  
Manager, Transportation Planning  
2050 MTP Project Manager  
Q & A





# Who is MetroPlan Orlando?

- We **lead** transportation planning efforts in Orange, Osceola, and Seminole counties.
- We **bring together** local leaders.
- We **prioritize** federal and state transportation dollars.



# What is the 2050 MTP?



# Presentation Overview

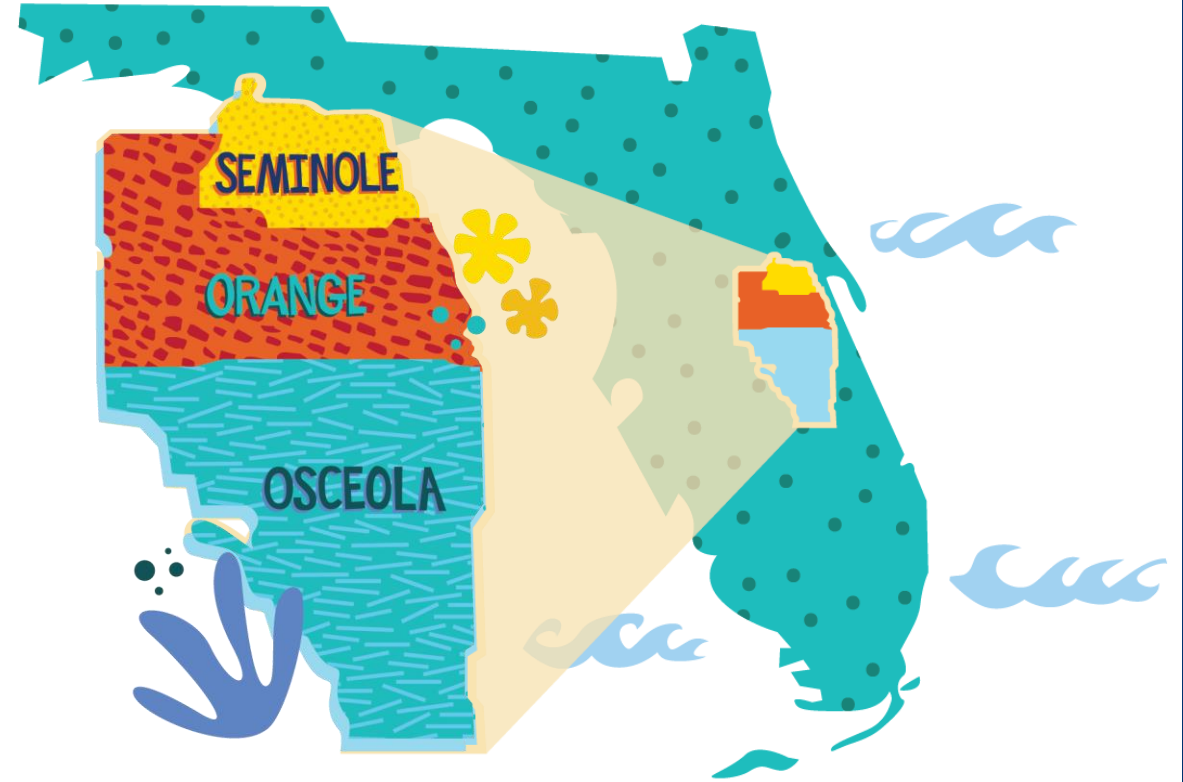
- Community
  - Health
  - Housing
- Environment
  - Resilience
- Q&A

# Journey to 2050



# Health

Sarah Larsen, MetroPlan Orlando



# History of Health Planning

2016

- SR 50 Health Impact Assessment
- Health in Transportation Planning Audit

2018

- Federal grants to develop health-related White Papers

Ongoing

- Increased partnerships with Florida Department of Health's local offices





# 2022 Health Strategic Plan

- Evidence-based Framework for leveraging transportation strategies to improve key health outcomes
- Created a health-specific vision for planning activities.



## Health Strategic Plan



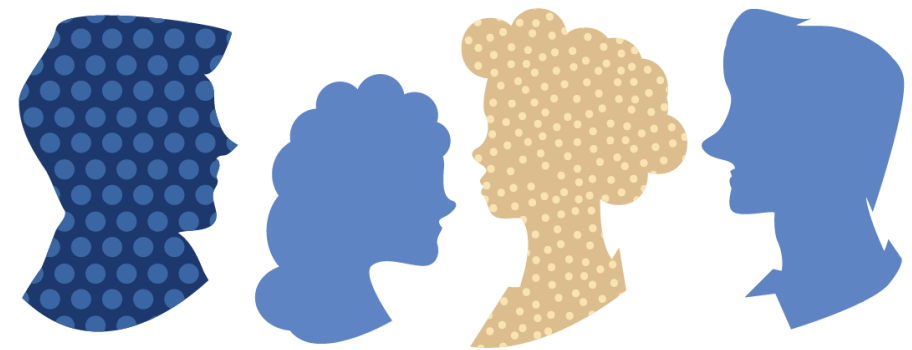
Supporting a diversity of trips and modes of travel that aid in the achievement of diverse community health goals.

January 2022



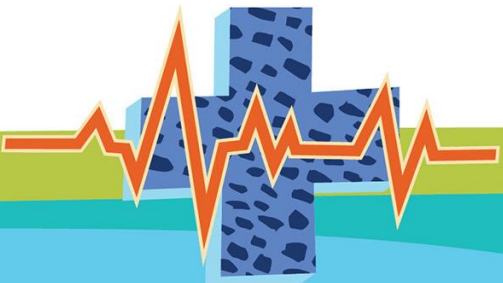
# Integrating Health into the 2050 MTP

- Review of the 2022 Health Strategic Plan
- Additional Literature Review
- Stakeholder Engagement



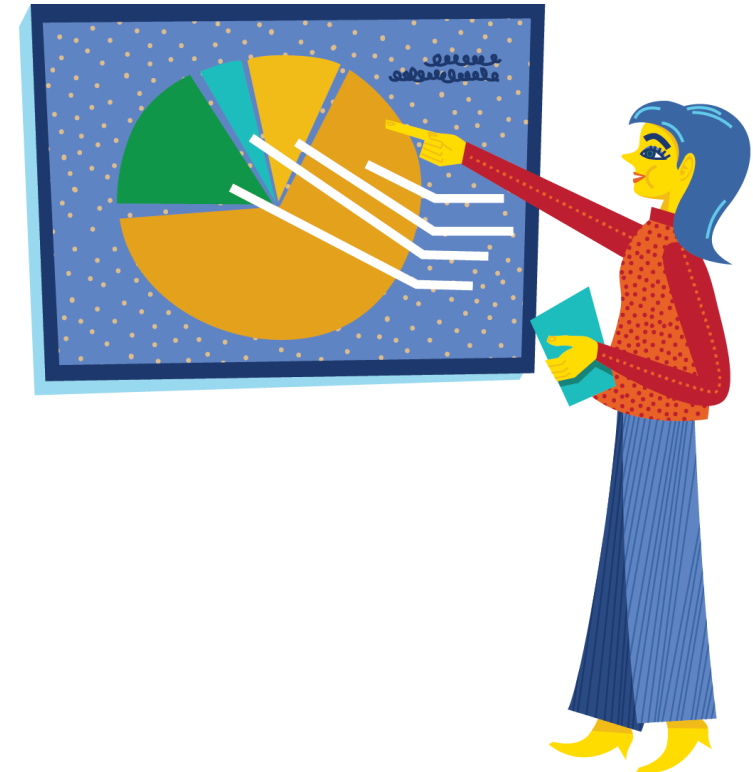
# Partnerships

- American Lung Association
- American Heart Association
- City of Orlando
- Health Council of East Central Florida
- Florida Department of Health (Orange, Osceola, and Seminole County offices)
- Well Florida Council
- Osceola County Chamber of Commerce



# Existing Conditions

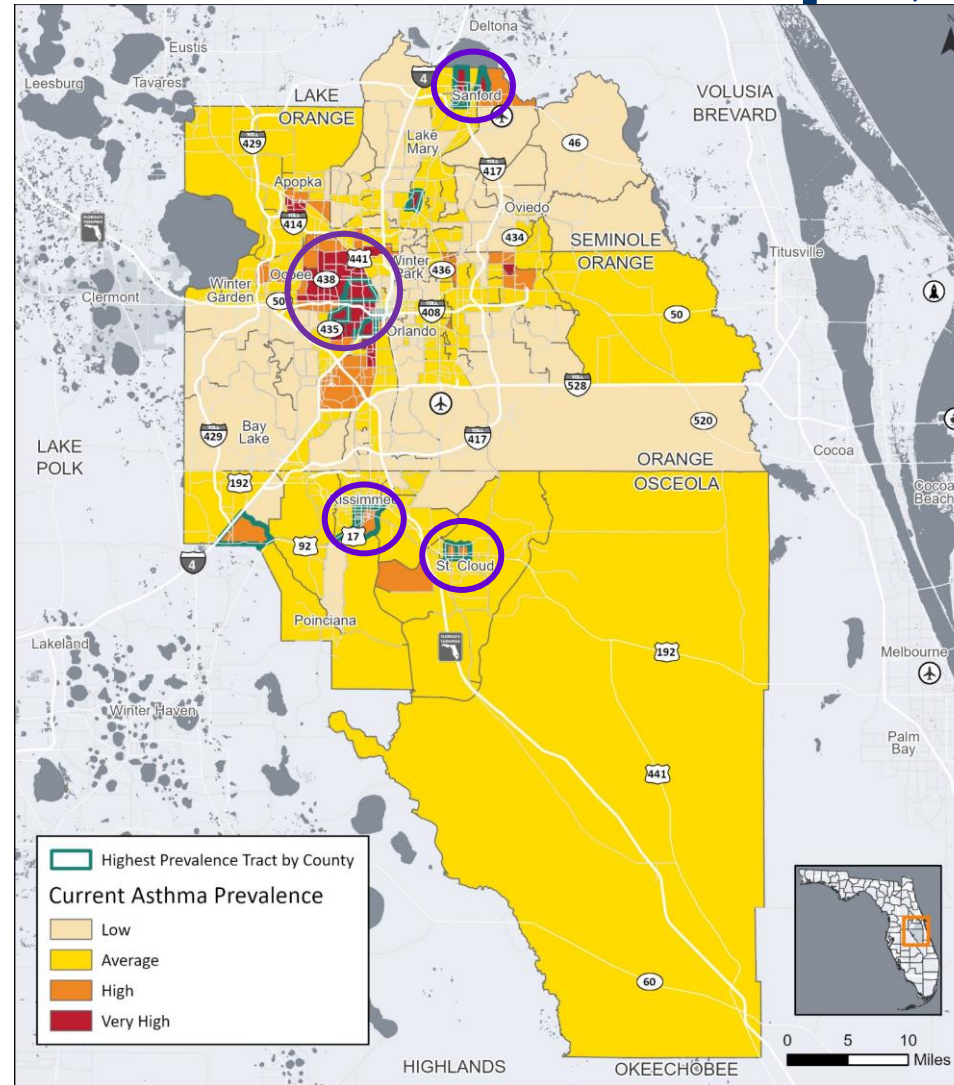
- Health Indicator Data for Several Chronic Diseases
  - High Blood Pressure
  - Asthma
  - Coronary Heart Disease
  - Diabetes
  - Obesity
  - High Cholesterol







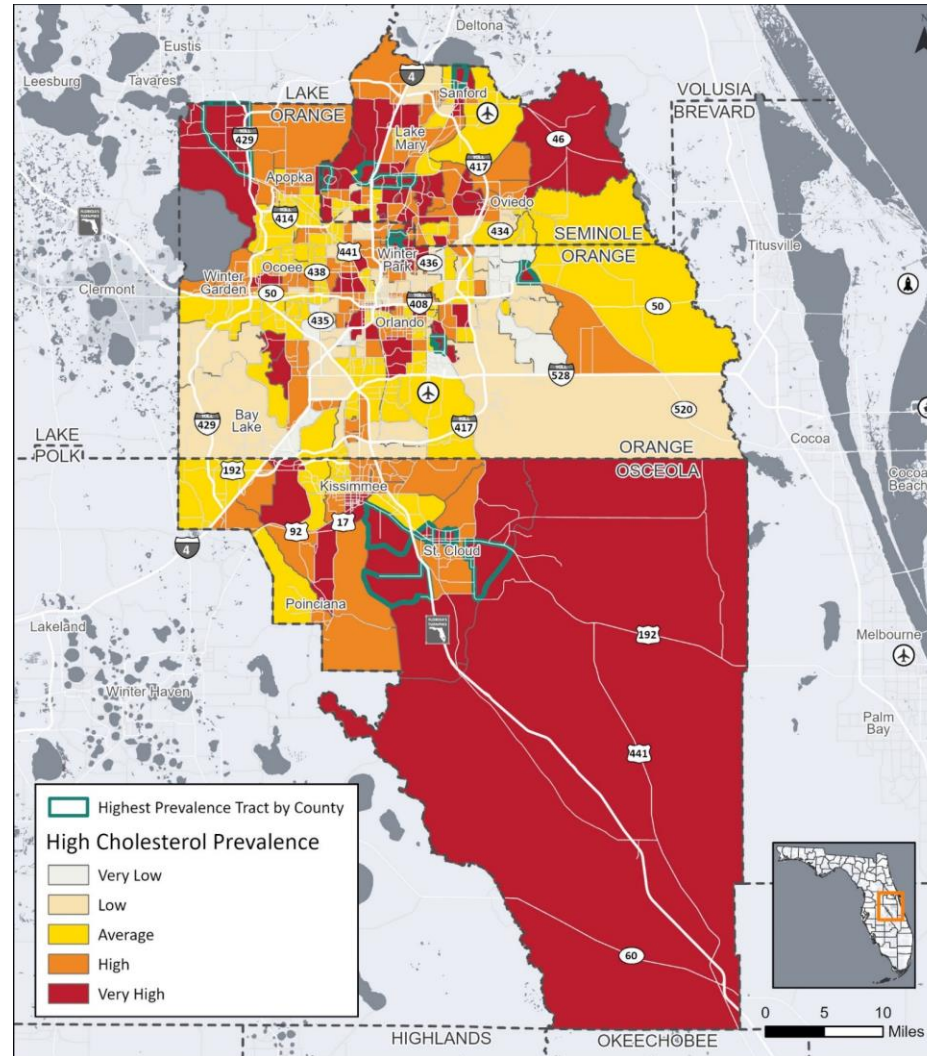
# Example Prevalence Map (Asthma)



Source: CDC PLACES data, VHB's Healthy Mobility Model, 2024.



# High Cholesterol



Source: CDC PLACES data, VHB's Healthy Mobility Model, 2024.

# Health Goals in the 2050 MTP

1. Supporting Healthy Lifestyles
2. Implementing Healthy Transportation Infrastructure
3. Providing a Safe Transportation System
4. Improving Health Care Access Through Transportation
5. Integrating Community Health into Transportation Decision Making



# Goal 1: Supporting Healthy Lifestyles

## Desired Outcomes:

- More active transportation
- Increased access to recreation
- Increased access to nutritious foods
- Additional community engagement





## Goal 2: Implementing Healthy Transportation Infrastructure

### Desired Outcomes:

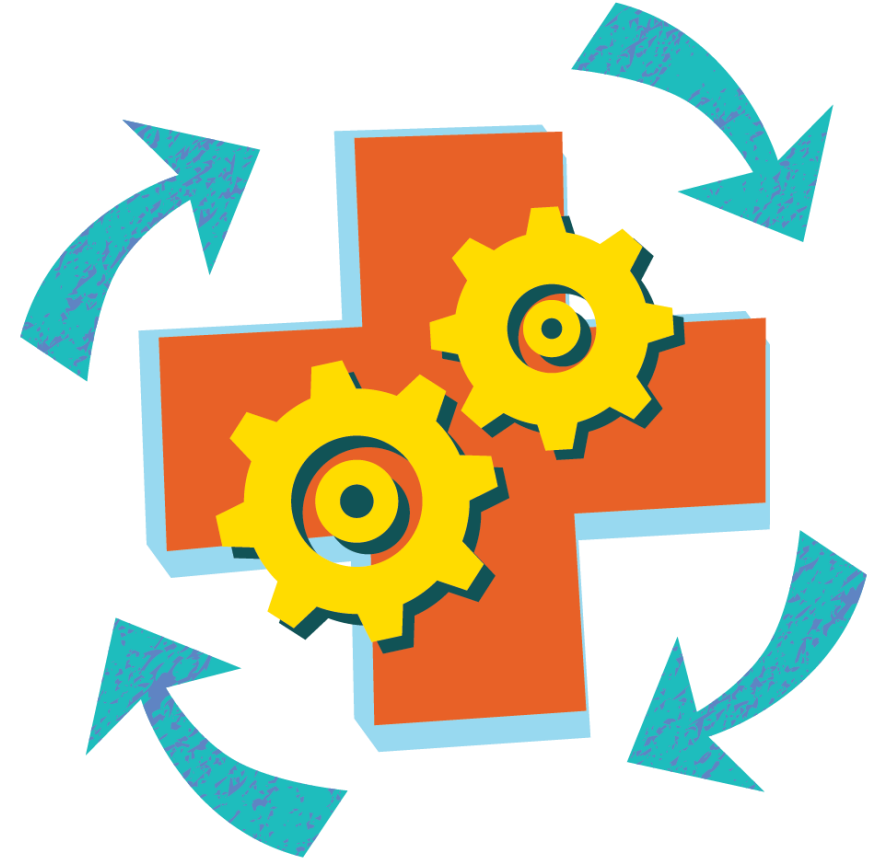
- Reduce exposure to transportation-related air and noise pollution
- Mitigate heat exposure and heat-related illness for users of the transportation system



## Goal 3: Providing a Safe Transportation System

### Desired Outcomes:

- Reduce the number of motor-vehicle crashes
- Reduce the number of pedestrian and cycling injuries
- Plan with crime reduction strategies in mind



# Goal 4: Improving Health Care Access Through Transportation

## Desired Outcomes:

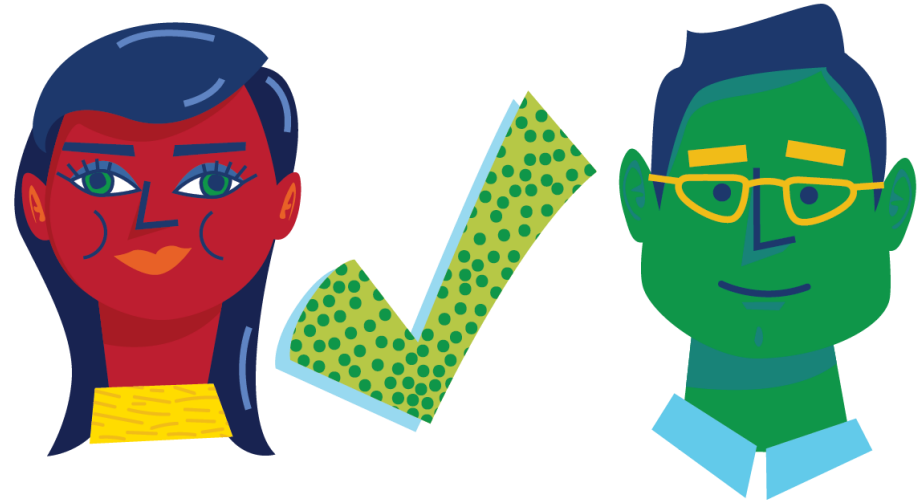
- Access to primary health care services and routine preventive care
- Access to mental health services
- Access to dental care services



# Goal 5: Integrating Community Health into Transportation Decision Making

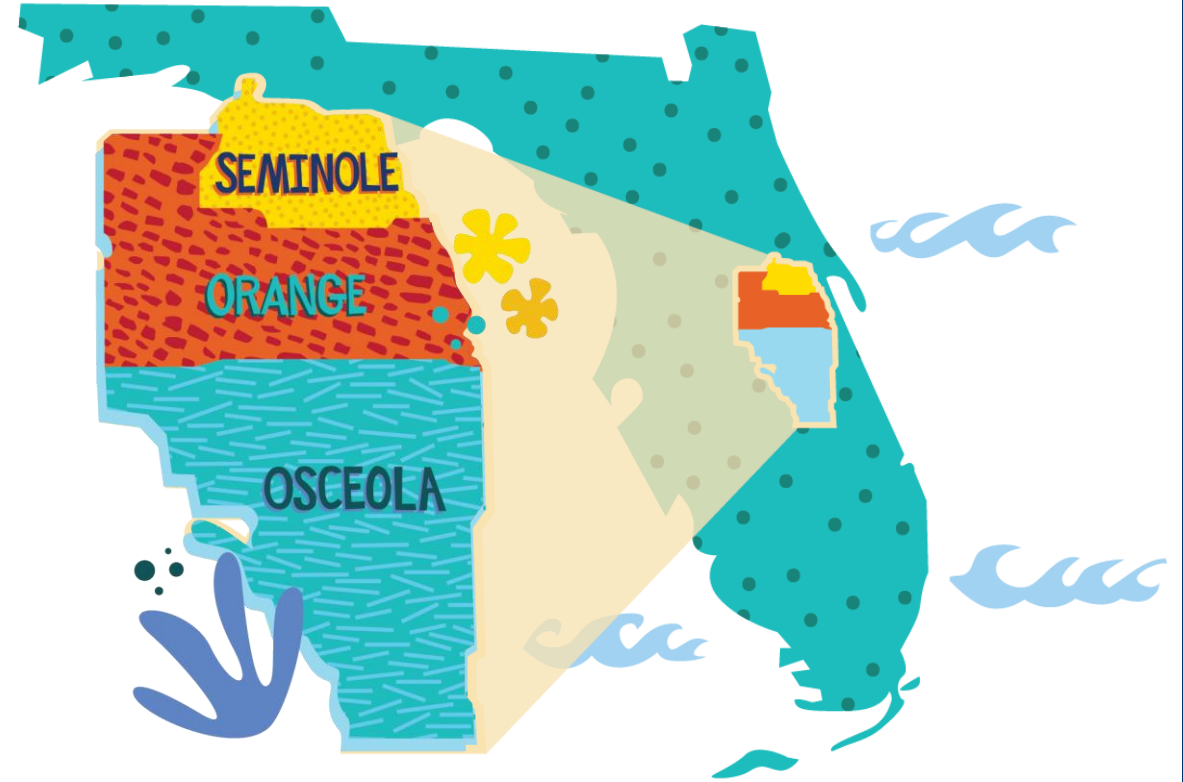
## Desired Outcomes:

- Provide a transportation system that serves the full community's transportation and health needs



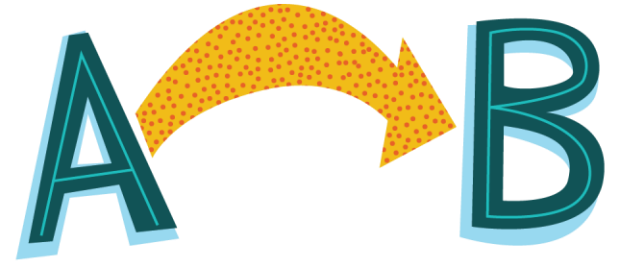


# Housing



# Linking Housing and Transportation in the 2050 MTP

- Where we live impacts our transportation patterns
- Longer commutes = increased congestion and higher costs
- First time Housing is included in the long range planning process



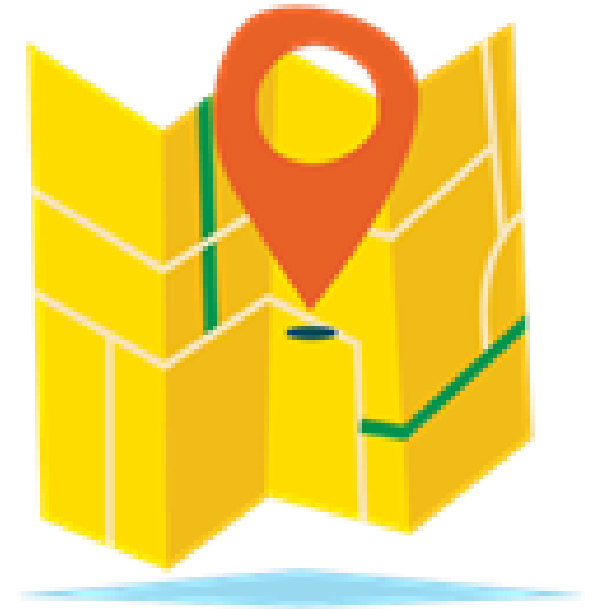
# Housing Coordination Process

- Stakeholder Engagement
  - City of Orlando
  - AARP Florida
  - Shimberg Center for Housing Studies
  - Osceola County
  - Florida Housing Coalition
  - East Central Florida Regional Planning Council



# What We Learned

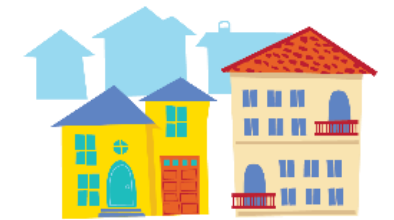
- Impacts of high housing costs
- Opportunity to coordinate housing and transportation investments
- Affordable housing near transit and/or jobs
- Plan with transportation-dependent in mind





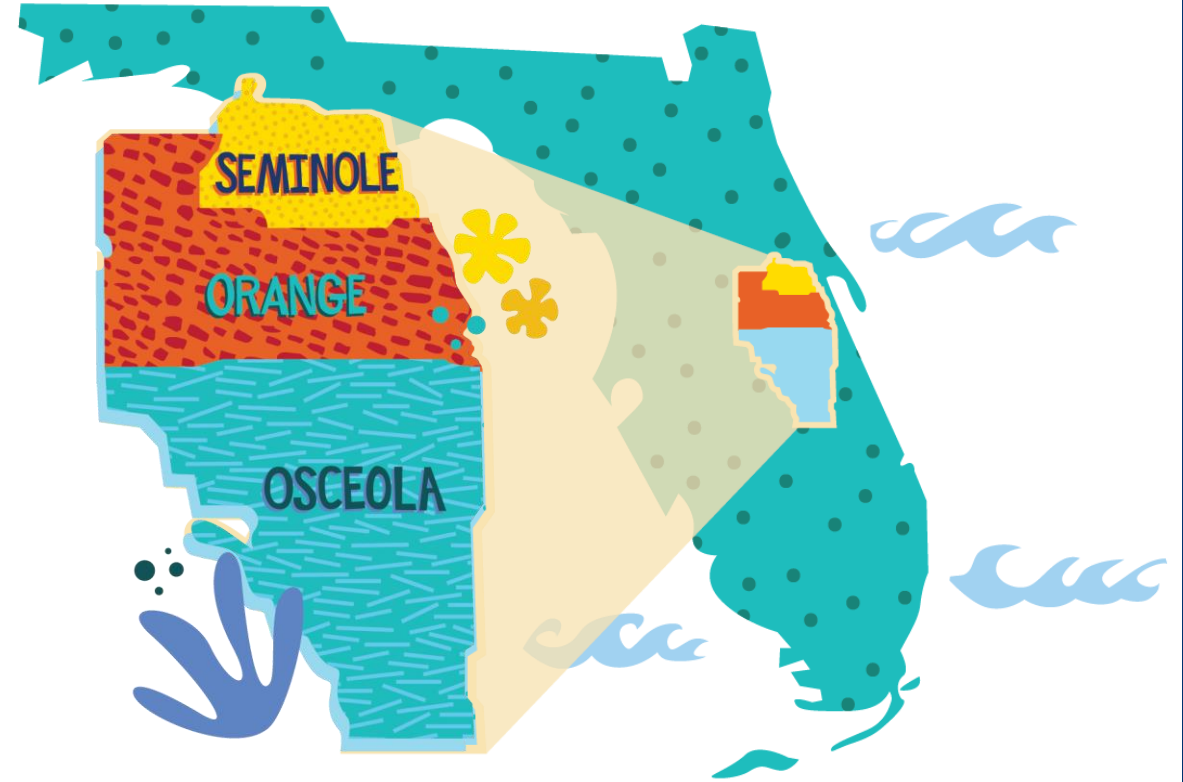
# Desired Outcomes

- Context-Sensitive Transportation and Land Use Planning
- Strong and Dynamic Regional and Local Housing Markets
- Inclusive Regional and Local Housing Markets
- A Housing-First Path to Ending Homelessness
- Development Form Standards Which Advance Shared Priorities



# Environment

Jason Sartorio, MetroPlan Orlando



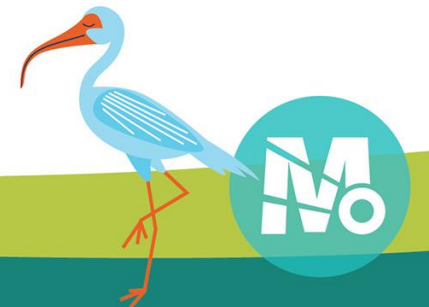
# Existing Environmental Conditions

- Data Collection
  - 61 GIS databases from local, state, federal agencies
  - Identify environmental resources of regional importance or value
- Important Environmental Resources and Features
  - Conservation Lands
  - Florida Wildlife Corridor
  - Wetlands, Lakes and Rivers
  - Endangered Species and their Habitats
  - Floodplains
  - Farmlands
  - Aquifer Recharge Areas



# Conservation Lands

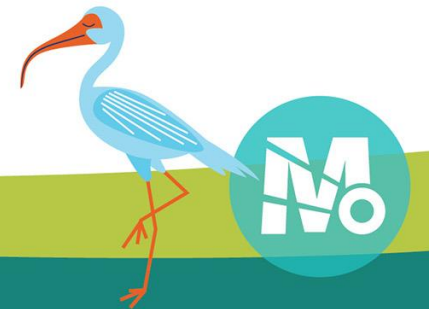
- Include local, state and federal parks, wildlife conservation areas, preserves, mitigation banks and conservation easements





# Special Designated Areas

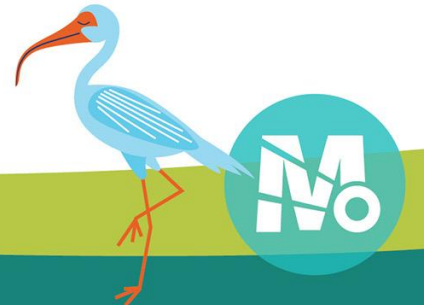
- Florida Wildlife Corridor
  - 17.7-million contiguous acres
  - Critical Link





# Wetlands

- Wetlands represent nearly 28% of the region



# Federally Protected Species

- 24 federally protected species
- Designated critical habitat for two species
- Consultation area for seven species





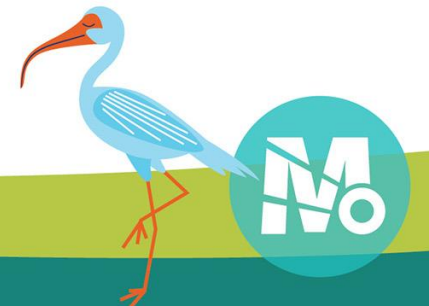
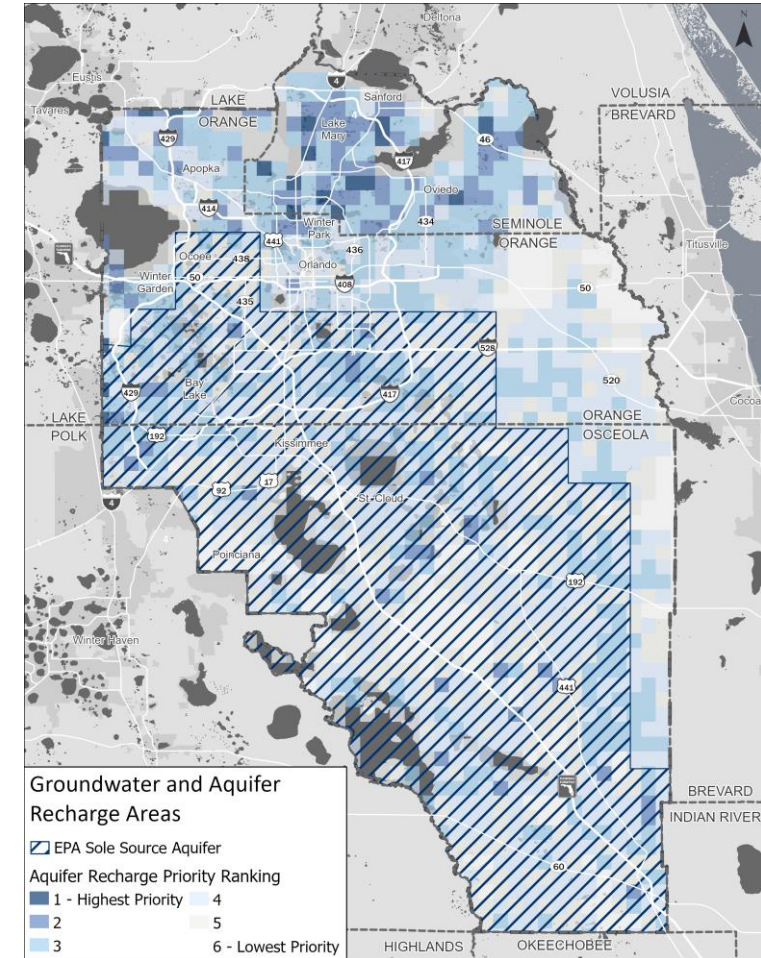
# State Protected Species

- 5 Animal species
- 73 Plant species



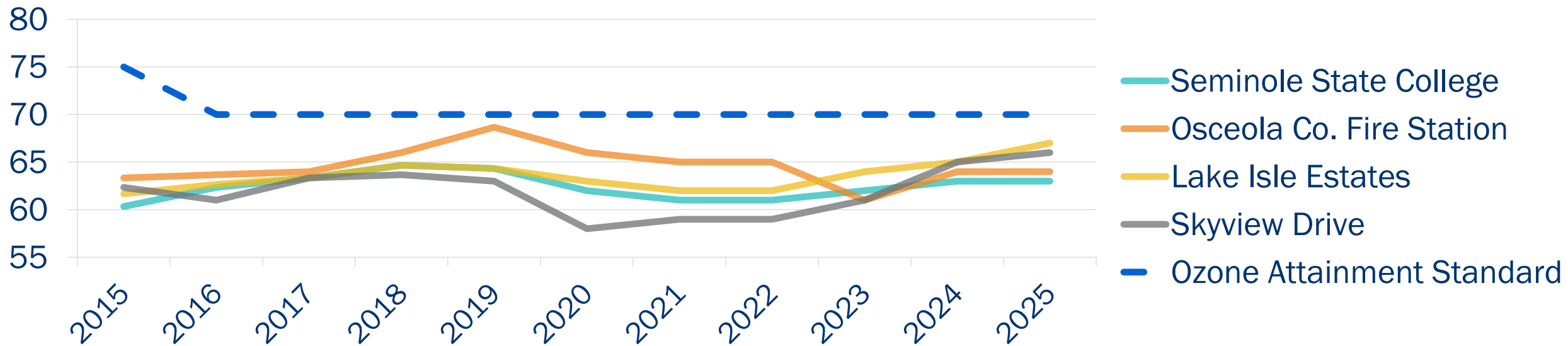
# Aquifers

- Recharge and discharge areas
  - The Floridian Aquifer
  - Biscayne Sole Source Aquifer (SSA)



# Air Quality

- Current air quality standard = 70 parts per billion (ppb)
- Central Florida = 60-62ppb (**in attainment**)



Source: Florida Department of Environmental Protection (August 2025)





# Agency Coordination

- Objectives

- Share information and gathering effort
- Identify potential additional sources of information

- Agency Input/Findings

- Conservation easement impacts
- Wetland mitigation
- Proposed new species
- Regional growth and urban sprawl



US Army Corps  
of Engineers.



# Environmental Screening of Candidate Projects

- MPO pre-screening transportation project recommendations
- FDOT Efficient Transportation Decision Making (ETDM) Environmental Screening Tool (EST) data



# Environmental Stewardship Strategies



**Minimize/Mitigate  
Environmental  
Resource Impacts**



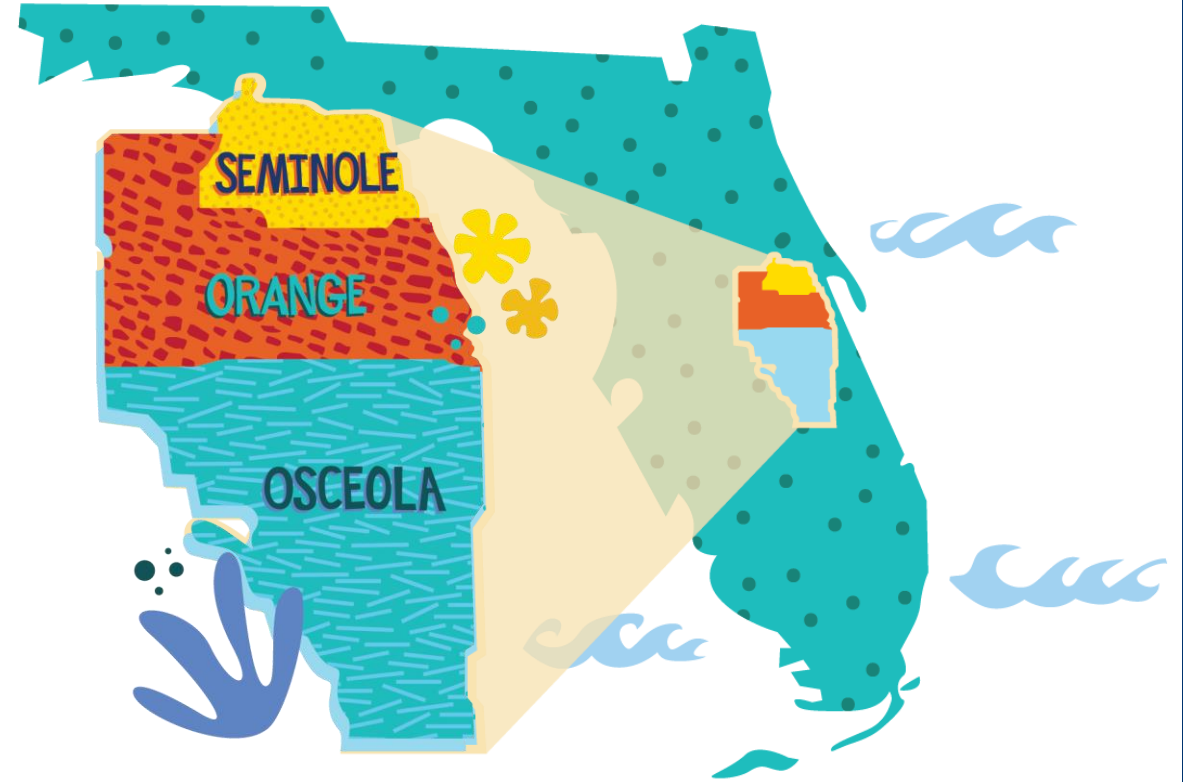
**Inform the 2050 MTP**



**Encourage  
Multimodal Travel**



# Resilience





# What is a Resilience Strategy?

- An assessment of risk from environmental factors
- Identify at-risk infrastructure
- Adopt measures to protect these assets





# What are some of our risks?

- Hazards
  - Floods
  - Extreme heat
  - Tropical storms and hurricanes
- Shocks
  - Sudden, impactful events
- Stressors
  - Long-term pressures on a system

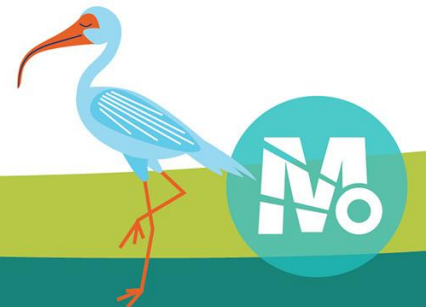


# Assessing our Risk

- Understanding our exposure
- Ability to adapt

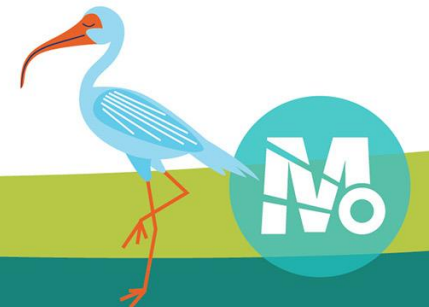


YOU ARE HERE



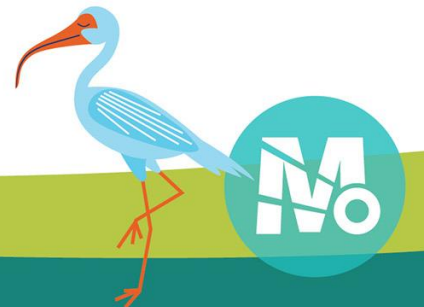
# Assessment of Transportation Infrastructure

- Focused on connections to:
  - Airports
  - Hospitals
  - Healthcare facilities (ambulatory only)
  - Emergency operations centers
  - Police departments
  - Power plants



# Composite Risk Assessment

- Identifies critical corridors and environmental risks
- Recommendations developed as part of the 2050 MTP





Q&A





# Upcoming Webinar

September 11, 2025 | Multimodal Needs Assessment

*View past webinars on YouTube: @metroplan\_orlando*

Join our Email List at [MetroPlanOrlando.gov](https://MetroPlanOrlando.gov)





# Thank you for attending

Taylor Laurent, 2050 MTP Project Manager  
[MTP@MetroPlanOrlando.gov](mailto:MTP@MetroPlanOrlando.gov)

