

# Municipal Advisory Committee

September 2, 2021



- I. Call to Order and Pledge of Allegiance
- II. Chairman's Comments
- III. Agenda Review
- IV. Roll Call and Confirmation of Quorum
- V. Public Comments on Action Items
- VI. Agency Reports
- VII. Action Items
- VIII. Presentations and Status Reports**
- IX. General Information
- X. Upcoming Meetings
- XI. Member Comments
- XII. Public Comments
- XIII. Adjournment



# AGENDA

# 2021 Regional Transportation Survey

In partnership with:



# Survey Details



**RESPONDENTS**  
3,055 Total



**SURVEY OPEN**  
4/28/21 – 6/1/21

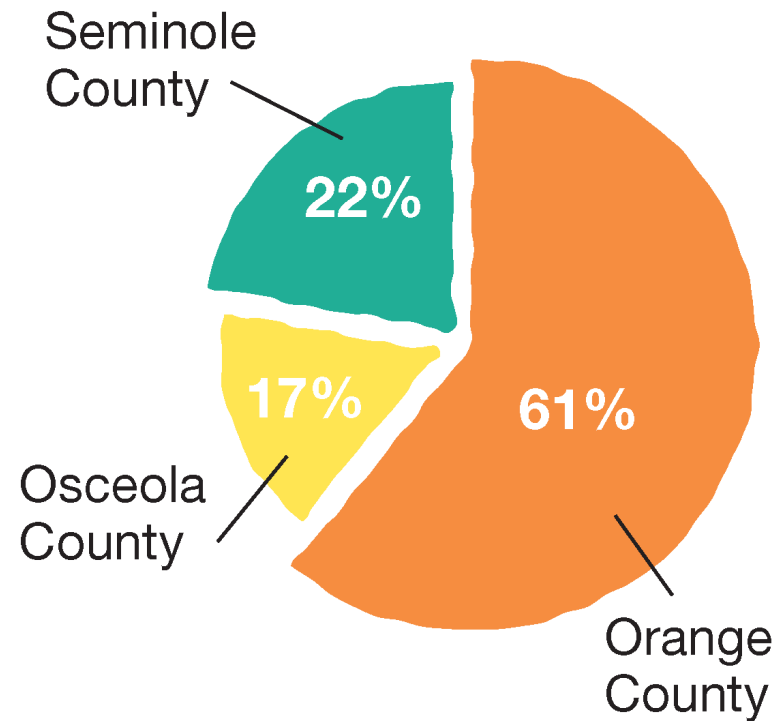


**METHODS**  
Online Panel (1,825)  
Public Survey (1,230)



**LANGUAGES**  
English & Spanish

## GEOGRAPHY





# Community Outreach



- ✓ **20** Local Governments
- ✓ **11** Transportation & Planning Orgs
- ✓ **10+** Local Businesses & Chambers
- ✓ **31** Community, Non-profit & Health Orgs

**MetroPlan Orlando** @MetroPlan\_Orl · May 18

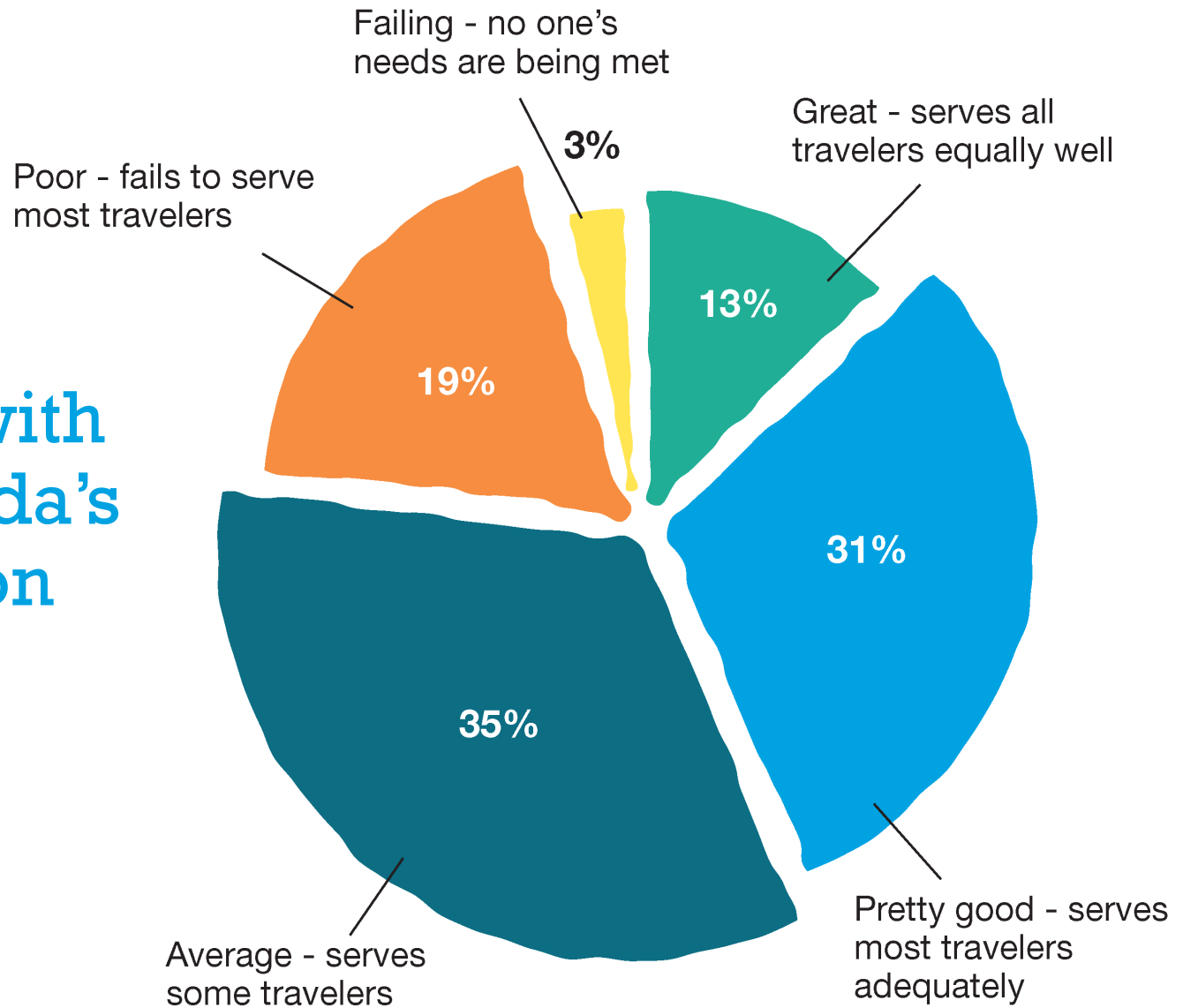
Did you know @OsceolaLibrary, @SeminoleLibrary and @ocslibrary have wonderful resources? Use a computer at your local branch to take our #transportation survey or pick up a paper copy and fill one out!  
[bit.ly/mposurvey21](http://bit.ly/mposurvey21)

The video thumbnail shows a car driving on a road with three teal call-to-action boxes: "VISIT YOUR LOCAL LIBRARY", "TAKE THE SURVEY", and "HELP MOVE TRANSPORTATION AHEAD". A red banner at the bottom says "LAST CHANCE: MAY 23" with a timer at "0:02" and "174 views".

0:02 174 views

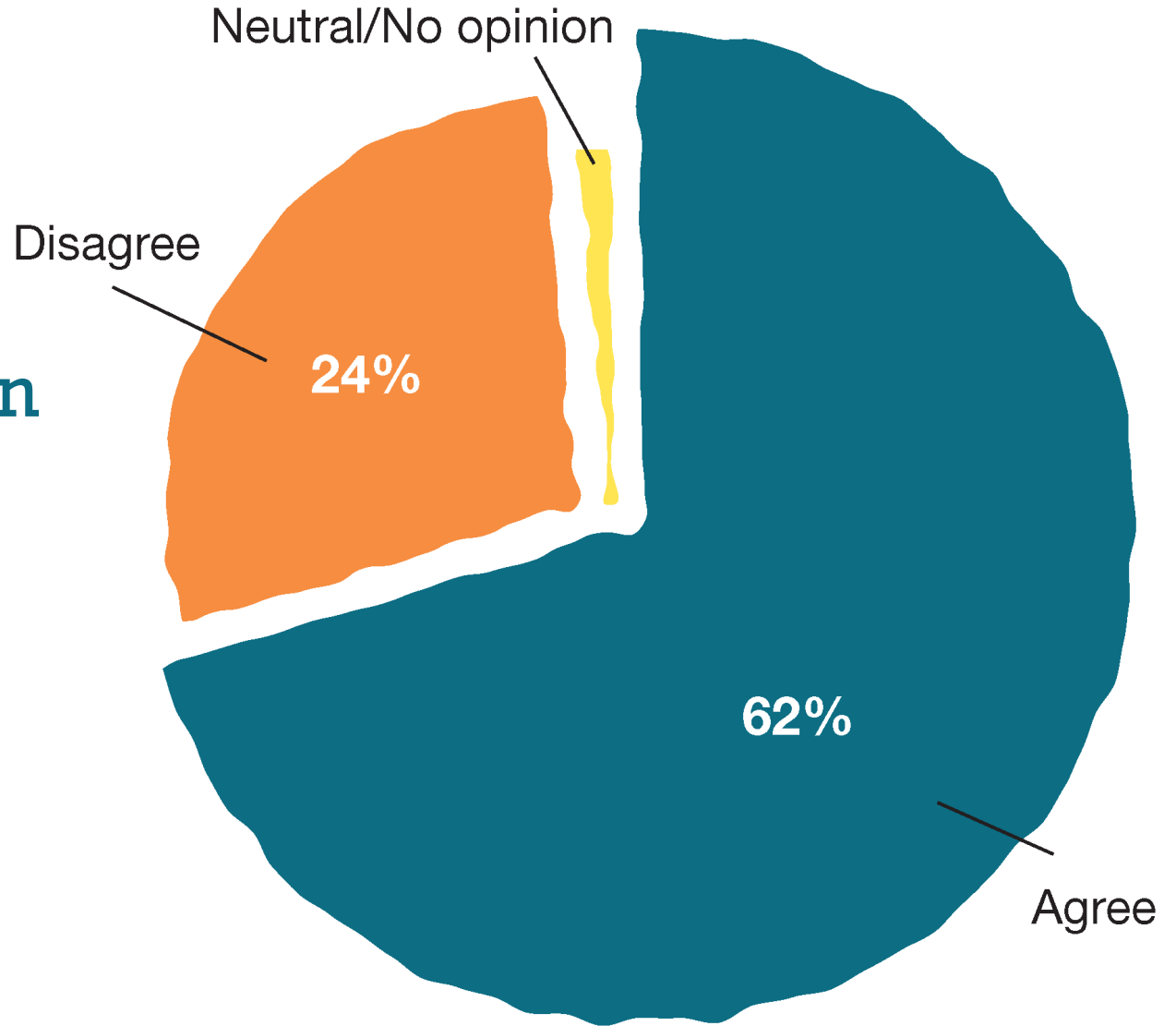
7 7

# Satisfaction with Central Florida's Transportation System

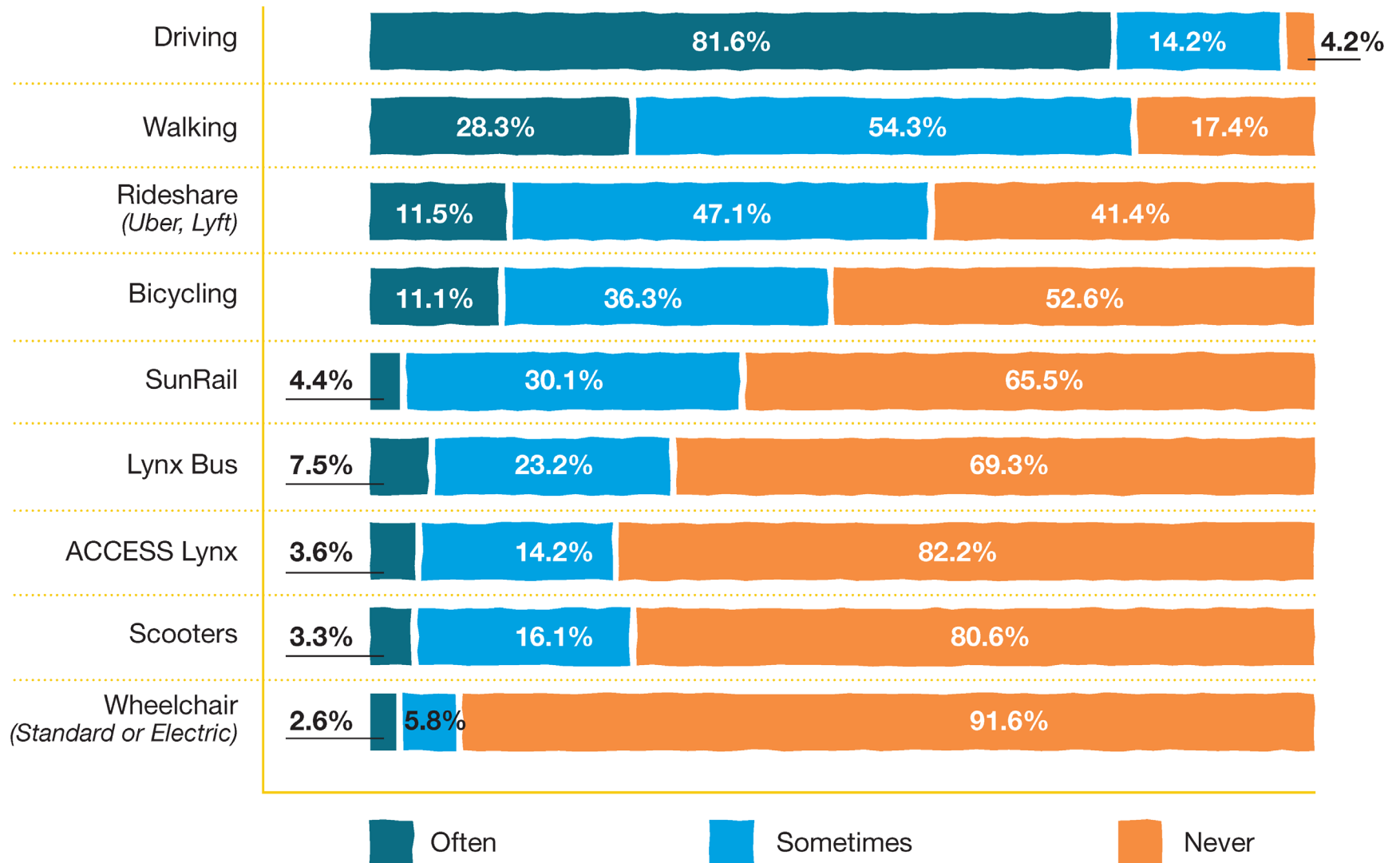


Agree or  
Disagree:

Improving  
Transportation  
Means  
Increasing  
Taxes & Fees



# How Respondents Get Around



# Top Challenges

## PEDESTRIANS

36% - don't feel safe due to drivers

36% - not enough sidewalks

27% - "walk" signal takes too long



## BICYCLISTS

52% - don't feel safe sharing road

43% - weather

40% - not enough bike facilities





# Unsafe Driver Behavior

**79%**

Understand speed & safety are closely related

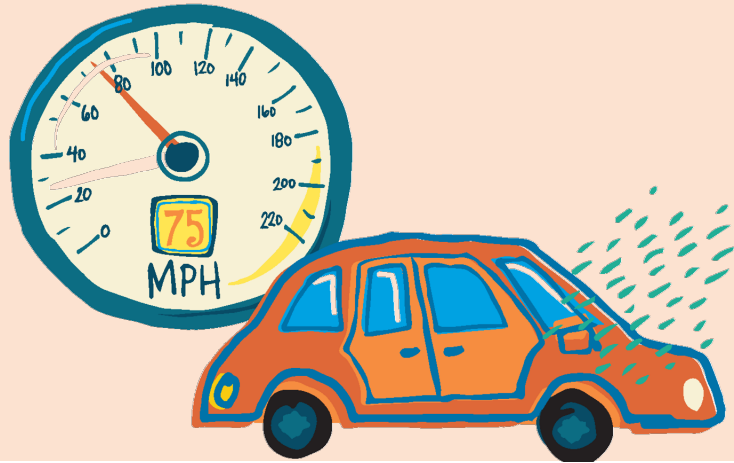
**33%**

OK to speed when roads are clear

**12%**

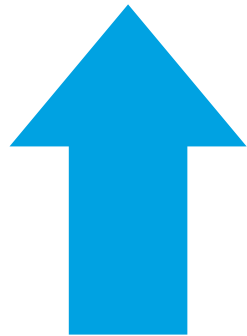
OK to text while driving

# Risky Drivers



19%

admitted to routinely driving  
10-25 mph over the speed limit



9% More “close calls”

16% More agree it’s OK to text & drive

35% More feel it is OK to speed

# Public Transportation: What Do People Want?

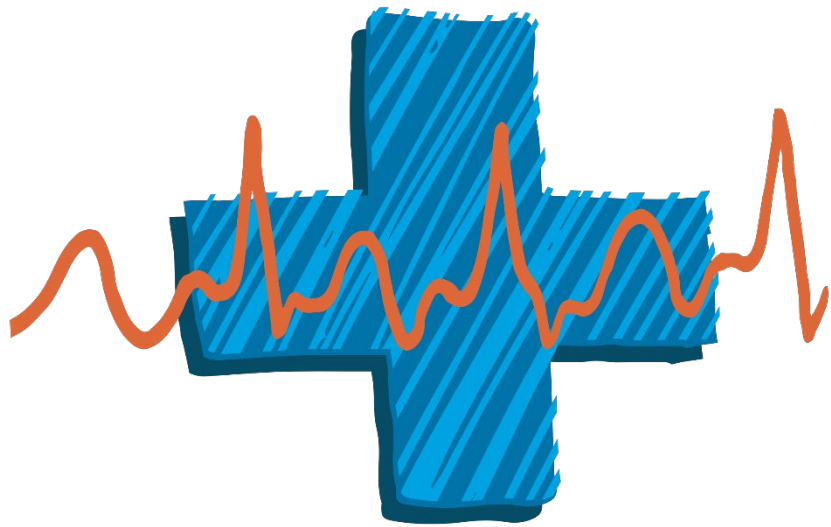
More Frequent  
Service

+

Access to  
More Places



*The average metropolitan Orlando resident can access more than a half million jobs by car within 30 minutes from home, while transit riders only have access to 5,600 jobs in the same travel time.*



# 18%

Missed or skipped  
doctor's appointment in  
the last year due to lack  
of reliable transportation

## Most Affected

- Amer. Indian / Alaska Native
- Multiracial
- Hispanic
- Transit Riders





• Accessible for people of all abilities and languages

Cualquier persona independientemente de su condición económica opta por usar el transporte público.

## How do you define transportation equity?

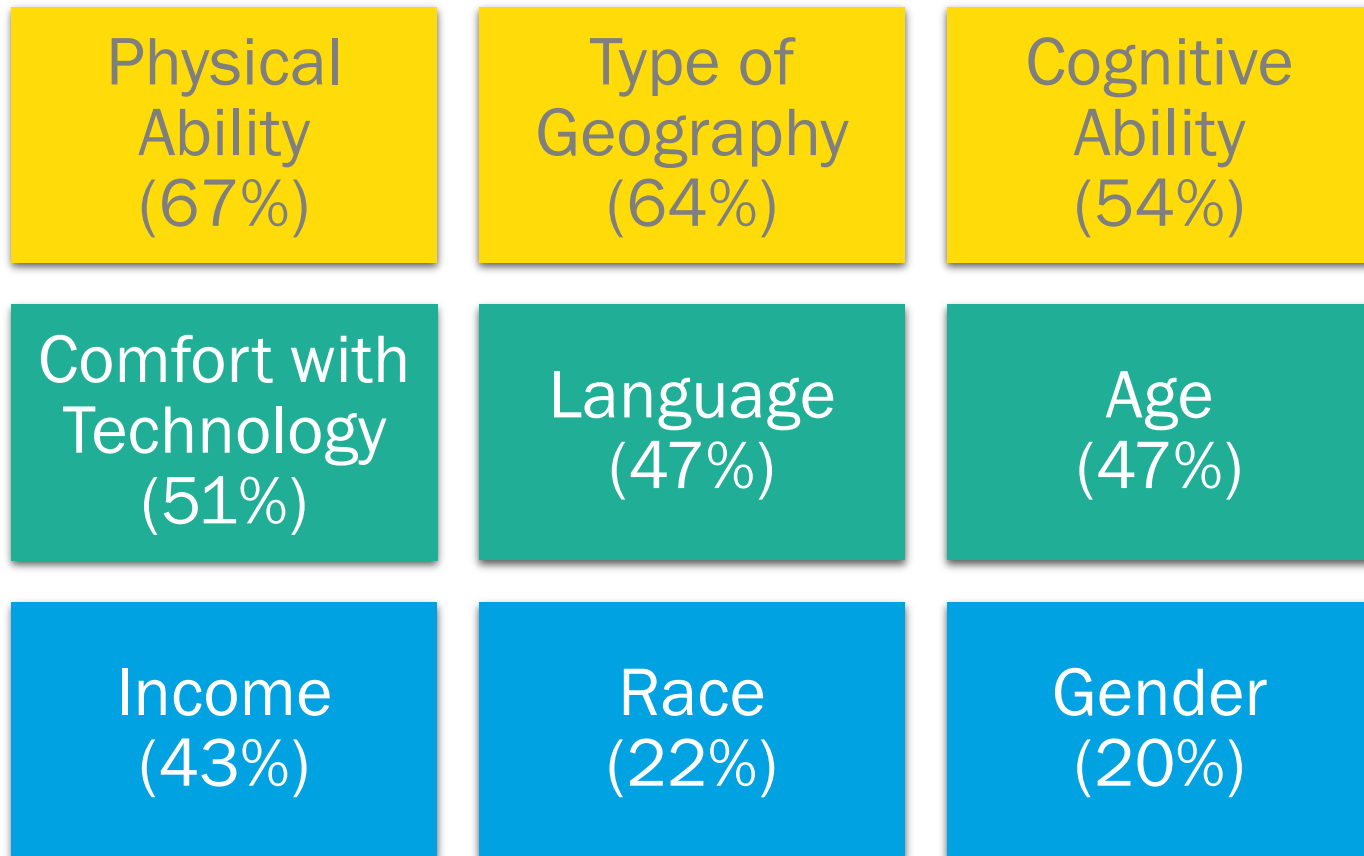
• Everyone, in every neighborhood, has fair and equal access to transportation.



• Having enough transportation options available for those who aren't driving.

• I really have NO idea. It is a brand-new term to me.

# How much should each of the following characteristics be considered in transportation planning?



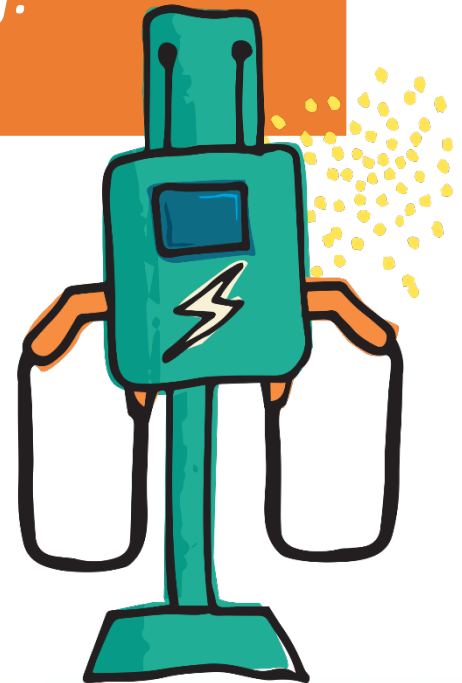
# Technology: Electric Vehicles



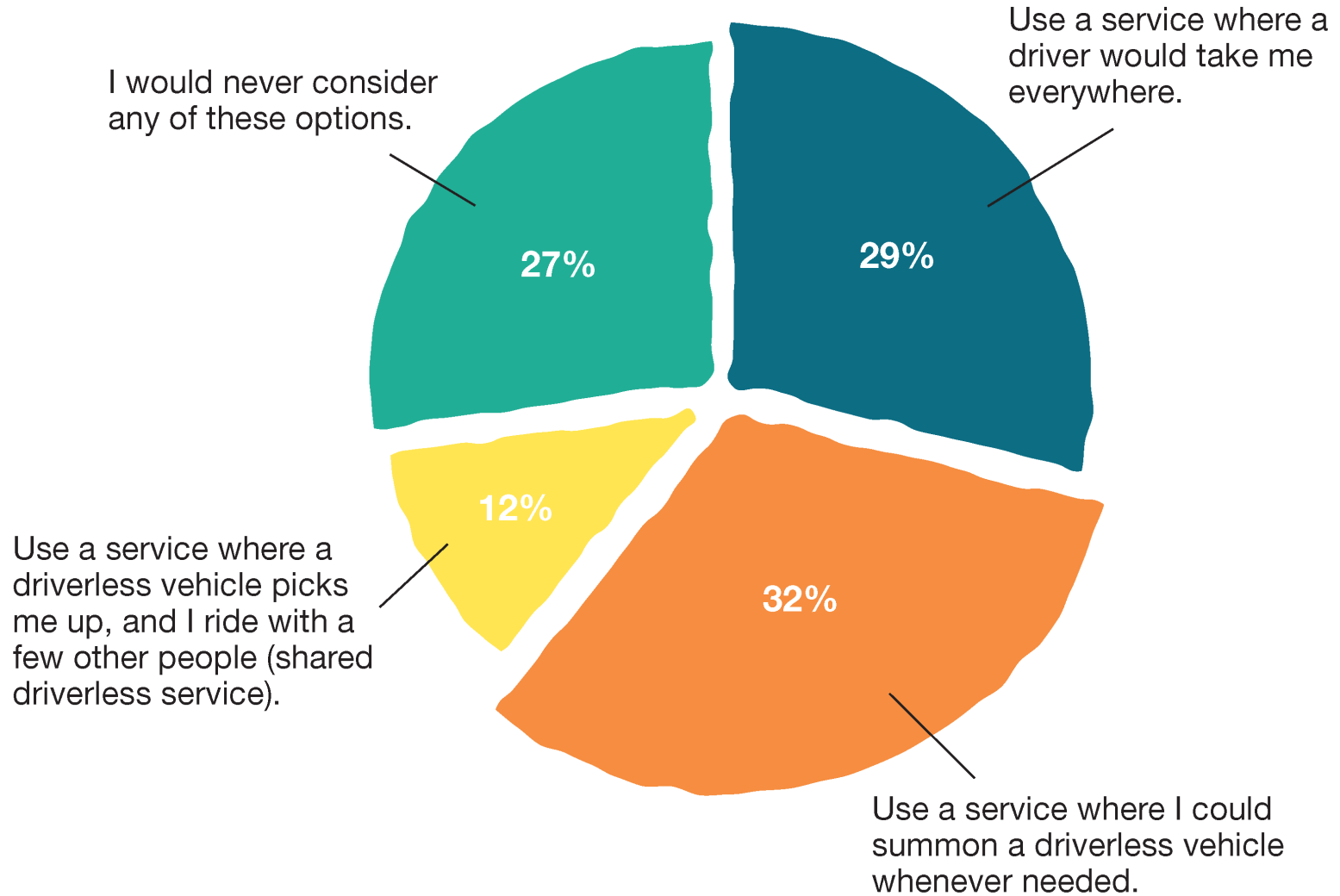
*“[Electric vehicles are] impractical in a hurricane as most power would be out, solar not collecting enough to charge due to storms.”*

*“For long distances, charging takes way too long.”*

*“[Charging] raises the electric bill substantially.”*



# Transportation Technology: Preferences for Future of Daily Travel



# Read the Full Report



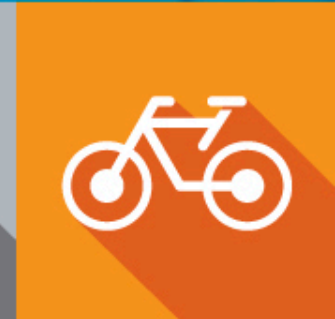
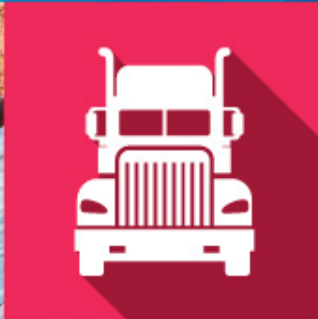
[MetroPlanOrlando.org/research](https://MetroPlanOrlando.org/research)

**Cynthia Lambert, APR**  
Public Information Manager  
MetroPlan Orlando  
[CLambert@metroplanorlando.org](mailto:CLambert@metroplanorlando.org)

**Sara Vega, Ph.D.**  
Principal Researcher  
Summit Survey Research  
[sara@summitsurveyresearch.com](mailto:sara@summitsurveyresearch.com)



# Thank You







# Turnpike (SR 91) Widening Project Development and Environment (PD&E) Study

*from South of SR 408 to SR 50 (MP 263 to 273)*

*Orange County*

*Project Number: 444007-1*

**METROPLAN ORLANDO**

*CAC - August 25, 2021*

*TSMOAC – August 27, 2021*

*TAC – August 27, 2021*

*MAC – September 2, 2021*

## Objective of Presentation

- Provide an overview and status of the PD&E study

## Presenters



**Jazlyn Heywood**

Project Manager for  
Florida's Turnpike Enterprise (Atkins)



**Nathan Silva**

Consultant Project Manager (RS&H)

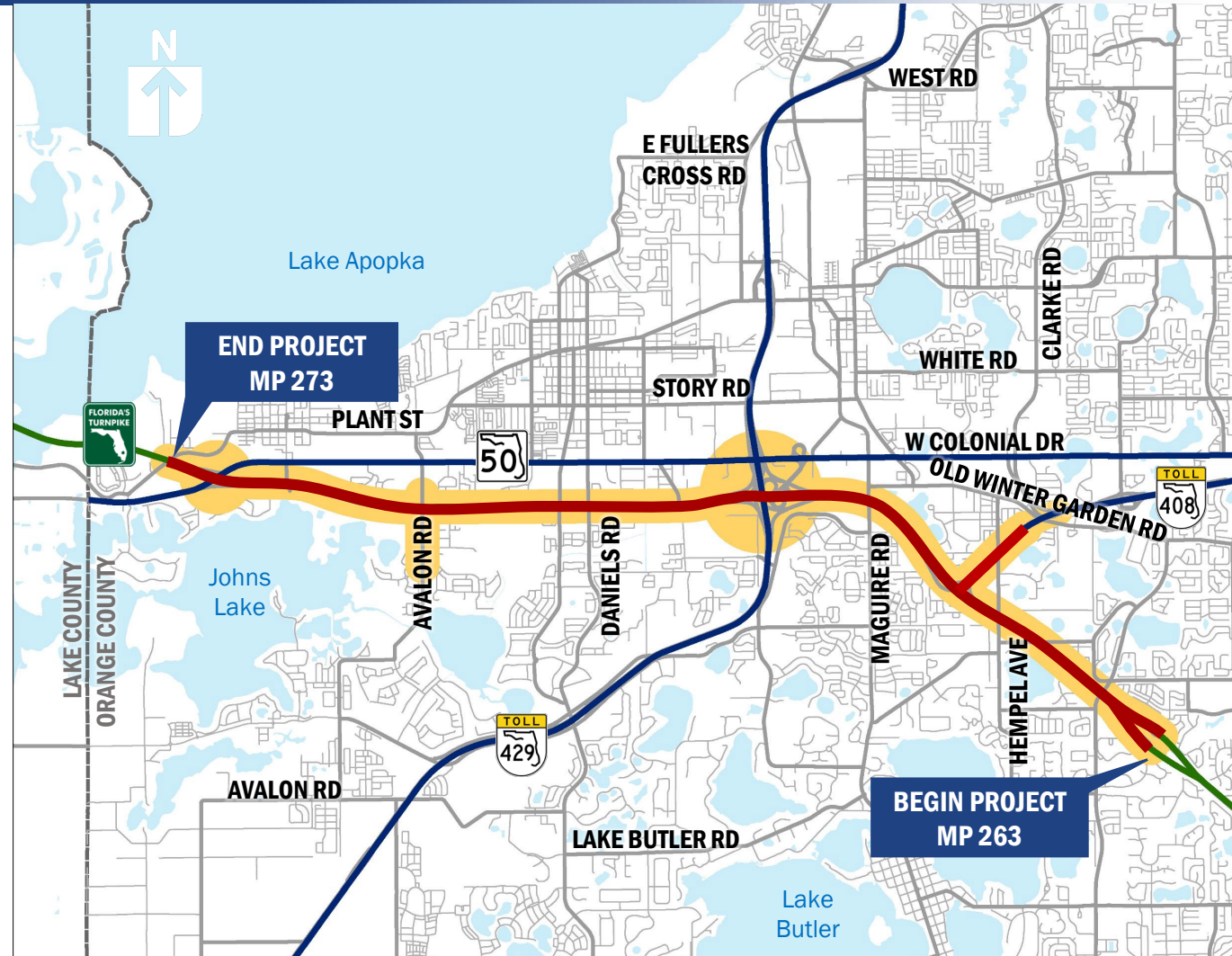


from South of SR 408 to SR 50 (MP 263 to 273)

FPID: 444007-1 | Efficient Transportation Decision Making (ETDM) Number: 14378

## Study Limits

- Florida's Turnpike from south of SR 408 to SR 50
  - Mile Post 263 to 273 (Approximately 10 miles)
- SR 408 from SR 91 to Old Winter Garden Road
  - Approximately 1 mile



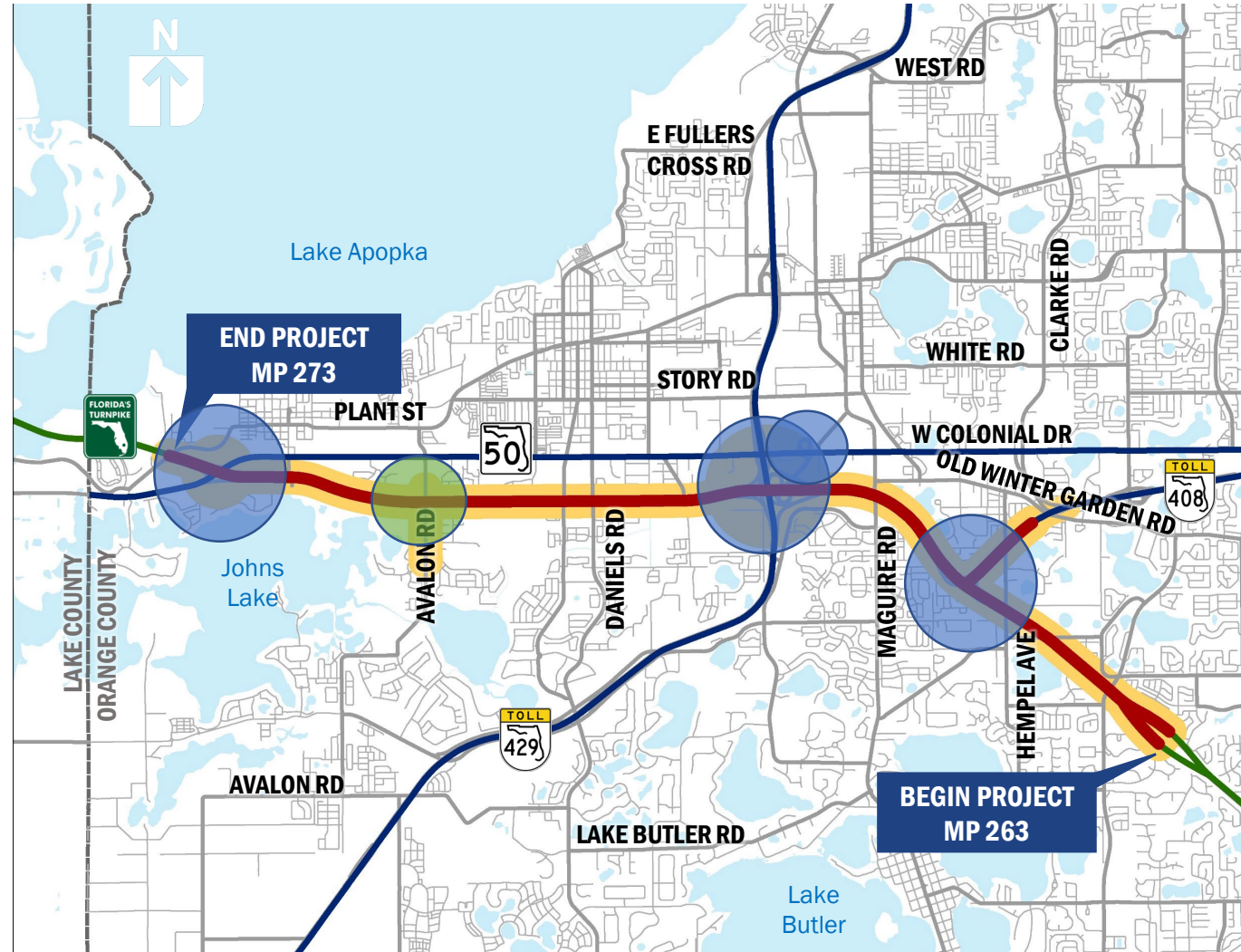
from South of SR 408 to SR 50 (MP 263 to 273)

FPID: 444007-1 | Efficient Transportation Decision Making (ETDM) Number: 14378

## Study Scope

Includes the evaluation of:

- Existing and future (2045) traffic conditions
- Modifications to existing interchanges
  - SR 408
  - SR 50 (Ocoee/Winter Garden)
  - SR 429
  - SR 50 (Clermont/Oakland)
- Potential new local access interchange – Avalon Road







# Turnpike (SR 91) Widening Project Development and Environment (PD&E) Study



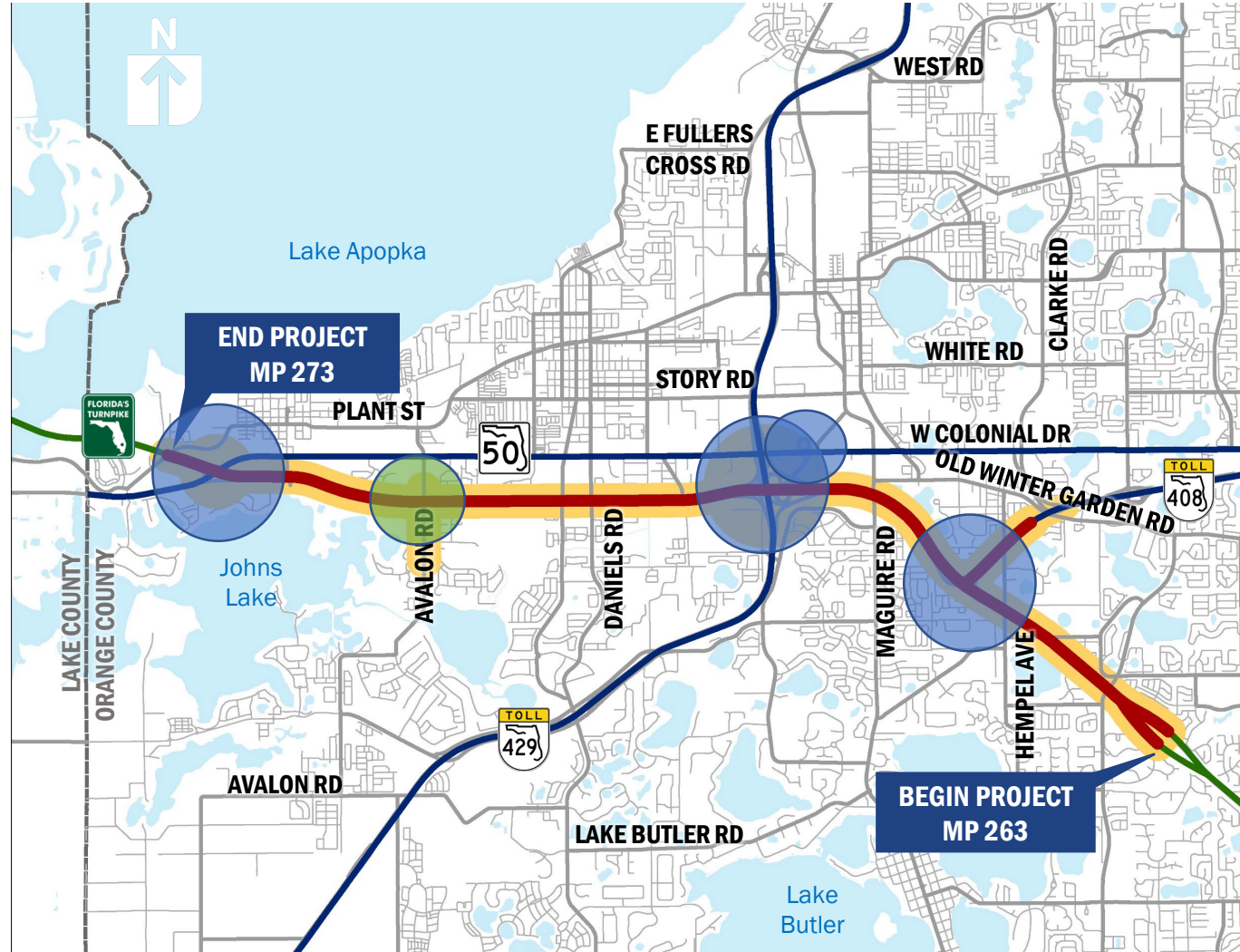
from South of SR 408 to SR 50 (MP 263 to 273)

FPID: 444007-1 | Efficient Transportation Decision Making (ETDM) Number: 14378

## Local Agencies



CENTRAL FLORIDA EXPRESSWAY AUTHORITY





# Turnpike (SR 91) Widening Project Development and Environment (PD&E) Study



from South of SR 408 to SR 50 (MP 263 to 273)

FPID: 444007-1 | Efficient Transportation Decision Making (ETDM) Number: 14378

## Mainline Widening

- Turkey Lake Service Plaza to SR 408
  - 5 lanes and 1 auxiliary lane in each direction
- SR 408 to SR 429
  - Collector-Distributor (CD) System
- SR 429 to SR 50
  - 5 lanes each direction

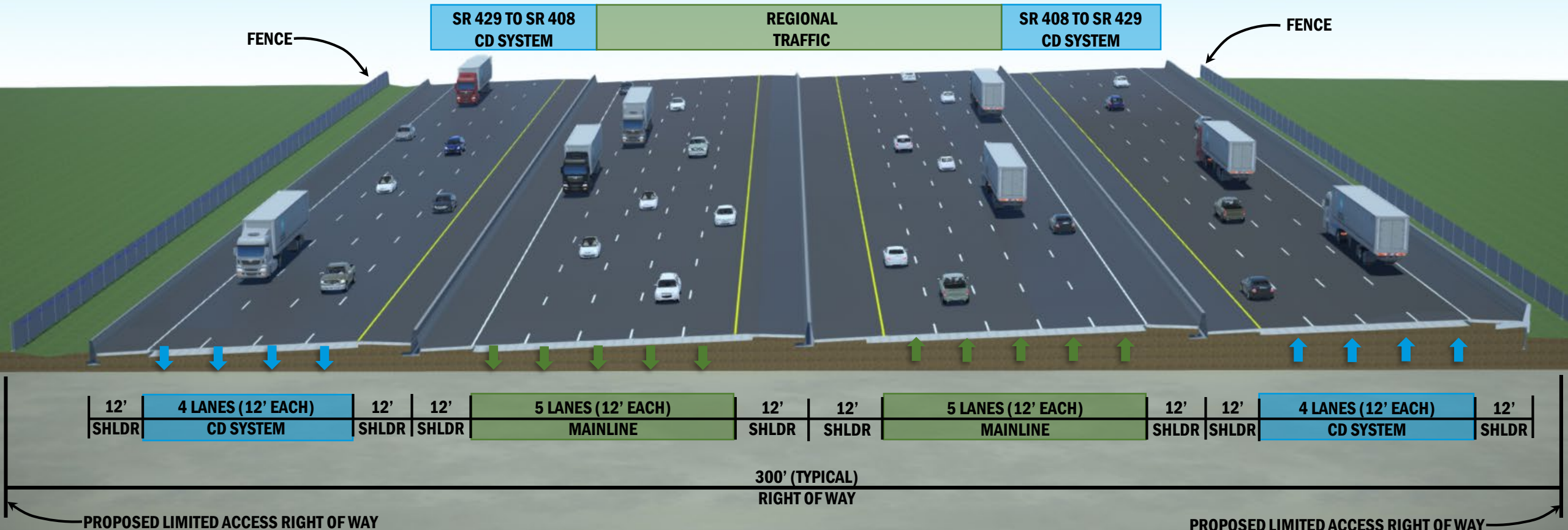
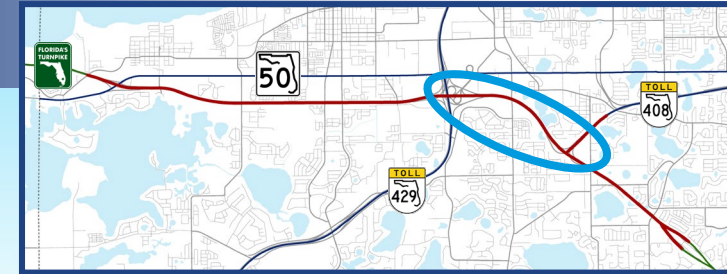


# Turnpike (SR 91) Widening Project Development and Environment (PD&E) Study



from South of SR 408 to SR 50 (MP 263 to 273)  
FPID: 444007-1 | Efficient Transportation Decision Making (ETDM) Number: 14378

## SR 408 to SR 429





# Turnpike (SR 91) Widening Project Development and Environment (PD&E) Study



from South of SR 408 to SR 50 (MP 263 to 273)

FPID: 444007-1 | Efficient Transportation Decision Making (ETDM) Number: 14378

## Interchanges

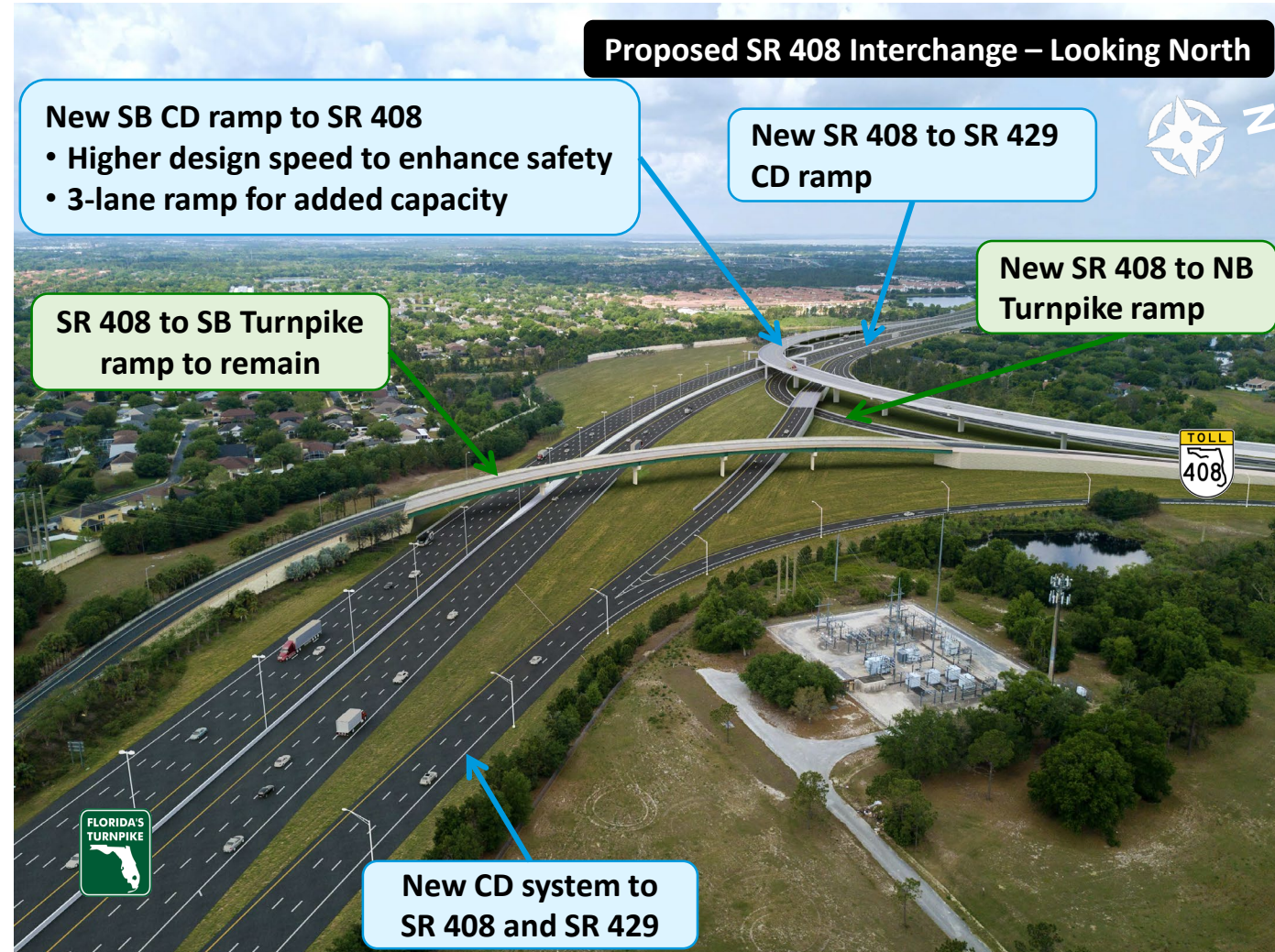
- SR 408 Interchange
- SR 429 Interchange
- SR 50 Connector Interchange Alternatives
- Avalon Road Interchange Alternatives
- SR 50 Interchange Alternatives



## SR 408 Interchange

### Objectives

- Increase interchange capacity
- Improve safety characteristics
- Accommodate CD system





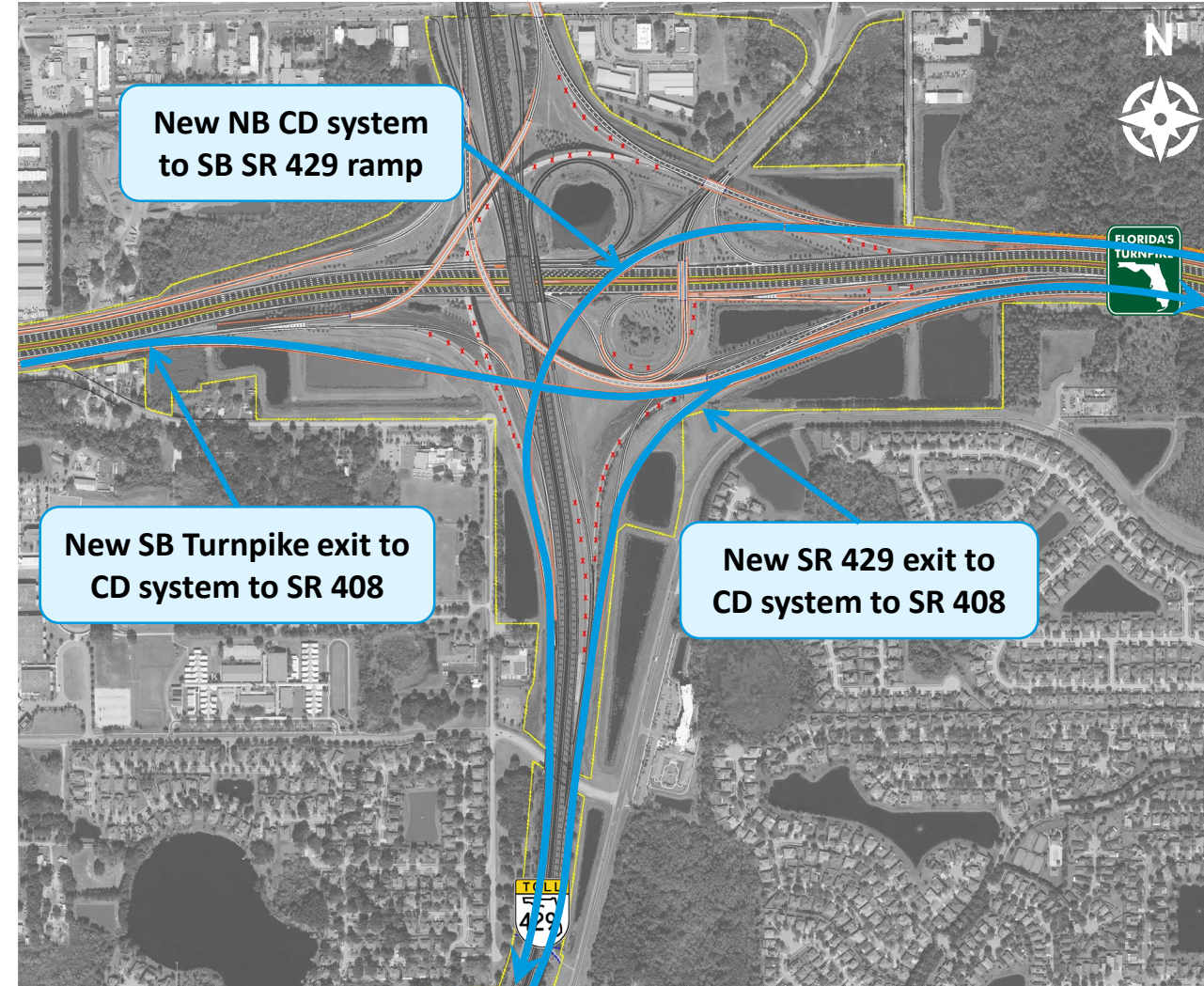
## SR 429 Interchange

### Objectives

- Increase interchange capacity
- Improve safety characteristics
- Accommodate CD system

### Characteristics

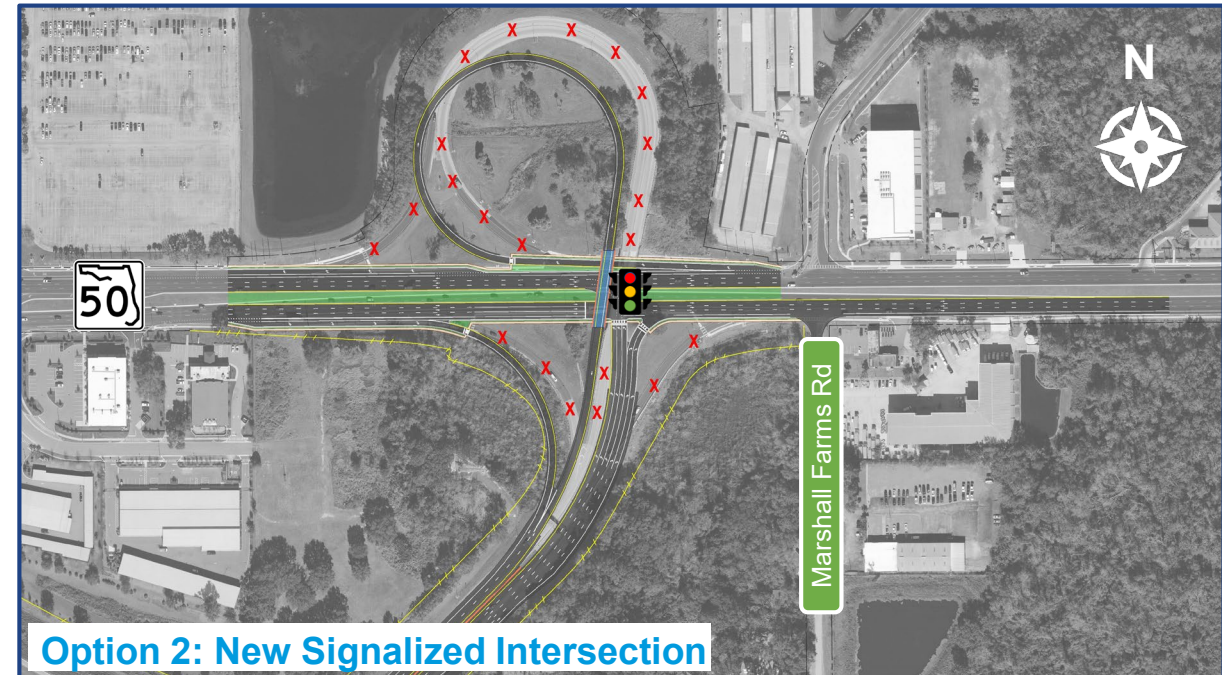
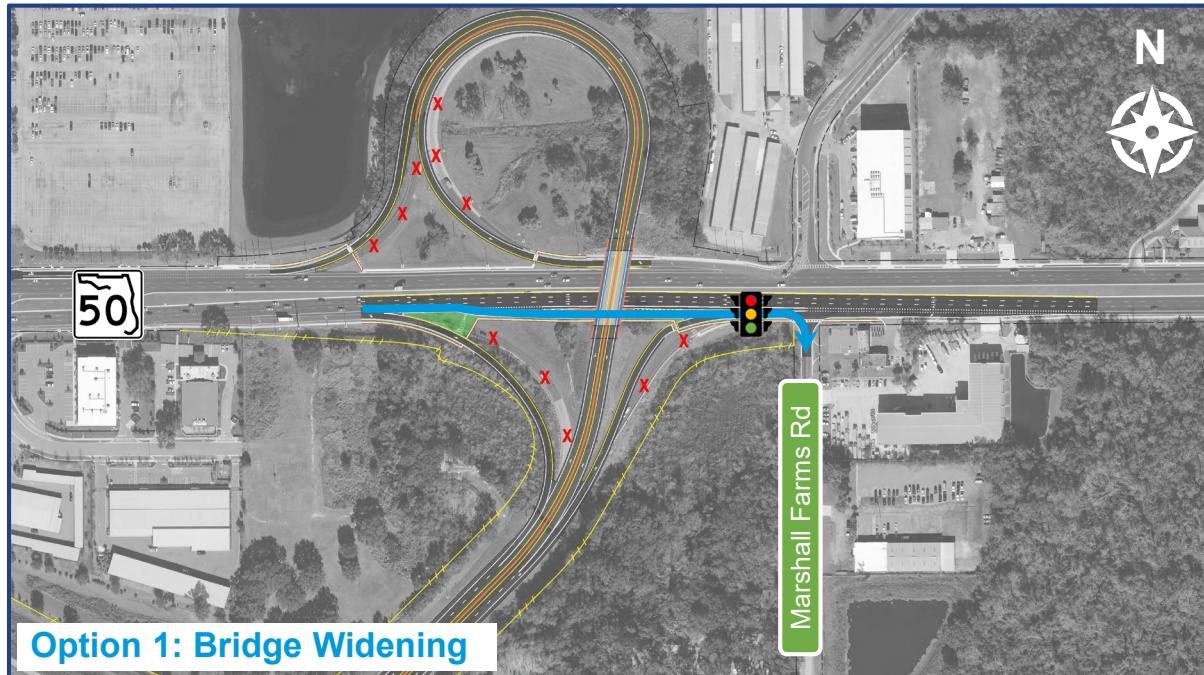
- Replaces Northbound Turnpike to Southbound SR 429 ramp
- Modifications fit within Turnpike right of way





## SR 50 Connector

**Objective:** Reconstruct ramps to improve safety and operations





## Avalon Road Interchange

- 3 Build Alternatives
- Provide new local access
- Relieve traffic demand on SR 50/ Clermont interchange
- Extend Avalon Road widening to Sunridge Boulevard
- Additional right of way will be required

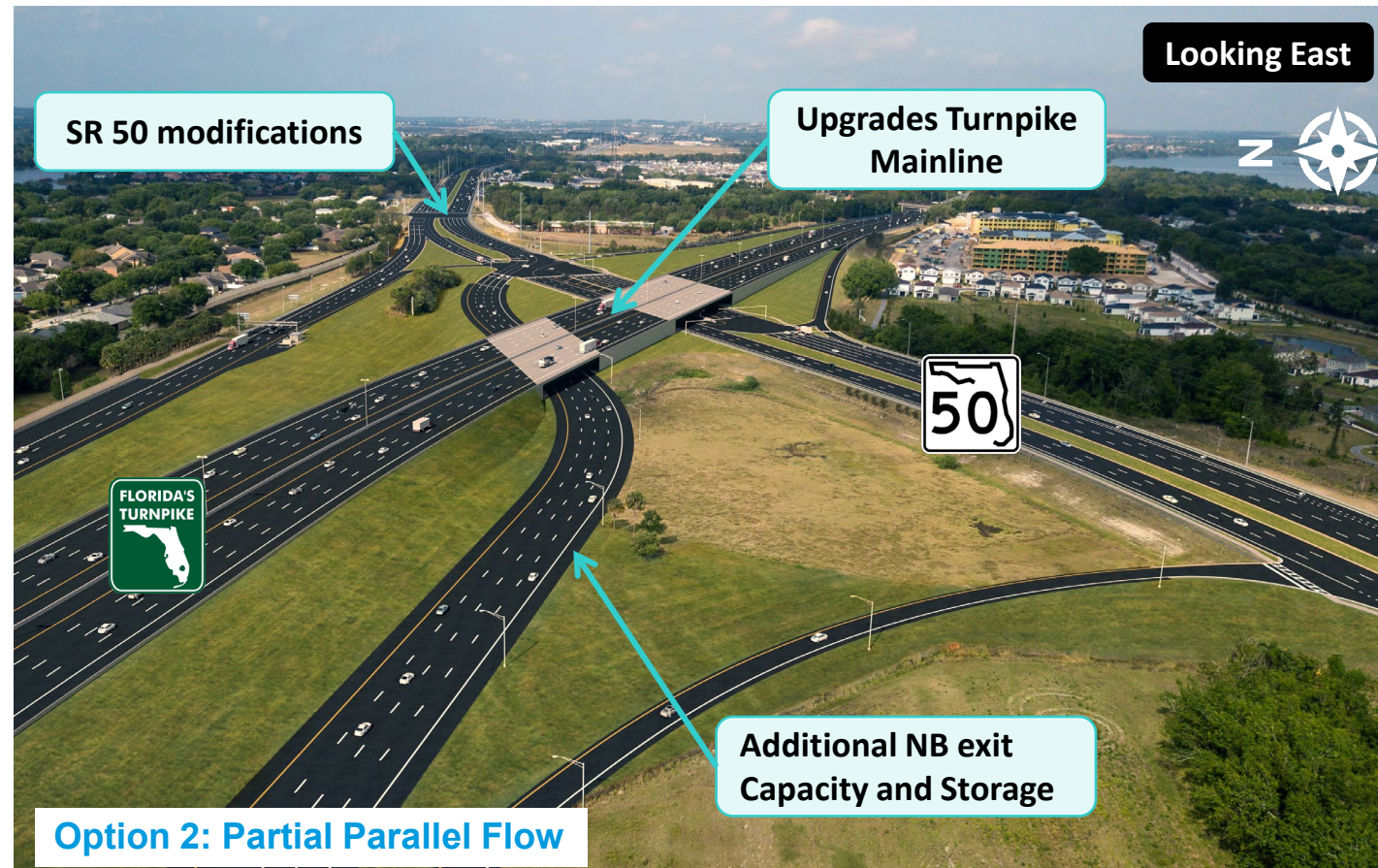


Option 2: Turbo Roundabout



## SR 50 (Oakland/Clermont) Alternatives

- 3 Build Alternatives
- Additional northbound exit capacity and storage
- Upgrades existing Turnpike mainline geometry
- Modifications to SR 50
- Additional right of way will be required



Option 2: Partial Parallel Flow

## Public Involvement

- Public involvement is a very important part of the PD&E Study process
- Outreach methods include:
  - Local Agency Coordination Meetings
  - Public Meetings
  - Public Hearing
  - Newsletters
  - Project Website [www.Turnpike408to50.com](http://www.Turnpike408to50.com)
  - Other Meetings







# Turnpike (SR 91) Widening Project Development and Environment (PD&E) Study

from South of SR 408 to SR 50 (MP 263 to 273)

FPID: 444007-1 | Efficient Transportation Decision Making (ETDM) Number: 14378



## Virtual Meeting – August 10, 2021

- Participants:
  - 2 - Elected / Appointed Official
  - 31 – Property owner / Interested Person
- Approximately 40 Questions / Comments submitted
- Primary Topics: Drainage, Noise, Access, Property impacts

## Alternatives Public Meeting Summary



# Turnpike (SR 91) Widening Project Development and Environment (PD&E) Study

from South of SR 408 to SR 50 (MP 263 to 273)

FPID: 444007-1 | Efficient Transportation Decision Making (ETDM) Number: 14378



## In-Person Meeting – August 12, 2021

- Participants:
  - 6 - Elected / Appointed Official
  - 43 – Property owner / Interested Person
- Primary Questions / Comments:
  - Gotha area drainage
  - Gotha Cemetery and Nehrling Gardens Impacts
  - Pearl Lake impacts
  - Traffic Noise

### Alternatives Public Meeting Summary



# Turnpike (SR 91) Widening Project Development and Environment (PD&E) Study



from South of SR 408 to SR 50 (MP 263 to 273)

FPID: 444007-1 | Efficient Transportation Decision Making (ETDM) Number: 14378

## Schedule

Project Milestones	2019		2020				2021				2022		
	July - September	October - December	January - March	April - June	July - September	October - December	January - March	April - June	July - September	October - December	January - March	April - June	
Begin Study	◆												
Data Collection	█												
Public Input			█										
Public Kickoff Open House			◆										
Alternatives Analysis			█										
Alternatives Public Information Meeting									◆				
Alternatives Refinement and Documentation								█					
Public Hearing											◆		
Finalize Documents											█		
State Environmental Impact Report (SEIR) Approved – Study Completed												◆	

Tentative – Subject to Change



# Turnpike (SR 91) Widening Project Development and Environment (PD&E) Study



from South of SR 408 to SR 50 (MP 263 to 273)  
FPID: 444007-1 | Efficient Transportation Decision Making (ETDM) Number: 14378

## Contact Information

**Jazlyn Heywood, P.E.**

**Project Manager**

**Florida's Turnpike Enterprise (Atkins)**



P.O. Box 613069  
Ocoee, Florida 34761-3069



Phone: 407-264-3298



Email: [Jazlyn.Heywood@dot.state.fl.us](mailto:Jazlyn.Heywood@dot.state.fl.us)

**Rax Jung, P.E., Ph.D.**

**Project Development Engineer**

**Florida's Turnpike Enterprise**



P.O. Box 613069  
Ocoee, Florida 34761-3069



Phone: 407-264-3870



Email: [Rax.Jung@dot.state.fl.us](mailto:Rax.Jung@dot.state.fl.us)

Project Website: [www.Turnpike408to50.com](http://www.Turnpike408to50.com)



# Thanks for joining us!

