

# VISION ZERO Safety Action Planning

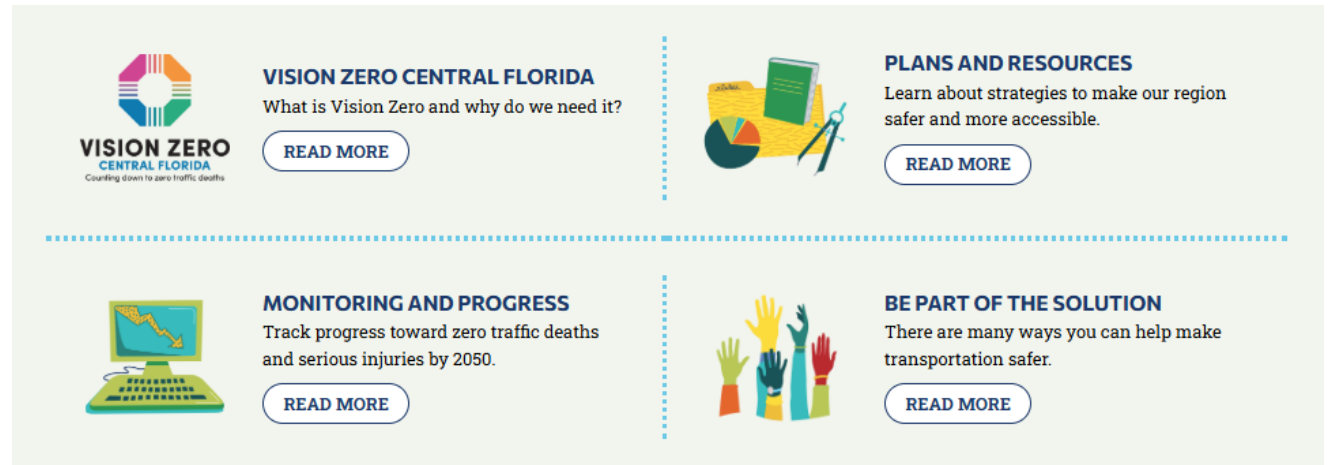
Status Update to the CFMPOA – April 2026



# Work to Date

## Prior Transportation Safety Efforts

- Developed 22 Local Safety Action Plans + 2050 Regional Plan
  - Social Media Kits
  - Elected Official Guide
  - Kids Activity Book
  - Safety Videos
  - Speaker / Community Events
  - Online Maps and Tools
- Created **Safety Hub** within the existing website:  
[MetroPlanOrlando.gov/safety](https://MetroPlanOrlando.gov/safety)



The image shows a grid of four informational cards, each with an icon, a title, a brief description, and a 'READ MORE' button. The cards are arranged in a 2x2 grid, separated by dashed lines.

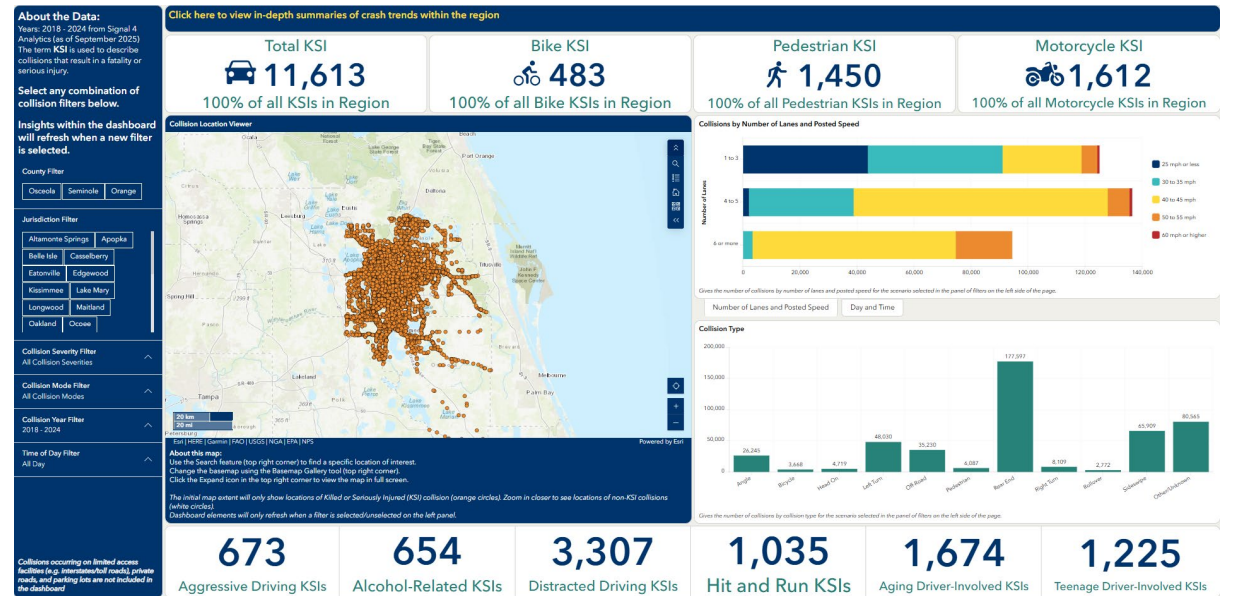
- VISION ZERO CENTRAL FLORIDA**  
What is Vision Zero and why do we need it?  
[READ MORE](#)
- PLANS AND RESOURCES**  
Learn about strategies to make our region safer and more accessible.  
[READ MORE](#)
- MONITORING AND PROGRESS**  
Track progress toward zero traffic deaths and serious injuries by 2050.  
[READ MORE](#)
- BE PART OF THE SOLUTION**  
There are many ways you can help make transportation safer.  
[READ MORE](#)



# Work to Date

## Prior Transportation Safety Efforts

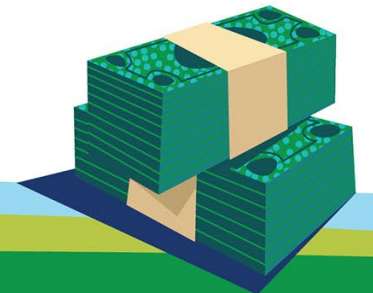
- Developed 22 Local Safety Action Plans + 2050 Regional Plan
  - Social Media Kits
  - Elected Official Guide
  - Kids Activity Book
  - Safety Videos
  - Speaker / Community Events
  - Online Maps and Tools
- Created **Safety Hub** within the existing website:  
[MetroPlanOrlando.gov/safety](https://MetroPlanOrlando.gov/safety)



# Safe Streets and Roads for All

## Federal Supplemental Planning Grant

- Grant executed January 2026
- Key Activities
  - Continue safety-focused outreach
  - Data refinements/updates
  - Conduct Roadway Safety Audits/Evaluations on the HIN
  - Updates to Regional VZAP
- All work to be complete by June 2028

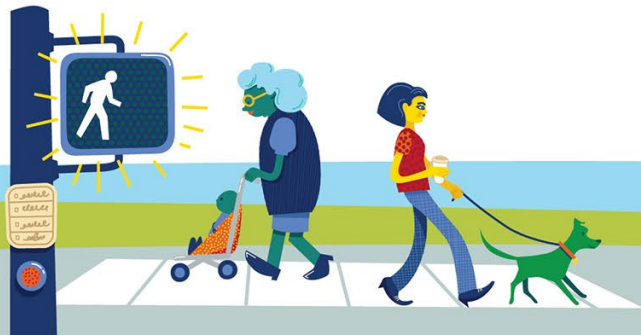


# Road Safety Audits (ongoing/starting soon)

## Tier 1 Corridors (7)

- US 17-92 from 18<sup>th</sup> to 27<sup>th</sup> St and 25<sup>th</sup> St from Hardy Ave to Park Drive
- SR 426 from Driver Ave to I-4
- US 17-92 from S of SR 434 to Longdale Ave
- SR 436 from Wilshire to Sem/Orange Co Line
- US 17-92 from Monroe Ave to Seminole Co Line
- Westmoreland Drive from Washington St to Gore St

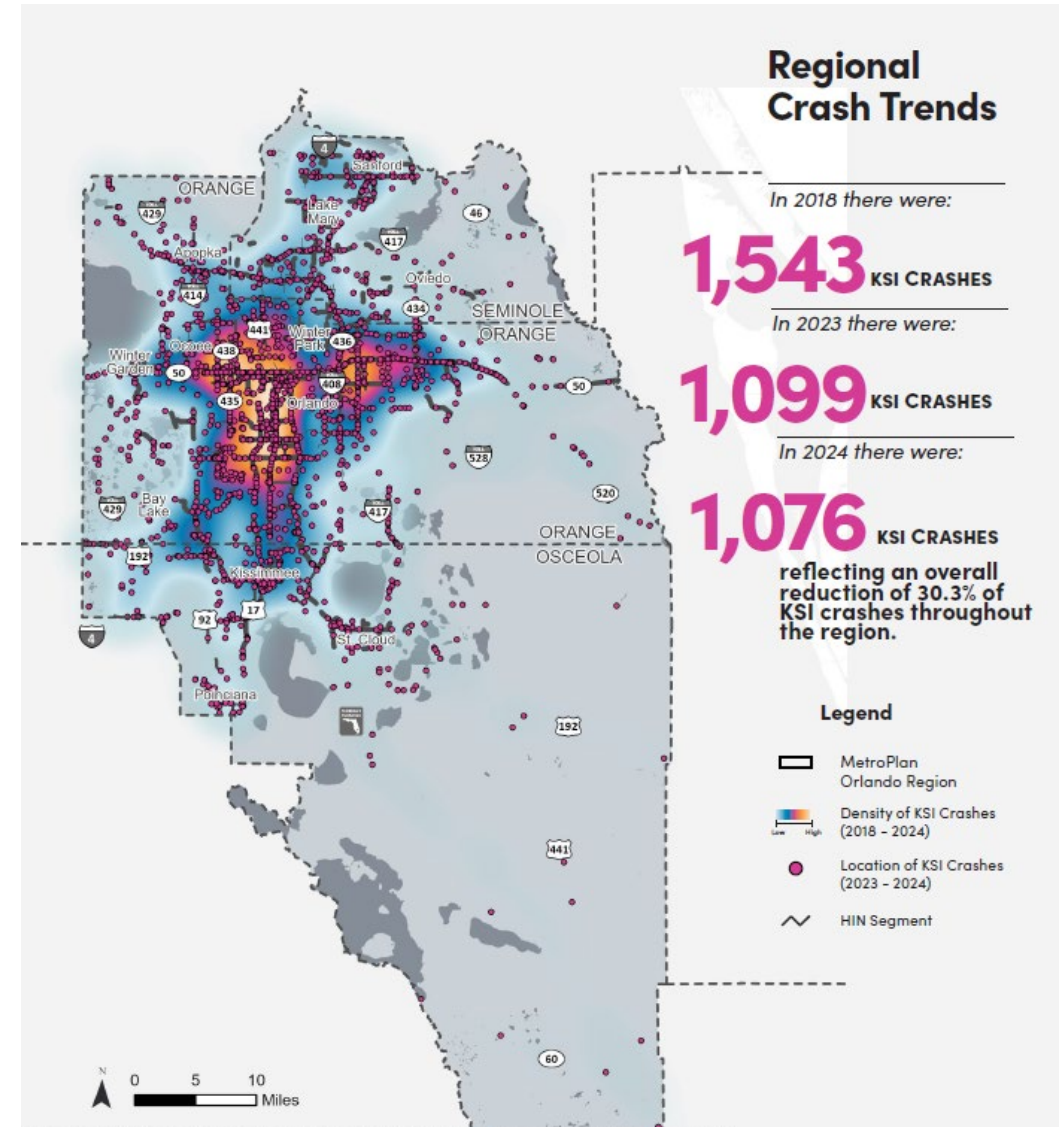
TASK	HIN Countermeasure Refinement	RSA (FHWA)	RSA+	Planning Corridor/ Feasibility Study
Duration (months)	1-2	4-5	8	16
Agency: Comment/Approval	✗	✓	✓	✓
Safety Analysis	✓	✓	✓	✓
Traffic Analysis	✗	✓	✓	✓
Cut Sheets	✓	✓	✓	✓
Roll Plots	✗	✗	✓	✓
Cost Estimation	← Planning Level →		← Engineer's Opinion of Probable Costs →	
Final Deliverables	Graphic/Memo	Report	Report	Reports (Traffic Study, Feasibility Analysis)
Planning Study Cost	\$	\$\$	\$\$\$	\$\$\$\$
Agency Time Commitment	Low	Low-Med	Med	High
Public Participation	Low	Low-Med	Med	High



# Annual Reporting

Monitor progress to improve outcomes

- Where crashes are happening now
- Regional Progress towards Zero
- Future Areas of Focus



# Before and After Evaluation Approach



- Demonstrate effects of specific safety countermeasures
- Quantify overall effectiveness and cost effectiveness
- Verify design assumptions
- Identify unintended consequences
- Enable continuous improvement





# White Paper Research

## E-Micromobility Safety: A Primer for Florida Transportation Professionals and Policymakers

Published Fall 2025, includes:

- Recommendations
- Policy Landscape
- Sales and Ridership Trends
- Policy/Program Considerations
- Infrastructure Considerations

[White Paper](#)



[Webinar](#)



### Florida Electric Micromobility Device Policy

Applicable for all device types:



NO MINIMUM AGE TO RIDE



HELMET REQUIRED FOR RIDERS UNDER 16

Device Type	What can my device do?		What do I need to ride?		Where can I ride?				
	Device Capability	Max Speed/ Florida Legal Limit (mph)	Driver's License Required	License Plate Required	Sidewalk	Trail/ Multi-Use Path	Bike Lane	Separated/ Protected Bike Lane	Shared Lane
Bicycle	Manual Pedal	28	✗	✗					
Class 1 E-Bike	Pedal-Assisted	20	✗	✗					
Class 2 E-Bike	Pedal-Assisted with Throttle	20	✗	✗					
Class 3 E-Bike	Pedal-Assisted	28	✗	✗					
Electric Scooter	Non-Pedal Operated with Throttle	28	✗	✗					
Moped	Pedal-Operated and/or with Throttle	30	✓	✓	✗	✗		✗	

# White Paper Research

## Balancing Speed Management and Emergency Response Times

### Research Question:

*How can agencies implement speed management strategies on emergency response routes while maintaining response times and advancing Vision Zero goals?*

- Literature Review
- Stakeholder Outreach
- Recommendations
  - Policy Framework & Implementation Procedures
  - Speed Management Guidance








Anticipated Release: May 2026



# Safety Speaker Series

- Last Session was about Kinetic Energy Transfer
- Next Session: May 20<sup>th</sup> on Distracted Driving
- Access past Speaker Series webinars at: <https://bit.ly/VZplaylist>



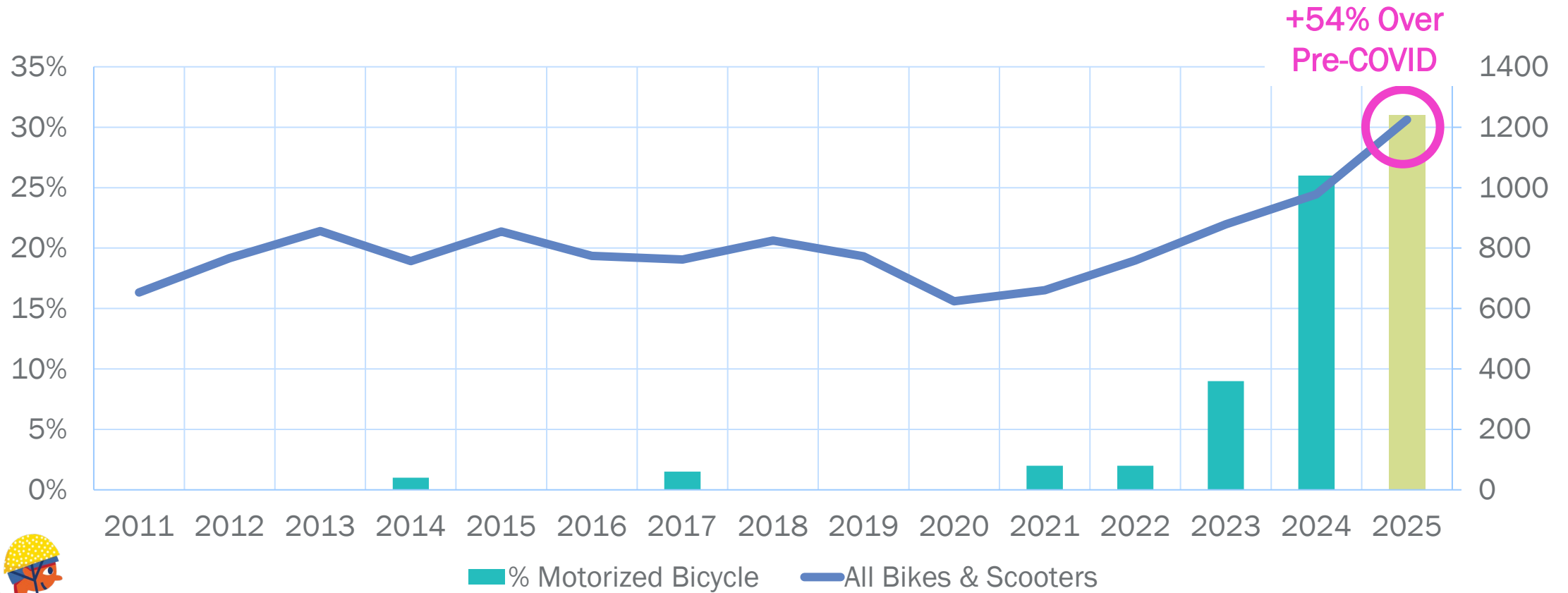
-  **Vision Zero Central Florida - Counting Down to Zero Traffic Deaths**  
MetroPlan Orlando • 877 views • 2 years ago
-  **Remembrance Video for Road Traffic Victims**  
MetroPlan Orlando • 52 views • 2 years ago
-  **Vision Zero Central Florida - Counting Down to Zero Traffic Deaths (clip)**  
MetroPlan Orlando • 101 views • 2 years ago
-  **Vision Zero Central Florida Safety Speaker Series: Uniting on a Quest for Zero Traffic Deaths**  
MetroPlan Orlando • 98 views • Streamed 2 years ago
-  **Vision Zero Safety Speaker Series & Best Foot Forward Summit with Rebecca Sanders**  
MetroPlan Orlando • 206 views • Streamed 2 years ago



# TEEN E-BIKE EDUCATION PILOT



# Percent Motorized Bicycle Crash Trend



~31% of 2025 crashes involve e-bikes or e-scooters



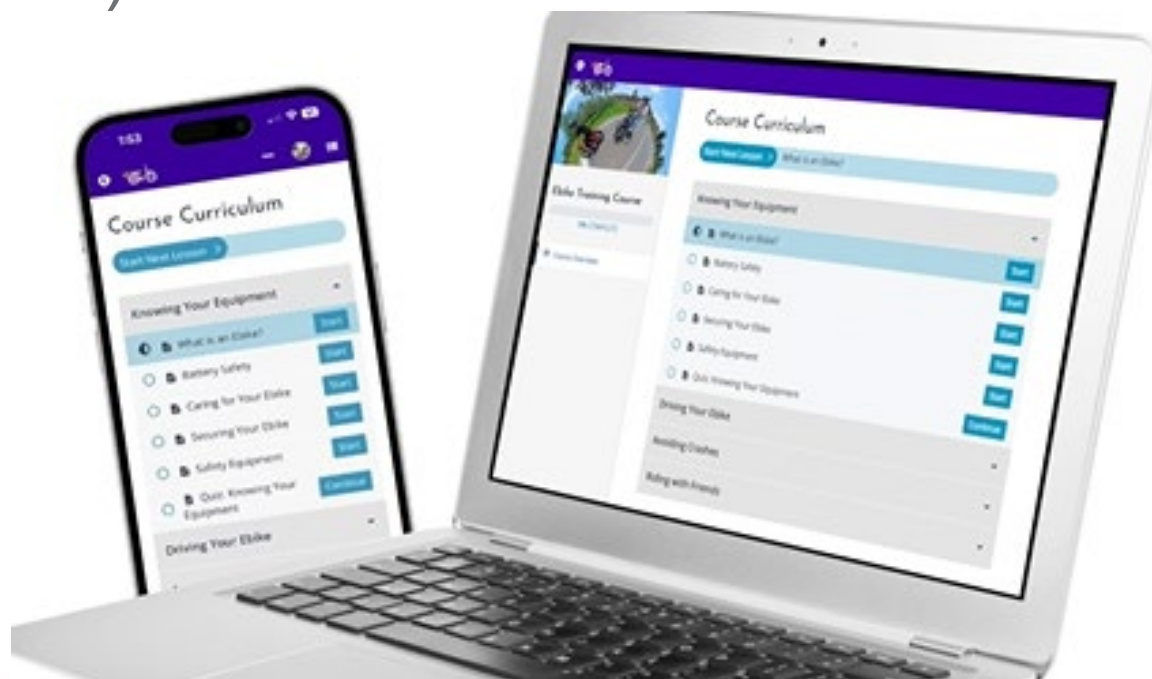
# Piloting Online E-Bike Training for Teens

- Leveraging Existing Online Course
- Focus Middle & High Schools
- Grades 7 to 10 (Ages 12 to 15)



# Piloting Online E-Bike Training for Teens

- Course developed and administered by the American Bicycling Education Association
- 21 Video Modules (60 Min.)
- Includes Quizzes and Pre- and Post-Course Surveys



# Pilot Project Timeline

- Coordination Ongoing with School Boards
- Course Distribution in Early Spring
- Report to be Complete by June 30<sup>th</sup>
  - Results by Grade Level
  - Future Implementation Recommendations





# Questions?

**Lara Bouck, PE AICP**

Manager of Project Development

[Lara.Bouck@MetroPlanOrlando.gov](mailto:Lara.Bouck@MetroPlanOrlando.gov)

**Adriana Rodriguez, PE**

Senior Transportation Engineer

[Adriana.Rodriguez@MetroPlanOrlando.gov](mailto:Adriana.Rodriguez@MetroPlanOrlando.gov)

