

Introduction

MetroPlan Orlando is conducting a Complete Streets study along Rock Springs Road as well as the West Orange Trail Extension Study, both studies are located within the City of Apopka. The studies are running concurrently and are being conducted in partnership with the City of Apopka and Orange County.

The location maps on either side of the page show the limits of each study along with proposed options to improve mobility and safety within the study area.

Staff Contact

For more information, contact:

Lara Bouck, PE, AICP
MetroPlan Orlando | Project Manager
 250 South Orange Avenue, Suite 200
 Orlando, FL 32801
 (407) 481-5672, Ext. 309
 LBouck@metroplanorlando.org

Para obtener más información, contacto:

Cynthia Lambert, APR
MetroPlan Orlando | Public Information Manager
 250 South Orange Ave, Suite 200
 Orlando, FL 32801
 (407) 481-5672 Ext. 320
 CLambert@metroplanorlando.org

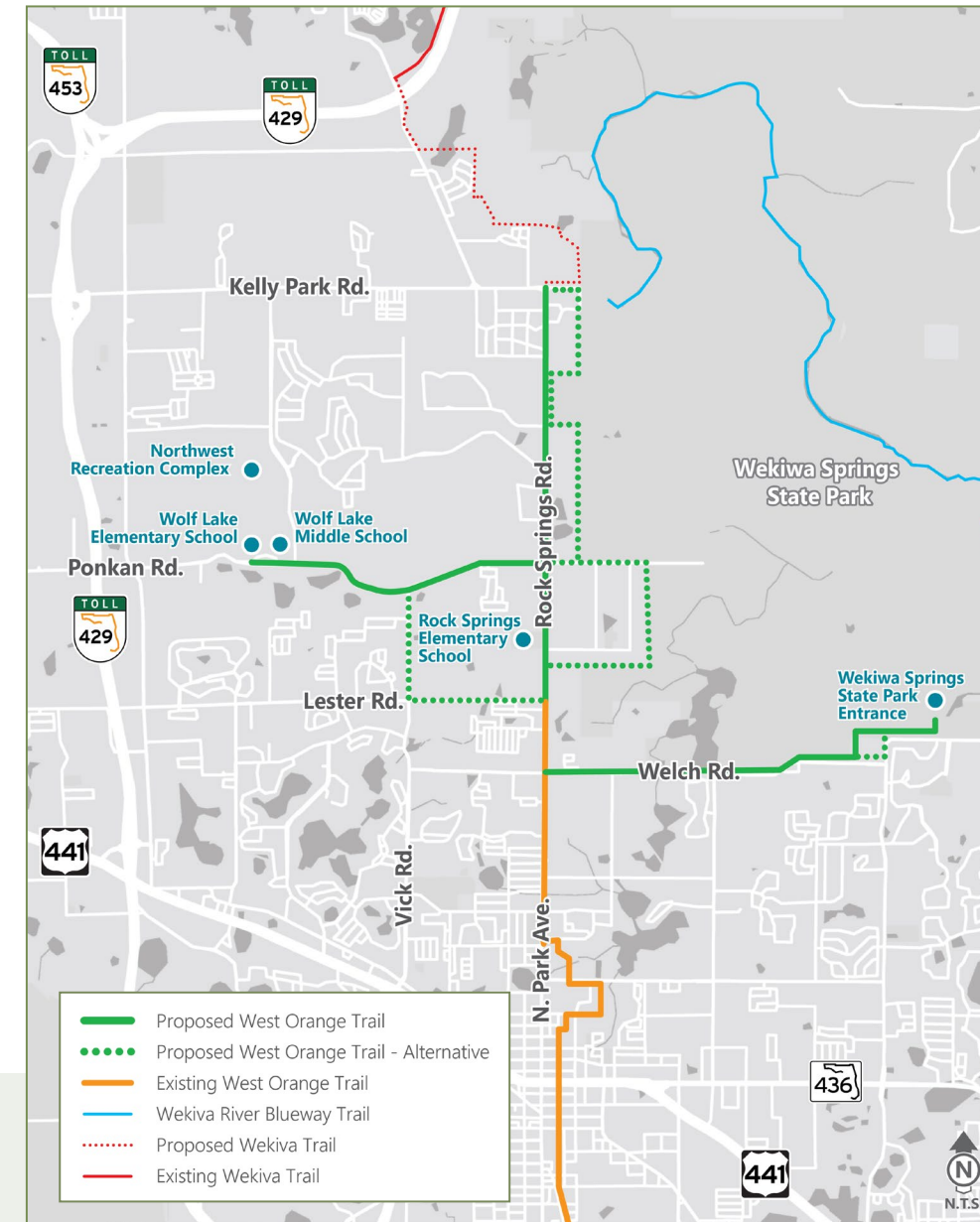


Visit the study website for up to date information and to view study documents:

MetroPlanOrlando.org/RockSprings

Project Schedule

Schedule Activity	2021					2022					Icon Legend		
	Mar-Apr	May-Jun	Jul-Aug	Sep-Oct	Nov-Dec	Jan-Feb	Mar-Apr	May-Jun	Jul-Aug	Sep-Oct		Oct-Dec	
Existing and Future Conditions Assessment	■												
Define and Select Alternatives				■									
Recommended Improvements Refinement and Documentation										■			
Public Engagement	■ 1				■ 1 2				■ 2 3				



West Orange Trail Extension Study

The West Orange Trail Extension Study is evaluating the extension of the trail from the existing terminus at Lester Road to Kelly Park Road, tying into the proposed Wekiwa Trail. The study is also evaluating two additional trail connections in the area to provide connections to the Wekiwa Springs State Park Entrance, Wolf Lake Elementary and Middle Schools, and the City of Apopka's Northwest Recreation Complex.

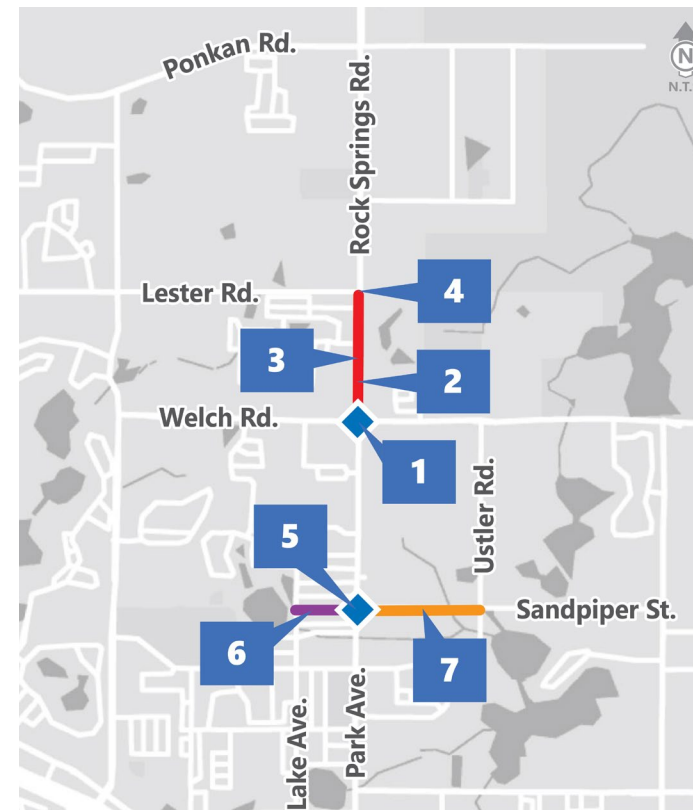
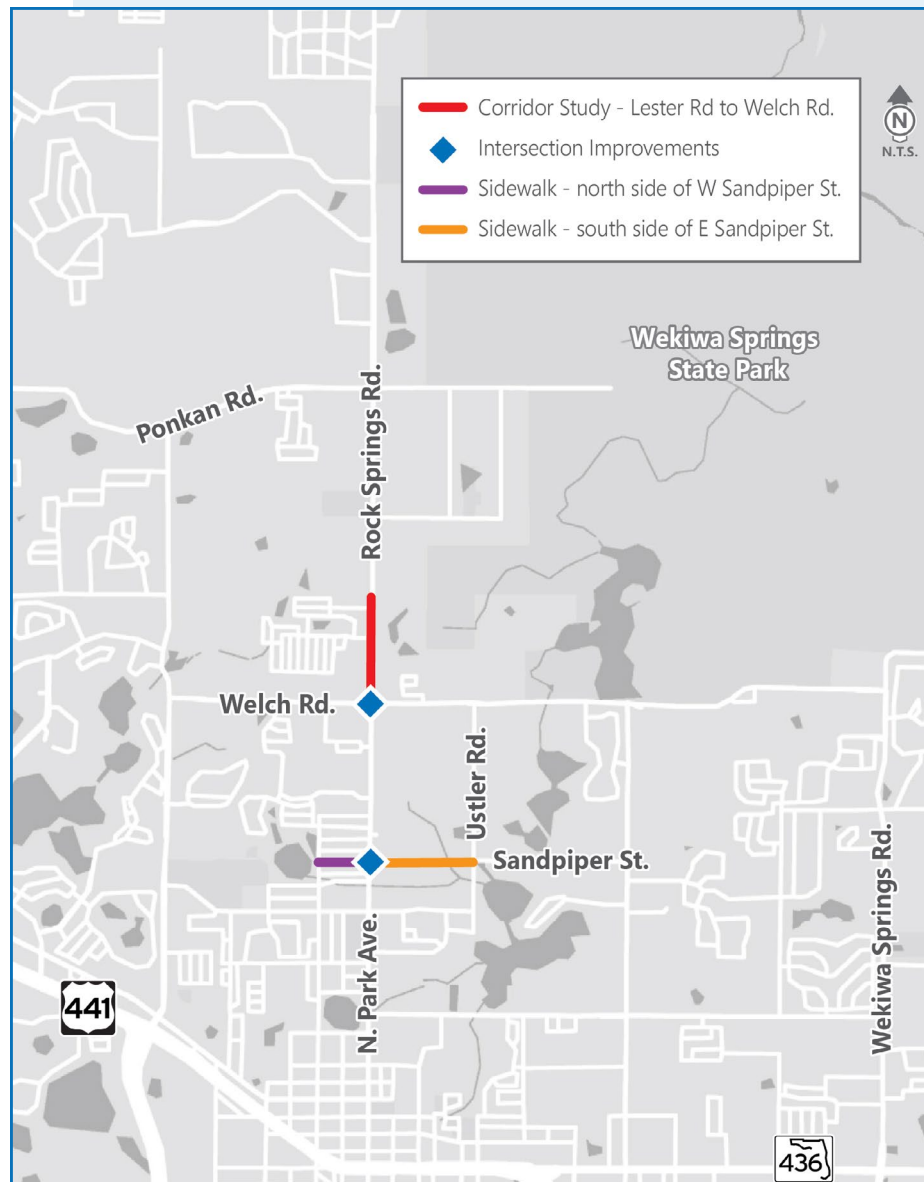
Alignment options for the trail extension and spurs are shown in green on the location map.

Tell us what you like or don't like about the proposed alignments by taking the [Project Alternatives Survey](#) or filling out a [comment form](#).

Rock Springs Road Study

Metroplan Orlando is conducting a complete streets study for Rock Springs Road from Welch Road to Lester Road (approximately 0.55 miles) and an intersection study at the intersection of Sandpiper Street and Park Avenue, with new sidewalks along Sandpiper Street from Lake Avenue to Ustler Road.

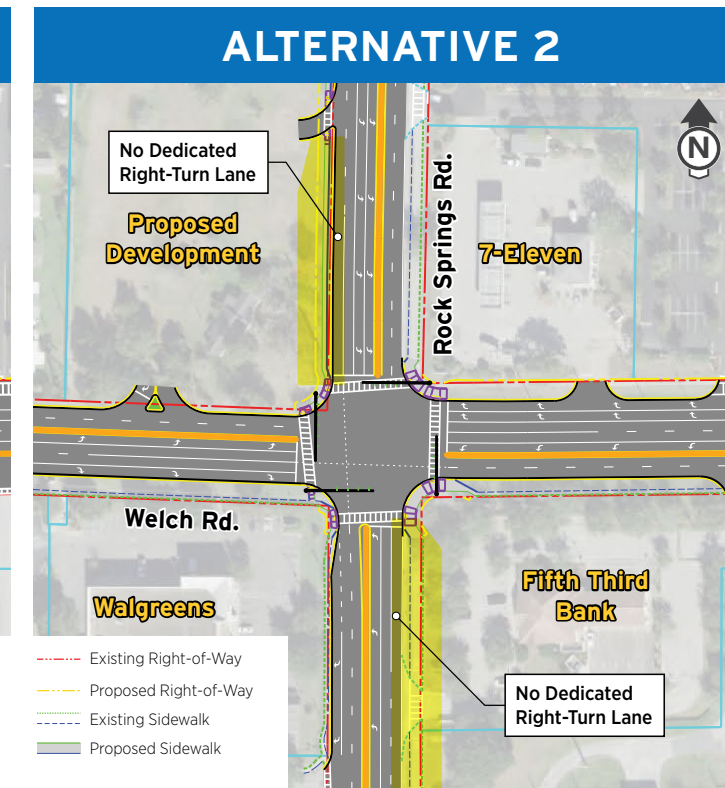
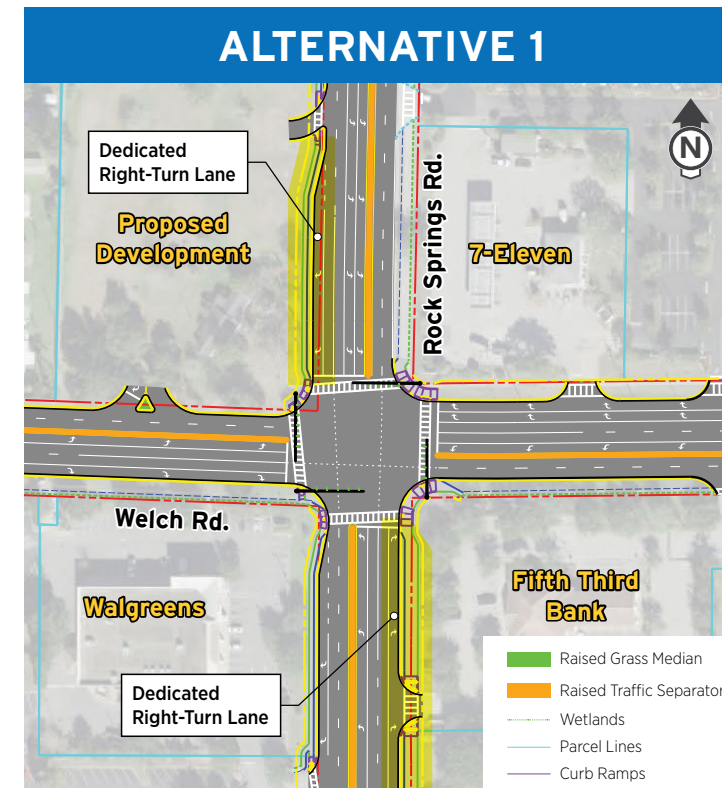
Tell us what you think about the proposed changes by taking the [Project Alternatives Survey](#) or filling out a [comment form](#).



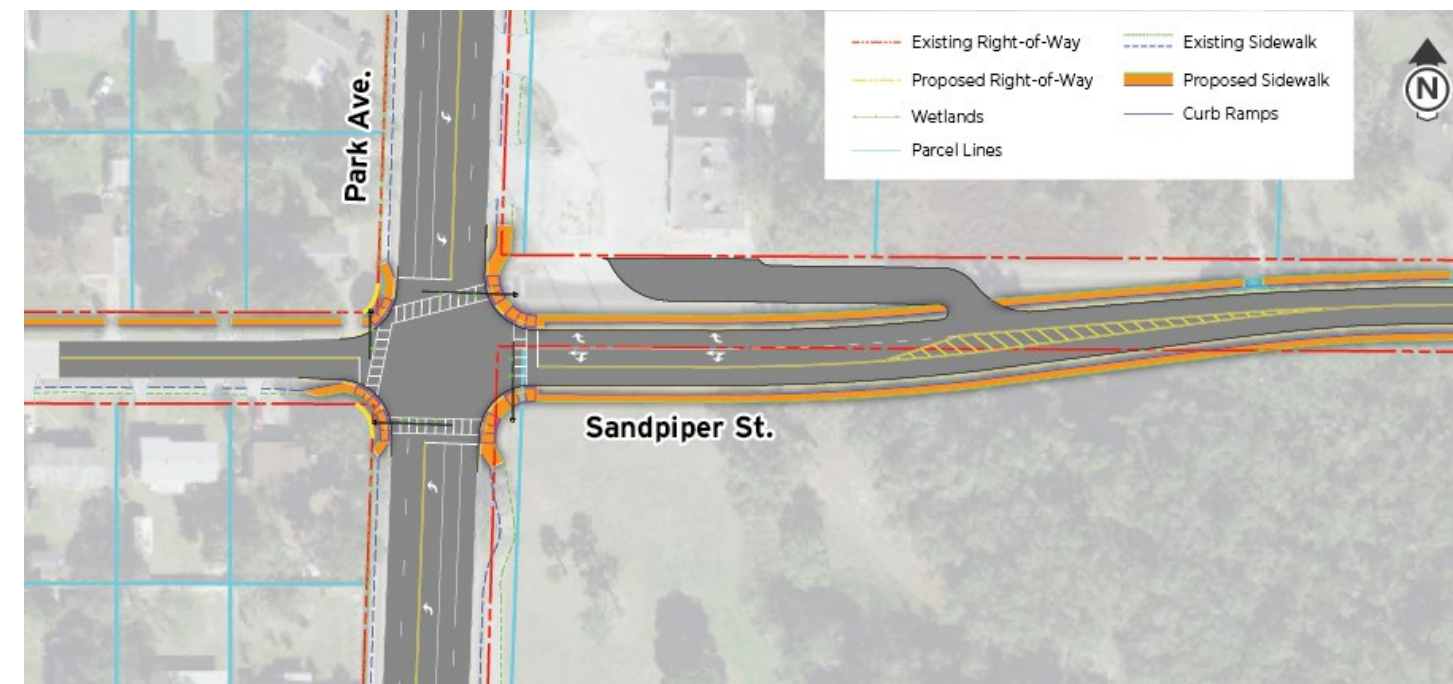
Proposed Updates

The following options are under consideration to improve operations and safety as part of the Rock Springs Road study:

1. Additional turn lanes and raised traffic separators at the intersection of Welch Road at Rock Springs Road (two alternatives)
2. New signal at Publix North entrance (two alternatives)
3. New mid-block crosswalk south of Tanglewood Drive
4. Minor intersection updates at Lester Road and Rock Springs Road
5. Sandpiper Street realignment and new signal at Park Avenue intersection
6. New sidewalk along north side of Sandpiper Street to Lake Avenue
7. New sidewalk along south side of Sandpiper Street to Ustler Road



Rock Springs Road at Welch Road Intersection Alternatives



Sandpiper Street at Park Avenue Realignment