

# Transportation Systems Management and Operations (TSM&O) Master Plan



# Master Plan At-A-Glance



## In Development

Since  
Spring 2022



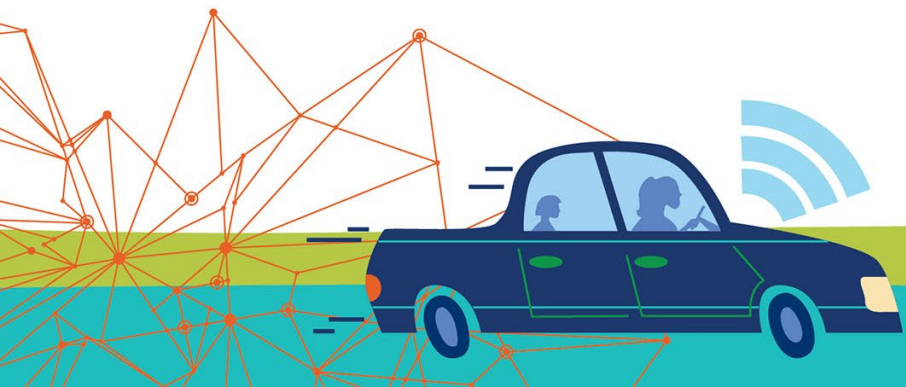
## Steering Committee

9 Agencies  
7 Meetings

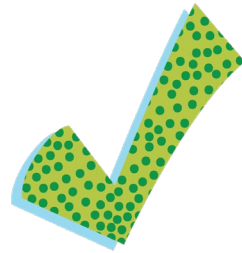


## Final Master Plan

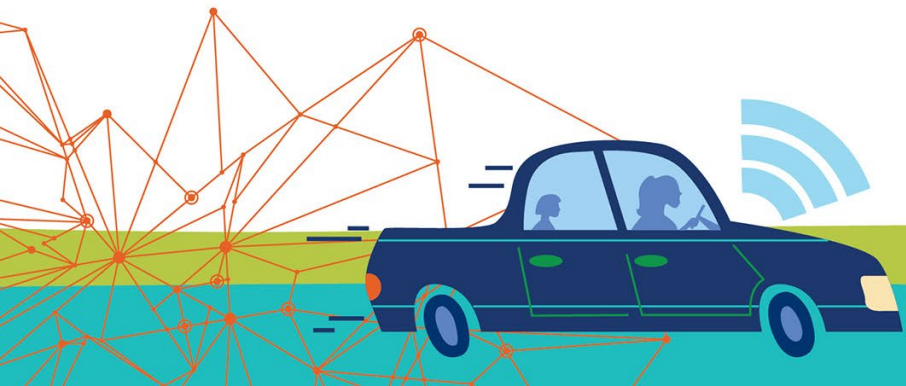
Summary Document  
9 Technical Reports



# Master Plan At-A-Glance



**TSM&O Component**  
of the  
2050 Metropolitan  
Transportation Plan





## Vision

*A regional multimodal transportation network that strategically leverages cost-effective technology and operations to maximize system mobility and safety.*

## Goals

- Safety and Security
- Reliability and Performance
- Investment and Economy
- Access and Connectivity
- Health & Environment

# Master Plan Development Process

## 1. Define Needs

- Conduct Documentation Review
- Conduct Existing Conditions Review
- Conduct Regional Intelligent Transportation Systems Architecture (RITSA) Review
- Conduct Gap Analysis
  - Strategies & Operations
  - Agency & Organizational
  - Corridors and Intersections



## 2. Identify How to Address Needs

- Define Principal Strategies
- Identify Funding Opportunities

## 3. Develop Prioritized Projects List

- Define Priority Scoring Criteria Framed on Goal Areas and Shaped by Objectives
- Prioritize Corridors and Intersections from Gap Analysis
- Apply Strategies to Corridors
- Prioritize Advanced ITS Projects

## 4. Identify Regionwide Strategies and Future Considerations

# Project Categories

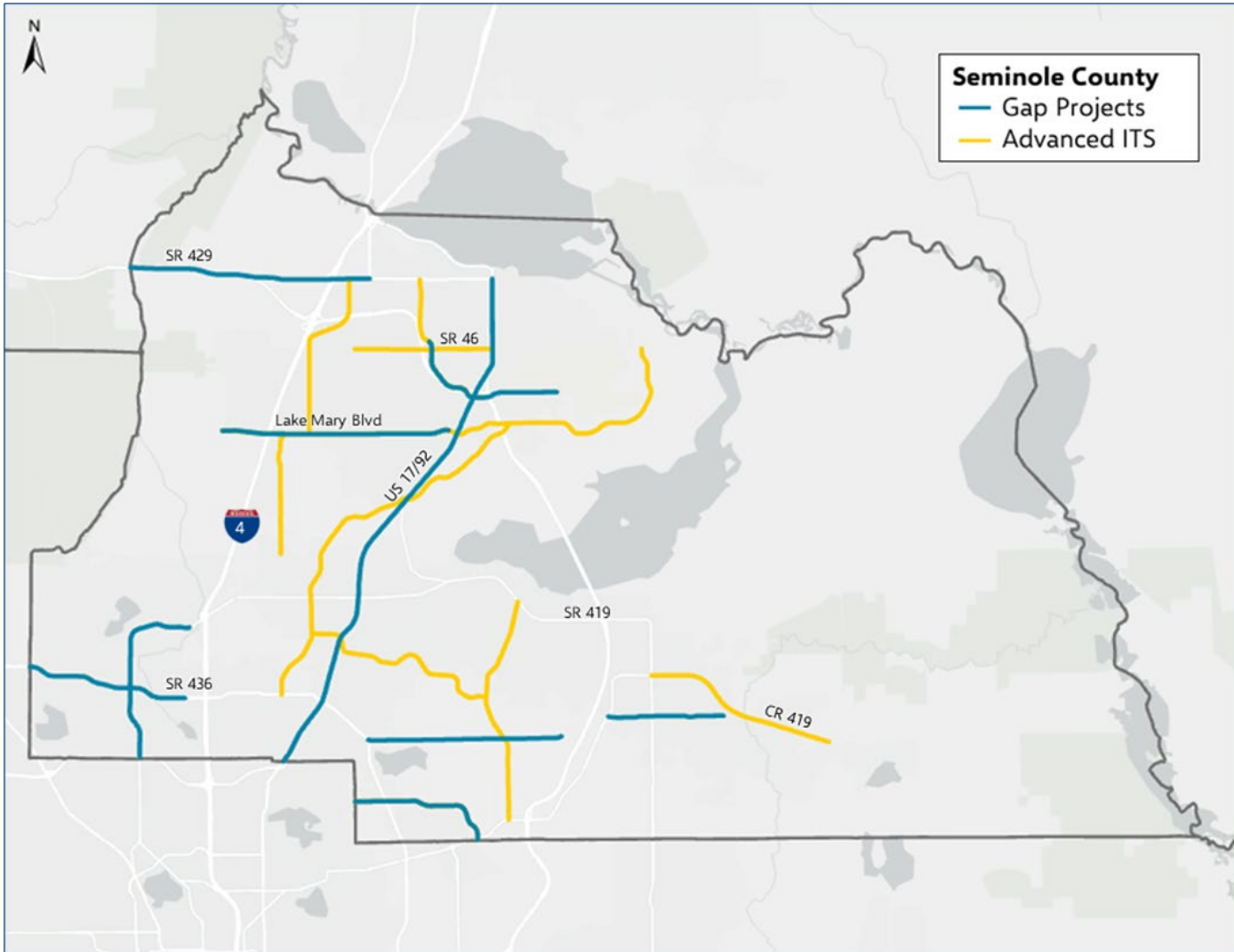
---



- Address Gaps
- Advanced ITS Projects to Leverage Investments
- Intersection Analysis



# Top Priorities – Seminole County

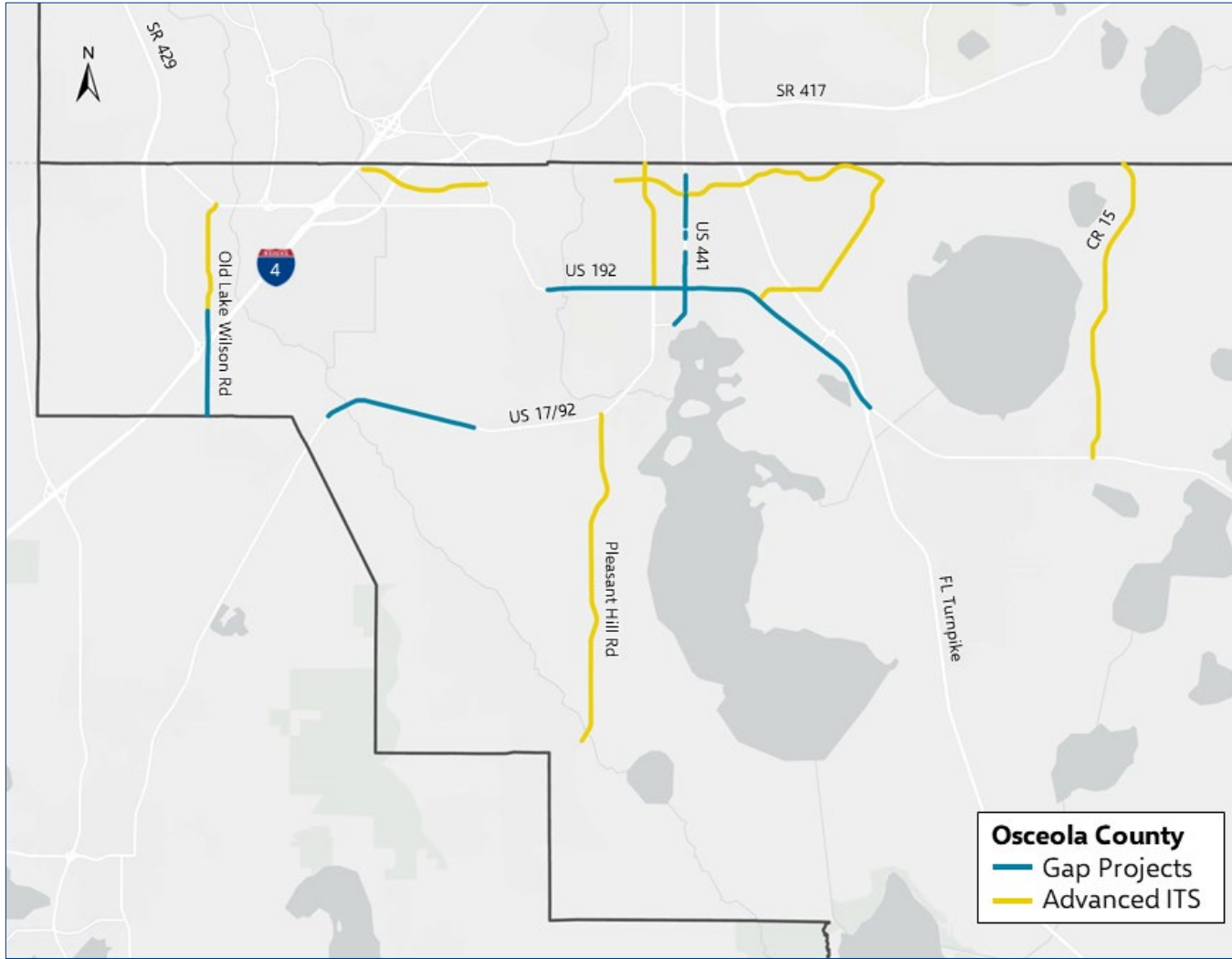


GAP PROJECTS	Project Limits	
	Start	End
SR 436	Orange County Limits (West)	Grace Boulevard
US 17/92	1 <sup>st</sup> Street	Orange County Limits
Lake Mary Boulevard	Markham Woods Road	Live Oak Boulevard
Howell Branch Road	Orange County Limits	Aloma Avenue
SR 46	Lake County Limits	US 17/92
Airport Boulevard	Martin Luther King Jr. Blvd	Airline Boulevard
SR 434	Maitland Boulevard	Sanlando Office Park
Red Bug Lake Road	Semorran Boulevard	Slavia Road
Mitchell Hammock Road	SR 426	Lockwood Boulevard
Lake Mary Boulevard	Markham Woods Road	Volusia County Limits

ADVANCED ITS	Project Limits	
	Start	End
CR 4220 (Lake Mary Boulevard)	Markham Woods Road	SR 46
CR 46A (H E Thomas Parkway/W 25th Street)	S Orange Avenue	US 17/92
CR 427 (Reagan Boulevard)	SR 436	Lake Mary Boulevard
CR 4242 (Seminola Boulevard/Dog Track Road)	Ronald Reagan Boulevard	Tuskawilla Road
Howell Branch Road	Lake Howell Road	SR 426
CR 431B (Rinehart Road)	Lake Mary Boulevard	SR 46
CR 425 (Airport Blvd/Martin Luther King, Jr. Blvd)	Southgate Road/Windleshore Way	US 17/92
CR 4281 (Tuskawilla Road)	SR 426	SR 434
CR 4237 (Lake Emma Road)	Longwood Hills Road	Lake Mary Boulevard
CR 419 (E Broadway Street)	N Central Avenue	Sterling Creek Parkway/Snow Hill Road



# Top Priorities – Osceola County



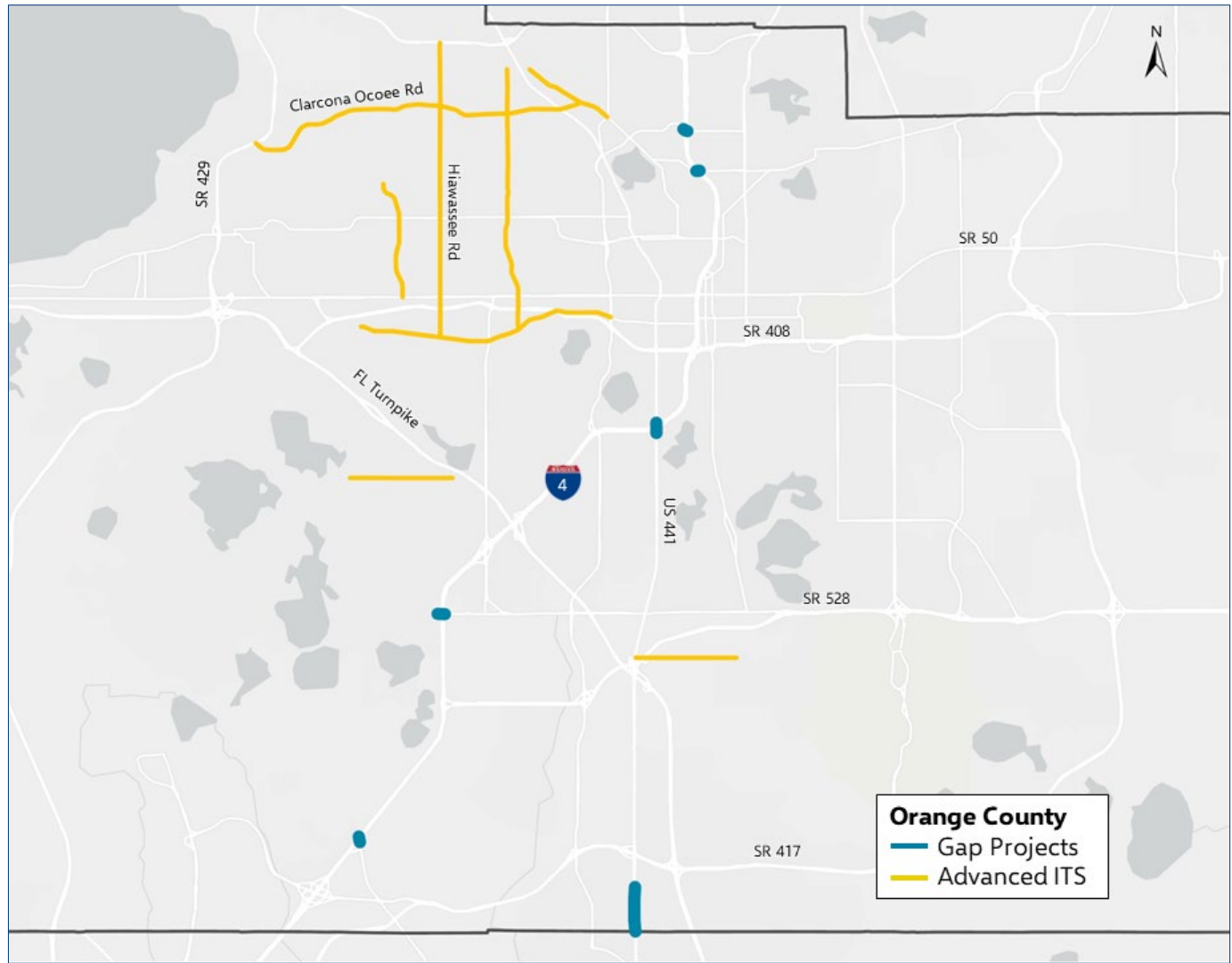
GAP PROJECTS	Project Limits	
	Start	End
US 441 (Orange Blossom Trail)	North of Whitney Street	South of Fletcher Street
US 441 (Orange Blossom Trail)	South of Carroll Street	SR 522 (Osceola Parkway)
US 192 (Vine Street)	Old Vineland Road/Bass Road	Florida Turnpike Interchange/Cross Prairie
Main Street	North of Cypress Street	South of Hilda Street
US 17/92	Poinciana Boulevard	CR 532
US 192 (Irlo Bronson Memorial Highway)	Denn John Lane/NeoCity Way	-
US 441 (Orange Blossom Trail)	North of Osceola Parkway	South of Orange County Limits
Main Street	Columbia Avenue	Ruby Avenue
Old Lake Wilson Road	Sinclair Road	CR 532
US 192 (Irlo Bronson Memorial Highway)	St. Cloud Commons/Turnpike Ramp	-

ADVANCED ITS	Project Limits	
	Start	End
CR 530 (Simpson Road)	US 192	Osceola Parkway
CR 522 (W Osceola Parkway)	Dyer Boulevard	Simpson Road
CR 525 (N John Young Parkway)	US 192	North of Thacker Avenue
CR 531 (Pleasant Hill Road)	Old Pleasant Hill Road	US 17/92
CR 522 (W Osceola Parkway)	I-4 EB Off-Ramp	CR 535
CR 15 (Narcoossee Road)	US 192	Boggy Creek Road
CR 545 (Old Lake Wilson Road)	Sinclair Road	US 192





# Top Priorities – Orange County

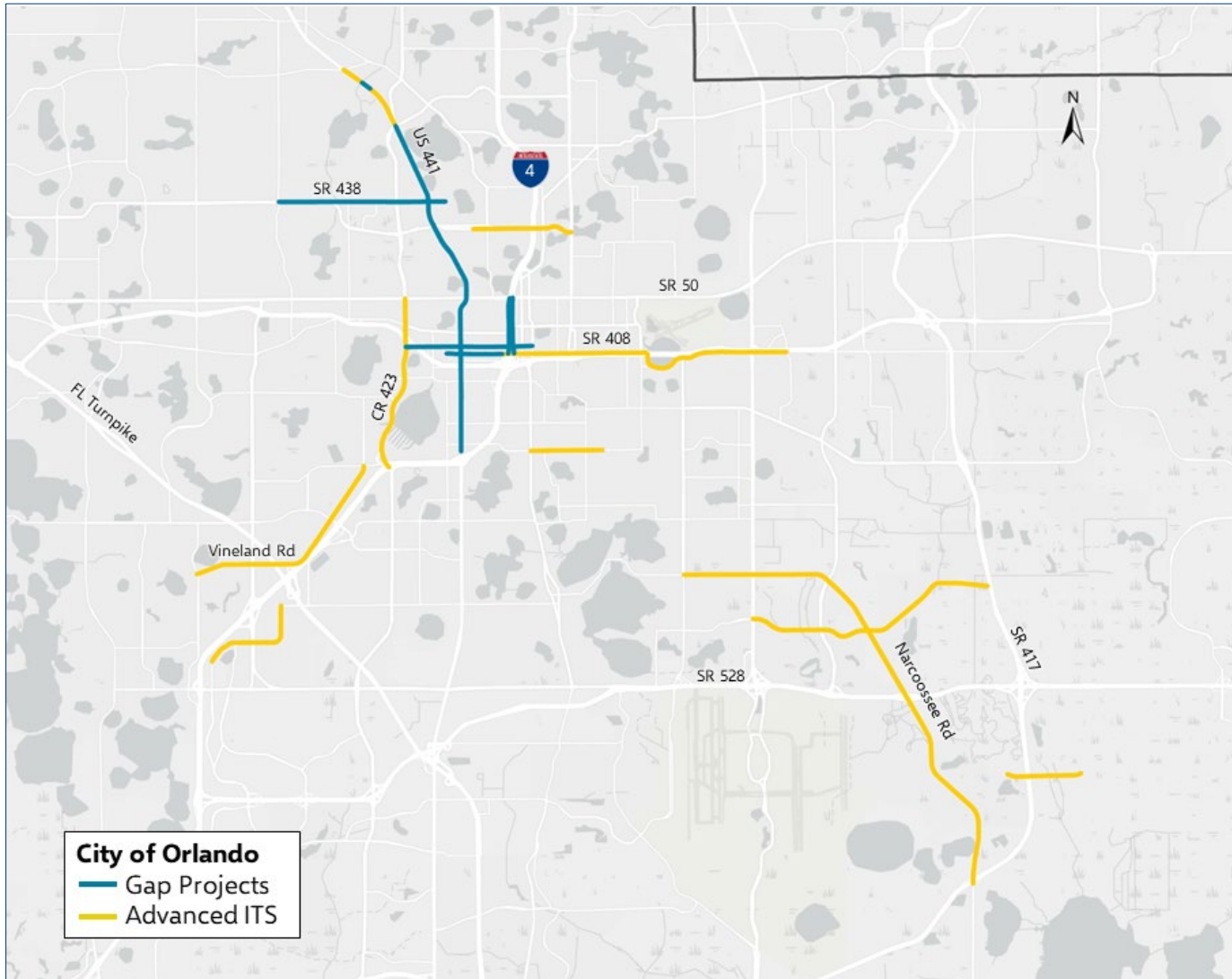


GAP PROJECT BUNDLE	Project Roadway	Project Limits	
		Start	End
A	US 441	Hunters Creek Blvd	Osceola County Limits
B	I-4 Southern Ramps	US 441 North	US 441 South
	I-4 Southern Ramps	SR 535 Off-Ramp	SR 535 On-Ramp
	I-4 Southern Ramps	SR 482/Sand Lake Rd SB Off Ramp	SR 482/Sand Lake Rd NB Off-Ramp
	I-4 Northern Ramps	Lee Rd SB Off-Ramp	Lee Rd NB On-Ramp
	I-4 Northern Ramps	Fairbanks Ave SB Off/On Ramp	Fairbanks Ave NB On/Off Ramps

ADVANCED ITS BUNDLE	Project Roadway	Project Limits	
		Start	End
A	US 441	Hunters Creek Boulevard	Osceola County Limits
	CR 526 (Old Winter Garden Road)	Good Homes Road	John Young Parkway
	CR 435 (Hiawassee Road)	Old Winter Garden Road	Maitland Boulevard (SR 414)
	CR 437 (Clarcona Ocoee Road)	SR 429	Edgewater Drive
	CR 424 (Edgewater Drive)	Rose Avenue	Forest City Road
	CR 439 (Conroy Windermere Road/Conroy Road)	S Apopka Vineland Road	Hidden Beach Boulevard
	CR 435 (Apopka Vineland Road)	SR 50 (Colonial Drive)	AD Mims Road
	CR 527A (Landstreet Road)	US 17	S Orange Avenue



# Top Priorities – City of Orlando



GAP PROJECTS	Project Limits	
	Start	End
Garland Avenue	South Street	SR 50 (Colonial Drive)
US 441 (Orange Blossom Trail)	Columbia Street	29 <sup>th</sup> Street
US 441 (Orange Blossom Trail)	Lee Road	Princeton Street
US 441 (Orange Blossom Trail)	Gore Street	Columbia Street
US 441 (Orange Blossom Trail)	City of Orlando Limit	City of Orlando Limit
South Street	Rio Grande Avenue	Division Street
Hughey Avenue	South Street	SR 50 (Colonial Drive)
SR 438/416 (Silver Star Road)	Pine Hills Road	Rio Grande Avenue
US 441 (Orange Blossom Trail)	Princeton Street	Gore Street
Church Street	John Young Parkway	Rosalind Avenue

ADVANCED ITS	Project Limits	
	Start	End
John Young Parkway	I-4	SR 50
South Street/Lake Underhill Road	Division Avenue	Oxalis Drive
US 441	Clarcona Ocoee Road	SR 423
Vineland Road	Turkey Lake Road	L B McLeod Road
Michigan Street	Orange Avenue	Homeland Street
Narcoossee Road	417 EB Off-Ramp	Conway Road
International Drive	Orange County Limits	Oak Ridge Road

# Intersection Analysis

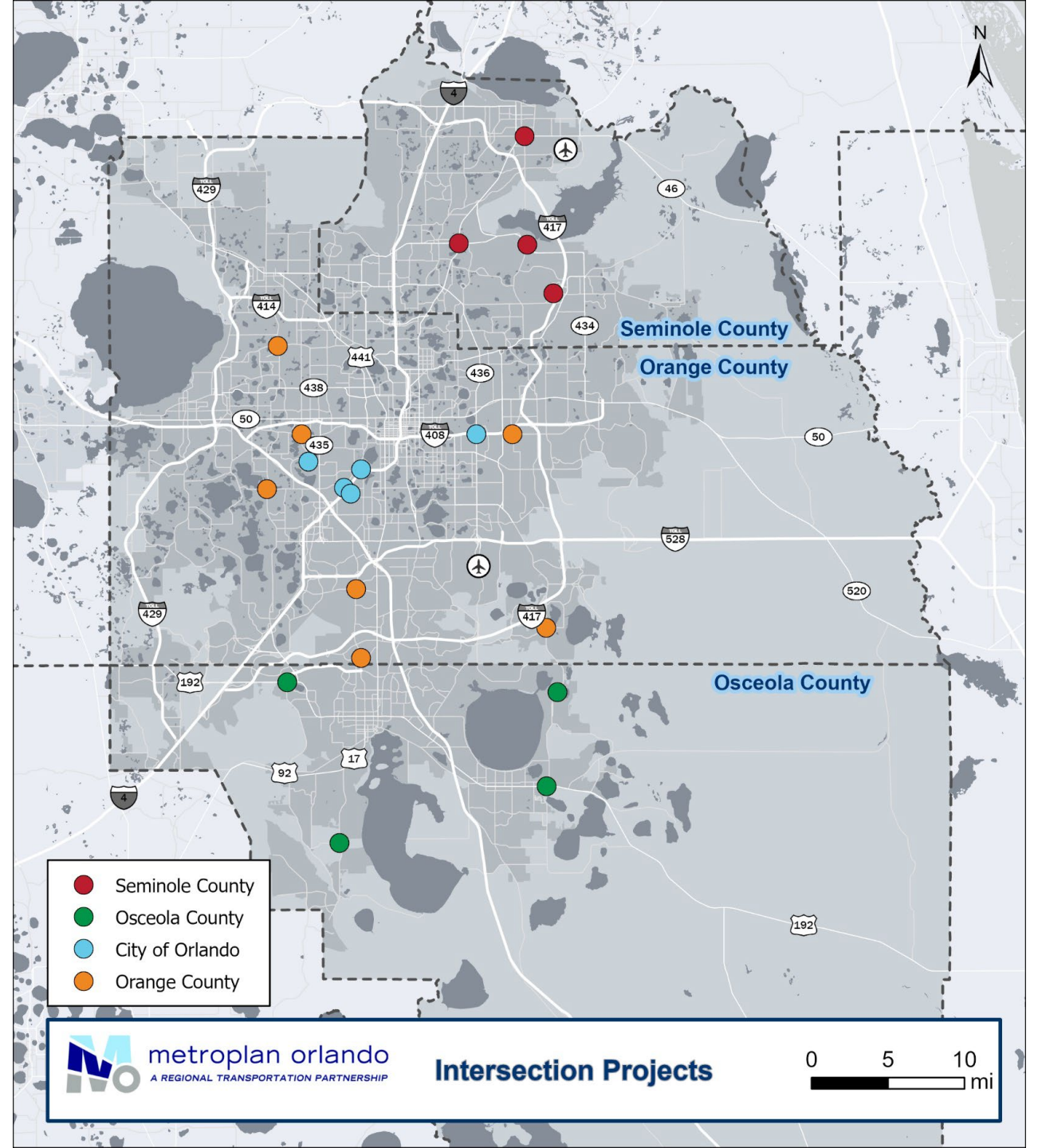
Seminole County – 4

Osceola County – 4

Orange County – 7

City of Orlando – 5

*Prioritization criteria is same excluding:  
Volume-to-capacity; Regional Project;  
and Stop Density (under Access &  
Connectivity)*





# Path Forward

- Regional Strategies
- Further considerations
  - Active Transportation Plan
  - Vision Zero Central Florida Effort
  - Artificial Intelligence (AI)





# We Want to Hear From You



TSM&O Master Plan Summary Document  
Appendix 1: Documentation Review  
Appendix 2: Existing Conditions Review  
Appendix 3: RITSA Review  
Appendix 4: Needs Assessment  
Appendix 5: Prioritization Matrix  
Appendix 6: Intersection Evaluation  
Appendix 7: Project Strategies  
Appendix 8: Funding Guidance

**Provide comments through May 10**  
**[eric.hill@metroplanorlando.gov](mailto:eric.hill@metroplanorlando.gov)**





# Questions? Thank you!

MetroPlanOrlando.org | 407-481-5672

Eric Hill | Director of TSM&O  
eric.hill@metroplanorlando.gov

