

Title VI Program: Nondiscrimination & Language Plan

October/November 2018



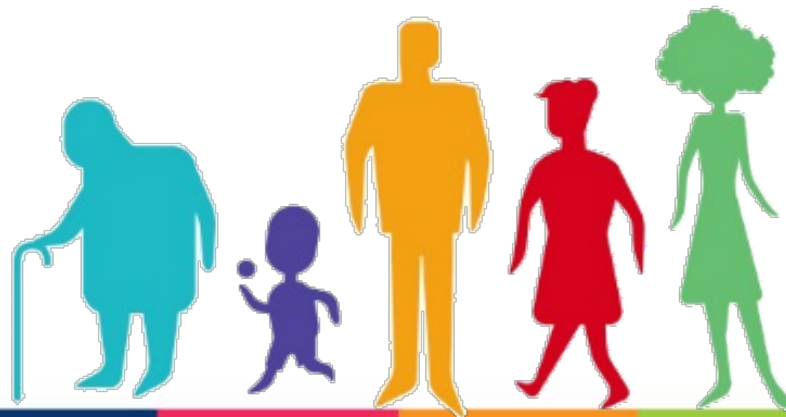
MetroPlan Orlando
welcomes public
participation in the
transportation planning
process regardless of
race, color, national
origin, age, sex,
religion, disability, or
family status.



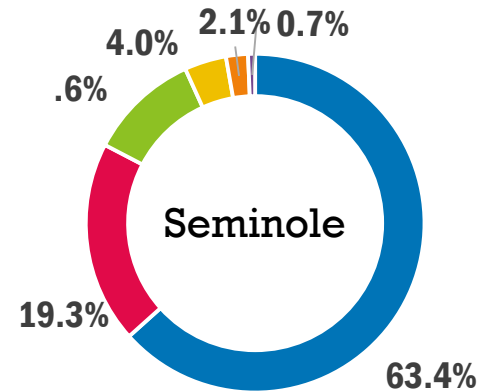
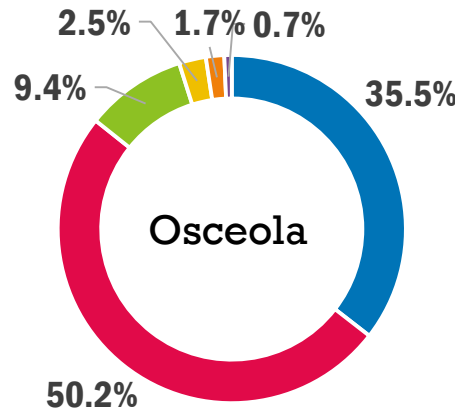
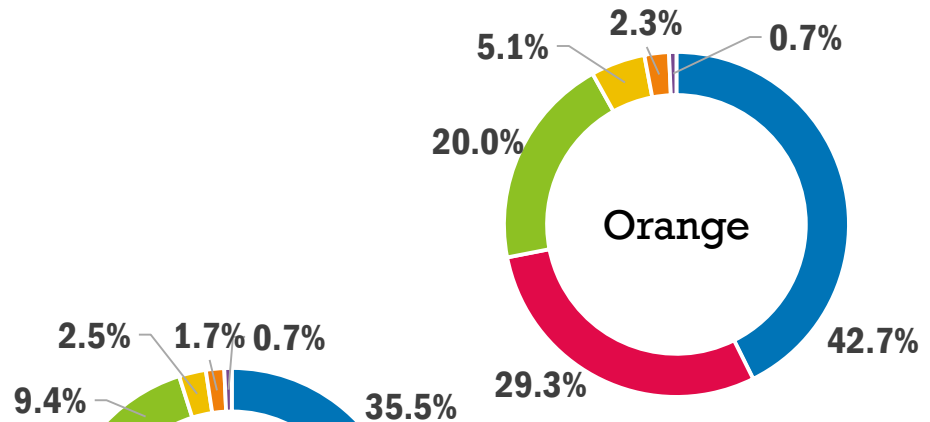
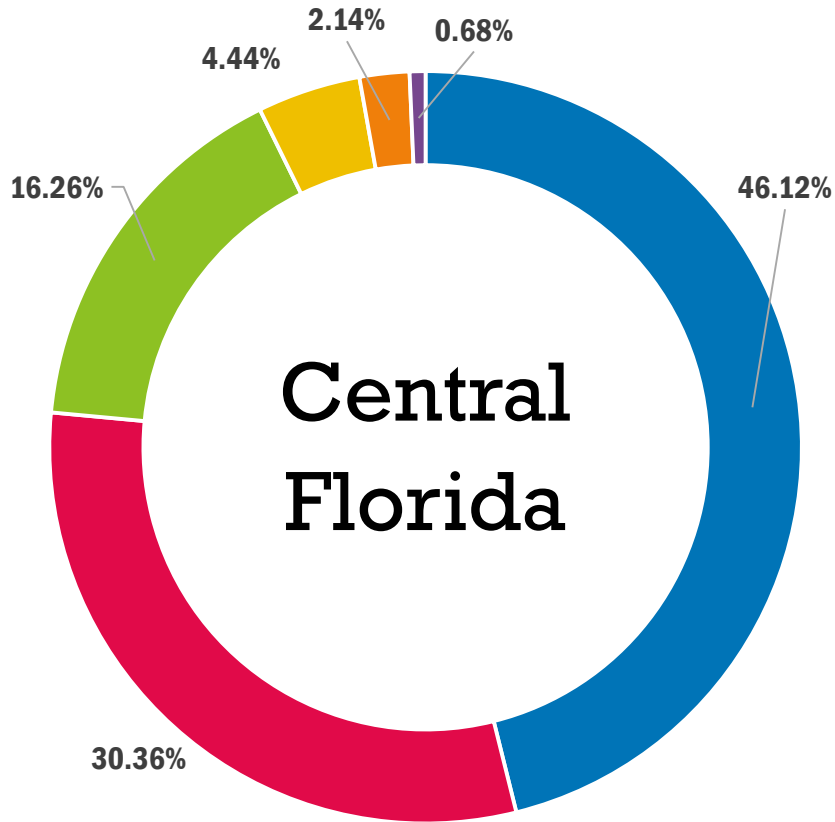
A Commitment to Nondiscrimination



- Comply with federal & state requirements
- Demographic information for the region, emphasis on underserved
- Reaching limited English proficiency persons
- Language assistance plan

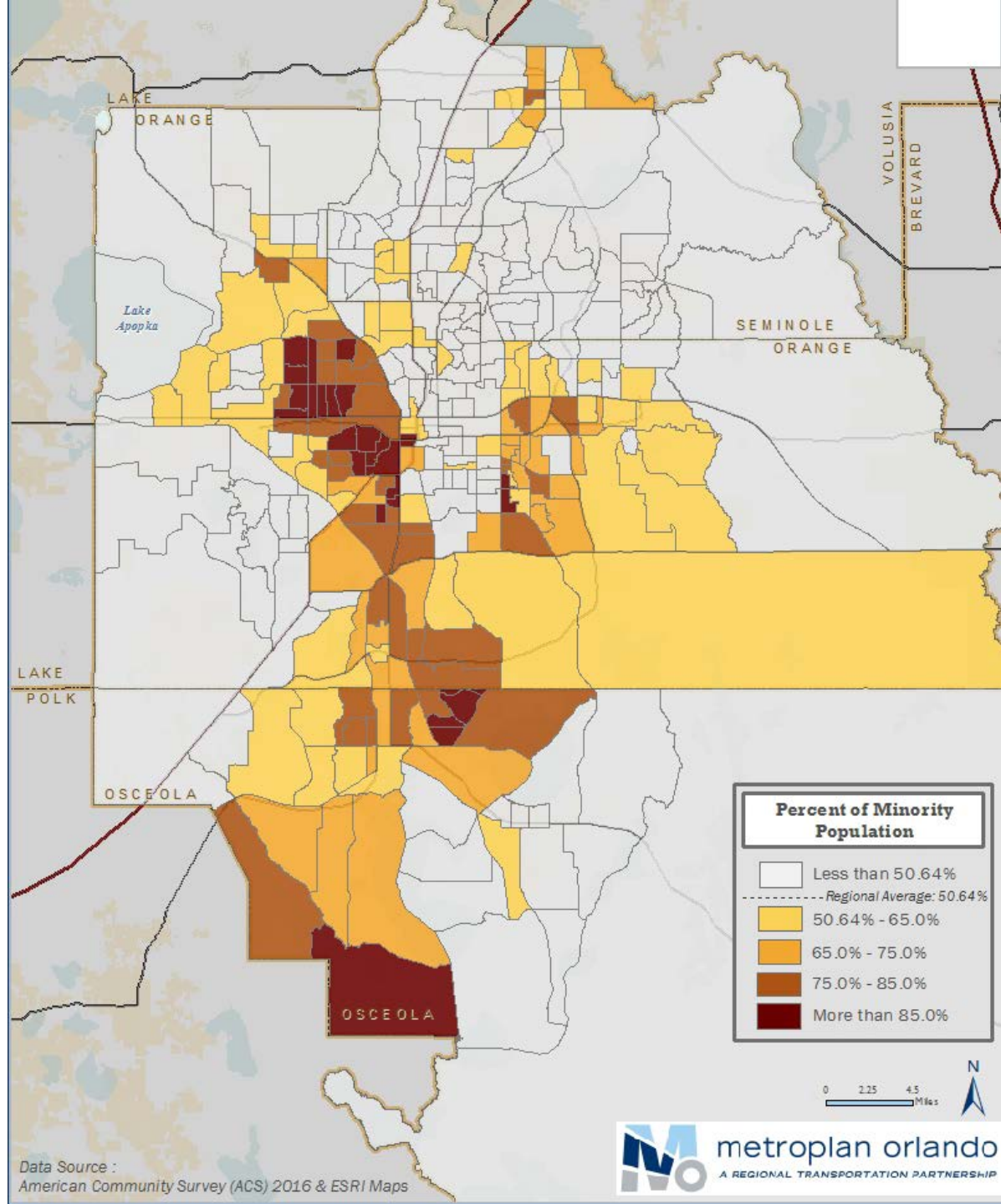


A Majority-Minority Region



■ White ■ Hispanic ■ Black ■ Asian ■ 2 or More Races ■ Other

Percentage of Minority Population



Underserved Populations

15.03%
households
below poverty

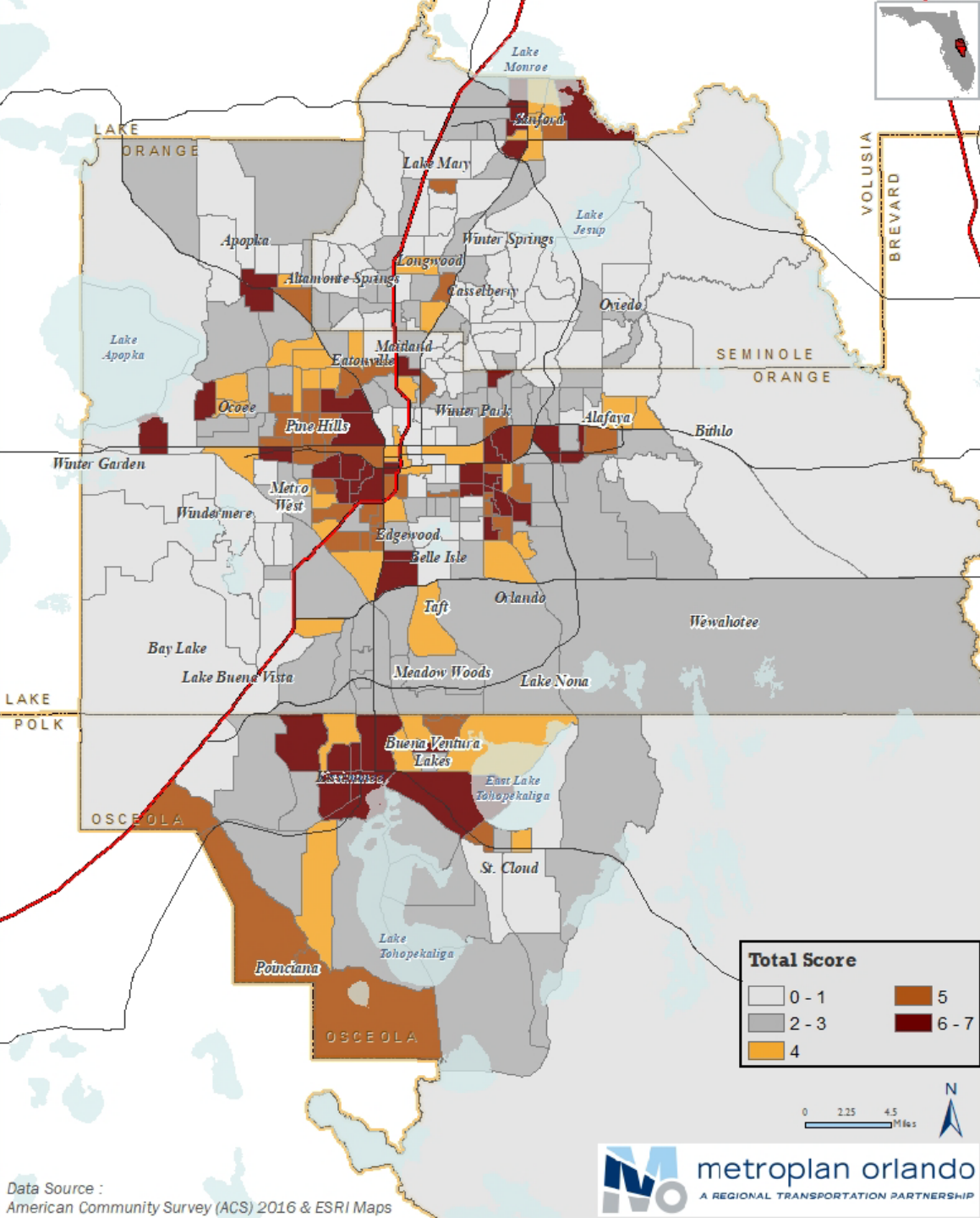
5.78%
households
with no vehicle

9.53%
female HOH w/
child under 18

8.9%
persons with a
disability

11.81%
age 65+

4.84%
age 75+



Environmental Justice Focus Areas

Limited English Proficiency



Region: 12.1%

Orange:
12.8%

Osceola:
18.3%

Seminole:
12.1%



Thank You

MetroPlanOrlando.org | (407) 481-5672
250 S. Orange Ave., Suite 200, Orlando, FL 32801

