

UPDATE OF THE FLORIDA TRANSPORTATION PLAN

presented to
Metroplan Orlando - TAC

presented by
Judy Pizzo, M.S.URP

October 25, 2019




WHAT IS THE FLORIDA TRANSPORTATION PLAN?

- ▶ Florida's long range transportation plan
- ▶ A plan for all of Florida
- ▶ Provides policy guidance for all transportation partners
- ▶ Establishes a policy framework for expenditure of state and federal transportation funds




WHY DOES THE FTP MATTER?




GUIDING TRANSPORTATION DECISIONS
TODAY





TO ACHIEVE OUR VISION FOR
TOMORROW




4



FTPs HAVE RESHAPED FLORIDA

	<p>▸ 2020 FTP (2000)</p> <ul style="list-style-type: none"> » Creation of Strategic Intermodal System 		<p>▸ 2060 FTP (2010)</p> <ul style="list-style-type: none"> » Alignment with Florida Strategic Plan for Economic Development » Investments in trade and logistics; FMTP » Maximizing use of existing facilities (e.g. managed lanes) » Future Corridor Planning Process
	<p>▸ 2025 FTP (2005)</p> <ul style="list-style-type: none"> » Emphasis on regional visioning and collaboration 		
	<p>▸ Current FTP (2015)</p> <ul style="list-style-type: none"> » Added 'Choices' as a new Goal » Renewed emphasis on Safety and alignment with the SHSP 	<ul style="list-style-type: none"> » Greater emphasis on Workforce » Greater focus on implementation 	

5



FLORIDA TRANSPORTATION PLAN



Vision Element

Trends, uncertainties, and themes that will shape the future of transportation in Florida (50 years)



Policy Element

Goals and objectives to guide the Florida Department of Transportation and partners toward the vision (25 years)



Implementation Element

Emphasis areas with key actions (5-25 years)



FTP GOALS & CROSS-CUTTING TOPICS

	Technology	Resilience	Statewide and Interregional	Regional and Local
Safety and security				
Agile, resilient, and quality transportation infrastructure				
Efficient and reliable mobility				
More transportation choices				
Economic competitiveness				
Quality places to live, learn, work, and play				
Florida's environment and energy conservation				



FTP GOALS & CROSS-CUTTING TOPICS

Technology

- » Automated, connected, electric & shared vehicles
- » Transportation system management & operations
- » Big data
- » New materials & processes

Resilience

- » Extreme weather events
- » Emergency evacuation & emergency response
- » Sea level rise, flooding
- » Economic or societal changes

Statewide and Interregional

- » SIS, including modal facilities
- » Trade & logistics
- » Multi-use/ multi-modal facilities
- » Global, statewide, interregional connectivity

Regional and Local

- » Urbanized, non-urbanized, rural
- » Congestion relief
- » Land use/ community planning
- » Regional visions

8



FTP SUBCOMMITTEES

▮ 2 subcommittees

- » Automated, Connected, Electric, and Shared (ACES)
 - <http://www.floridatransportationplan.com/aces.htm>
- » Resilience
 - <http://www.floridatransportationplan.com/resilience.htm>

▮ Representatives of the steering committee organizations make up the members

▮ Others are able to become “friends” of the subcommittees

- » Receive updates on subcommittee activities
- » Attend and participate at meetings

▮ Become a friend of the subcommittees and stay engaged

9





RELATED PARTNER EFFORTS

- ▶ **Metropolitan Planning Organizations (MPOs)**
 - » Long Range Transportation Plans
- ▶ **State Agency Plans/Initiatives**
 - » DEO, DEP, Enterprise Florida, Space Florida, etc.
- ▶ **Local Governments**
 - » Comprehensive Plans, etc.
- ▶ **Regional Planning Councils**
 - » Strategic Regional Policy Plans
- ▶ **Modal Partners**
 - » Transit, expressway, seaport, airport and other authorities
- ▶ **Regional and Community Visions**



SHARING OUR IDEAS

▶ Poll Everywhere – multiple ways to access the polls:

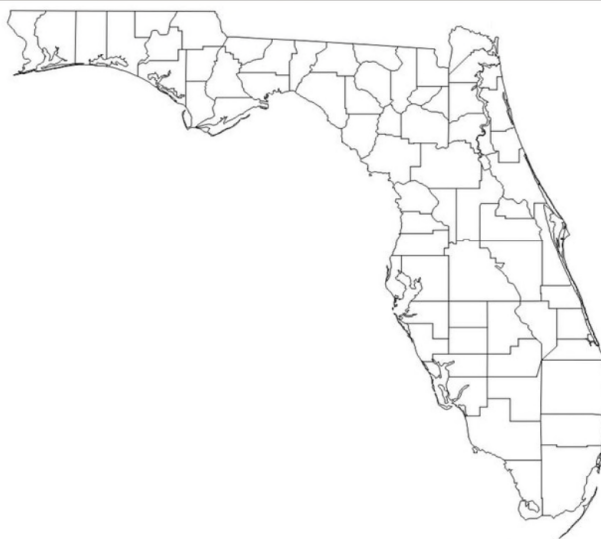
- » Visit www.pollev.com/FTP2045 from your phone, tablet, or laptop to access the polling questions
- » Text “FTP2045” to 22333 to join the poll and respond to the polls via text message
- » Scan the QR code to the right to go directly to the website
- » Important note: A record of the poll responses will be kept for statutory records retention requirements



12



Where do you live? (select on map)



Start the presentation to see live content. Still no live content? Install the app or get help at PollEv.com/app

Who do you represent?

City/County
Government

MPO/RPC/TPO

Other State Government

Private Industry Partner

Private Citizen

Non-Governmental
Industry Organization

Start the presentation to see live content. Still no live content? Install the app or get help at PollEv.com/app

Choose the top trend affecting the FTP

Increase in ride sharing

New micromobility options

Fewer gas-operated vehicles

Growth in e-commerce

Rate of adoption of AV/CV

Start the presentation to see live content. Still no live content? Install the app or get help at PollEv.com/app

What else will change in our lives due to new technology?

Start the presentation to see live content. Still no live content? Install the app or get help at PollEv.com/app

In your opinion, what is the greatest challenge for Florida to overcome related to changing technology and our transportation system?

- Regulatory barriers
- Rapid rate of development and adoption of new technologies
- Integrating old/existing and new/emerging technologies in the same system at the same time
- Planning and design challenges
- Data security and privacy

Start the presentation to see live content. Still no live content? Install the app or get help at PollEv.com/app

What are effective strategies to prepare our transportation system for changes in technology?

Start the presentation to see live content. Still no live content? Install the app or get help at PollEv.com/app

What is the top trend or disruptor affecting Florida's transportation system?

- Extreme Heat
- Flooding
- Hurricanes / Extreme Storms
- Poor or Inoperable Infrastructure
- Sea Level Rise
- Storm Surge
- Technology Interruption or Failure

Start the presentation to see live content. Still no live content? Install the app or get help at PollEv.com/app

What are the benefits of planning for a resilient transportation system?

Start the presentation to see live content. Still no live content? Install the app or get help at PollEv.com/app



What are some of the challenges for Florida to overcome to increase the resilience of the transportation system?

Start the presentation to see live content. Still no live content? Install the app or get help at PollEv.com/app




What are effective strategies that could be implemented as part of the Florida Transportation Plan to make Florida's transportation system more resilient?


Start the presentation to see live content. Still no live content? Install the app or get help at PollEv.com/app




WHAT WILL WE DO WITH YOUR INPUT?



Input is received at meetings, online, through survey, etc.

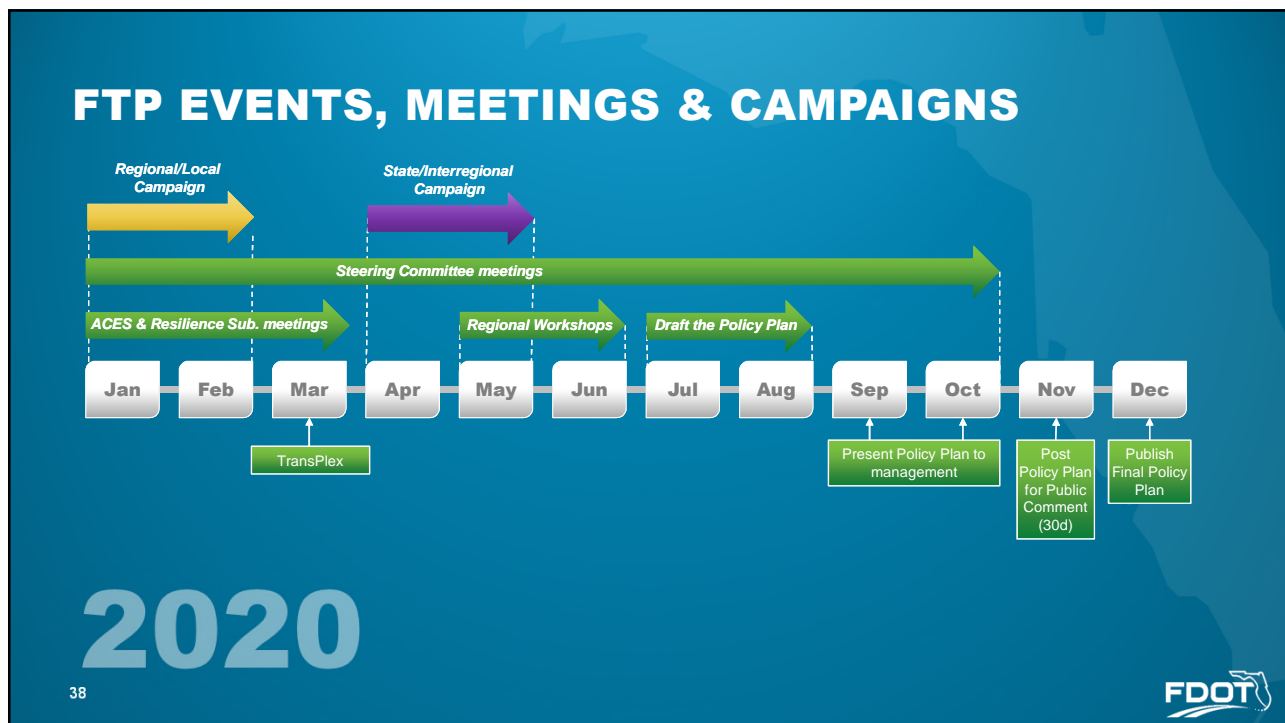
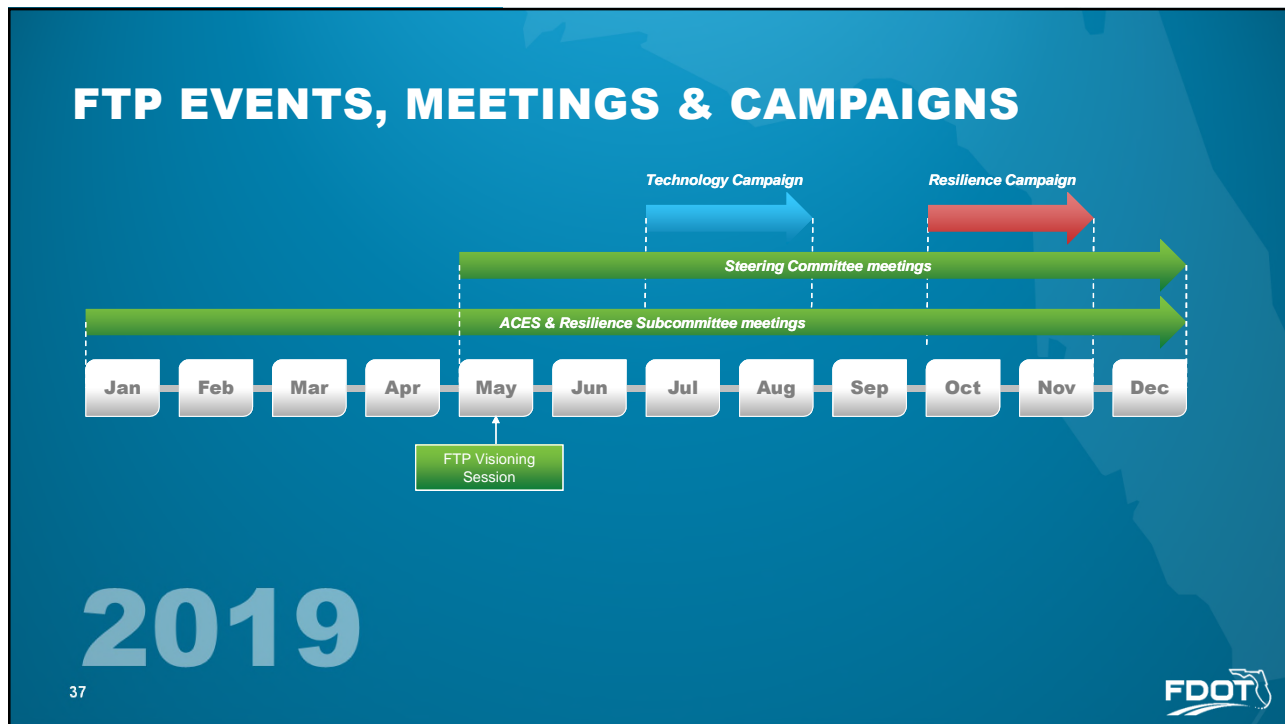


Provided to the FTP Steering Committee and Subcommittees for review and consideration



Based on applicability, your input is used to shape the plan





STAY CONNECTED

The screenshot shows the Florida Department of Transportation website. At the top, there is the FDOT logo and the text "Florida Department of TRANSPORTATION". A search bar is visible with the text "Search FDOT...". Below the logo, there is a navigation menu with links for Home, About FDOT, Contact Us, Maps & Data, Offices, Performance, and Projects. The main content area is titled "Florida Transportation Plan (FTP)" and includes a "Summary" section. On the left, there is a sidebar with various links under "FTP Overview" and "Get Involved". The main content area features a "Florida Transportation Plan Overview" section with a video player and a list of key points. At the bottom of the screenshot, the website URL "www.floridatransportationplan.com" and the FDOT logo are displayed.

39

QUESTIONS?

JUDY PIZZO

District 5

Florida Department of Transportation

Judy.Pizzo@dot.state.fl.us

386-943-5167

www.fdot.gov/planning/policy

