

CENTRAL FLORIDA
MPO
ALLIANCE

Regional Indicators

A Report on Transportation System
Indicators for the Central Florida MPO Alliance

June 2013



Table of Contents

EXECUTIVE SUMMARY

BACKGROUND.....	2
Key Findings	2
About the CFMPO Alliance	3

REGIONAL PROFILE

Population	5
Employment and Unemployment	6
Hotel/Motel Rooms.....	7
Licensed Drivers	7
Registered Vehicles	8

HIGHWAY STATISTICS

Local Road Mileage.....	9
State Road Mileage.....	9
Vehicle Miles Traveled.....	10
Gasoline Consumption and Pricing	11
Diesel Consumption and Pricing	12
Major Roadway Traffic Counts	13

HEALTH AND SAFETY STATISTICS

Automobile Safety.....	20
Pedestrian Safety.....	21
Bicyclist Safety.....	22
Air Quality Monitoring	23

TRANSIT STATISTICS

LYNX	24
LakeXpress.....	24
Space Coast Area Transit.....	25
Votran	26
Citrus Connection	26
Polk County Transit Services	27
Sun Tran.....	27

AVIATION, RAIL, SEA, AND SPACE PORT STATISTICS

Orlando International Airport (MCO)	29
Orlando-Sanford International Airport (SFB)	30
Melbourne International Airport (MLB)	30
Daytona Beach International Airport (DAB)	31
Passenger Rail Service	32
Port Canaveral	33
Space Launches	34



Executive Summary

Transportation is a critical part of our lives. The quality of life and the economic vitality of our communities depend on an individual's access to work, education, health services and other destinations. The condition of our roads, walkways, transit, runways, and other transportation features directly affects the well being of our businesses and residents, as well as visitors.

The Central Florida Metropolitan Planning Organization Alliance (CFMPOA) is a coalition of Metropolitan Planning Organizations (MPOs) and Transportation Planning Organizations (TPOs) committed to addressing transportation challenges on a regional basis. The purpose of this report is to provide an overview of the transportation systems within the CFMPOA region and how they are affected by conditions such as the economy, population growth, technology, travel behavior, and funding. The goal is to assist CFMPOA region's policymakers and planning entities by disseminating information about key factors and emerging issues that impact Central Florida's transportation needs.

Methodology

This report was prepared by Metroplan Orlando staff to establish a solid foundation of data to inform future policy decisions. The Regional Indicators report includes the latest data and information available at the time of publication for the various indicators used to measure transportation system activity over a five-year period. The beginning and ending years may vary for different indicators, depending on the data available.

Data was provided by several local and state agencies, including the Florida Department of Transportation, Florida's Turnpike Enterprise, and the Florida Department of Highway Safety and Motor Vehicles. Additional information was provided by the Florida Energy Office, the Florida Department of Environmental Protection, the Florida Department of Business and Professional Regulation, and the Florida Department of Revenue.

Local agencies that provided information include the Orlando-Orange County Expressway Authority, Central Florida Regional Transportation Authority (LYNX), LakeExpress, Space Coast Area Transit, Votran, Citrus Connection, Polk County Transit Services, Sun Tran, Greater Orlando Aviation Authority, Sanford Airport Authority, Kissimmee Gateway Airport, Melbourne International Airport, and the Daytona Beach International Airport. The Federal Aviation Administration, Amtrak, the U.S. Census Bureau, the University of Florida's Bureau of Economic and Business Research, the Florida Agency for Workforce Innovation, the Texas Transportation Institute, Space Florida and the Canaveral Port Authority provided additional information.

The CFMPOA would like to express appreciation to all these agencies for their assistance. The material contained in this report may be freely quoted with appropriate acknowledgement.

Key Findings

The 2008-2012 Regional Indicators report identifies several major trends and travel implications for the CFMPOA region. These include a growing and more diversified population; increasing visitor impact; aging infrastructure; concerns with pedestrian and bicyclist safety; and volatile revenues. This Executive Summary outlines the areas addressed in *Regional Indicators* and highlights some key findings.

Demographics

As of 2012, the population of the CFMPOA region had grown to 4,257,433, a 1.3% increase over 2011. The median age continues to increase -- up to 43.5 in 2011, compared to 43.7 in 2010. The 18-24 age group is the biggest, which could be attributed to a large number of higher-education campuses in our area and high employment in the arts, entertainment, and tourism sectors. (Chapter 1)

Visitor Impact

The area saw definite signs of economic recovery. Tourism in the region was impressively strong in 2012, setting a record. The area hosted 55.1 million visitors, an increase of 7.2 % over the same period last year, or an increase of 3.7 million visitors. (Chapter 1)

During that same period, Central Florida's major airports and seaport reported a moderate boost in passenger counts, which also reflects healthy tourism in the state. Although Orlando International Airport saw a slight decrease of 0.4%, Orlando-Sanford International Airport experienced a strong increase of 15.1%. Port Canaveral saw an increase of 859,000 passengers, up 27.3% over the same period last year. (Chapter 5)

Travel Trends

The local economy was still looking for the signs of recovery normally reflected in area travel trends. In 2011, the CFMPO region continued to see a decrease in the number of vehicles miles traveled, with a 3.3% decrease, or 4.1 million fewer miles. The average daily traffic count on I-4 continued to decrease as well, down by 4.1%, or 109,314 fewer vehicles on the road. Meanwhile, I-95 saw similar decreases with a 10% drop, or 90,571 fewer vehicles. (Chapter 2)

Safety

Safety continues to be a factor that needs improvement in our transportation system. The area experienced a 15.1% increase in vehicular crashes between 2008 and 2012. Pedestrian injuries increased by 15.4% during this time period, and bicyclist injuries increased by 34.9%. However, the area also has recorded some improvements in safety numbers. Vehicular fatalities saw a decrease of 9.7% between 2011 and 2012, and an even larger decrease of 30.6% occurred between 2008 and 2012. Pedestrian and bicyclist fatalities experienced a decline of 23.6% and 20%, respectively, between 2011 and 2012. (Chapter 3)

About Us

The Central Florida Metropolitan Planning Organization (MPO) Alliance is a coalition of transportation and government organizations committed to addressing transportation challenges on a regional basis. The group is made up of representatives from the nine-county Central Florida region.

The Alliance has a policy board of eighteen members, three from each of the six member organizations. Representatives from the Florida Department of Transportation participate as well. The group meets quarterly and operates on the basis of consensus. Staff support is provided by MetroPlan Orlando. The Central Florida MPO Alliance has established goals and is seeking to maximize all opportunities presented by a regional transportation forum.

MPO/TPO Staff Contact Information

Lake-Sumter MPO

(Lake and Sumter Counties)

Mr. TJ Fish, Executive Director

1616 South 14th Street

Leesburg, Florida 34748

(352) 315-0170

www.lakesumtermpo.com

MetroPlan Orlando

(Orange, Osceola, and Seminole Counties)

Mr. Harold Barley, Executive Director

315 East Robinson Street, Suite 355

Orlando, Florida 32801

(407) 481-5672

www.metroplanorlando.com

Ocala/Marion TPO

(City of Ocala and Marion County)

Mr. Greg Slay, Executive Director

P.O. Box 1270

Ocala, Florida 34478

(352) 629-8297

www.ocalamariontpo.org

Polk TPO

(Polk County)

Mr. Thomas Deardorff, Director

P.O. Box 9005; Drawer TS05

Bartow, Florida 33831

(863) 534-6486

www.polktpo.com

Space Coast TPO

(Brevard County)

Mr. Bob Kamm, Executive Director

2725 Judge Fran Jamieson Way, Bldg. B, MS 82

Viera, Florida 32940

(321) 690-6890

www.spacecoasttpo.com

Volusia County TPO

(Volusia County and the Cities of Flagler Beach and Beverly Beach within Flagler County)

Lois Bollenback, Executive Director

2570 W. International Speedway Blvd., Ste. 100

Daytona Beach, Florida 32114

(386) 226-0422

www.volusiatpo.org

CFMPOA Regional Profile

The Central Florida MPO Alliance Area, which consists of Brevard, Lake, Marion, Orange, Osceola, Polk, Seminole, Sumter, and Volusia Counties, has continuously grown from 1993 through 2008. The economic recession slowed down growth from 2009 through 2011, but we are seeing signs of increased population growth for 2012.

Historically, the area's economy has largely been centered on the health care and social services, retail trade, and accommodations and food services sectors. The medical and high tech industries have had a strong presence in the area with employers such as Florida Hospital, Adventist Health, Orlando Health, Health First, Halifax Health, Harris Corporation, United Space Alliance, and Lockheed Martin. Other major employers include Wal-Mart and Publix Supermarkets as well as Walt Disney, Universal, and Busch Entertainment.

Population

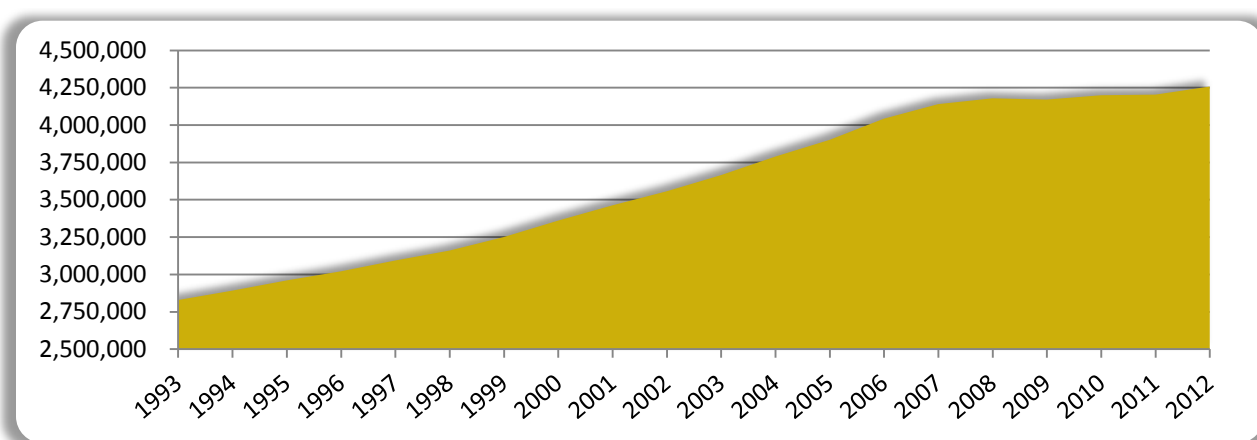
This table shows population figures for the counties within the CFMPOA region from 2008 through 2012.

Population	2008	2009	2010	2011	2012
Brevard County	556,213	555,657	543,376	543,700	545,625
Lake County	288,379	291,993	297,052	297,336	299,677
Marion County	329,418	330,440	331,298	327,221	322,989
Orange County	1,114,979	1,108,882	1,145,956	1,154,852	1,175,941
Osceola County	273,709	272,788	268,685	273,452	280,866
Polk County	585,733	584,343	602,095	601,249	606,888
Seminole County	426,413	423,759	422,718	424,422	428,104
Sumter County	93,034	95,326	93,420	87,604	100,198
Volusia County	510,750	507,105	494,593	493,593	497,145
CFMPOA Region	4,178,628	4,170,293	4,199,193	4,203,429	4,257,433

Source: University of Florida, Bureau for Economic and Business Research (BEBR)

Historic Population Overview for the CFMPOA Region

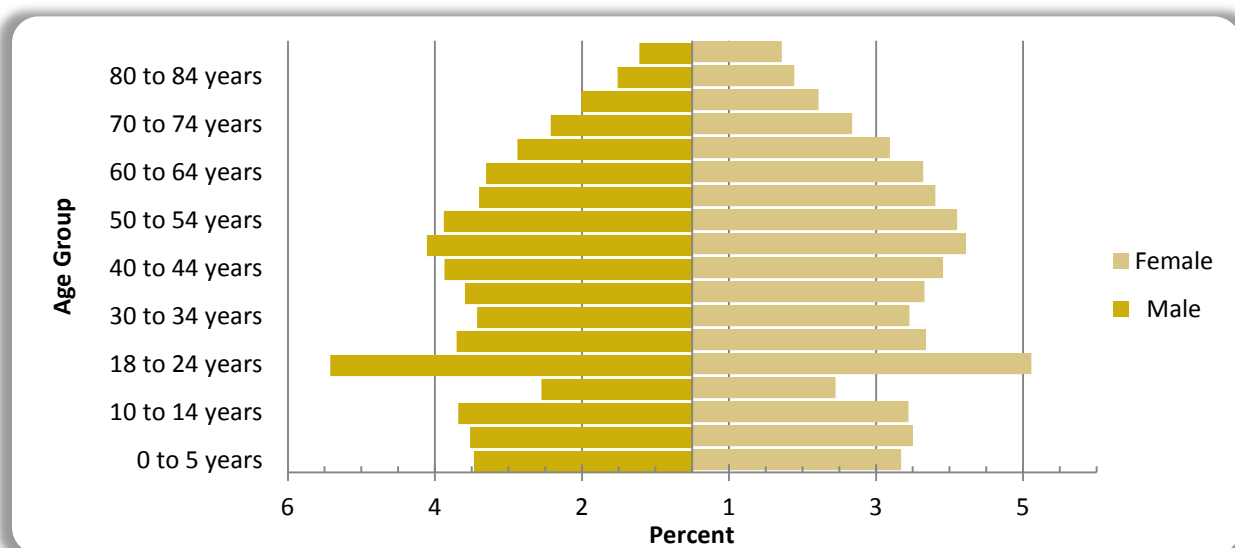
This graph illustrates the 20-year population trend total for Brevard, Lake, Marion, Orange, Osceola, Polk, Seminole, Sumter, and Volusia Counties - the CFMPOA region.



Source: University of Florida, Bureau for Economic and Business Research (BEBR)

CFMPOA Area Population by Age Group

This pyramid shows the male-female breakdown for the CFMPOA Area population. For both genders, the population in our area is largely young and middle-aged adults. The 18-24 age group is the biggest, which could be attributed to an abundance of higher-education campuses in our area and the large number of jobs in the arts, entertainment, and tourism fields.



Source: Source: U.S. Census Bureau - American Community Survey, *General Population and Housing Characteristic: 2011*

Employment & Unemployment Levels

Employment rates affect congestion on our roadways. In theory, the higher the employment rate, the more vehicles on the road. This increase may cause congestion and longer travel times. The following tables show the number of employed and unemployed persons living in the CFMPOA area from 2008 through 2012:

Persons Employed	2008	2009	2010	2011	2012
Brevard County	251,186	240,547	237,219	233,232	242,667
Lake County	128,042	121,540	121,121	122,882	116,861
Marion County	127,446	118,779	116,334	116,341	120,268
Orange County	567,860	537,363	535,509	543,294	572,602
Osceola County	129,323	124,019	123,591	125,388	124,398
Polk County	254,942	243,913	240,903	241,068	247,290
Seminole County	227,608	213,889	213,151	216,249	221,062
Sumter County	29,196	29,156	30,770	31,657	34,743
Volusia County	237,721	226,649	223,067	225,993	229,044
CFMPOA Region	1,953,324	1,855,855	1,841,665	1,856,104	1,908,935

Source: Florida Research and Economic Database, Local Area Employment Statistics (LAUS)

Unemployment

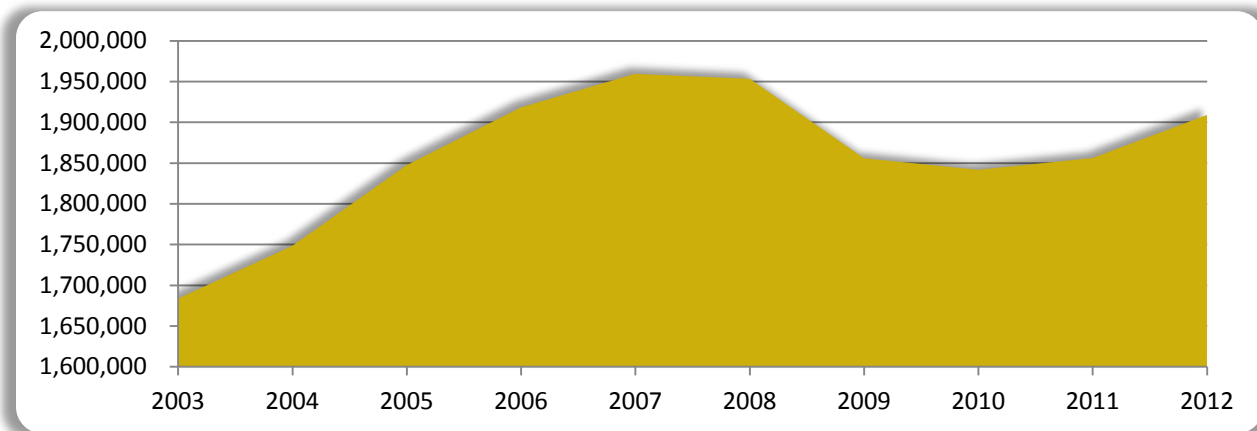
This table shows the unemployment rate in the CFMPOA area from 2008 through 2012:

Unemployment Rate	2008	2009	2010	2011	2012
Brevard County	6.5	10.2	11.1	11.1	9.3
Lake County	6.4	10.9	12.3	11.2	9.1
Marion County	7.8	12.5	13.4	12.3	10.0
Orange County	5.8	10.2	11.1	10.3	8.5
Osceola County	6.3	11.0	12.4	11.6	9.4
Polk County	6.7	11.1	12.2	11.6	9.7
Seminole County	5.6	9.7	10.5	9.7	7.9
Sumter County	5.6	9.0	9.8	8.5	7.0
Volusia County	6.5	10.6	11.5	10.8	8.9
CFMPOA Region	6.4	10.6	11.6	10.8	8.9

Source: Florida Research and Economic Database, Local Area Employment Statistics (LAUS)

Historic Employment Overview for the CFMPOA Region

This graph illustrates the 10-year employment trend total for the CFMPOA region.



Hotel / Motel Rooms

Both leisure and business/convention travel are important components of the region's economy. As a result, there are a large number and variety of hotels and motels. This table shows the number of hotel/motel rooms in the CFMPOA region from 2007/08 through 2011/12:

Room Capacity	2007/08	2008/09	2009/10	2010/11	2011/12
Brevard County	9,227	9,399	9,571	9,417	9,181
Lake County	2,948	2,996	3,054	2,989	2,989
Marion County	4,433	4,493	4,471	4,187	3,954
Orange County	79,297	78,472	83,021	84,046	86,007
Osceola County	26,317	26,159	26,132	25,330	24,921
Polk County	6,715	6,976	7,165	6,910	6,803
Seminole County	4,642	4,697	5,013	5,305	5,159
Sumter County	770	770	770	770	770
Volusia County	12,372	12,600	12,165	11,802	11,911
CFMPOA Region	146,721	146,562	151,362	150,756	151,695

Source: FL Department of Business and Professional Regulation, *Count of Active Licenses and Seats/Units by Type and FL County*

Licensed Drivers

The number of licensed drivers in the area is another indicator of traffic congestion levels. This table shows how many licensed drivers were in the CFMPOA region from 2008 through 2012:

Licensed Drivers	2008	2009	2010	2011	2012
Brevard County	468,248	467,118	466,217	461,921	456,251
Lake County	245,189	247,957	249,179	249,085	247,764
Marion County	279,952	280,623	280,467	278,406	274,512
Orange County	874,217	875,462	876,077	880,791	883,215
Osceola County	218,137	221,244	223,721	225,934	228,454
Polk County	454,034	454,664	453,207	450,165	444,340
Seminole County	346,112	346,343	344,358	343,230	341,598
Sumter County	67,004	70,191	72,796	75,215	77,776
Volusia County	423,120	419,292	416,272	410,653	403,957
CFMPOA Region	3,376,013	3,382,894	3,382,294	3,375,400	3,357,867

Source: Florida Department of Highway Safety and Motor Vehicle, *Vehicle and Vessel Reports and Statistics*

Registered Vehicles

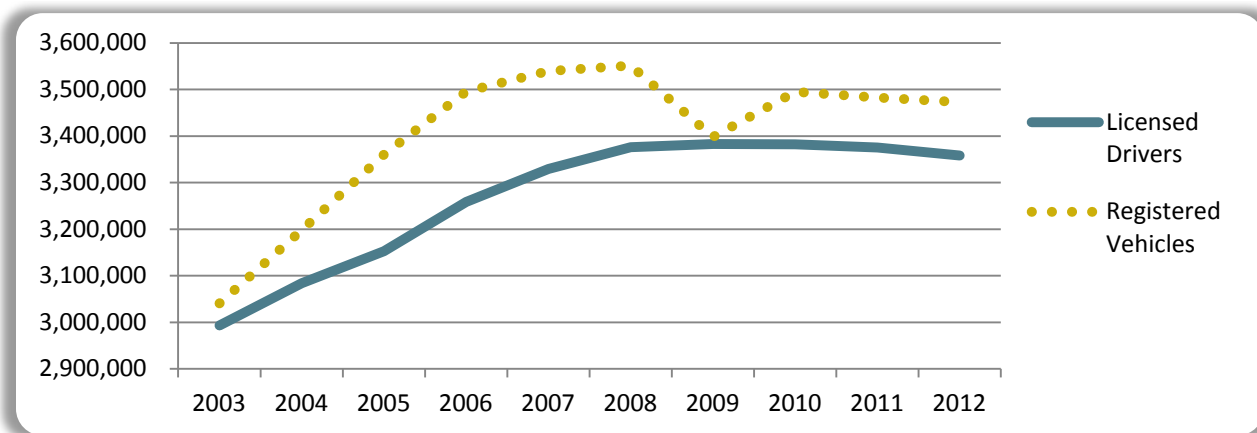
Another indicator that can be used to measure traffic congestion is the change in the number of vehicles on the road. The following table illustrates the number of registered motor vehicles in the CFMPOA region from FY 2007/08 through FY 2011/12:

Registered Vehicles	2007/08	2008/09	2009/10	2010/11	2011/12
Brevard County	489,793	479,526	473,167	470,263	463,399
Lake County	267,200	254,250	253,763	252,449	248,331
Marion County	290,428	283,223	274,692	272,769	267,009
Orange County	910,264	833,343	935,280	934,894	951,239
Osceola County	210,432	203,230	197,960	201,017	208,232
Polk County	475,307	466,652	452,586	449,073	440,202
Seminole County	382,442	372,063	417,023	414,074	412,258
Sumter County	63,108	63,913	68,326	70,459	70,903
Volusia County	462,134	441,457	422,345	417,244	411,147
CFMPOA Region	3,551,108	3,397,657	3,495,142	3,482,242	3,472,720

Source: Florida Department of Highway Safety and Motor Vehicle, *Vehicle and Vessel Reports and Statistics*

Historic Comparison: Licensed Drivers and Registered Vehicles for the CFMPOA Region

This graph illustrates the 10-year comparison of licensed drivers and registered vehicles for Brevard, Lake, Marion, Orange, Osceola, Polk, Seminole, Sumter, and Volusia Counties - the CFMPOA region.



Source: Florida Department of Highway Safety and Motor Vehicle, *Vehicle and Vessel Reports and Statistics*

Highway Statistics

Due to the region's steady population growth and development patterns in the past few decades, the private (and in many cases the single-occupant) automobile is the predominant mode of transportation. Several factors -- including time-of-day, travel demand, and multi-year construction delays -- have led to increased congestion throughout the CFMPOA region.

Local Road Mileage (Paved Centerline Miles)



Centerline miles represent the total length of a given road from its starting point to its end point. The number and size of the lanes on that road are disregarded when calculating its centerline mileage.

This table shows the change in the number of miles of paved local roads in the CFMPOA region over the 2006-2010 timeframe, since the latest information available is for 2010. The numbers in the table reflect the centerline miles of paved roads, information that is collected annually from local governments by FDOT.

<i>Local Road Mileage</i>	<i>2007</i>	<i>2008</i>	<i>2009</i>	<i>2010</i>	<i>2011</i>
Brevard County	2,787.2	2,790.0	2,794.0	2,798.4	2,799.6
Lake County	1,871.3	1,926.6	1,942.7	1,958.7	1,971.7
Marion County	2,812.2	2,910.7	2,909.3	2,942.3	2,999.0
Orange County	4,073.9	4,100.4	4,118.9	4,137.5	3,965.8
Osceola County	1,133.0	1,157.1	1,164.7	1,172.6	1,173.0
Polk County	3,486.0	3,517.1	3,549.0	3,564.7	3,571.6
Seminole County	1,473.0	1,473.0	1,477.6	1,481.8	1,479.7
Sumter County	672.4	684.5	725.4	743.7	811.1
Volusia County	2,845.3	2,861.7	2,862.0	2,836.2	2,854.7
CFMPOA Region	21,154.3	21,421.1	21,543.6	21,635.9	21,626.2

Source: Florida Department of Transportation, Florida Highway Mileage Reports - City and County Roads

State Road Mileage (Lane Miles)

Another indicator of the change in the amount of travel for the MPOs and TPOs in the CFMPOA region is the corresponding change in roadway lane mileage. Lane miles are calculated by multiplying the centerline mileage of a road by the number of lanes it has. Lane mileage provides a total amount of mileage covered by lanes belonging to a specific road. The lane miles of state roads in Brevard, Lake, Marion, Orange, Osceola, Polk, Seminole, Sumter, and Volusia Counties -- from 2007 through 2011-- are shown in the tables below. These have been divided into interstate facilities (such as I-4, I-75, and I-95); toll roads (such as SR 417, SR 528, and Florida's Turnpike); and other state roads (such as SR 50, SR 46, and SR 436).

<i>MetroPlan Orlando</i>	<i>2008</i>	<i>2009</i>	<i>2010</i>	<i>2011</i>	<i>2012</i>
Interstate	316.3	316.3	316.3	311.8	311.6
Toll Roads	976.8	1,014.9	1,022.7	1,071.5	1,090.9
Other State Roads	1,709.9	1,738.0	1,746.4	1,761.2	1,764.6
Total	3,003.0	3,069.2	3,085.4	3,144.5	3,167.1

<i>Lake-Sumter MPO</i>	<i>2008</i>	<i>2009</i>	<i>2010</i>	<i>2011</i>	<i>2012</i>
Interstate	130.4	130.4	130.4	130.4	130.4
Toll Roads	138.2	138.2	138.2	138.2	138.6
Other State Roads	866.0	875.4	875.4	879.8	903.0
Total	1,134.6	1,144.0	1,144.0	1,148.4	1,172.0

Space Coast TPO	2008	2009	2010	2011	2012
Interstate	290.8	311.7	311.7	319.8	355.6
Toll Roads	36.6	36.6	35.9	35.9	53.0
Other State Roads	914.5	914.6	920.3	919.9	903.0
Total	1,241.9	1,262.9	1,267.9	1,275.6	1,311.6

Volusia TPO	2008	2009	2010	2011	2012
Interstate	350.8	359.4	359.4	359.4	359.0
Toll Roads	-	-	-	-	-
Other State Roads	959.4	961.8	965.6	965.7	966.0
Total	1,310.2	1,321.2	1,325.0	1,325.1	1,325.0

Note: Volusia TPO lane mileage does not include roadway portions in Flagler Beach or Beverly Beach

Polk TPO	2008	2009	2010	2011	2012
Interstate	195.4	195.4	195.4	195.4	195.4
Toll Roads	87.0	89.2	89.2	89.2	93.9
Other State Roads	1,325.7	1,334.2	1,336.7	1,336.7	1,347.7
Total	1,608.1	1,618.8	1,621.3	1,621.3	1,637.0

Ocala / Marion Co. TPO	2008	2009	2010	2011	2012
Interstate	229.7	229.7	229.7	229.7	229.7
Toll Roads	-	-	-	-	-
Other State Roads	685.3	684.9	684.1	686.8	697.4
Total	915.0	914.6	913.8	916.5	927.1

CFMPOA Region Total	2008	2009	2010	2011	2012
Interstate	1,513.4	1,542.9	1,542.9	1,551.0	1,581.7
Toll Roads	1,233.6	1,278.9	1,286.0	1,313.4	1,376.1
Other State Roads	6,460.8	6,508.9	6,528.5	6,541.8	6,581.7
Total	9,207.8	9,330.7	9,357.4	9,406.2	9,539.5

Source: Florida Department of Transportation, Mileage and Travel (DVMT) Reports - State Highway System

Vehicle Miles Traveled

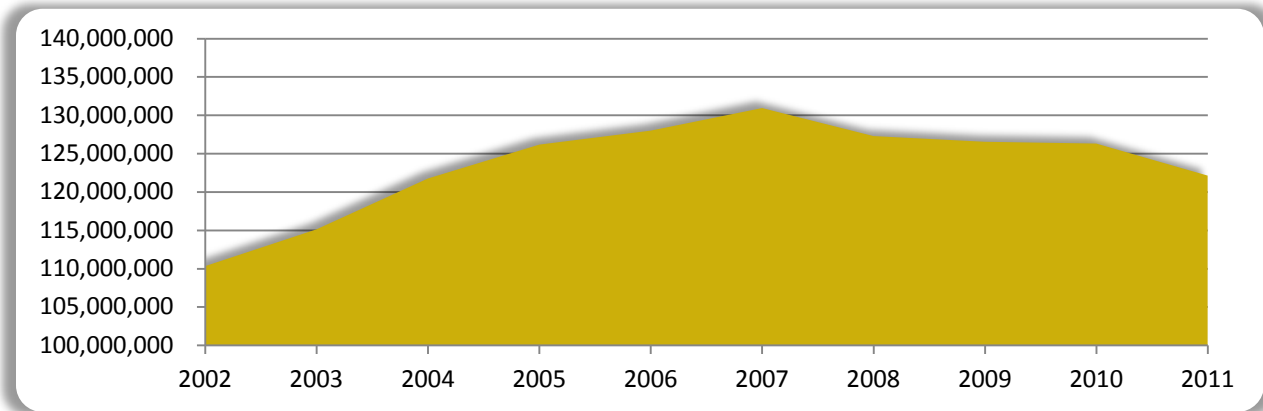
The number of vehicle miles traveled (VMT) on the highway network is an indicator that measures the growth in both the number of vehicles and the distances driven in the CFMPOA region. FDOT annually estimates the VMT for all counties in the state by multiplying the lengths of the state and local roads in the counties by the average daily trips on those roads. This table and graph illustrate the average daily VMTs in the CFMPOA region from 2007 through 2011:

Vehicle Miles Traveled	2007	2008	2009	2010	2011
Brevard County	18,144,771	17,893,256	17,355,029	17,125,596	16,477,274
Lake County	8,620,150	8,124,673	8,024,494	8,054,672	7,906,575
Marion County	11,907,543	11,397,654	11,279,407	11,067,331	10,926,028
Orange County	36,029,040	35,436,426	35,586,328	35,657,527	33,325,315
Osceola County	9,139,112	8,836,800	8,730,733	8,639,272	8,650,963
Polk County	17,268,198	16,692,962	16,410,596	16,442,305	16,409,039
Seminole County	10,325,317	9,866,475	10,262,469	10,249,225	9,922,699
Sumter County	3,512,671	3,427,152	3,367,650	3,629,402	3,714,603
Volusia County	15,967,879	15,586,786	15,501,243	15,419,863	14,776,444
CFMPOA Region	130,914,681	127,262,184	126,517,949	126,285,193	122,108,940

Source: Florida Department of Transportation, Centerline Miles and Daily Vehicle Miles Traveled Report

10-Year Historic Trend - Vehicle Miles Traveled

This graph illustrates the 10-year VMT trend total for Brevard, Lake, Marion, Orange, Osceola, Polk, Seminole, Sumter, and Volusia Counties - the CFMPOA region.



Gasoline Consumption

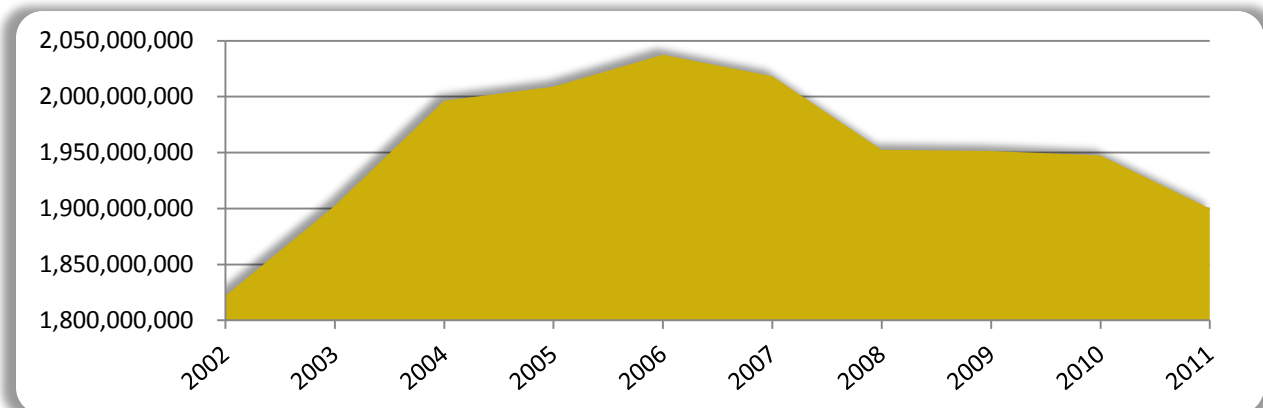
Consumption of gasoline over a period of years also indicates changes in the number of vehicles and amount of travel in the CFMPOA area. This chart illustrates the number of gallons of gasoline sold in the region from 2007 through 2011.

Gasoline Consumption	2007	2008	2009	2010	2011
Brevard County	256,280	239,522	245,859	242,942	237,925
Lake County	128,015	126,634	129,344	134,595	130,471
Marion County	185,317	178,584	178,849	173,089	161,291
Orange County	584,868	576,320	563,027	563,873	552,913
Osceola County	163,480	155,874	158,769	158,721	155,595
Polk County	242,093	233,147	231,656	231,183	224,299
Seminole County	198,396	196,184	190,695	192,945	185,810
Sumter County	43,674	43,304	44,568	44,229	45,586
Volusia County	216,123	202,881	208,551	205,838	206,048
CFMPOA Region	2,018,246	1,952,450	1,951,318	1,947,415	1,899,938

Source: Florida Department of Agriculture and Consumer Services, *Florida Motor Gasoline & Diesel Fuel Reports*

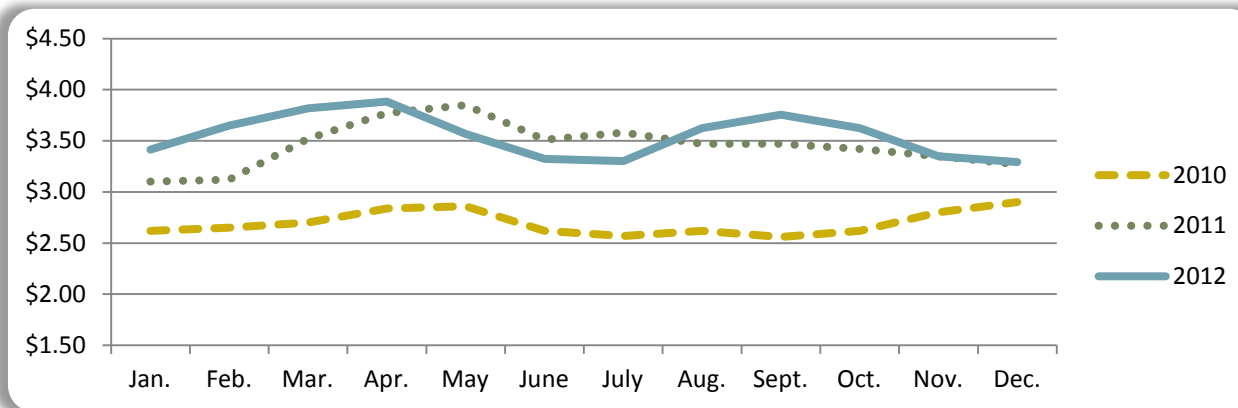
10-Year Historic Trend - Gasoline Consumption

This graph illustrates the 10-year gasoline consumption trend total for Brevard, Lake, Marion, Orange, Osceola, Polk, Seminole, Sumter, and Volusia counties - the CFMPOA region.



Average Monthly Gasoline Price per Gallon

One factor that influences the amount of gasoline consumed is the price per gallon. The average monthly price per gallon for regular gasoline in the CFMPOA region from 2009 through 2011 is shown in the following chart.



Source: U.S. Energy Information Administration, *Florida Regular Retail Prices Report*

Diesel Fuel Consumption

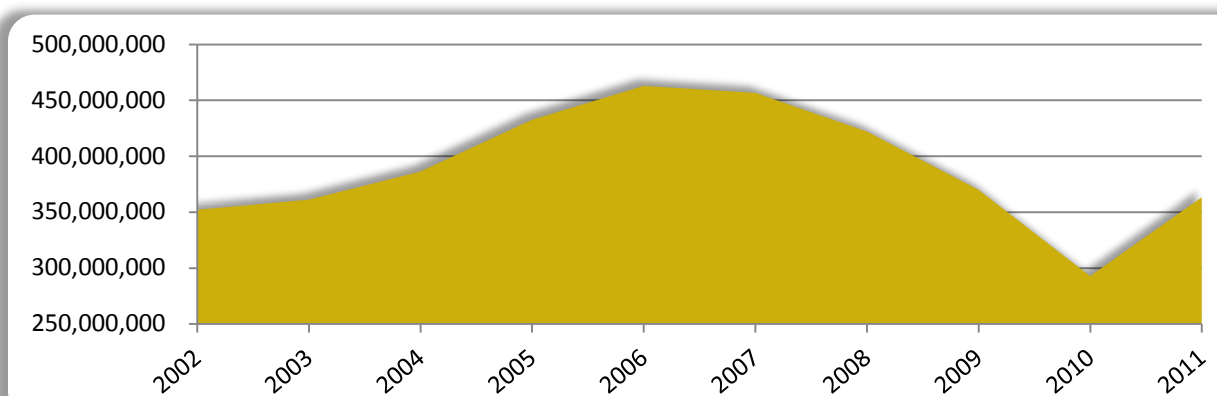
Consumption of diesel fuel over a period of years also indicates change in the number of vehicles, particularly commercial trucks, in the CFMPOA area. This chart shows the number of gallons of diesel fuel sold in the region from FY 2006/07 through FY 2010/11.

<i>Diesel Consumption</i>	<i>2007</i>	<i>2008</i>	<i>2009</i>	<i>2010</i>	<i>2011</i>
Brevard County	40,972	37,894	33,874	26,457	37,019
Lake County	22,367	20,520	16,665	12,164	15,968
Marion County	54,004	50,728	45,173	36,289	43,332
Orange County	121,678	113,229	100,812	84,910	105,333
Osceola County	25,985	22,819	18,425	11,061	13,768
Polk County	96,040	89,288	77,968	61,888	76,310
Seminole County	26,427	23,704	19,688	13,798	15,093
Sumter County	34,823	32,978	30,478	26,443	30,953
Volusia County	34,198	30,734	26,773	19,682	25,320
CFMPOA Region	456,494	421,894	369,856	292,692	363,096

Source: Florida Department of Agriculture and Consumer Services, *Florida Motor Gasoline & Diesel Fuel Reports*

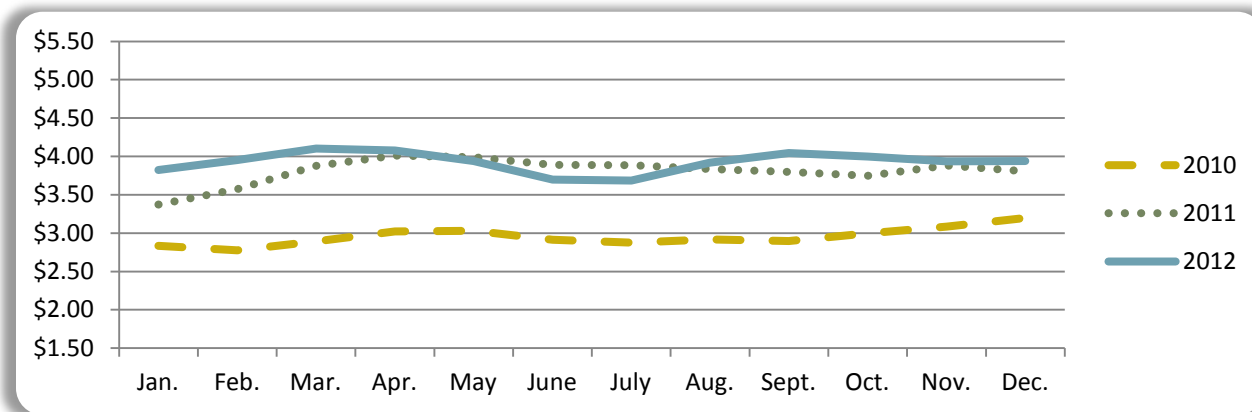
10-Year Historic Trend - Diesel Consumption

This graph illustrates the 10-year diesel consumption trend total for Brevard, Lake, Marion, Orange, Osceola, Polk, Seminole, Sumter, and Volusia counties - the CFMPOA region.



Average Monthly Diesel Price per Gallon

One factor that influences the amount of diesel fuel consumed is the price per gallon. The average monthly price per gallon for diesel in the CFMPOA region from 2009 through 2012 is shown in the following chart.



Source: U.S. Energy Information Administration, *Lower Atlantic Diesel Retail Prices Report*

Traffic Counts - Major Roadways

One of the main methods for measuring activity on an area's highway system is the collection of traffic counts on major roadways. More than 400 traffic counts for various locations in Brevard, Lake, Marion, Orange, Osceola, Polk, Seminole, Sumter, and Volusia counties are obtained each year by the Florida Department of Transportation.

The tables shown on pages 8-12 contain FDOT daily (24-hour) traffic counts averaged annually on major roadways in the region from 2006 through 2010:

<i>Interstate 95</i>	<i>2007</i>	<i>2008</i>	<i>2009</i>	<i>2010</i>	<i>2011</i>
S of SR 514	37,800	33,400	35,600	35,500	34,330
S of CR 516	59,500	77,500	49,500	48,500	34,000
N of CR 516	83,000	80,000	78,000	78,000	55,000
N of SR 500	74,000	81,500	79,500	78,000	55,000
N of SR 518	86,000	83,000	69,500	68,500	37,500
S of Fiske Blvd.	80,000	77,000	70,000	69,000	55,000
S of SR 520	74,500	71,500	74,000	40,500	45,500
S of SR 407	45,000	41,000	38,500	39,000	53,500
N of Dairy Rd.	34,500	33,000	34,500	31,000	31,500
N of CR 5A	27,000	24,500	26,000	24,500	30,500
S of SR 44	33,500	34,000	32,000	32,000	31,000
N of SR 44	40,100	36,400	37,400	38,000	36,599
S of I-4	56,000	57,500	52,500	51,000	44,500
S of LPGA Blvd.	74,000	68,000	70,000	70,500	74,500
N of LPGA Blvd.	73,000	79,000	79,500	68,000	76,000
S of SR 5	60,000	55,000	68,500	69,000	62,500
N of SR 5	58,500	53,000	66,000	67,000	60,500
Total Average	996,400	985,300	961,000	908,000	817,429

<i>Interstate 4</i>	<i>2007</i>	<i>2008</i>	<i>2009</i>	<i>2010</i>	<i>2011</i>
E of Hillsborough Co. Line	115,000	102,500	104,000	108,500	104,500
SW of W. Memorial Blvd.	89,000	90,000	84,500	87,000	85,500
NE of SR 539/Kathleen Rd.	79,500	76,500	76,500	79,000	81,000
NE of US 98	76,500	75,500	72,500	74,000	77,000
NE of Old Combee Rd.	75,000	62,500	64,500	65,500	70,000
E of SR 33	68,500	67,500	64,500	64,500	68,000
E of SR 559	74,000	65,000	65,500	71,500	72,500
SW of US 27	75,500	72,000	68,500	75,000	75,500
NE of US 27	100,000	100,500	95,500	99,000	95,500
SW of SR 417	79,000	78,000	78,500	85,500	61,000
at Florida's Turnpike	160,000	146,500	152,500	157,000	152,000
N of Kaley Ave.	177,500	175,000	142,500	136,500	131,500
S of SR 50	207,000	200,000	160,000	158,000	150,000
N of Princeton St.	209,000	182,500	159,500	164,000	168,000
N of Lee Rd.	208,000	205,000	160,000	170,500	124,000
S of Seminole Co. Line	162,000	149,000	158,000	149,500	158,500
N of SR 436	142,000	139,500	142,000	146,500	135,500
N of SR 434	137,300	131,600	132,500	134,000	132,557
S of CR 46A	132,000	126,500	125,000	126,500	125,000
N of SR 46	113,000	111,000	108,000	115,000	109,500
E of Enterprise Rd.	95,400	92,600	94,700	95,500	93,629
SW of SR 472	89,000	86,000	53,500	86,500	79,500
NE of SR 472	61,500	58,000	75,000	76,000	70,500
SW of SR 44	61,000	58,000	61,500	65,000	62,000
NE of SR 44	54,500	56,000	54,500	56,000	54,000
W of I-95	42,500	47,500	45,500	43,000	43,000
Total Average	2,883,700	2,754,700	2,599,200	2,689,000	2,579,686

<i>SR 528</i>	<i>2007</i>	<i>2008</i>	<i>2009</i>	<i>2010</i>	<i>2011</i>
E of I-4	76,100	78,300	74,500	75,300	77,800
W of John Young Pkwy.	78,600	81,100	77,000	77,400	80,200
E of US 441	70,000	69,600	63,900	64,400	68,500
E of McCoy Rd.	87,600	87,100	81,100	81,200	85,800
W of SR 436	83,000	91,000	76,000	84,500	69,500
W of Goldenrod Rd.	70,000	66,000	59,600	63,000	34,500
E of Narcoossee Rd.	61,000	60,000	53,500	44,000	55,910
E of SR 417	43,000	42,000	40,500	40,000	34,000
W of SR 520	41,500	37,500	39,300	39,200	38,759
E of St. Johns River	30,000	30,500	26,500	27,500	26,500
E of I-95	25,500	24,500	20,900	22,700	20,200
W of US 1	37,500	36,000	34,000	37,500	39,500
Total Average	703,800	703,600	646,800	656,700	631,169

<i>US 192</i>	<i>2007</i>	<i>2008</i>	<i>2009</i>	<i>2010</i>	<i>2011</i>
E of US 27	44,000	50,000	35,000	37,000	39,000
E of CR 545	49,000	45,500	42,500	43,000	41,000
E of SR 429	56,500	51,500	43,000	48,000	58,000
W of I-4	70,000	64,500	57,500	54,000	73,000
E of SR 535	54,000	58,000	50,500	54,000	50,000
W of Hoagland Blvd.	58,600	57,500	57,700	58,500	58,590
W of John Young Pkwy.	43,000	41,500	45,000	45,000	42,500
E of US 441	47,000	45,500	48,000	45,500	44,000
SE of Boggy Creek Rd.	44,000	39,000	42,500	38,500	40,500
NW of Neptune Rd.	47,500	42,000	44,000	42,500	40,500
E of Vermont Ave.	41,500	36,500	39,000	38,500	32,500
W of CR 534	32,000	28,000	28,500	28,000	21,500
E of CR 532	18,100	19,700	17,600	22,000	15,200
W of I-95	5,800	5,600	6,200	6,100	6,300
E of I-95	29,500	33,500	28,500	27,500	27,500
W of Babcock St.	36,500	40,500	37,000	33,000	34,500
W of US 1	17,200	18,200	16,700	17,100	16,900
Total Average	694,200	677,000	639,200	638,200	641,490

<i>SR 46</i>	<i>2007</i>	<i>2008</i>	<i>2009</i>	<i>2010</i>	<i>2011</i>
W of Round Lake Rd.	10,700	10,500	10,500	10,900	10,000
E of CR 437 South	15,300	13,800	13,600	13,600	12,900
E of CR 437 North	16,400	14,900	15,000	14,300	14,100
E of Lake Co. Line	23,000	21,000	19,700	19,600	18,700
W of I-4	28,000	31,000	30,500	30,500	14,800
E of I-4	36,500	37,500	43,000	32,000	21,500
W of Airport Blvd.	31,500	29,000	27,000	28,500	20,000
W of US 17/92	17,900	19,200	17,000	16,600	17,100
E of US 17/92	18,400	19,500	15,200	16,100	21,900
E of Mellonville Ave.	16,800	15,400	15,000	14,200	14,000
W of St. Johns River	11,200	10,400	9,800	10,500	10,196
E of CR 426	6,400	6,200	5,900	5,900	6,100
2.5 mi. W of I-95	5,600	5,500	8,500	5,200	5,600
E of I-95	9,100	9,400	8,300	7,700	7800
Total Average	246,800	243,300	239,000	225,600	194,696

<i>SR 50</i>	<i>2007</i>	<i>2008</i>	<i>2009</i>	<i>2010</i>	<i>2011</i>
at CR 478A	6,400	7,700	5,700	53,000	5,300
W of SR 471	7,100	9,200	6,200	6,400	5,800
W of Lake Co. Line	9,100	9,200	7,700	7,300	7,500
W of CR 565	16,500	13,100	12,000	11,200	10,600
E of CR 565	23,000	23,500	17,800	18,600	16,100
E of SR 19	27,500	24,000	22,500	21,500	8,100
W of CR 565A	24,000	22,000	23,000	23,000	22,500
W of CR 561	25,000	23,000	22,500	23,000	22,000
E of CR 561	28,500	26,500	25,500	25,500	24,000
W of US 27	35,500	34,500	31,000	30,000	30,000
W of Hancock Rd.	43,000	39,000	36,000	35,000	37,000
E of Lake Co. Line	52,500	47,500	47,000	46,000	44,000
E of CR 545	35,200	33,300	32,800	31,500	29,500
E of Old Winter Garden Rd.	44,000	39,500	38,500	34,000	32,000
E of Powers Dr.	39,500	39,500	37,000	36,000	29,500
E of John Young Pkwy.	40,500	34,500	35,000	32,000	31,000
E of Edgewater Dr.	38,500	39,000	32,500	36,500	32,500
W of US 17/92	43,500	43,000	42,000	38,000	42,500
E of Bennett Rd.	54,500	53,500	52,500	21,500	49,500
E of SR 436	41,000	40,000	39,000	24,500	44,500
E of Goldenrod Rd.	46,000	45,000	44,000	37,000	40,500
E of Dean Rd.	49,000	45,500	42,500	41,000	38,000
E of Alafaya Tr.	47,500	46,500	44,000	45,000	46,000
W of SR 520	27,200	25,500	26,200	25,600	25,231
1 mi. W of I-95	11,800	11,500	11,500	10,900	9,900
1.2 mi. E of I-95	24,000	21,500	21,000	22,900	21,000
W of US 1	16,500	15,700	16,100	12,800	12,300
Total Average	856,800	812,700	771,500	749,700	716,831

<i>Interstate 75</i>	<i>2007</i>	<i>2008</i>	<i>2009</i>	<i>2010</i>	<i>2011</i>
S of CR 476B	40,500	40,000	35,500	37,500	38,500
S of SR 48	37,500	38,000	36,500	34,500	37,000
S of Florida's Turnpike	43,600	40,400	41,300	41,000	41,424
S of SR 44	73,000	71,500	58,500	61,500	59,000
N of SR 44	69,500	68,000	61,500	65,000	67,500
N of Williams Rd.	82,700	74,600	76,100	77,500	75,099
S of SR 40	84,500	69,000	67,000	71,000	65,500
S of US 27	77,500	64,000	62,000	69,000	67,500
N of US 27	69,000	58,500	56,500	55,500	65,000
N of SR 326	56,500	50,000	52,500	51,500	51,500
N of CR 318	62,000	51,000	52,000	46,500	48,500
Total Average	696,300	625,000	599,400	610,500	616,523

<i>US 441</i>	<i>2007</i>	<i>2008</i>	<i>2009</i>	<i>2010</i>	<i>2011</i>
S of CR 320	8,300	8,100	8,100	9,400	7,700
N of SR 326	25,500	24,000	23,500	23,500	24,376
S of CR 25A	27,500	24,000	25,000	24,500	18,200
N of SR 492	31,500	30,000	27,000	26,000	27,000
S of SR 40	38,500	36,500	35,500	34,500	34,000
S of CR 464A	33,500	31,500	30,500	29,500	29,500
S of SE 38th Ter.	30,000	28,500	25,500	27,500	26,000
NW of CR 484	33,000	32,000	30,000	28,500	30,000
N of SE 119th Pl.	25,000	22,500	22,500	20,500	11,800
N of CR 42	26,000	25,000	25,000	27,000	12,200
S of CR 466A	34,000	32,500	30,500	31,500	12,400
N of CR 44A	47,500	46,500	46,000	42,500	17,500
NW of SR 44	32,000	29,500	30,500	29,000	2,800
E of CR 44	NA	32,000	34,300	33,800	33,012
E of CR 473	41,500	40,000	42,500	40,500	39,000
W of SR 19	42,000	40,000	42,000	30,000	27,500
W of CR 452	40,500	38,500	43,500	43,500	44,500
E of SR 19	44,500	34,500	37,000	40,000	37,000
SE of CR 44	34,500	26,000	25,500	27,500	27,500
N of SR 46	29,500	26,500	27,000	28,500	29,500
S of Lake Co. Line	25,500	25,500	27,000	25,000	25,500
NW of Plymouth-Sorrento Rd.	34,500	34,500	32,500	33,500	32,500
NW of SR 429	40,000	39,000	43,000	44,500	37,500
W of SR 436	51,500	50,500	49,500	46,000	27,000
N of Clarcona-Ocoee Rd.	31,000	32,500	27,500	29,500	27,000
N of SR 50	28,500	26,500	27,500	25,000	28,000
S of SR 50	26,000	21,500	27,000	21,500	20,600
S of Old Winter Garden Rd.	35,500	33,000	29,500	29,000	26,500
N of Holden Ave.	65,500	60,500	58,000	57,000	57,000
N of Sand Lake Rd.	58,500	53,000	53,000	50,000	53,500
N of Beachline Expy.	71,500	75,000	70,000	71,000	61,000
S of Taft-Vineland Rd.	45,500	45,000	43,000	47,000	47,000
N of Osceola Co. Line	28,000	31,000	32,000	33,000	34,500
Total Average	1,166,300	1,135,600	1,130,900	1,109,700	969,088

<i>US 17 / 92</i>	<i>2007</i>	<i>2008</i>	<i>2009</i>	<i>2010</i>	<i>2010</i>
E of CR 555	24,000	23,000	22,000	21,900	21,500
E of Experiment Station Rd.	18,400	15,600	15,600	15,200	15,200
W of Kentucky Ave.	21,000	19,900	19,500	20,000	19,800
W of 9th St. (Haines City)	18,100	17,700	18,000	16,900	16,700
N of CR 580/Johnson Ave.	12,600	11,900	11,300	11,100	11,100
SW of CR 547	11,300	10,600	10,200	9,700	9,700
NE of CR 54	8,600	7,900	7,500	7,500	7,500
W of Pleasant Hill Rd.	26,500	25,500	26,000	26,000	24,000
S of Emmett St.	58,500	52,500	54,000	56,000	53,000
N of SR 50	28,000	27,500	25,000	27,500	27,500
S of Orange Ave.	27,500	26,000	24,500	26,000	25,000
S of Lee Rd.	35,000	35,500	32,000	31,500	32,500
N of Lake Ave.	56,000	50,500	44,000	51,000	48,500
S of Maitland Blvd.	33,000	30,000	29,500	28,500	30,500
N of Orange Co. Line	54,000	52,000	49,000	50,000	47,000
N of SR 436	52,000	51,500	50,500	52,000	48,000
N of SR 434	41,000	39,500	36,500	37,000	38,000
S of CR 427	35,500	32,000	32,500	29,500	23,500
S of Lake Mary Blvd.	40,500	37,000	35,500	35,000	34,000
S of CR 46A	26,000	24,000	21,000	21,500	23,000
N of SR 46	25,500	25,000	22,500	26,000	23,500
S of Dirksen Rd.	24,000	24,000	23,000	25,000	23,500
S of Saxon Blvd.	28,500	27,500	27,500	27,500	27,500
S of Graves Ave.	32,500	30,500	29,500	30,000	29,000
S of New York Ave.	30,000	28,000	27,500	28,000	27,000
N of Golf Club Dr.	49,500	47,500	43,500	44,000	44,000
N of SR 15A/Taylor Rd.	33,000	27,500	26,500	26,500	27,500
N of Beresford Ave.	17,900	16,800	16,400	17,300	18,000
S of SR 44/New York Ave.	16,400	15,200	14,700	15,300	16,600
S of Minnesota Ave.	18,000	18,300	16,300	16,700	16,400
N of Plymouth Ave.	25,000	26,500	23,000	22,000	21,500
Total Average	927,800	876,900	834,500	852,100	830,500

<i>Florida's Turnpike</i>	<i>2007</i>	<i>2008</i>	<i>2009</i>	<i>2010</i>	<i>2011</i>
SE of I-75	35,500	34,800	33,200	33,700	35,000
at CR 468	38,900	35,900	35,900	37,200	36,072
NW of Lake Co. Line	38,100	37,300	35,700	36,400	36,000
N of Palatka River	39,100	37,900	36,200	37,000	37,000
at Leesburg Service Plaza	33,300	32,700	31,300	31,900	32,000
S of CR 561	44,400	41,300	40,900	41,800	40,705
S of SR 50	73,900	72,200	66,900	65,700	67,000
W of SR 429	66,900	64,500	59,800	57,600	58,400
N of SR 408	104,600	104,200	99,100	96,600	96,000
at Turkey Lake Service Pl.	70,400	67,700	64,400	63,400	66,000
N of SR 528	74,500	70,500	67,600	69,400	70,900
N of of Osceola Pkwy.	62,300	57,100	54,100	55,000	55,900
S of US 441	50,200	47,900	46,000	46,700	47,800
at Partin Settlement Rd.	31,800	31,400	30,600	31,000	31,500
S of Neptune Rd.	33,000	33,900	32,400	33,100	33,177
S of 3 Lakes Toll Plaza	27,500	26,000	25,000	25,300	25,000
Total Average	824,400	795,300	759,100	761,800	768,454

Source: Florida Department of Transportation, AADR Report

Health and Safety Statistics

A large and growing body of research links the built environment to the safety and health. Land-use planning, including transportation decisions, affects human health by influencing a wide range of environmental, physical, and social factors. Although the positive effects of mobility on health are substantial, the negative effects are also profound and costly. This chapter analyzes the safety statistics for motorists, pedestrians, and cyclists along with the CO² emissions produced by our transportation network.

Automobile Safety Statistics



In 2009, MetroPlan Orlando developed an online Geographic Information System (GIS) based crash database to provide its regional partners with an accessible crash analysis and reporting tool. This tool provides current crash and streets data, and it is being used by several law enforcement, traffic engineering, transportation planning agencies, and research institutions across the state.

Automobile crashes continue to trend upward in the Central Florida region, with a 9 percent increase over 2008 numbers. Nonetheless, the area saw great improvements in the injury and fatalities numbers. Injuries decreased by 14.7%, while fatalities decreased by 30.9%. These tables show changes in the total number of auto occupant crashes, injuries and fatalities for each of the nine counties.

<i>Automobile Crash</i>	<i>2008</i>	<i>2009</i>	<i>2010</i>	<i>2011</i>	<i>2012</i>
Brevard County	4,909	4,750	4,873	5,283	6,230
Lake County	2,619	2,491	2,540	2,920	3,460
Marion County	3,559	3,321	3,422	3,734	4,102
Orange County	16,712	16,092	17,090	19,121	19,642
Osceola County	2,810	2,795	3,141	2,955	3,302
Polk County	6,446	5,980	5,579	5,537	6,061
Seminole County	2,717	2,574	2,440	3,192	3,383
Sumter County	729	672	720	836	605
Volusia County	5,709	5,685	5,811	5,225	6,386
CFMPOA Total	46,210	44,360	45,616	48,803	53,171

<i>Automobile Injury</i>	<i>2008</i>	<i>2009</i>	<i>2010</i>	<i>2011</i>	<i>2012</i>
Brevard County	4,539	4,324	4,120	3,449	2,749
Lake County	2,503	2,299	2,432	2,060	1,499
Marion County	3,962	3,784	3,428	3,000	2,025
Orange County	14,395	14,272	14,898	13,824	13,414
Osceola County	2,664	2,634	2,933	2,388	2,898
Polk County	6,011	5,376	5,006	4,350	3,048
Seminole County	2,407	2,532	2,237	2,353	2,398
Sumter County	642	711	784	686	286
Volusia County	4,899	4,810	4,983	4,295	3,254
CFMPOA Total	42,022	40,742	40,821	36,405	31,571

Source: Florida Department of Highway Safety and Motor Vehicles & MetroPlan Orlando Web-Based Crash Database

<i>Automobile Fatality</i>	<i>2008</i>	<i>2009</i>	<i>2010</i>	<i>2011</i>	<i>2012</i>
Brevard County	81	54	65	68	58
Lake County	61	43	40	48	35
Marion County	87	61	73	59	64
Orange County	170	142	130	130	145
Osceola County	55	50	34	46	22
Polk County	133	94	85	77	69
Seminole County	42	23	32	48	24
Sumter County	17	21	23	18	17
Volusia County	109	94	105	86	90
CFMPOA Total	755	582	587	580	524

Source: Florida Department of Highway Safety and Motor Vehicles & MetroPlan Orlando Web-Based Crash Database

Pedestrian Safety Statistics



Pedestrian safety affects the entire community; the young and old, drivers and walkers, at all times of the day or night. Many unnecessary injuries and fatalities occur because of intoxication or inattentiveness by both drivers and pedestrians. Pedestrian injuries and fatalities appear to be in a downward trend, with injuries decreasing by 20.2% and fatalities decreasing by 26.8% from 2008 numbers.

These tables show the changes in the total number of bicyclist and pedestrian injuries and fatalities from 2008 through 2012 as compiled by the Florida Department of Highway Safety and Motor Vehicles and MetroPlan's Web-Based Crash database for the CFMPOA region.

<i>Pedestrian Injury</i>	<i>2008</i>	<i>2009</i>	<i>2010</i>	<i>2011</i>	<i>2012</i>
Brevard County	163	205	167	110	167
Lake County	69	73	69	58	60
Marion County	95	94	98	84	91
Orange County	569	523	509	448	460
Osceola County	86	112	115	79	68
Polk County	167	193	178	123	148
Seminole County	112	99	76	98	83
Sumter County	11	21	15	16	9
Volusia County	230	211	194	184	185
CFMPOA Total	1,502	1,531	1,421	1,200	1,271

<i>Pedestrian Fatality</i>	<i>2008</i>	<i>2009</i>	<i>2010</i>	<i>2011</i>	<i>2012</i>
Brevard County	18	11	13	11	11
Lake County	10	3	9	9	5
Marion County	10	8	12	9	11
Orange County	28	32	43	30	37
Osceola County	10	5	3	14	2
Polk County	26	17	13	8	14
Seminole County	8	5	11	14	3
Sumter County	2	-	3	1	-
Volusia County	15	20	26	18	15
CFMPOA Total	127	101	133	114	98

Source: Florida Department of Highway Safety and Motor Vehicles & MetroPlan Orlando Web-Based Crash Database

Bicyclist Safety Statistics



As the number of bicyclists using the transportation network continues to increase, so could the number of injuries and fatalities. Injuries increased by 14.9% in the area, with Orange County seeing the largest increase with 19%. Fatalities have fluctuated in the five-year span, going from 25 deaths to 18, with the largest decrease occurring in 2009. These charts show the changes in the total number of bicyclist injuries and fatalities from 2008 through 2012 for the CFMPOA region.

<i>Bicyclist Injury</i>	<i>2008</i>	<i>2009</i>	<i>2010</i>	<i>2011</i>	<i>2012</i>
Brevard County	130	112	112	112	147
Lake County	30	18	30	26	48
Marion County	51	42	36	42	68
Orange County	280	284	295	347	413
Osceola County	41	27	54	43	51
Polk County	85	91	108	62	115
Seminole County	62	78	64	96	89
Sumter County	9	4	5	4	4
Volusia County	138	147	174	128	179
CFMPOA Total	826	803	878	860	1,114

<i>Bicyclist Fatality</i>	<i>2008</i>	<i>2009</i>	<i>2010</i>	<i>2011</i>	<i>2012</i>
Brevard County	1	1	-	4	3
Lake County	-	1	2	-	2
Marion County	6	1	1	-	1
Orange County	9	6	4	7	8
Osceola County	1	-	2	1	-
Polk County	3	3	2	3	3
Seminole County	2	-	1	4	-
Sumter County	-	-	-	2	1
Volusia County	3	1	4	4	2
CFMPOA Total	25	13	16	25	20

Source: Florida Department of Highway Safety and Motor Vehicles & MetroPlan Orlando Web-Based Crash Database

Air Quality



Air pollution is associated with several health issues, including asthma and other respiratory illnesses, heart disease, and cancer. Ground-level ozone, for which motor vehicle emissions are a primary source, has been a concern in the Central Florida area in recent years. An area will be considered to be in nonattainment (not meeting the standard) if the average of the annual fourth-highest ozone readings at any monitoring site for any three-year period equals or exceeds the 75 parts per billion standard.

The following table shows the fourth-highest eight-hour average attainment status for each year, shown in parts per billion, for the CFMPOA region. The EPA has assigned a specific color to each Air Quality Index (AQI) category to make it easier for people to understand whether air pollution is reaching unhealthy levels in their communities. Green represents satisfactory air quality. Yellow represents “moderate” air quality, meaning air quality is acceptable; however, there may be a moderate health concerns for a very small number of people. Orange signifies unhealthy for sensitive groups. Although general public is not likely to be affected persons with heart and lung disease, older adults and children are at greater risk from the presence of particles in the air.

<i>Ozone Monitoring</i>	<i>2008</i>	<i>2009</i>	<i>2010</i>	<i>2011</i>	<i>2012</i>
Melbourne (Brevard)	67	64	64	66	77
Freedom 7 Elem. (Brevard)	69	61	64	66	68
Lost Lake Elem. (Lake)	69	65	66	69	71
Ocala YMCA (Marion)	71	59	68	67	65
County Impound (Marion)	69	58	65	65	62
Winegard Elem. (Orange)	70	66	71	76	72
Lake Isle Estates (Orange)	70	65	70	78	73
Four Corners (Osceola)	71	63	67	68	66
Sikes Elem. (Polk)	69	65	64	69	85
Baptist Children's (Polk)	74	66	68	70	87
Seminole State (Seminole)	67	62	66	71	69
Port Orange (Volusia)	64	56	61	60	68
Daytona Blind Svc. (Volusia)	64	60	66	64	71

Source: Florida Department of Environmental Protection

Note: The three-year attainment average can be determined by averaging the last three years of ozone data for each station.

Transit Statistics

As the highway system in the CFMPOA region becomes more congested, alternative modes of transportation are becoming increasingly important. Currently, the majority of transit users in the region rely heavily on transit services to get to work, shopping, etc. As a result, this service is essential to the area's economy and the quality of life of many of its citizens.

This chapter looks at fixed-route bus, demand-response (paratransit), and vanpool services provided by the various transit agencies in the CFMPOA region from FY 2007/08 through FY 2011/12.

LYNX



The LYNX service area comprises Orange, Osceola and Seminole counties, an area of approximately 2,500 square miles. LYNX serves small portions of Lake, Polk and Volusia counties as well. While regular fixed route service does not reach the most rural portions of the service area, LYNX paratransit service is available within all portions of the county boundaries. The transit services provided by LYNX include: Fixed-Route Bus Service, LYMMO Downtown Circulator, Shuttle Services, Transportation Disadvantaged Service, and Van Pooling.

Transit Supplied

<i>Vehicle Revenue Miles</i>	<i>2007/08</i>	<i>2008/09</i>	<i>2009/10</i>	<i>2010/11</i>	<i>2011/12</i>
Number of Miles	23,038,559	22,840,981	23,192,565	24,583,550	25,794,194
<i>Vehicle Revenue Hours</i>	<i>2007/08</i>	<i>2008/09</i>	<i>2009/10</i>	<i>2010/11</i>	<i>2011/12</i>
Number of Hours	1,549,475	1,515,885	1,524,265	1,576,812	1,640,660
<i>Vehicles in Max. Service</i>	<i>2007/08</i>	<i>2008/09</i>	<i>2009/10</i>	<i>2010/11</i>	<i>2011/12</i>
Number of Vehicles	467	466	464	484	529

Transit Consumed

<i>Passenger Miles Traveled</i>	<i>2007/08</i>	<i>2008/09</i>	<i>2009/10</i>	<i>2010/11</i>	<i>2011/12</i>
Number of Miles	166,769,628	151,389,724	148,294,757	156,697,957	164,408,315
<i>Unlinked Passenger Trips</i>	<i>2007/08</i>	<i>2008/09</i>	<i>2009/10</i>	<i>2010/11</i>	<i>2011/12</i>
Number of Unlinked Trips	26,427,067	23,747,795	24,780,704	26,996,158	29,250,069

Source: Central Florida Regional Transportation Authority d.b.a. LYNX

LakeXpress



Public transportation services in Lake County include LakeXpress, the County's fixed-route bus service, and Lake County Connection paratransit services. Lake County began LakeXpress services in May 2007 to provide high-quality public transportation services to paratransit patrons and transit-dependent riders. LakeXpress maintains four fixed-route bus services: Lady Lake and Eustis via U.S. 441; Altoona to Zellwood; and two local routes -- one throughout the City of Leesburg and another through the City of Mount Dora. All routes operate on a one-hour headway schedule.

Transit Service Supplied

<i>Vehicle Revenue Miles</i>	<i>2008/09</i>	<i>2009/10</i>	<i>2010/11</i>	<i>2010/11</i>	<i>2011/12</i>
Number of Miles	2,304,138	2,229,240	2,097,697	2,097,697	1,933,003

<i>Vehicle Revenue Hours</i>	<i>2007/08</i>	<i>2008/09</i>	<i>2009/10</i>	<i>2010/11</i>	<i>2011/12</i>
Number of Hours	138,786	131,632	135,525	132,759	144,176

<i>Vehicles in Max. Service</i>	<i>2007/08</i>	<i>2008/09</i>	<i>2009/10</i>	<i>2010/11</i>	<i>2011/12</i>
Number of Vehicles	73	62	63	63	63

Transit Service Consumed

<i>Passenger Miles Traveled</i>	<i>2007/08</i>	<i>2008/09</i>	<i>2009/10</i>	<i>2010/11</i>	<i>2011/12</i>
Number of Miles	5,428,903	5,737,036	5,027,060	4,819,774	4,848,221

<i>Unlinked Passenger Trips</i>	<i>2007/08</i>	<i>2008/09</i>	<i>2009/10</i>	<i>2010/11</i>	<i>2011/12</i>
Number of Unlinked Trips	327,034	375,320	450,376	449,430	463,941

Source: National Transit Database (NTD), LakeXpress (Lake County). Image provided by www.ridelakexpress.com

Space Coast Area Transit (SCAT)



Space Coast Area Transit (SCAT) provides the majority of transit service in Brevard County, including both fixed-route and demand response services. SCAT currently operates 17 fixed routes, 1 dial-a-ride, paratransit service, vanpools, and the Volunteers-in-Motion program. A majority of the routes operate Monday through Saturday. Service spans from approximately 6 a.m. to 8:30 p.m., with an average of 60-minute frequencies.

Transit Service Supplied

<i>Vehicle Revenue Miles</i>	<i>2007/08</i>	<i>2008/09</i>	<i>2009/10</i>	<i>2010/11</i>	<i>2011/12</i>
Number of Miles	3,891,240	4,067,144	4,229,611	4,124,518	2,125,498

<i>Vehicle Revenue Hours</i>	<i>2007/08</i>	<i>2008/09</i>	<i>2009/10</i>	<i>2010/11</i>	<i>2011/12</i>
Number of Hours	194,659	198,433	194,727	192,183	127,914

<i>Vehicles in Max. Service</i>	<i>2007/08</i>	<i>2008/09</i>	<i>2009/10</i>	<i>2010/11</i>	<i>2011/12</i>
Number of Vehicles	154	156	167	166	50

Transit Service Consumed

<i>Passenger Miles Traveled</i>	<i>2007/08</i>	<i>2008/09</i>	<i>2009/10</i>	<i>2010/11</i>	<i>2011/12</i>
Number of Miles	22,251,575	20,416,472	20,699,448	22,807,495	13,369,287

<i>Unlinked Passenger Trips</i>	<i>2007/08</i>	<i>2008/09</i>	<i>2009/10</i>	<i>2010/11</i>	<i>2011/12</i>
Number of Unlinked Trips	1,802,821	2,016,473	2,237,975	2,460,926	2,185,537

Source: National Transit Database (NTD), Space Coast Area Transit (SCAT). Image provided by www.ridescat.com

Votran



The Volusia County Council created the county's public transportation system, called Votran, in 1975. Votran is a service of Volusia County Government, and it currently operates 21 fixed routes, 2 flexible routes, trolley service, and paratransit Gold Service for older adults and persons with disabilities. A majority of the routes operate Monday through Saturday. Service spans from approximately 6 a.m. to 7 p.m., with an average of 60-minute headways.

Transit Service Supplied

<i>Vehicle Revenue Miles</i>	<i>2007/08</i>	<i>2008/09</i>	<i>2009/10</i>	<i>2010/11</i>	<i>2011/12</i>
Number of Miles	5,332,768	5,076,004	5,089,310	4,934,537	4,653,108

<i>Vehicle Revenue Hours</i>	<i>2007/08</i>	<i>2008/09</i>	<i>2009/10</i>	<i>2010/11</i>	<i>2011/12</i>
Number of Hours	330,808	310,659	305,596	299,363	298,722

<i>Vehicles in Max. Service</i>	<i>2007/08</i>	<i>2008/09</i>	<i>2009/10</i>	<i>2010/11</i>	<i>2011/12</i>
Number of Vehicles	133	129	129	146	108

Transit Service Consumed

<i>Passenger Miles Traveled</i>	<i>2007/08</i>	<i>2008/09</i>	<i>2009/10</i>	<i>2010/11</i>	<i>2011/12</i>
Number of Miles	21,292,105	20,731,955	20,995,871	18,258,768	15,858,124

<i>Unlinked Passenger Trips</i>	<i>2007/08</i>	<i>2008/09</i>	<i>2009/10</i>	<i>2010/11</i>	<i>2011/12</i>
Number of Unlinked Trips	3,678,179	3,429,608	3,572,005	3,857,158	3,848,303

Source: National Transit Database (NTD), Votran (Volusia County). Image provided by www.votran.org

Citrus Connection



The Lakeland Area Mass Transit District, known as the Citrus Connection, began services in 1982 with the mission to provide superior transportation services that contribute to the economic growth and quality of life for the communities they serve. The district operates 38 fixed-route buses and 15 Handy buses, paratransit services, in 15 fixed routes. Today the Citrus Connection delivers more than 6,000 people to work, play, school and other destinations every day. Additionally, the Lakeland Area Mass Transit District serves as a contractor to operate services in Winter Haven and express service to Bartow.

Transit Service Supplied

<i>Vehicle Revenue Miles</i>	<i>2007/08</i>	<i>2008/09</i>	<i>2009/10</i>	<i>2010/11</i>	<i>2011/12</i>
Number of Miles	1,732,713	1,687,921	1,700,804	1,557,915	1,046,543

<i>Vehicle Revenue Hours</i>	<i>2007/08</i>	<i>2008/09</i>	<i>2009/10</i>	<i>2010/11</i>	<i>2011/12</i>
Number of Hours	111,535	111,328	111,727	106,439	72,601

<i>Vehicles in Max. Service</i>	<i>2007/08</i>	<i>2008/09</i>	<i>2009/10</i>	<i>2010/11</i>	<i>2011/12</i>
Number of Vehicles	37	36	35	36	22

Transit Service Consumed

<i>Passenger Miles Traveled</i>	<i>2007/08</i>	<i>2008/09</i>	<i>2009/10</i>	<i>2010/11</i>	<i>2011/12</i>
Number of Miles	8,879,248	8,068,044	8,172,244	8,298,927	5,760,775

<i>Unlinked Passenger Trips</i>	<i>2007/08</i>	<i>2008/09</i>	<i>2009/10</i>	<i>2010/11</i>	<i>2011/12</i>
Number of Unlinked Trips	1,707,448	1,556,405	1,572,349	1,558,035	1,104,856

Source: National Transit Database (NTD), Lakeland Area Mass Transit District d.b.a. Citrus Connection. Image provided by www.ridecitrus.com

Polk County Transit Services



Polk County Transit Services (PCTS) serves as the Community Transportation Coordinator (CTC). The CTC ensures that coordinated transportation services are provided to meet the needs of the transportation disadvantaged population of Polk County. This population includes the most vulnerable, the elderly and disabled. The transportation service provides a safety net and gives citizens access to basic needs such as medical treatment, dialysis centers, nutritional and other life-sustaining services. Additionally, PCTS is the grant recipient and program administrator for Winter Haven Area Transit and "The Bus" rural fixed route system.

Transit Service Supplied

<i>Vehicle Revenue Miles</i>	<i>2007/08</i>	<i>2008/09</i>	<i>2009/10</i>	<i>2010/11</i>	<i>2011/12</i>
Number of Miles	806,426	1,911,551	1,893,236	1,931,472	1,931,447

<i>Vehicle Revenue Hours</i>	<i>2007/08</i>	<i>2008/09</i>	<i>2009/10</i>	<i>2010/11</i>	<i>2011/12</i>
Number of Hours	40,173	116,849	114,892	116,634	120,339

<i>Vehicles in Max. Service</i>	<i>2007/08</i>	<i>2008/09</i>	<i>2009/10</i>	<i>2010/11</i>	<i>2011/12</i>
Number of Vehicles	32	70	55	63	60

Transit Service Consumed

<i>Passenger Miles Traveled</i>	<i>2007/08</i>	<i>2008/09</i>	<i>2009/10</i>	<i>2010/11</i>	<i>2011/12</i>
Number of Miles	3,268,668	4,063,522	4,036,165	4,342,464	6,222,069

<i>Unlinked Passenger Trips</i>	<i>2007/08</i>	<i>2008/09</i>	<i>2009/10</i>	<i>2010/11</i>	<i>2011/12</i>
Number of Unlinked Trips	658,235	585,251	578,188	643,940	633,316

Source: National Transit Database (NTD), Polk County Transit Services (PCTS). Image provided by www.polk-county.net

SunTran



SunTran operates fixed-route bus service on six routes in the Ocala area. The SunTran bus fleet is equipped to carry disabled passengers, who ride at reduced fares. SunTran is a cooperative effort of the Ocala/Marion County Transportation Planning Organization, Marion County, the City of Ocala, the Florida Department of Transportation and the Federal Transportation Administration. Bus service is provided Monday through Saturday, from 5:00 a.m. through 8:00 p.m.

Transit Service Supplied

<i>Vehicle Revenue Miles</i>	<i>2007/08</i>	<i>2008/09</i>	<i>2009/10</i>	<i>2010/11</i>	<i>2011/12</i>
Number of Miles	390,000	438,000	438,000	442,000	437,406

<i>Vehicle Revenue Hours</i>	<i>2007/08</i>	<i>2008/09</i>	<i>2009/10</i>	<i>2010/11</i>	<i>2011/12</i>
Number of Hours	25,200	27,600	27,600	27,950	27,664

<i>Vehicles in Max. Service</i>	<i>2007/08</i>	<i>2008/09</i>	<i>2009/10</i>	<i>2010/11</i>	<i>2011/12</i>
Number of Vehicles	6	6	6	6	6

Transit Service Consumed

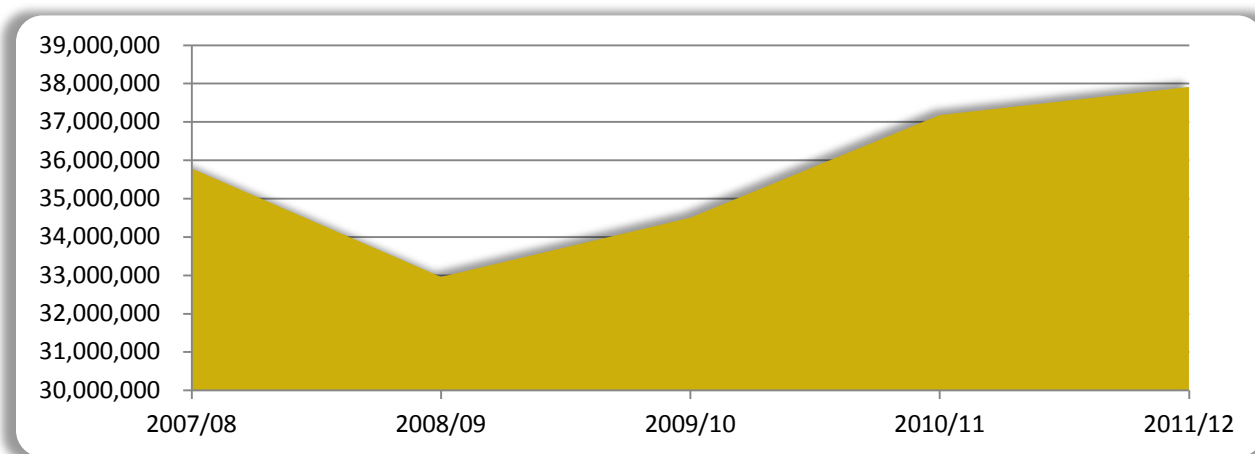
<i>Passenger Miles Traveled</i>	<i>2007/08</i>	<i>2008/09</i>	<i>2009/10</i>	<i>2010/11</i>	<i>2147346</i>
Number of Miles	1,224,300	1,234,200	1,211,100	1,369,500	2,147,346

<i>Unlinked Passenger Trips</i>	<i>2007/08</i>	<i>2008/09</i>	<i>2009/10</i>	<i>2010/11</i>	<i>2011/12</i>
Number of Unlinked Trips	371,000	374,000	367,000	415,000	421,521

Source: National Transit Database (NTD), SunTran. Image provided by www.ocalafl.org/suntran

Five-Year Historic Trend - Unlinked Transit Passenger Trips

This graph illustrates the five-year unlinked passenger trip trend total for Brevard, Lake, Marion, Orange, Osceola, Polk, Seminole, Sumter, and Volusia Counties - the CFMPOA region.



Aviation, Rail, Sea, and Space Port Statistics

Aviation is another important mode of transportation in the CFMPOA region. Due to the large number of tourists, business travelers, and residents flying to and from the Central Florida area, the region's international airports have experienced major growth during the past decade. More recently, they have proved to be indicators of the economy.

The CFMPOA region is served by four international airports:

- Orlando International Airport, Orange County (MCO)
- Orlando-Sanford International Airport, Seminole County (SFB)
- Melbourne International Airport, Brevard County (MLB)
- Daytona Beach International Airport, Volusia County (DAB)

Orlando International Airport, Orange County (MCO)



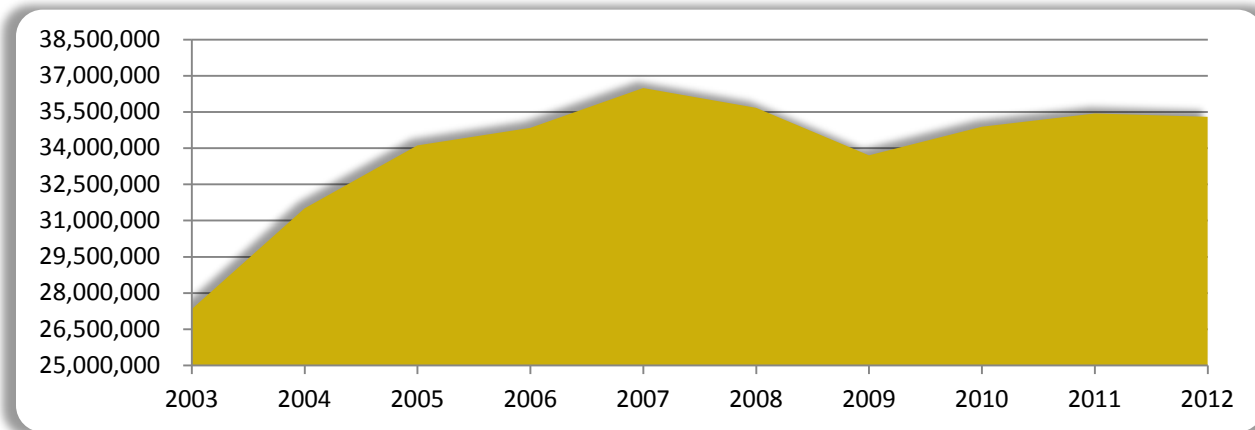
Due to the high-volume tourist market, Orlando International Airport continues to be one of the busiest airports in the U.S. It is the second-busiest airport in Florida, after Miami International; the 13th-busiest airport in the United States; and the 29th-busiest airport in the world, by passenger traffic. These tables show the number of passengers, tons of cargo, and operations at the Orlando International Airport from 2008 to 2012:

<i>Orlando Int'l Airport</i>	<i>2008</i>	<i>2009</i>	<i>2010</i>	<i>2011</i>	<i>2012</i>
Total Passengers	35,660,742	33,693,649	34,877,899	35,426,006	35,288,887
Tons of Cargo	178,501	155,535	172,001	187,095	172,957
Aircraft Operations	334,780	300,431	307,784	309,884	301,102

Source: Greater Orlando Aviation Authority

10-Year Historic Trend - Total Passengers

This graph illustrates the 10-year total passenger trend for Orlando International Airport.



Orlando-Sanford International Airport, Seminole County (SFB)

The Orlando-Sanford International Airport has also grown rapidly in recent years. It began as a place primarily for international chartered and scheduled flights to and from Europe, but it has developed into an alternative to Orlando International for north metro area residents. Orlando-Sanford handles international service, as well as domestic flights to a growing number of U.S. cities. In 2012, 75% of its passengers came from domestic flights.

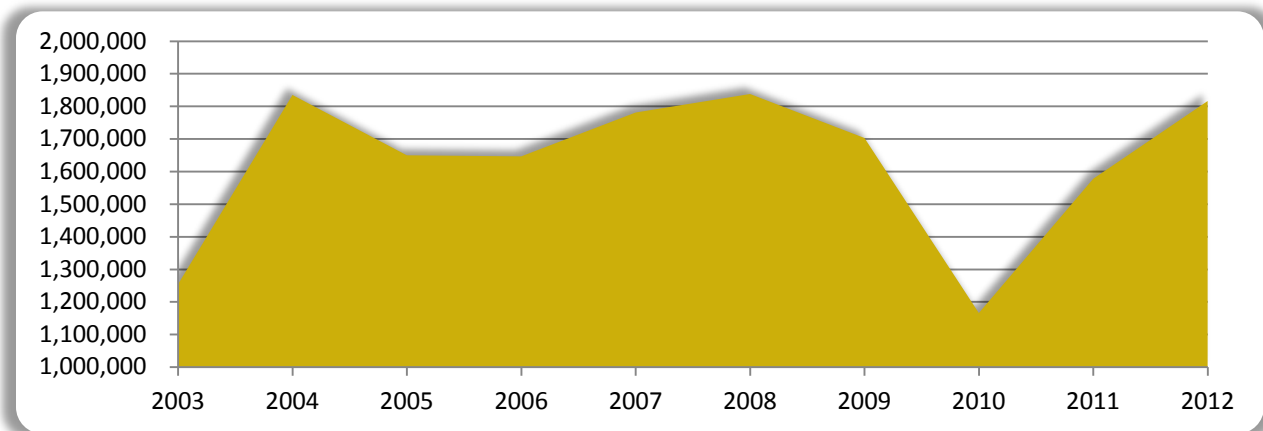
These tables show the number of passengers, tons of cargo, and operations at the Orlando- Sanford International Airport from 2007 to 2011:

<i>Orlando-Sanford Int'l</i>	<i>2008</i>	<i>2009</i>	<i>2010</i>	<i>2011</i>	<i>2012</i>
Total Passengers	1,837,247	1,702,412	1,165,435	1,577,307	1,815,729
Tons of Cargo	5,370	2,215	3,555	3,022	3,179
Aircraft Operations	225,011	219,745	189,675	218,181	301,072

Source: Sanford Airport Authority, Monthly Activity Report

10-Year Historic Trend - Total Passengers

This graph illustrates the 10-year total passenger trend for Orlando-Sanford International Airport.



Melbourne International Airport, Brevard County (MLB)

The Melbourne International Airport currently operates with three runways accommodating general-aviation, commercial, and cargo aircraft. The airport has five airlines operating out of eight gates and seven jet ways, which provide service primarily to the eastern United States as well as the Bahamas.

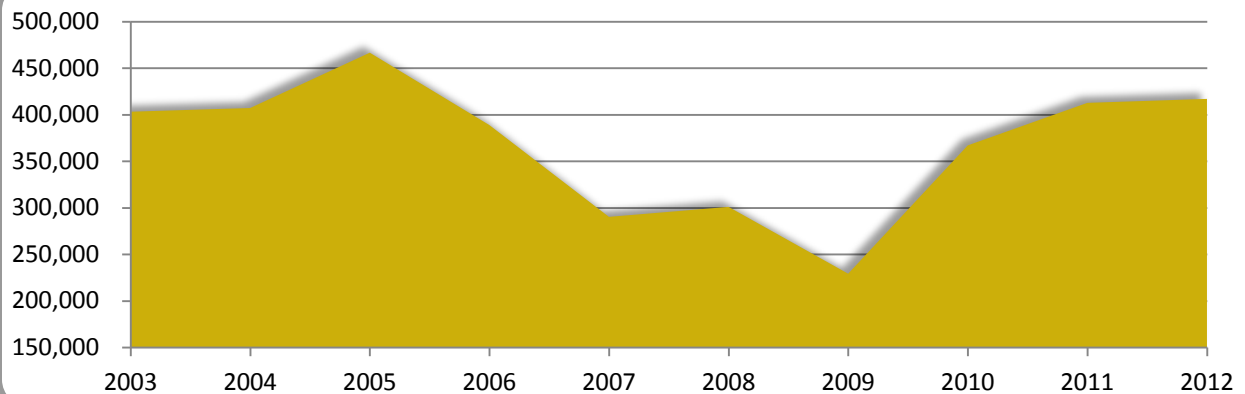
These tables show the number of passengers, tons of cargo, and operations at the Melbourne International Airport from 2007 to 2011:

<i>Melbourne Int'l Airport</i>	<i>2008</i>	<i>2009</i>	<i>2010</i>	<i>2011</i>	<i>2012</i>
Total Passengers	300,848	229,093	366,848	412,525	416,780
Tons of Cargo	770	56	72	504	1,104
Aircraft Operations	146,657	141,202	146,205	197,454	166,180

Source: Melbourne Airport Authority

10-Year Historic Trend - Total Passengers

This graph illustrates the 10-year total passenger trend for MLB



Daytona Beach International Airport, Volusia County (DAB)

The Daytona Beach International Airport is a 160,000-square-foot, modern, six-gate terminal complex. Currently, three major airlines operate out of this facility providing direct service to Atlanta and Charlotte, as well as the Bahamas.

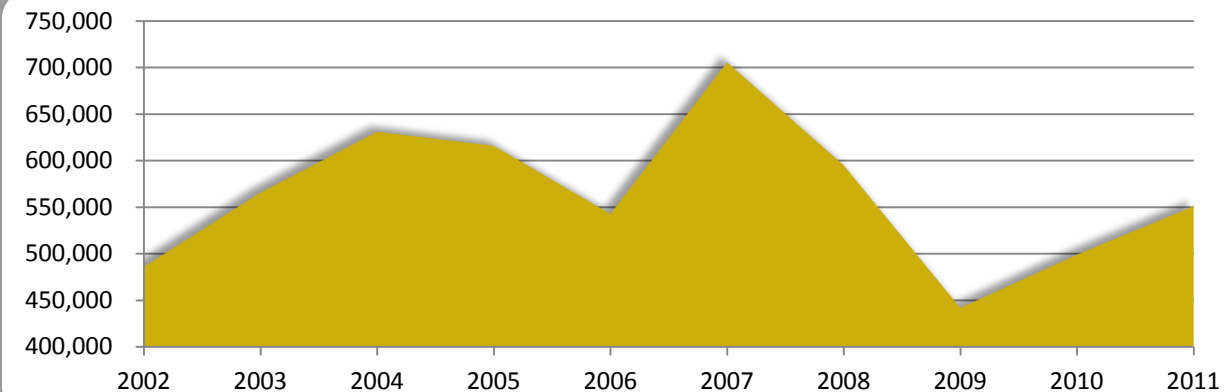
These tables show the number of passengers, tons of cargo, and operations at the Daytona Beach International Airport from 2007 to 2011:

Daytona Beach Int'l	2008	2009	2010	2011	2012
Total Passengers	594,871	423,725	498,978	550,986	584,280
Tons of Cargo	133	89	90	110	120
Aircraft Operations	340,932	311,801	267,173	220,962	284,512

Source: Daytona Beach International Airport

10-Year Historic Trend - Total Passengers

This graph illustrates the 10-year total passenger trend for DAB



Central Florida MPO Alliance Regional Total (MCO, SFB, MLB, DAB)

CFMPOA Region Total	2008	2009	2010	2011	2012
Total Passengers	38,379,071	36,048,879	36,909,160	37,966,824	38,105,676
Tons of Cargo	184,762	157,895	175,718	190,731	177,360
Aircraft Operations	1,047,406	973,183	910,837	946,481	1,052,866

Passenger Rail Service



Central Florida's passenger rail service is about to change dramatically. With SunRail commencing service in the spring of 2014, rail services will have a major impact on Central Florida's transportation systems. The project is considered the first piece of a larger passenger rail network planned for the region.

Currently, passenger rail service in the CFMPOA region is provided by Amtrak, which has stations in Deland, Winter Park, Orlando, Kissimmee, Lakeland, and Winter Haven. In addition to its regular passenger service, Amtrak's Auto Train operates daily between Lorton, Virginia (outside of

Washington, D.C.) and the Auto Train terminal off I-4 and SR 46 in Sanford. These tables show the number of rail passengers who used these stations from FY 2007/08 through FY 2011/12:

<i>Amtrak - Deland</i>	<i>2007/08</i>	<i>2008/09</i>	<i>2009/10</i>	<i>2010/11</i>	<i>2011/12</i>
Number of Passengers	24,854	25,965	25,982	28,663	28,553

<i>Amtrak - Kissimmee</i>	<i>2007/08</i>	<i>2008/09</i>	<i>2009/10</i>	<i>2010/11</i>	<i>2011/12</i>
Number of Passengers	38,495	41,054	43,163	47,823	48,521

<i>Amtrak - Lakeland</i>	<i>2007/08</i>	<i>2008/09</i>	<i>2009/10</i>	<i>2010/11</i>	<i>2011/12</i>
Number of Passengers	24,179	22,212	24,220	24,696	25,630

<i>Amtrak - Orlando</i>	<i>2007/08</i>	<i>2008/09</i>	<i>2009/10</i>	<i>2010/11</i>	<i>2011/12</i>
Number of Passengers	147,491	145,775	159,533	179,124	172,502

<i>AutoTrain - Sanford</i>	<i>2007/08</i>	<i>2008/09</i>	<i>2009/10</i>	<i>2010/11</i>	<i>2011/12</i>
Number of Passengers	234,839	232,955	244,252	259,944	264,096

<i>Amtrak - Winter Haven</i>	<i>2007/08</i>	<i>2008/09</i>	<i>2009/10</i>	<i>2010/11</i>	<i>2011/12</i>
Number of Passengers	21,079	22,881	22,992	26,188	24,565

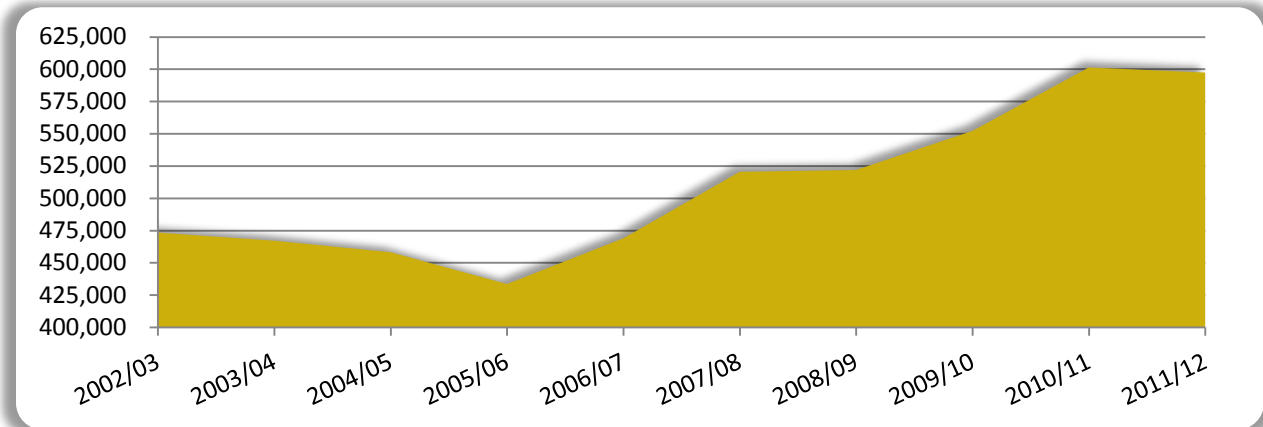
<i>Amtrak - Winter Park</i>	<i>2007/08</i>	<i>2008/09</i>	<i>2009/10</i>	<i>2010/11</i>	<i>2011/12</i>
Number of Passengers	29,514	30,998	31,962	34,858	33,455

<i>Amtrak - CFMPOA Region</i>	<i>2007/08</i>	<i>2008/09</i>	<i>2009/10</i>	<i>2010/11</i>	<i>2011/12</i>
Number of Passengers	520,451	521,840	552,104	601,296	597,322

Source: National Railroad Passenger Corporation d.b.a. Amtrak

10-Year Historic Trend - Amtrak Ridership

This graph illustrates the 10-year Amtrak total ridership trend for the seven stations within the CFMPOA region.



Port Canaveral Statistics



Port Canaveral is the second-busiest port in the world with its cruise lines, cargo lines and shippers capabilities. Although the port is in Brevard County, and thus outside of the Orlando Metropolitan Area, much of the cargo that is handled at the port, and many of the port's cruise ship passengers, are destined for this area. As a result, Port Canaveral is considered an important regional asset.

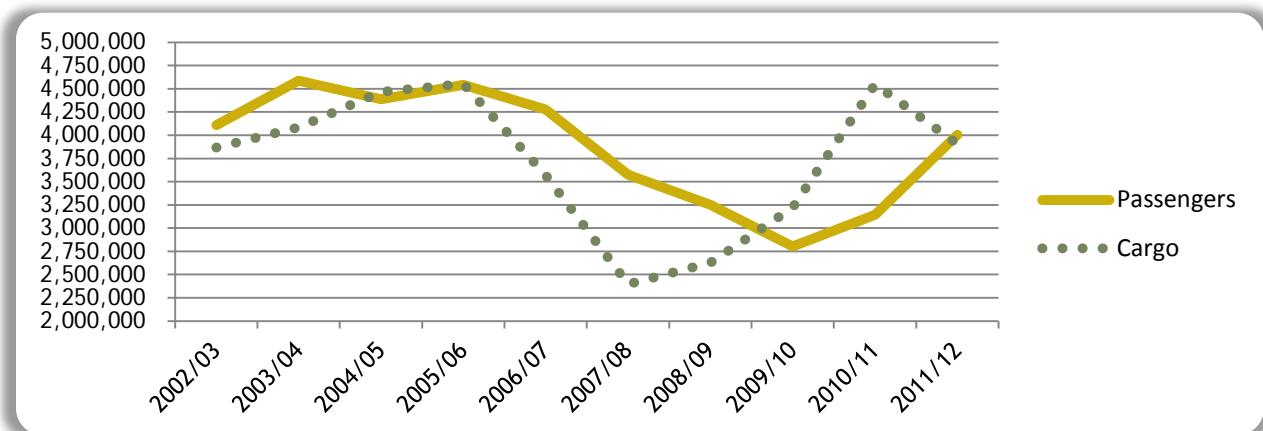
This port's freight and passenger statistics from FY 2007/08 through FY 2011/12 are shown in the following tables:

Port Canaveral	2007/08	2008/09	2009/10	2010/11	2011/12
Number of Passengers	3,573,960	3,250,775	2,802,951	3,144,668	4,004,283
Tons of Cargo	2,395,779	2,626,795	3,218,144	4,547,724	3,904,986

Source: Canaveral Port Authority

10-Year Historic Trend - Port Canaveral

This graph illustrates the 10-year passenger and cargo trend for Port Canaveral.



Space Launch Statistics



A form of transportation that is unique to the CFMPOA area is space travel. The area is home to the Cape Canaveral Spaceport in Brevard County, where NASA's space launches have taken place for more than 50 years. Although the Space Shuttle program ended in 2011, it is being replaced with NASA's Commercial Crew Program (CCP). CCP is an innovative public-private partnership that helps the aerospace industry in the U.S. to develop space transportation systems that can safely launch astronauts to the International Space Station (ISS) and other low-Earth orbit destinations.

NASA has committed about \$1.5 billion to develop commercial crew systems since 2010, with most of that awarded last year to The Boeing Co., Sierra Nevada Corp. and SpaceX. These three companies hope to complete system designs in 2014 and could launch crews on test flights from Kennedy Space Center (KSC) as soon as 2015 or 2016. Meanwhile, these companies continue to test and launch cargo missions to the ISS at KSC.

The number of space launches from 2008 through 2012 is shown in the table below.

<i>Space Launches</i>	<i>2008</i>	<i>2009</i>	<i>2010</i>	<i>2011</i>	<i>2012</i>
Space Shuttle	4	5	2	3	0
Satellite/Spacecraft	3	11	9	7	7
Total Launches	7	16	11	10	7

Source: *Space Florida*