

CENTRAL FLORIDA
MPO
ALLIANCE

Regional Indicators

A Report on Transportation System
Indicators for the Central Florida MPO Alliance

2010 - 2014



Table of Contents

EXECUTIVE SUMMARY

BACKGROUND.....	2
Key Findings	3
About the CFMPO Alliance	4

CHAPTER 1: REGIONAL PROFILE

Population	5
Employment and Unemployment	6
Hotel/Motel Rooms.....	7
Licensed Drivers	8
Registered Vehicles	8

CHAPTER 2: HIGHWAY STATISTICS

Local Road Mileage.....	9
State Road Mileage.....	9
Vehicle Miles Traveled.....	10
Major Roadway Traffic Counts	11

CHAPTER 3: HEALTH AND SAFETY STATISTICS

Automobile Safety.....	17
Pedestrian Safety.....	18
Bicyclist Safety.....	19
Air Quality Monitoring	20

CHAPTER 4: TRANSIT STATISTICS

LYNX	21
LakeXpress.....	21
Space Coast Area Transit.....	22
Votran	22
Citrus Connection	23
Polk County Transit Services	23
Sun Tran.....	24

CHAPTER 5: AVIATION, RAIL, SEA, AND SPACE PORT STATISTICS

Orlando International Airport (MCO).....	25
Orlando-Sanford International Airport (SFB)	25
Melbourne International Airport (MLB)	26
Daytona Beach International Airport (DAB).....	27
SunRail	28
Amtrak.....	30
Port Canaveral	31
Space Launches	31

Executive Summary

Transportation is a critical part of our lives. The quality of life and the economic vitality of our communities depend on an individual's access to work, education, health services and other destinations. The condition of our roads, walkways, transit, runways, and other transportation features directly affects the well being of our businesses and residents, as well as visitors.

The Central Florida Metropolitan Planning Organization Alliance (CFMPOA) is a coalition of Metropolitan Planning Organizations (MPOs) and Transportation Planning Organizations (TPOs) committed to addressing transportation challenges on a regional basis. The purpose of this report is to provide an overview of the transportation systems within the CFMPOA region and how they are affected by conditions such as the economy, population growth, technology, travel behavior, and funding. The goal is to assist CFMPOA region's policymakers and planning entities by disseminating information about key factors and emerging issues that impact Central Florida's transportation needs.

Methodology

This report was prepared by MetroPlan Orlando staff to establish a solid foundation of data to inform future policy decisions. The Regional Indicators report includes the latest data and information available at the time of publication for the various indicators used to measure transportation system activity over a five-year period. The beginning and ending years may vary for different indicators, depending on the data available.

Data was provided by several local and state agencies, including the Florida Department of Transportation, Florida's Turnpike Enterprise, and the Florida Department of Highway Safety and Motor Vehicles. Additional information was provided by the Florida Energy Office, the Florida Department of Environmental Protection, the Florida Department of Business and Professional Regulation, and the Florida Department of Revenue.

Local agencies that provided information include the Central Florida Expressway Authority (CFX), Central Florida Regional Transportation Authority (LYNX), LakeExpress, Space Coast Area Transit, Votran, Citrus Connection, Polk County Transit Services, Sun Tran, Greater Orlando Aviation Authority, Sanford Airport Authority, Kissimmee Gateway Airport, Melbourne International Airport, and the Daytona Beach International Airport. The Federal Aviation Administration, Amtrak, the U.S. Census Bureau, the University of Florida's Bureau of Economic and Business Research, the Florida Agency for Workforce Innovation, the Texas Transportation Institute, Space Florida and the Canaveral Port Authority provided additional information.

The CFMPOA would like to express appreciation to all these agencies for their assistance. The material contained in this report may be freely quoted with appropriate acknowledgement.

Key Findings

The 2010-2014 Regional Indicators report identifies several major trends and travel implications for the CFMPOA region. These include a growing and more diversified population; increasing visitor impact; aging infrastructure; concerns with pedestrian and bicyclist safety; and volatile revenues. This Executive Summary outlines the areas addressed in *Regional Indicators* and highlights some key findings.

Demographics

As of 2014, the population of the CFMPOA region had grown to 4,374,163, a 1% increase over 2013. The 18-24 age group continues to be the largest age cohort in the region, this could be attributed to a large number of higher-education campuses in our area and high employment in the arts, entertainment, and tourism sectors. (Chapter 1)

Visitor Impact

The area continues to see signs of economic recovery. According to Visit Orlando, over 62 million visitors came to Orlando in 2014. This sector alone has an economic impact of more than \$60 billion. Tourism also has a significant impact on our transportation system.

During that same period, Central Florida's major airports and seaport reported an increase in passenger counts, which also reflects healthy tourism in the state. The area airports experienced a 1% increase in passenger counts. And Port Canaveral saw a significant passenger increase of 12% in FY2014. (Chapter 5)

Travel Trends

The local economy was starting to see the signs of recovery normally reflected in area travel trends. In 2014, the CFMPOA region began to see an increase in the number of vehicle miles traveled, for instance. (Chapter 2)

Safety

Safety continues to be a factor that needs improvement in our transportation system. The area continues to experience an increase in vehicular crashes. In 2014, Automobile crashes increased by 14%, along with an increase in pedestrians injuries (12%) and fatalities (26%).

However, the area also has recorded some improvements in safety numbers. Vehicular fatalities and pedestrian injuries continue to see a decrease. Vehicular fatalities have seen a decrease by 17%; while bicyclist injuries decreased by 32% and bicyclist fatalities by 23%. (Chapter 3)

About Us

The Central Florida Metropolitan Planning Organization (MPO) Alliance is a coalition of transportation and government organizations committed to addressing transportation challenges on a regional basis. The group is made up of representatives from the nine-county Central Florida region.

The Alliance has a policy board of eighteen members, three from each of the six member organizations. Representatives from the Florida Department of Transportation participate as well. The group meets quarterly and operates on the basis of consensus. Staff support is provided by MetroPlan Orlando. The Central Florida MPO Alliance has established goals and is seeking to maximize all opportunities presented by a regional transportation forum.

MPO/TPO Staff Contact Information

Lake-Sumter MPO

(Lake and Sumter Counties)

Mr. TJ Fish, Executive Director

1616 South 14th Street

Leesburg, Florida 34748

(352) 315-0170

www.lakesumtermpo.com

Polk TPO

(Polk County)

Mr. Thomas Deardorff, Director

P.O. Box 9005; Drawer TS05

Bartow, Florida 33831

(863) 534-6486

www.polktpo.com

MetroPlan Orlando

(Orange, Osceola, and Seminole Counties)

Mr. Harold Barley, Executive Director

250 S. Orange Avenue, Suite 200

Orlando, Florida 32801

(407) 481-5672

www.metroplanorlando.com

Space Coast TPO

(Brevard County)

Mr. Bob Kamm, Executive Director

2725 Judge Fran Jamieson Way, Bldg. B, MS 82

Viera, Florida 32940

(321) 690-6890

www.spacecoasttpo.com

Ocala/Marion TPO

(City of Ocala and Marion County)

Mr. Greg Slay, Executive Director

P.O. Box 1270

Ocala, Florida 34478

(352) 629-8297

www.ocalamariontpo.org

River to Sea TPO

(Volusia County and the Cities of Flagler Beach and Beverly Beach within Flagler County)

Lois Bollenback, Executive Director

2570 W. International Speedway Blvd., Ste. 100

Daytona Beach, Florida 32114

(386) 226-0422

www.r2ctpo.org

Chapter 1: Regional Profile

The Central Florida MPO Alliance Area, which consists of Brevard, Lake, Marion, Orange, Osceola, Polk, Seminole, Sumter, and Volusia counties, has continuously grown throughout the years. Historically, the area's economy has largely been centered on the health care and social services, retail trade, and accommodations and food services sectors. The medical and high-tech industries have had a strong presence in the area with employers such as Florida Hospital, Adventist Health, Orlando Health, Health First, Halifax Health, Harris Corporation, United Space Alliance, and Lockheed Martin. Other major employers include Wal-Mart and Publix Supermarkets as well as Walt Disney, Universal, and Busch Entertainment.

Population

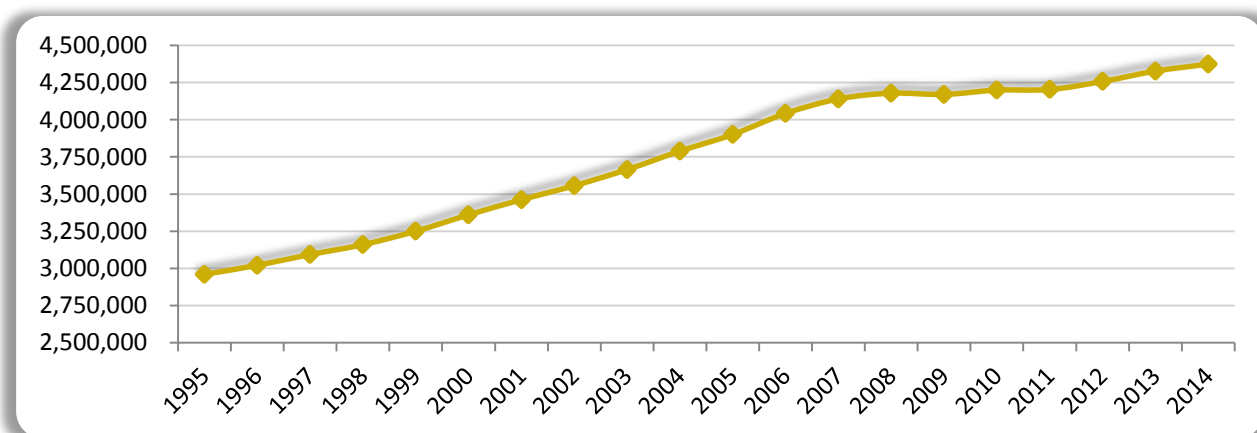
The mega-region saw its highest population growth between 2000 and 2007 with an average 3 percent growth per year. The economic recession slowed growth but the area is still experiencing a 1 percent population growth every year. This table shows population figures for the counties within the CFMPOA region from 2010 through 2014.

Population	CY 2010	CY 2011	CY 2012	CY 2013	CY 2014
Brevard County	543,376	543,700	545,625	548,424	552,176
Lake County	297,052	297,336	299,677	303,317	308,679
Marion County	331,298	327,221	322,989	335,008	331,813
Orange County	1,145,956	1,154,852	1,175,941	1,202,978	1,224,849
Osceola County	268,685	273,452	280,866	288,361	295,235
Polk County	602,095	601,249	606,888	613,950	619,860
Seminole County	422,718	424,422	428,104	431,074	436,926
Sumter County	93,420	87,604	100,198	105,104	102,724
Volusia County	494,593	493,593	497,145	498,978	501,901
CFMPOA Region	4,199,193	4,203,429	4,257,433	4,327,194	4,374,163

Source: University of Florida, Bureau for Economic and Business Research (BEBR)

Historic Population Overview for the CFMPOA Region

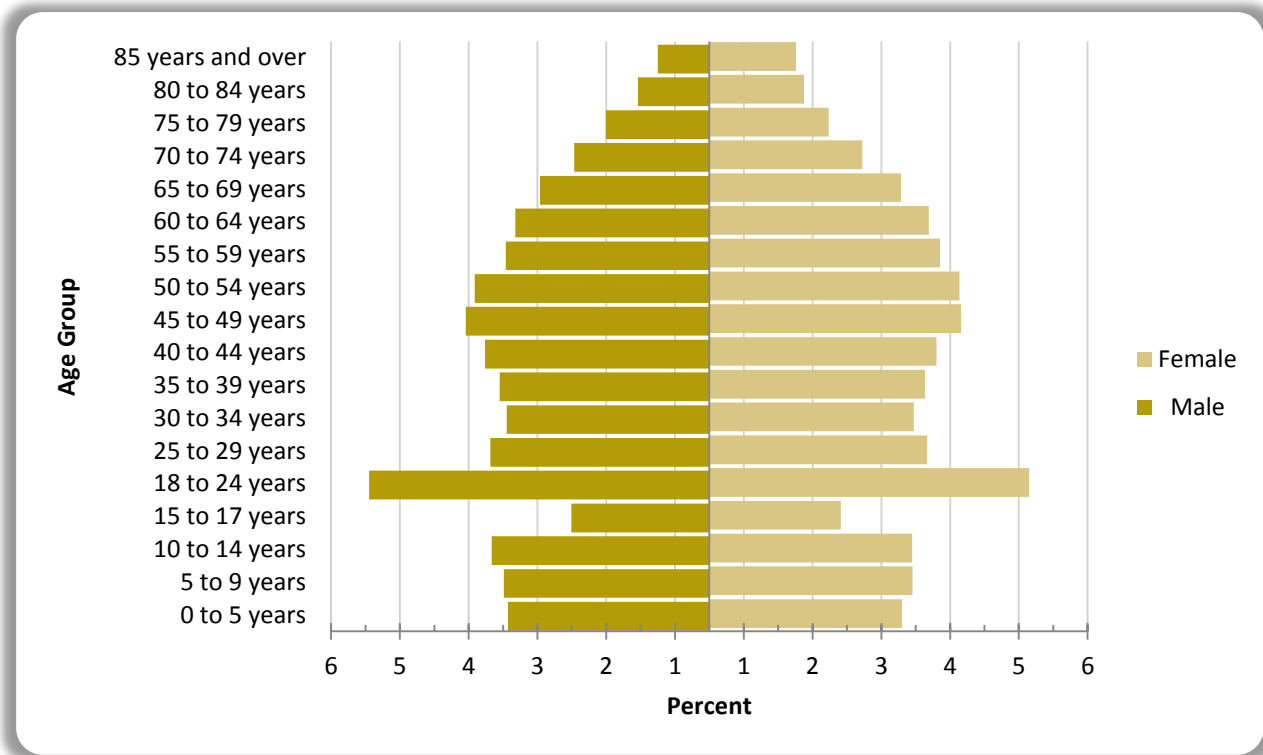
This graph illustrates the 20-year population trend total for Brevard, Lake, Marion, Orange, Osceola, Polk, Seminole, Sumter, and Volusia Counties - the CFMPOA region.



Source: University of Florida, Bureau for Economic and Business Research (BEBR)

CFMPOA Area Population by Age Group

This pyramid shows the male-female breakdown for the CFMPOA Area population. For both genders, the population in our area is largely young and middle-aged adults. The 18 to 24 age group is the largest, which could be attributed to an abundance of higher-education campuses in our area and the large number of jobs in the arts, entertainment, and tourism fields.



Source: Source: U.S. Census Bureau - American Community Survey, *General Population and Housing Characteristics: 2012*

Employment Levels

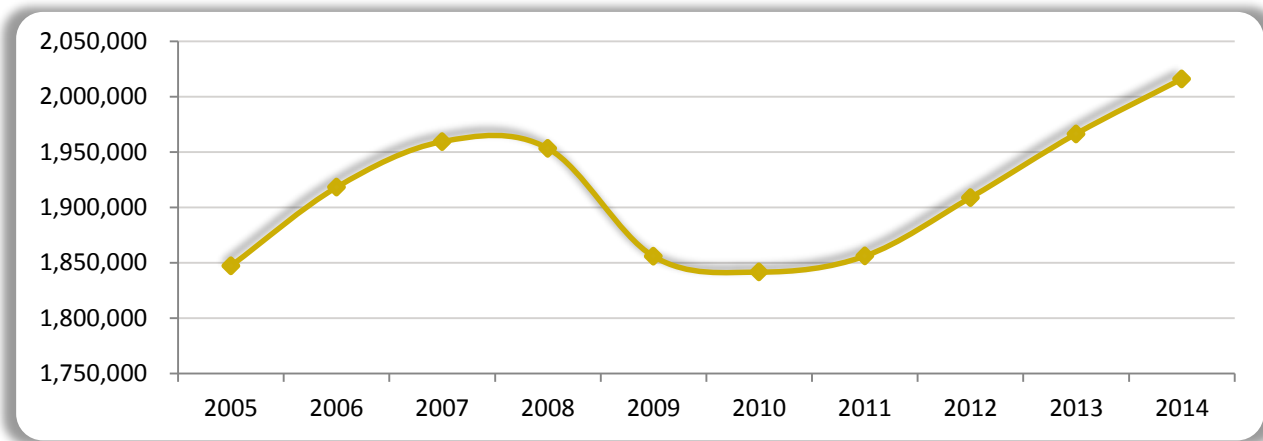
Employment rates affect congestion on our roadways. In theory, the higher the employment rate, the more vehicles on the road. This increase may cause congestion and longer travel times. The following tables show the number of employed and unemployed persons living in the CFMPOA area from 2010 through 2014.

Persons Employed	CY 2010	CY 2011	CY 2012	CY 2013	CY 2014
Brevard County	237,219	233,232	242,667	243,123	242,013
Lake County	121,121	122,882	116,861	119,603	130,439
Marion County	116,334	116,341	120,268	121,342	123,146
Orange County	535,509	543,294	572,602	602,385	642,229
Osceola County	123,591	125,388	124,398	133,438	141,532
Polk County	240,903	241,068	247,290	251,172	261,348
Seminole County	213,151	216,249	221,062	225,931	225,966
Sumter County	30,770	31,657	34,743	36,137	26,120
Volusia County	223,067	225,993	229,044	233,371	223,228
CFMPOA Region	1,841,665	1,856,104	1,908,935	1,966,502	2,016,021

Source: Florida Research and Economic Database, Local Area Employment Statistics (LAUS)

Historic Employment Overview for the CFMPOA Region

This graph illustrates the 10-year employment trend total for the CFMPOA region.



Unemployment

As the impacts of the economic recession begin to wear off, the CFMPOA region saw large decreases in unemployment levels. This table shows the unemployment rate in the CFMPOA area from 2010 through 2014:

Persons Employed	CY 2010	CY 2011	CY 2012	CY 2013	CY 2014
Brevard County	11.1	11.1	9.3	7.9	6.9
Lake County	12.3	11.2	9.1	7.5	6.4
Marion County	13.4	12.3	10.0	8.3	7.3
Orange County	11.1	10.3	8.5	6.8	5.8
Osceola County	12.4	11.6	9.4	7.5	6.7
Polk County	12.2	11.6	9.7	8.2	7.1
Seminole County	10.5	9.7	7.9	6.4	5.6
Sumter County	9.8	8.5	7.0	5.9	7.7
Volusia County	11.5	10.5	8.9	7.3	6.7
CFMPOA Region	11.6	10.8	8.9	7.3	6.7

Source: Florida Research and Economic Database, *Local Area Employment Statistics (LAUS)*

Hotel / Motel Rooms

Both leisure and business/convention travel are important components of the region's economy. As a result, there are a large number and variety of hotels and motels. This table shows the number of hotel/motel rooms in the CFMPOA region from 2010 through 2014:

Room Capacity	FY 2009/10	FY 2010/11	FY 2011/12	FY 2012/13	FY 2013/14
Brevard County	9,571	9,417	9,181	9,312	9,277
Lake County	3,054	2,989	2,989	2,995	2,995
Marion County	4,471	4,187	3,954	4,055	4,042
Orange County	83,021	84,046	86,007	86,571	87,662
Osceola County	26,132	25,330	24,921	25,115	24,435
Polk County	7,165	6,910	6,803	6,931	7,035
Seminole County	5,013	5,305	5,159	4,989	5,226
Sumter County	770	770	770	770	770
Volusia County	12,165	11,802	11,911	11,755	11,840
CFMPOA Region	151,362	150,756	151,695	152,493	153,282

Source: FL Department of Business and Professional Regulation, *Count of Active Licenses and Seats/Units by Type and FL County*

Licensed Drivers

The number of licensed drivers in the area is another indicator of traffic congestion levels. This table shows how many licensed drivers were in the CFMPOA region from 2010 through 2014:

Licensed Drivers	CY 2010	CY 2011	CY 2012	CY 2013	CY 2014
Brevard County	466,217	461,921	456,251	455,380	455,253
Lake County	249,179	249,085	247,764	249,442	248,163
Marion County	280,467	278,406	274,512	273,572	274,496
Orange County	876,077	880,791	883,215	893,288	908,946
Osceola County	223,721	225,934	228,454	233,733	237,620
Polk County	453,207	450,165	444,340	444,664	448,811
Seminole County	344,358	343,230	341,598	341,747	341,427
Sumter County	72,796	75,215	77,776	81,456	84,735
Volusia County	416,272	410,653	403,957	402,340	402,025
CFMPOA Region	3,382,294	3,375,400	3,357,867	3,375,622	3,401,476

Source: Florida Department of Highway Safety and Motor Vehicle, *Vehicle and Vessel Reports and Statistics*

Registered Vehicles

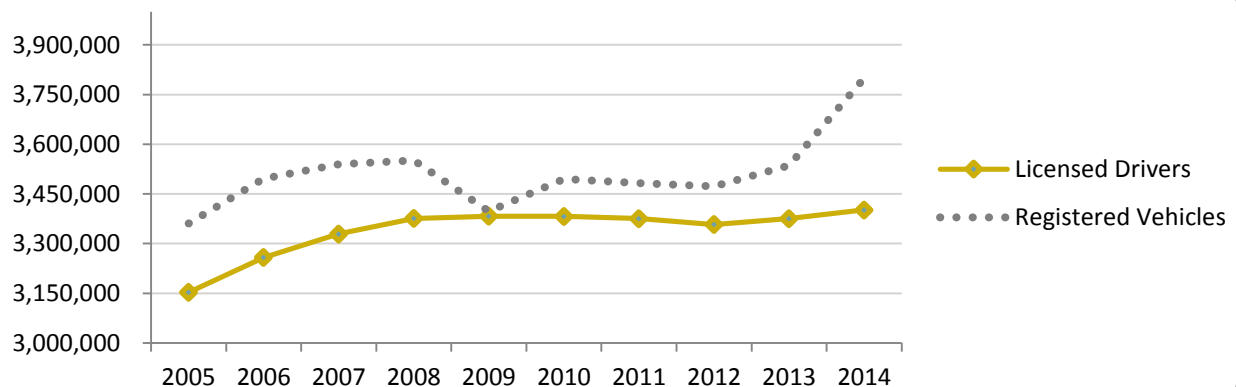
Another indicator that can be used to measure traffic congestion is the change in the number of vehicles on the road. The following table illustrates the number of registered motor vehicles in the CFMPOA region from FY 2010 through 2014:

Registered Vehicles	FY 2009/10	FY 2010/11	FY 2011/12	FY 2012/13	FY 2013/14
Brevard County	473,167	470,263	463,399	466,949	484,001
Lake County	253,763	252,449	248,331	251,548	267,939
Marion County	274,692	272,769	267,009	270,027	278,955
Orange County	935,280	934,894	951,239	1,064,468	1,199,398
Osceola County	197,960	201,017	208,232	211,717	233,724
Polk County	452,586	449,073	440,202	446,088	468,040
Seminole County	417,023	414,074	412,258	335,248	348,587
Sumter County	68,326	70,459	70,903	73,728	83,850
Volusia County	422,345	417,244	411,147	415,822	434,451
CFMPOA Region	3,495,142	3,482,242	3,472,720	3,535,595	3,798,945

Source: Florida Department of Highway Safety and Motor Vehicle, *Vehicle and Vessel Reports and Statistics*

Historic Comparison: Licensed Drivers and Registered Vehicles for the CFMPOA Region

This graph illustrates the 10-year comparison of licensed drivers and registered vehicles for Brevard, Lake, Marion, Orange, Osceola, Polk, Seminole, Sumter, and Volusia Counties - the CFMPOA region.



Source: Florida Department of Highway Safety and Motor Vehicle, *Vehicle and Vessel Reports and Statistics*

Chapter 2: Highway Statistics

Due to the region's steady population growth and development patterns in the past few decades, the private (and in many cases the single-occupant) automobile is the predominant mode of transportation. Several factors -- including time-of-day, travel demand, and multi-year construction delays -- have led to increased congestion throughout the CFMPOA region.

Local Road Mileage (Paved Centerline Miles)

Centerline miles represent the total length of a given road from its starting point to its end point regardless of the pavement width or number of lanes. This table shows the change in the number of miles of paved local roads in the CFMPOA region over the 2010-2014 timeframe. The numbers in the table reflect the centerline miles of paved roads, information that is collected annually from local governments by FDOT.

<i>Local Road Mileage</i>	<i>CY 2010</i>	<i>CY 2011</i>	<i>CY 2012</i>	<i>CY 2013</i>	<i>CY 2014</i>
Brevard County	2,798.4	2,799.6	2,885.9	2,887.1	2,892.3
Lake County	1,958.7	1,971.7	1,971.6	1,975.6	1,986.4
Marion County	2,942.3	2,999.0	3,025.2	3,028.6	3,049.0
Orange County	4,137.5	3,965.8	3,982.7	4,001.3	4,031.4
Osceola County	1,172.6	1,173.0	1,174.1	1,176.1	1,190.6
Polk County	3,564.7	3,571.6	3,607.8	3,625.3	3,621.9
Seminole County	1,481.8	1,479.7	1,476.8	1,486.0	1,496.4
Sumter County	743.7	811.1	808.3	827.0	856.5
Volusia County	2,836.2	2,854.7	2,854.0	2,868.0	2,866.0
CFMPOA Region	21,635.9	21,626.2	21,786.4	21,875.0	21,990.5

Source: Florida Department of Transportation, *Florida Highway Mileage Reports - City and County Roads*

State Road Mileage (Lane Miles)

Another indicator of the change in the amount of travel for the MPOs and TPOs in the CFMPOA region is the corresponding change in roadway lane mileage. Lane miles are calculated by multiplying the centerline mileage of a road by the number of lanes it has. Lane mileage provides a total amount of mileage covered by lanes belonging to a specific road. The lane miles of state roads in Brevard, Lake, Marion, Orange, Osceola, Polk, Seminole, Sumter, and Volusia Counties -- from 2010 through 2014-- are shown in the tables below. These have been divided into interstate facilities (such as I-4, I-75, and I-95); toll roads (such as SR 417, SR 528, and Florida's Turnpike); and other state roads (such as SR 50, SR 46, and SR 436).

<i>MetroPlan Orlando</i>	<i>CY 2010</i>	<i>CY 2011</i>	<i>CY 2012</i>	<i>CY 2013</i>	<i>CY 2014</i>
Interstate	316.3	311.8	311.6	311.6	311.6
Toll Roads	1,022.7	1,071.5	1,090.9	1,113.6	1,114.9
Other State Roads	1,746.4	1,761.2	1,764.6	1,768.4	1,779.7
Total	3,085.4	3,144.5	3,167.1	3,193.6	3,206.2

<i>Lake-Sumter MPO</i>	<i>CY 2010</i>	<i>CY 2011</i>	<i>CY 2012</i>	<i>CY 2013</i>	<i>CY 2014</i>
Interstate	130.4	130.4	130.4	130.4	130.4
Toll Roads	138.2	138.2	138.6	138.6	138.6
Other State Roads	875.4	879.8	903.0	903.0	904.9
Total	1,144.0	1,148.4	1,172.0	1,172.0	1,173.9

Space Coast TPO	CY 2010	CY 2011	CY 2012	CY 2013	CY 2014
Interstate	311.7	319.8	355.6	355.6	384.8
Toll Roads	35.9	35.9	53.0	53.0	52.9
Other State Roads	920.3	919.9	903.0	902.7	901.9
Total	1,267.9	1,275.6	1,311.6	1,311.3	1,339.6

River to Sea TPO	CY 2010	CY 2011	CY 2012	CY 2013	CY 2014
Interstate	359.4	359.4	359.6	359.0	359.0
Toll Roads	-	-	-	-	-
Other State Roads	965.6	965.7	966.0	966.0	965.1
Total	1,325.0	1,325.1	1,325.6	1,325.0	1,324.1

Note: River to Sea TPO lane mileage does not include roadway portions in Flagler Beach or Beverly Beach

Polk TPO	CY 2010	CY 2011	CY 2012	CY 2013	CY 2014
Interstate	195.4	195.4	195.4	194.4	195.4
Toll Roads	89.2	89.2	93.9	92.7	92.7
Other State Roads	1,336.7	1,336.7	1,347.7	1,357.1	1,359.0
Total	1,621.3	1,621.3	1,637.0	1,644.2	1,647.1

Ocala / Marion Co. TPO	CY 2010	CY 2011	CY 2012	CY 2013	CY 2014
Interstate	229.7	229.7	229.7	229.7	229.7
Toll Roads	-	-	-	-	-
Other State Roads	684.1	686.8	697.4	697.4	697.4
Total	913.8	916.5	927.1	927.1	927.1

CFMPOA Region Total	CY 2010	CY 2011	CY 2012	CY 2013	CY 2014
Interstate	1,542.9	1,551.0	1,581.7	1,580.7	1,610.9
Toll Roads	1,286.0	1,313.4	1,376.1	1,397.9	1,399.1
Other State Roads	6,528.5	6,541.8	6,581.7	6,594.6	6,608.0
Total	9,357.4	9,406.2	9,539.5	9,573.2	9,618.0

Source: Florida Department of Transportation, Mileage and Travel (DVMT) Reports - State Highway System

Vehicle Miles Traveled

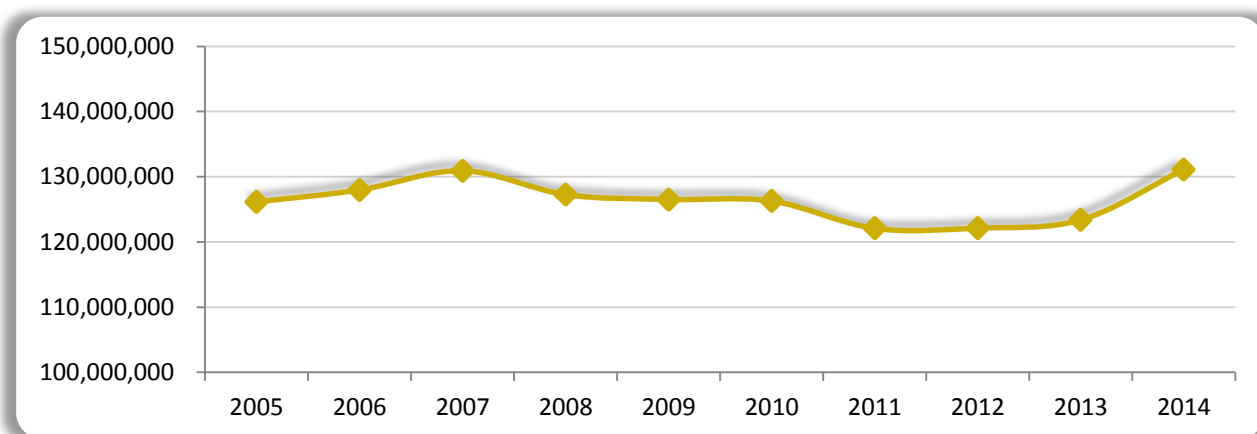
The number of vehicle miles traveled (VMT) on the highway network is an indicator that measures the growth in both the number of vehicles and the distances driven in the CFMPOA region. FDOT annually estimates the VMT for all counties in the state by multiplying the lengths of the state and local roads in the counties by the average daily trips on those roads. This table and graph illustrate the average daily VMTs in the CFMPOA region from 2010 through 2014:

Vehicle Miles Traveled	CY 2010	CY 2011	CY 2012	CY 2013	CY 2014
Brevard County	17,125,596	16,477,274	16,267,601	16,017,753	16,553,776
Lake County	8,054,672	7,906,575	7,870,747	8,008,896	8,751,068
Marion County	11,067,331	10,926,028	10,835,897	10,916,673	11,321,429
Orange County	35,657,527	33,325,315	34,099,958	34,904,854	36,389,540
Osceola County	8,639,272	8,650,963	8,807,344	8,951,705	10,034,811
Polk County	16,442,305	16,409,039	15,923,000	15,874,681	18,473,136
Seminole County	10,249,225	9,922,699	9,972,497	10,122,136	10,338,424
Sumter County	3,629,402	3,714,603	3,643,756	3,721,484	4,034,615
Volusia County	15,419,863	14,776,444	14,723,818	14,872,278	15,194,907
CFMPOA Region	126,285,193	122,108,940	122,144,618	123,390,460	131,091,706

Source: Florida Department of Transportation, Centerline Miles and Daily Vehicle Miles Traveled Report

10-Year Historic Trend - Vehicle Miles Traveled

This graph illustrates the 10-year VMT trend total for Brevard, Lake, Marion, Orange, Osceola, Polk, Seminole, Sumter, and Volusia Counties - the CFMPOA region.



Traffic Counts - Major Roadways

One of the main methods for measuring activity on an area's highway system is the collection of traffic counts on major roadways. More than 400 traffic counts for various locations in Brevard, Lake, Marion, Orange, Osceola, Polk, Seminole, Sumter, and Volusia counties are obtained each year by the Florida Department of Transportation.

The tables shown on pages 11-16 contain FDOT daily (24-hour) traffic counts averaged annually on major roadways in the region from 2010 through 2014:

Site No.	Interstate 95	CY 2010	CY 2011	CY 2012	CY 2013	CY 2014
700134	S of SR 514	35,500	34,330	35,277	35,000	39,614
700428	S of CR 516	48,500	34,000	24,000	31,500	55,000
700371	N of CR 516	78,000	55,000	68,000	65,000	67,500
700311	N of SR 500	78,000	55,000	39,000	39,500	41,000
700415	N of SR 518	68,500	37,500	69,500	7,600	76,500
700388	S of Fiske Blvd.	69,000	55,000	57,500	55,000	57,000
700365	S of SR 520	40,500	45,500	64,312	47,500	49,500
700401	S of SR 407	39,000	53,500	53,500	37,000	38,500
700363	N of Dairy Rd.	31,000	31,500	29,500	40,000	38,500
700436	N of CR 5A	24,500	30,500	30,000	26,500	27,000
790503	S of SR 44	32,000	31,000	31,000	32,500	35,000
790133	N of SR 44	38,000	36,599	36,921	36,601	37,725
790492	S of I-4	51,000	44,500	42,500	45,000	46,500
790494	S of LPGA Blvd.	70,500	74,500	71,500	71,500	75,500
790534	N of LPGA Blvd.	68,000	76,000	69,500	70,000	74,000
790495	S of SR 5	69,000	62,500	66,500	63,500	64,500
790496	N of SR 5	67,000	60,500	64,500	69,500	70,500

<i>Site No.</i>	<i>Interstate 4</i>	<i>CY 2010</i>	<i>CY 2011</i>	<i>CY 2012</i>	<i>CY 2013</i>	<i>CY 2014</i>
100104	E of Hillsborough Co. Line	108,500	104,500	112,500	113,000	116,000
160117	SW of W. Memorial Blvd.	87,000	85,500	84,000	81,000	88,500
160116	NE of SR 539/Kathleen Rd	79,000	81,000	84,000	79,000	87,500
160115	NE of US 98	74,000	77,000	77,500	75,500	82,500
160114	NE of Old Combee Rd.	65,500	70,000	74,000	69,500	73,500
160113	E of SR 33	64,500	68,000	68,000	66,000	73,500
169951	E of SR 559	71,500	72,500	76,500	80,554	83,842
160108	SW of US 27	75,000	75,500	77,500	75,500	84,500
160111	NE of US 27	99,000	95,500	103,000	105,500	110,500
920316	SW of SR 417	85,500	61,000	75,500	60,500	95,000
753007	at Florida's Turnpike	157,000	152,000	161,500	167,500	157,500
750196	N of Kaley Ave.	136,500	131,500	138,000	193,899	192,092
753051	S of SR 50	158,000	150,000	148,000	143,500	144,500
753056	N of Princeton St.	164,000	168,000	196,000	183,000	184,500
753074	N of Lee Rd.	170,500	124,000	149,000	180,000	181,500
750805	S of Seminole Co. Line	149,500	158,500	149,000	155,500	155,000
770267	N of SR 436	146,500	135,500	140,000	140,000	141,000
770343	N of SR 434	134,000	132,557	132,663	134,202	136,609
770268	S of CR 46A	126,500	125,000	125,000	123,500	135,500
770266	N of SR 46	115,000	109,500	103,000	107,500	114,500
799906	E of Enterprise Rd.	95,500	93,629	93,854	96,379	99,777
791003	SW of SR 472	86,500	79,500	88,000	88,500	89,500
790485	NE of SR 472	76,000	70,500	77,500	77,000	78,000
790497	SW of SR 44	65,000	62,000	55,500	60,500	65,500
790486	NE of SR 44	56,000	54,000	55,000	55,000	56,000
790491	W of I-95	43,000	43,000	40,000	40,000	41,000

<i>Site No.</i>	<i>SR 528</i>	<i>CY 2010</i>	<i>CY 2011</i>	<i>CY 2012</i>	<i>CY 2013</i>	<i>CY 2014</i>
970533	E of I-4	75,300	77,800	80,600	75,000	77,000
970610	W of John Young Pkwy	77,400	80,200	82,300	76,000	79,000
970534	E of US 441	64,400	68,500	70,000	66,000	70,000
970625	E of McCoy Rd.	81,200	85,800	87,000	81,000	83,000
950510	W of SR 436	84,500	69,500	80,840	83,500	81,000
750204	W of Goldenrod Rd.	63,000	34,500	69,920	65,836	69,626
750512	E of Narcoossee Rd.	44,000	55,910	54,280	56,500	59,500
750618	E of SR 417	40,000	34,000	48,430	45,500	53,000
750336	W of SR 520	39,200	38,759	38,427	39,111	41,418
750398	E of St. Johns River	27,500	26,500	28,500	33,000	41,418
700434	E of I-95	22,700	20,200	21,100	14,600	15,600
700377	W of US 1	37,500	39,500	35,000	36,000	40,000

<i>Site No.</i>	<i>US 192</i>	<i>CY 2010</i>	<i>CY 2011</i>	<i>CY 2012</i>	<i>CY 2013</i>	<i>CY 2014</i>
110470	E of US 27	37,000	39,000	40,000	43,500	43,500
920291	E of CR 545	43,000	41,000	48,500	51,500	53,000
921000	W of Orange County Line	48,000	58,000	58,000	64,500	56,000
920311	W of I-4	54,000	73,000	70,500	59,500	54,500
920313	SE of SR 535	54,000	50,000	50,000	52,000	52,000
920265	W of Hoagland Blvd.	58,500	58,590	59,133	59,966	60,836
925015	W of John Young Pkwy.	45,000	42,500	44,000	42,500	42,500
925017	E of US 441	45,500	44,000	46,000	44,500	41,000
927046	SE of Boggy Creek Rd.	38,500	40,500	35,000	26,500	26,500
920105	NW of Neptune Rd.	42,500	40,500	40,500	40,000	41,000
925021	E of Vermont Ave.	38,500	32,500	37,000	38,000	37,500
920032	W of CR 534	28,000	21,500	20,400	38,000	40,000
920302	E of CR 532	22,000	15,200	17,200	17,800	18,100
700090	W of I-95	6,100	6,300	6,200	6,600	7,000
700381	E of I-95	27,500	27,500	27,500	28,000	28,000
700024	W of Babcock St.	33,000	34,500	33,000	30,000	31,000
705205	W of US 1	17,100	16,900	15,700	16,000	16,700

<i>Site No.</i>	<i>SR 46</i>	<i>CY 2010</i>	<i>CY 2011</i>	<i>CY 2012</i>	<i>CY 2013</i>	<i>CY 2014</i>
110501	W of Round Lake Rd.	10,900	10,000	10,400	10,200	11,100
110001	E of CR 437 South	13,600	12,900	11,700	19,700	14,600
111019	E of CR 437 North	14,300	14,100	14,200	14,300	16,600
770074	E of Lake Co. Line	19,600	18,700	20,200	19,500	21,000
770287	W of I-4	30,500	14,800	14,800	28,500	28,000
770288	E of I-4	32,000	21,500	21,500	27,500	29,500
770103	W of Airport Blvd.	28,500	20,000	23,000	25,000	27,500
775050	W of US 17/92	16,600	17,100	N/C	23,500	23,500
775041	E of US 17/92	16,100	21,900	17,200	17,000	20,200
775038	E of CR-425	14,200	14,000	14,600	20,600	21,500
770299	W of St. Johns River	10,500	10,196	10,275	10,522	10,628
770168	E of CR 426	5,900	6,100	8,500	6,000	6,200
700416	2.5 mi. W of I-95	5,200	5,600	6,000	5,600	5,300
700002	E of I-95	7,700	7800	9100	7700	9200

<i>Site No</i>	<i>Florida's Turnpike</i>	<i>CY 2010</i>	<i>CY 2011</i>	<i>CY 2012</i>	<i>CY 2013</i>	<i>CY 2014</i>
972210	SE of I-75	33,700	35,000	34,000	33,000	33,000
979931	at CR 468	37,200	36,072	35,500	37,893	39,798
972200	NW of Lake Co. Line	36,400	36,000	36,000	35,000	36,000
972160	N of Palatka River	37,000	37,000	36,000	36,000	37,000
972006	at Leesburg Service Plaza	31,900	32,000	32,000	31,000	32,000
970428	S of CR 561	41,800	40,705	40,330	41,962	44,237
972004	S of SR 50	65,700	67,000	67,000	66,000	68,000
972003	W of SR 429	57,600	58,400	58,000	57,000	58,000
972020	N of SR 408	96,600	96,000	96,300	95,000	97,000
970505	at Turkey Lake Service P	63,400	66,000	72,000	78,000	81,000
972015	N of SR 528	69,400	70,900	71,100	71,000	73,000
972201	N of of Osceola Pkwy.	55,000	55,900	55,800	53,000	56,000
972000	S of US 441	46,700	47,800	48,300	46,000	49,000
972110	at Partin Settlement Rd.	31,000	31,500	31,900	31,000	34,000
970429	S of Neptune Rd.	33,100	33,177	33,100	35,797	38,254
972108	S of 3 Lakes Toll Plaza	25,300	25,000	25,000	27,000	29,000

<i>Site No.</i>	<i>SR 50</i>	<i>CY 2010</i>	<i>CY 2011</i>	<i>CY 2012</i>	<i>CY 2013</i>	<i>CY 2014</i>
180204	at CR 478A	53,000	5,300	5,300	5,300	5200
180021	W of SR 471	6,400	5,800	5,300	5,600	5800
180017	W of Lake Co. Line	7,300	7,500	6,900	7,300	7,200
110319	W of CR 565	11,200	10,600	9,900	19,000	11,500
110241	E of CR 565	18,600	16,100	16,800	19,000	19,100
1150576	E of SR 19	21,500	8,100	10,500	11,500	8,200
110426	W of CR 565A	23,000	22,500	23,000	22,500	24,500
115057	W of CR 561	23,000	22,000	22,000	23,500	23,000
115057	E of CR 561	25,500	24,000	26,000	25,500	27,500
115050	W of US 27	30,000	30,000	29,000	27,500	40,000
110300	W of Hancock Rd.	35,000	37,000	44,500	54,000	51,500
750572	E of Lake Co. Line	46,000	44,000	41,000	42,000	43,500
750038	E of CR 545	31,500	29,500	30,734	32,618	33,993
750304	E of Old Winter Garden Rd.	34,000	32,000	32,500	36,000	35,500
750354	E of Powers Dr.	36,000	29,500	37,000	36,500	38,500
755174	E of John Young Pkwy.	32,000	31,000	36,000	32,000	31,500
755162	E of Edgewater Dr.	36,500	32,500	33,500	35,500	35,500
750546	W of US 17/92	38,000	42,500	44,000	45,500	48,000
750444	E of Bennett Rd,	21,500	49,500	52,000	60,500	62,500
750226	E of SR 436	24,500	44,500	46,000	50,000	49,500
750037	E of Goldenrod Rd.	37,000	40,500	45,000	49,500	48,500
750115	E of Dean Rd.	41,000	38,000	43,000	47,500	48,000
750605	E of Alafaya Tr.	45,000	46,000	41,500	49,500	49,500
750104	W of SR 520	25,600	25,231	25,087	25,276	25,371
700383	W of I-95	10,900	9,900	10,700	10,200	10,300
700377	E of I-95	22,900	21,000	21,000	20,000	20,100
750137	W of US 1	12,800	12,300	12,100	14,200	13,400

<i>Site No.</i>	<i>Interstate 75</i>	<i>CY 2010</i>	<i>CY 2011</i>	<i>CY 2012</i>	<i>CY 2013</i>	<i>CY 2014</i>
180208	S of CR 476B	37,500	38,500	34,000	36,000	36,500
180194	S of SR 48	34,500	37,000	37,701	35,000	36,000
189920	S of Florida's Turnpike	41,000	41,424	39,544	40,900	42,323
180186	S of SR 44	61,500	59,000	58,500	60,000	61,500
180188	N of SR 44	65,000	67,500	62,500	64,000	66,500
360317	N of Williams Rd.	77,500	75,099	74,915	77,544	80,753
360440	S of SR 40	71,000	65,500	60,000	69,000	65,000
360439	S of US 27	69,000	67,500	65,000	63,500	69,000
360438	N of US 27	55,500	65,000	64,000	61,500	62,500
360437	N of SR 326	51,500	51,500	55,000	52,500	50,500
360436	N of CR 318	46,500	48,500	56,000	60,500	56,000

Site no.	US 17 / 92	CY 2010	CY 2011	CY 2012	CY 2013	CY 2014
160026	E of CR 555	21,900	21,500	16,300	28,000	28,500
165062	E of Experiment Station Rd.	15,200	15,200	16,887	16,300	16,700
160035	W of Kentucky Ave.	20,000	19,800	19,800	19,800	20,500
165056	W of 9th St. (Haines City)	16,900	16,700	22,000	22,000	23,000
165059	N of CR 580/ Johnson Ave.	11,100	11,100	11,600	11,600	11,800
160043	SW of CR 547	9,700	9,700	9,600	9,800	10,000
160125	NE of CR 54	7,500	7,500	9,950	7,400	7,600
921002	W CR-531	26,000	24,000	24,500	27,000	28,500
920003	S of Emmett St.	56,000	53,000	54,000	54,000	54,500
755051	N of SR 50	27,500	27,500	24,500	25,500	26,000
755058	S of Orange Ave.	26,000	25,000	25,500	26,000	26,000
755061	S of Lee Rd.	31,500	32,500	35,000	29,500	31,500
755129	N of Lake Ave.	51,000	48,500	51,500	52,000	51,500
750446	S of Maitland Blvd.	28,500	30,500	31,500	30,500	29,000
770018	N of Orange Co. Line	50,000	47,000	52,000	47,500	24,500
770152	N of SR 436	52,000	48,000	50,500	50,500	50,000
770273	N of SR 434	37,000	38,000	38,000	37,000	36,500
770009	S of CR 427	29,500	23,500	30,500	31,000	32,000
770104	S of Lake Mary Blvd.	35,000	34,000	32,000	36,500	34,500
775057	S of CR 46A	21,500	23,000	22,500	26,000	28,000
770245	S of SR 46	26,000	23,500	26,500	23,000	23,000
790101	S of Dirksen Rd.	25,000	23,500	22,500	23,000	24,000
790509	S of Saxon Blvd.	27,500	27,500	17,500	26,000	25,500
795165	S of Graves Ave.	30,000	29,000	26,500	29,000	27,500
790445	S of New York Ave.	28,000	27,000	26,000	27,000	25,000
791004	N of Golf Club Dr.	44,000	44,000	41,000	45,000	42,000
791006	N of SR 15A/Taylor Rd.	26,500	27,500	27,000	27,000	27,500
795173	N of Beresford Ave.	17,300	18,000	16,800	16,000	16,400
795004	S of SR 44/New York Ave.	15,300	16,600	16,000	16,300	14,800
795008	S of Minnesota Ave.	16,700	16,400	16,000	16,300	15,500
790066	N of Plymouth Ave.	22,000	21,500	22,500	20,500	21,000

Source: Florida Department of Transportation, AADR Report

Chapter 3: Health and Safety Statistics

Land-use planning, including transportation decisions, affects human health by influencing a wide range of environmental, physical, and social factors. Although the positive effects of mobility on health are substantial, the negative effects are also profound and costly. This chapter analyzes the safety statistics for motorists, pedestrians, and cyclists along with the CO₂ emissions produced by our transportation network.

Automobile Safety Statistics

In 2009, MetroPlan Orlando developed an online Geographic Information System (GIS) based crash database to provide its regional partners with an accessible crash analysis and reporting tool. This tool provides current crash and streets data, and it is being used by several law enforcement, traffic engineering, transportation planning agencies, and research institutions across the state. These tables show changes in the total number of auto occupant crashes, injuries and fatalities for each of the nine counties from 2010 through 2014.

<i>Automobile Crash</i>	<i>CY 2010</i>	<i>CY 2011</i>	<i>CY 2012</i>	<i>CY 2013</i>	<i>CY 2014</i>
Brevard County	4,873	5,283	6,230	6,975	7,265
Lake County	2,540	2,920	3,460	3,602	3,886
Marion County	3,422	3,734	4,102	4,183	4,688
Orange County	17,090	19,121	18,174	25,175	30,446
Osceola County	3,141	2,955	3,349	4,835	4,235
Polk County	5,579	5,537	6,061	7,499	8,835
Seminole County	2,440	3,192	3,199	3,715	5,512
Sumter County	720	836	605	709	1,022
Volusia County	5,811	5,225	6,386	7,138	7,192
CFMPOA Total	45,616	48,803	51,566	63,831	73,081

<i>Automobile Injury</i>	<i>CY 2010</i>	<i>CY 2011</i>	<i>CY 2012</i>	<i>CY 2013</i>	<i>CY 2014</i>
Brevard County	4,120	3,449	2,749	3,213	3,308
Lake County	2,432	2,060	1,499	2,380	1,610
Marion County	3,428	3,000	2,025	2,017	2,086
Orange County	14,898	13,824	12,938	14,807	10,936
Osceola County	2,933	2,388	2,752	3,006	2,178
Polk County	5,006	4,350	3,048	3,610	4,013
Seminole County	2,237	2,353	2,414	3,378	2,356
Sumter County	784	686	286	332	482
Volusia County	4,983	4,295	3,254	3,402	3,123
CFMPOA Total	40,821	36,405	30,965	36,145	30,092

Source: Florida Department of Highway Safety and Motor Vehicles & MetroPlan Orlando Web-Based Crash Database

<i>Automobile Fatality</i>	<i>CY 2010</i>	<i>CY 2011</i>	<i>CY 2012</i>	<i>CY 2013</i>	<i>CY 2014</i>
Brevard County	65	68	58	77	39
Lake County	40	48	35	38	27
Marion County	73	59	64	53	41
Orange County	130	130	111	94	95
Osceola County	34	46	23	31	33
Polk County	85	77	69	88	89
Seminole County	32	48	22	35	31
Sumter County	23	18	17	17	21
Volusia County	105	86	90	88	59
CFMPOA Total	587	580	489	521	435

Source: Florida Department of Highway Safety and Motor Vehicles & MetroPlan Orlando Web-Based Crash Database

Pedestrian Safety Statistics

Pedestrian safety affects the entire community; the young and old, drivers and walkers, at all times of the day or night. Many unnecessary injuries and fatalities occur because of intoxication or inattentiveness by both drivers and pedestrians. These tables show the changes in the total number of bicyclist and pedestrian injuries and fatalities from 2010 through 2014 as compiled by the Florida Department of Highway Safety and Motor Vehicles and MetroPlan's Web-Based Crash database for the CFMPOA region.

<i>Pedestrian Injury</i>	<i>CY 2010</i>	<i>CY 2011</i>	<i>CY 2012</i>	<i>CY 2013</i>	<i>CY 2014</i>
Brevard County	167	110	167	127	109
Lake County	69	58	60	47	48
Marion County	98	84	91	80	72
Orange County	380	430	480	498	590
Osceola County	73	81	57	80	90
Polk County	178	123	148	133	183
Seminole County	46	63	84	92	90
Sumter County	15	16	9	11	14
Volusia County	194	184	185	158	182
CFMPOA Total	1,220	1,149	1,281	1,226	1,378

<i>Pedestrian Fatality</i>	<i>CY 2010</i>	<i>CY 2011</i>	<i>CY 2012</i>	<i>CY 2013</i>	<i>CY 2014</i>
Brevard County	13	11	11	11	15
Lake County	9	9	5	4	7
Marion County	12	9	11	8	8
Orange County	42	31	42	36	39
Osceola County	4	14	2	6	13
Polk County	13	8	14	9	21
Seminole County	11	14	5	9	5
Sumter County	3	1	-	3	-
Volusia County	26	18	15	16	20
CFMPOA Total	133	115	105	102	128

Source: Florida Department of Highway Safety and Motor Vehicles & MetroPlan Orlando Web-Based Crash Database

Bicyclist Safety Statistics

As the number of bicyclists using the transportation network continues to increase, so could the number of injuries and fatalities. These charts show the changes in the total number of bicyclist injuries and fatalities from 2010 through 2014 for the CFMPOA region.

<i>Bicyclist Injuries</i>	<i>CY 2010</i>	<i>CY 2011</i>	<i>CY 2012</i>	<i>CY 2013</i>	<i>CY 2014</i>
Brevard County	112	112	147	104	94
Lake County	30	26	48	40	27
Marion County	36	42	68	38	32
Orange County	295	347	413	444	304
Osceola County	54	43	51	79	41
Polk County	108	62	115	73	75
Seminole County	64	96	89	128	45
Sumter County	5	4	4	7	12
Volusia County	174	128	179	173	112
CFMPOA Total	878	860	1,114	1,086	742

<i>Bicyclist Fatality</i>	<i>CY 2010</i>	<i>CY 2011</i>	<i>CY 2012</i>	<i>CY 2013</i>	<i>CY 2014</i>
Brevard County	-	4	3	7	5
Lake County	2	-	2	4	2
Marion County	1	-	1	1	1
Orange County	4	8	9	8	8
Osceola County	2	1	-	-	3
Polk County	2	3	3	4	3
Seminole County	1	4	-	6	-
Sumter County	-	2	1	-	-
Volusia County	4	4	2	5	5
CFMPOA Total	16	26	21	35	27

Source: Florida Department of Highway Safety and Motor Vehicles & MetroPlan Orlando Web-Based Crash Database

Air Quality

Air pollution is associated with several health issues, including asthma, heart disease, and cancer. Ground-level ozone, for which motor vehicle emissions are a primary source, has been a cause for concern in the Orlando Metropolitan Area in recent years. In 2015, the Federal Environmental Protection Agency (EPA) revised the standard for ozone from 75 parts per billion to 70 parts per billion in any eight-hour period. An area will be considered as nonattainment (not meeting the standard) if the average of the annual fourth-highest ozone readings at any monitoring site for the three-year period equals or exceeds the 70 parts per billion standard.

The following table shows the fourth-highest eight-hour average readings, shown in parts per billion, for the area from 2010 through 2014:

<i>Ozone Monitoring</i>	<i>CY 2010</i>	<i>CY 2011</i>	<i>CY 2012</i>	<i>CY 2013</i>	<i>CY 2014</i>
Melbourne (Brevard)	64	66	77	68	65
Freedom 7 Elem. (Brevard)	64	66	68	68	66
Lost Lake Elem. (Lake)	66	69	71	71	66
Ocala YMCA (Marion)	68	67	65	67	60
County Impound (Marion)	65	65	62	65	59
Winegard Elem. (Orange)	71	76	72	73	71
Lake Isle Estates (Orange)	70	78	73	68	78
Four Corners (Osceola)	67	68	66	74	72
Sikes Elem. (Polk)	64	69	85	72	66
Baptist Children's (Polk)	68	70	87	71	72
Seminole State (Seminole)	66	71	69	68	64
Port Orange (Volusia)	61	60	68	64	62
Daytona Blind Svc. (Volusia)	66	64	71	67	62

Source: Florida Department of Environmental Protection

Note: The three-year attainment average can be determined by averaging the last three years of ozone data for each station.

Chapter 4: Transit Statistics

As the highway system in the CFMPOA region becomes more congested, alternative modes of transportation are becoming increasingly important. Currently, the majority of transit users in the region rely heavily on transit services to get to work, shopping, etc. As a result, this service is essential to the area's economy and the quality of life of many of its citizens. This chapter looks at fixed-route bus, demand-response (paratransit), and vanpool services provided by the various transit agencies in the CFMPOA region. At the time publication National Transit Database 2014 data had not been posted. Numbers shown were provided by local transit agency staff.

LYNX

The LYNX service area comprises Orange, Osceola and Seminole counties, an area of approximately 2,500 square miles. While regular fixed route service does not reach the most rural portions of the service area, LYNX paratransit service is available within all portions of the county boundaries. The transit services provided by LYNX include: Fixed-Route Bus Service, LYMMO Downtown Circulator, Shuttle Services, Transportation Disadvantaged Service, and Van Pooling.

Transit Supplied

<i>Vehicle Revenue Miles</i>	<i>FY 2009/10</i>	<i>FY 2010/11</i>	<i>FY 2011/12</i>	<i>FY 2012/13</i>	<i>FY 2013/14</i>
Number of Miles	23,192,565	24,583,550	25,794,194	25,482,688	29,376,790

<i>Vehicle Revenue Hours</i>	<i>FY 2009/10</i>	<i>FY 2010/11</i>	<i>FY 2011/12</i>	<i>FY 2012/13</i>	<i>FY 2013/14</i>
Number of Hours	1,524,265	1,576,812	1,640,660	1,693,383	1,730,362

<i>Vehicles in Max. Service</i>	<i>FY 2009/10</i>	<i>FY 2010/11</i>	<i>FY 2011/12</i>	<i>FY 2012/13</i>	<i>FY 2013/14</i>
Number of Vehicles	464	484	529	571	608

Transit Consumed

<i>Passenger Miles Traveled</i>	<i>FY 2009/10</i>	<i>FY 2010/11</i>	<i>FY 2011/12</i>	<i>FY 2012/13</i>	<i>FY 2013/14</i>
Number of Miles	148,294,757	156,697,957	164,408,315	167,299,657	178,129,638

<i>Unlinked Passenger Trips</i>	<i>FY 2009/10</i>	<i>FY 2010/11</i>	<i>FY 2011/12</i>	<i>FY 2012/13</i>	<i>FY 2013/14</i>
Number of Unlinked Trips	24,780,704	26,996,158	29,250,069	29,853,083	30,141,247

Source: Central Florida Regional Transportation Authority d.b.a. LYNX, APTA (American Public Transportation Association)

LakeXpress

Public transportation services in Lake County include LakeXpress, the County's fixed-route bus service, and Lake County Connection paratransit services. LakeXpress maintains four fixed-route bus services: Lady Lake and Eustis via U.S. 441; Altoona to Zellwood; and two local routes -- one throughout the City of Leesburg and another through the City of Mount Dora. All routes operate on a one-hour headway schedule.

Transit Service Supplied

<i>Vehicle Revenue Miles</i>	<i>FY 2010/11</i>	<i>FY 2010/11</i>	<i>FY 2011/12</i>	<i>FY 2012/13</i>	<i>FY 2013/14</i>
Number of Miles	2,097,697	2,097,697	1,933,003	1,717,650	1,760,839

<i>Vehicle Revenue Hours</i>	<i>FY 2009/10</i>	<i>FY 2010/11</i>	<i>FY 2011/12</i>	<i>FY 2012/13</i>	<i>FY 2013/14</i>
Number of Hours	135,525	132,759	144,176	108,718	108,481

<i>Vehicles in Max. Service</i>	<i>FY 2009/10</i>	<i>FY 2010/11</i>	<i>FY 2011/12</i>	<i>FY 2012/13</i>	<i>FY 2013/14</i>
Number of Vehicles	63	63	63	58	56

Transit Service Consumed

<i>Passenger Miles Traveled</i>	<i>FY 2009/10</i>	<i>FY 2010/11</i>	<i>FY 2011/12</i>	<i>FY 2012/13</i>	<i>FY 2013/14</i>
Number of Miles	5,027,060	4,819,774	4,848,221	4,546,039	4,488,988

<i>Unlinked Passenger Trips</i>	<i>FY 2009/10</i>	<i>FY 2010/11</i>	<i>FY 2011/12</i>	<i>FY 2012/13</i>	<i>FY 2013/14</i>
Number of Unlinked Trips	450,376	449,430	463,941	476,131	461,006

Source: LakeXpress (Lake County)

Space Coast Area Transit (SCAT)

Space Coast Area Transit (SCAT) provides the majority of transit service in Brevard County, including both fixed-route and demand response services. SCAT currently operates 17 fixed routes, 1 dial-a-ride, paratransit service, vanpools, and the Volunteers-in-Motion program. Service spans from approximately 6 a.m. to 8:30 p.m., with an average of 60-minute frequencies.

Transit Service Supplied

<i>Vehicle Revenue Miles</i>	<i>FY 2009/10</i>	<i>FY 2010/11</i>	<i>FY 2011/12</i>	<i>FY 2012/13</i>	<i>FY 2013/14</i>
Number of Miles	4,229,611	4,124,518	4,075,039	4,095,511	4,283,153

<i>Vehicle Revenue Hours</i>	<i>FY 2009/10</i>	<i>FY 2010/11</i>	<i>FY 2011/12</i>	<i>FY 2012/13</i>	<i>FY 2013/14</i>
Number of Hours	194,727	192,183	189,935	193,087	193,031

<i>Vehicles in Max. Service</i>	<i>FY 2009/10</i>	<i>FY 2010/11</i>	<i>FY 2011/12</i>	<i>FY 2012/13</i>	<i>FY 2013/14</i>
Number of Vehicles	167	166	141	166	145

Transit Service Consumed

<i>Passenger Miles Traveled</i>	<i>FY 2009/10</i>	<i>FY 2010/11</i>	<i>FY 2011/12</i>	<i>FY 2012/13</i>	<i>FY 2013/14</i>
Number of Miles	20,699,448	22,807,495	23,661,724	25,902,092	26,873,487

<i>Unlinked Passenger Trips</i>	<i>FY 2009/10</i>	<i>FY 2010/11</i>	<i>FY 2011/12</i>	<i>FY 2012/13</i>	<i>FY 2013/14</i>
Number of Unlinked Trips	2,237,975	2,460,926	2,644,308	2,883,218	2,921,644

Source: Space Coast Area Transit (SCAT)

Votran

The Volusia County Council created the county's public transportation system, called Votran, in 1975. Votran is a service of Volusia County Government, and it currently operates 21 fixed routes, 2 flexible routes, trolley service, and paratransit Gold Service for older adults and persons with disabilities. Service spans from approximately 6 a.m. to 7 p.m., with an average of 60-minute headways.

Transit Service Supplied

<i>Vehicle Revenue Hours</i>	<i>FY 2009/10</i>	<i>FY 2010/11</i>	<i>FY 2011/12</i>	<i>FY 2012/13</i>	<i>FY 2013/14</i>
Number of Hours	305,596	299,363	298,722	307,211	311,701

<i>Vehicles in Max. Service</i>	<i>FY 2009/10</i>	<i>FY 2010/11</i>	<i>FY 2011/12</i>	<i>FY 2012/13</i>	<i>FY 2013/14</i>
Number of Vehicles	129	146	108	121	125

Transit Service Consumed

<i>Passenger Miles Traveled</i>	<i>FY 2009/10</i>	<i>FY 2010/11</i>	<i>FY 2011/12</i>	<i>FY 2012/13</i>	<i>FY 2013/14</i>
Number of Miles	20,995,871	18,258,768	15,858,124	17,938,903	14,917,228

<i>Unlinked Passenger Trips</i>	<i>FY 2009/10</i>	<i>FY 2010/11</i>	<i>FY 2011/12</i>	<i>FY 2012/13</i>	<i>FY 2013/14</i>
Number of Unlinked Trips	3,572,005	3,857,158	3,848,303	4,024,638	4,013,072

Source: Votran (Volusia County), APTA (American Public Transportation Association)

Citrus Connection

The Lakeland Area Mass Transit District, known as the Citrus Connection, operates 38 fixed-route buses and 15 Handy buses, paratransit services, in 15 fixed routes. Today the Citrus Connection delivers more than 6,000 people to work, play, school and other destinations every day. Additionally, the Lakeland Area Mass Transit District serves as a contractor to operate services in Winter Haven and express service to Bartow.

Transit Service Supplied

<i>Vehicle Revenue Miles</i>	<i>FY 2009/10</i>	<i>FY 2010/11</i>	<i>FY 2011/12</i>	<i>FY 2012/13</i>	<i>FY 2013/14</i>
Number of Miles	1,700,804	1,557,915	1,046,543	1,333,092	935,371

<i>Vehicle Revenue Hours</i>	<i>FY 2009/10</i>	<i>FY 2010/11</i>	<i>FY 2011/12</i>	<i>FY 2012/13</i>	<i>FY 2013/14</i>
Number of Hours	111,727	106,439	72,601	102,057	69,077

<i>Vehicles in Max. Service</i>	<i>FY 2009/10</i>	<i>FY 2010/11</i>	<i>FY 2011/12</i>	<i>FY 2012/13</i>	<i>FY 2013/14</i>
Number of Vehicles	35	36	22	32	35

Transit Service Consumed

<i>Passenger Miles Traveled</i>	<i>FY 2009/10</i>	<i>FY 2010/11</i>	<i>FY 2011/12</i>	<i>FY 2012/13</i>	<i>FY 2013/14</i>
Number of Miles	8,172,244	8,298,927	5,760,775	6,962,739	6,641,122

<i>Unlinked Passenger Trips</i>	<i>FY 2009/10</i>	<i>FY 2010/11</i>	<i>FY 2011/12</i>	<i>FY 2012/13</i>	<i>FY 2013/14</i>
Number of Unlinked Trips	1,572,349	1,558,035	1,104,856	1,318,689	1,215,338

Source: Lakeland Area Mass Transit District d.b.a. Citrus Connection.

Polk County Transit Services

Polk County Transit Services (PCTS) serves as the Community Transportation Coordinator (CTC). The transportation service provides a safety net and gives citizens access to basic needs such as medical treatment, dialysis centers, nutritional and other life-sustaining services. Additionally, PCTS is the grant recipient and program administrator for Winter Haven Area Transit and "The Bus" rural fixed route system.

Transit Service Supplied

<i>Vehicle Revenue Miles</i>	<i>FY 2009/10</i>	<i>FY 2010/11</i>	<i>FY 2011/12</i>	<i>FY 2012/13</i>	<i>FY 2013/14</i>
Number of Miles	1,893,236	1,931,472	1,931,447	1,965,504	518,864

<i>Vehicle Revenue Hours</i>	<i>FY 2009/10</i>	<i>FY 2010/11</i>	<i>FY 2011/12</i>	<i>FY 2012/13</i>	<i>FY 2013/14</i>
Number of Hours	114,892	116,634	120,339	121,982	38,893

<i>Vehicles in Max. Service</i>	<i>FY 2009/10</i>	<i>FY 2010/11</i>	<i>FY 2011/12</i>	<i>FY 2012/13</i>	<i>FY 2013/14</i>
Number of Vehicles	55	63	60	59	23

Transit Service Consumed

<i>Passenger Miles Traveled</i>	<i>FY 2009/10</i>	<i>FY 2010/11</i>	<i>FY 2011/12</i>	<i>FY 2012/13</i>	<i>FY 2013/14</i>
Number of Miles	4,036,165	4,342,464	6,222,069	6,472,268	661,588

<i>Unlinked Passenger Trips</i>	<i>FY 2009/10</i>	<i>FY 2010/11</i>	<i>FY 2011/12</i>	<i>FY 2012/13</i>	<i>FY 2013/14</i>
Number of Unlinked Trips	578,188	643,940	633,316	632,557	54,594

Source: Polk County Transit Services (PCTS).

SunTran

SunTran operates fixed-route bus service on six routes in the Ocala area. The SunTran bus fleet is equipped to carry disabled passengers, who ride at reduced fares. SunTran is a cooperative effort of the Ocala/Marion County Transportation Planning Organization, Marion County, the City of Ocala, the Florida Department of Transportation and the Federal Transportation Administration. Bus service is provided Monday through Saturday, from 5:00 a.m. through 10:00 p.m with an average headway of 70 minutes.

Transit Service Supplied

<i>Vehicle Revenue Miles</i>	<i>FY 2009/10</i>	<i>FY 2010/11</i>	<i>FY 2011/12</i>	<i>FY 2012/13</i>	<i>FY 2013/14</i>
Number of Miles	438,000	442,000	437,406	511,252	487,296

<i>Vehicle Revenue Hours</i>	<i>FY 2009/10</i>	<i>FY 2010/11</i>	<i>FY 2011/12</i>	<i>FY 2012/13</i>	<i>FY 2013/14</i>
Number of Hours	27,600	27,950	27,664	34,501	31,065

<i>Vehicles in Max. Service</i>	<i>FY 2009/10</i>	<i>FY 2010/11</i>	<i>FY 2011/12</i>	<i>FY 2012/13</i>	<i>FY 2013/14</i>
Number of Vehicles	6	6	6	8	6

Transit Service Consumed

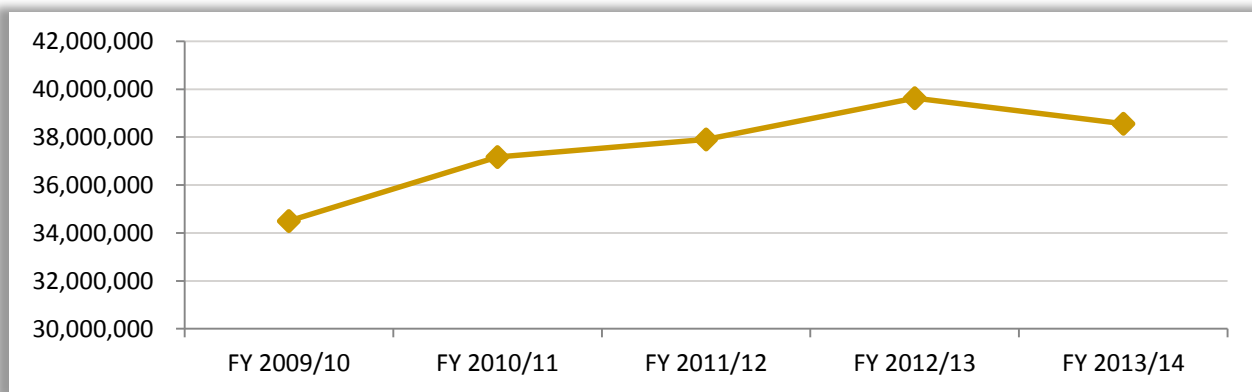
<i>Passenger Miles Traveled</i>	<i>FY 2009/10</i>	<i>FY 2010/11</i>	<i>FY 2011/12</i>	<i>FY 2012/13</i>	<i>FY 2013/14</i>
Number of Miles	1,211,100	1,369,500	2,147,346	2,250,998	2,659,742

<i>Unlinked Passenger Trips</i>	<i>FY 2009/10</i>	<i>FY 2010/11</i>	<i>FY 2011/12</i>	<i>FY 2012/13</i>	<i>FY 2013/14</i>
Number of Unlinked Trips	367,000	415,000	421,521	439,783	436,063

Source: SunTran.

Five-Year Historic Trend - Unlinked Transit Passenger Trips

This graph illustrates the five-year unlinked passenger trip trend total for Brevard, Lake, Marion, Orange, Osceola, Polk, Seminole, Sumter, and Volusia Counties - the CFMPOA region.



Chapter 5: Aviation, Rail, Sea, and Space Port Statistics

Aviation is another important mode of transportation in the CFMPOA region. Due to the large number of tourists, business travelers, and residents flying to and from the Central Florida area, the region's international airports have experienced major growth during the past decade.

The CFMPOA region is served by four international airports:

- Orlando International Airport, Orange County (MCO)
- Orlando-Sanford International Airport, Seminole County (SFB)
- Melbourne International Airport, Brevard County (MLB)
- Daytona Beach International Airport, Volusia County (DAB)

Orlando International Airport, Orange County (MCO)

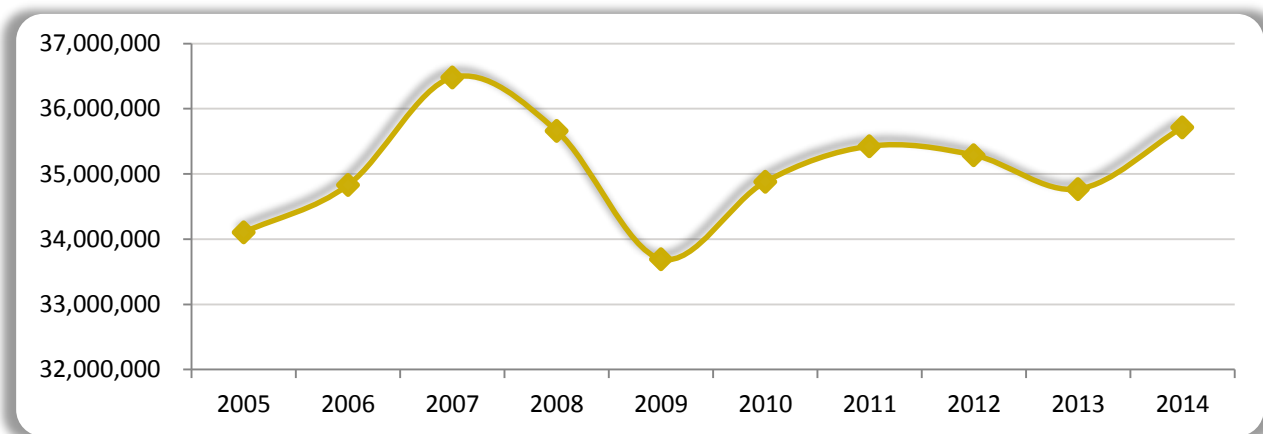
Due to the high-volume tourist market, Orlando International Airport continues to be one of the busiest airports in the U.S. It is the second-busiest airport in Florida, after Miami International; the 13th-busiest airport in the United States; and the 29th-busiest airport in the world, by passenger traffic. These tables show the number of passengers, tons of cargo, and operations at the Orlando International Airport from 2010 to 2014:

<i>Orlando Int'l Airport</i>	<i>CY 2010</i>	<i>CY 2011</i>	<i>CY 2012</i>	<i>CY 2013</i>	<i>CY 2014</i>
Total Passengers	34,877,899	35,426,006	35,288,887	34,768,544	35,714,612
Tons of Cargo	172,001	187,095	172,957	169,725	174,869
Aircraft Operations	307,784	309,884	301,102	291,662	290,331

Source: Greater Orlando Aviation Authority

10-Year Historic Trend - Total Passengers

This graph illustrates the 10-year total passenger trend for Orlando International Airport.



Orlando-Sanford International Airport, Seminole County (SFB)

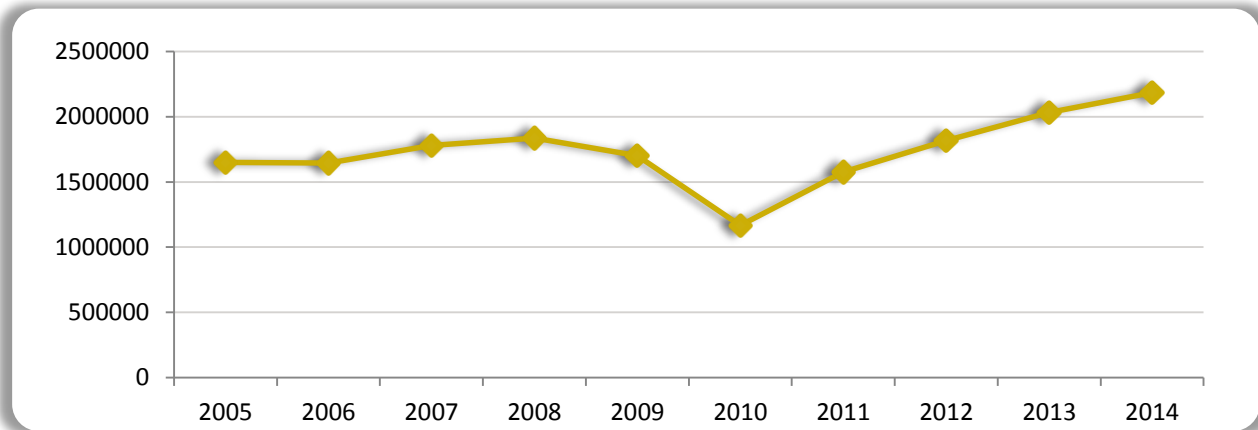
The Orlando-Sanford International Airport has also grown rapidly in recent years. It began as a place primarily for international chartered and scheduled flights to and from Europe, but it has developed into an alternative to Orlando International for north metro area residents. Orlando-Sanford handles international service, as well as domestic flights to a growing number of U.S. cities. The following tables show the number of passengers, tons of cargo, and operations at the Orlando-Sanford International Airport from 2010 to 2014:

<i>Orlando-Sanford Int'l</i>	<i>CY 2010</i>	<i>CY 2011</i>	<i>CY 2012</i>	<i>CY 2013</i>	<i>CY 2014</i>
Total Passengers	1,165,435	1,577,307	1,815,729	2,032,680	2,184,701
Tons of Cargo	3,555	3,022	3,179	3,112	1,627
Aircraft Operations	189,675	218,181	301,072	269,708	220,630

Source: Sanford Airport Authority, *Monthly Activity Report*

10-Year Historic Trend - Total Passengers

This graph illustrates the 10-year total passenger trend for Orlando-Sanford International Airport.



Melbourne International Airport, Brevard County (MLB)

The Melbourne International Airport currently operates with three runways accommodating general aviation, commercial, and cargo aircraft. The airport has five airlines operating out of eight gates and seven jet ways, which provide service primarily to the eastern United States as well as the Bahamas.

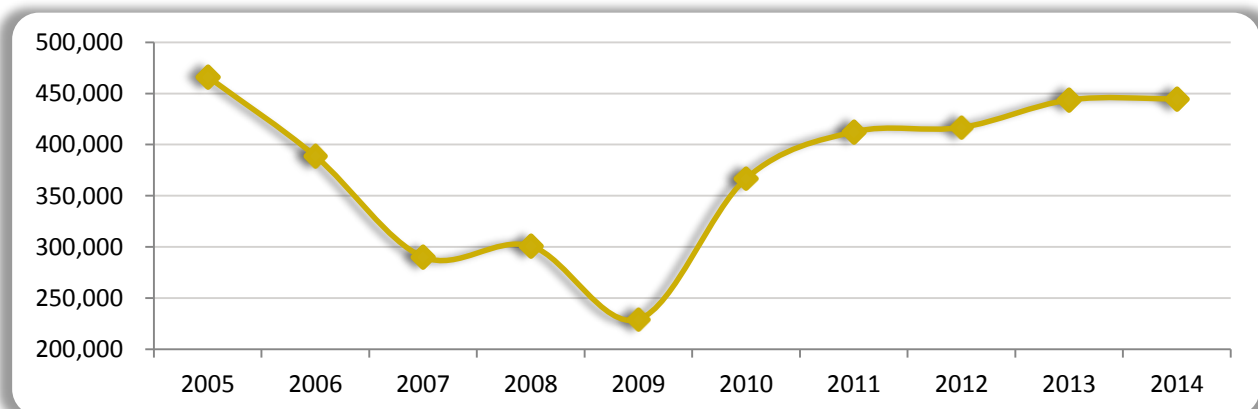
These tables show the number of passengers, tons of cargo, and operations at the Melbourne International Airport from 2010 to 2014:

<i>Melbourne Int'l Airport</i>	<i>CY 2010</i>	<i>CY 2011</i>	<i>CY 2012</i>	<i>CY 2013</i>	<i>CY 2014</i>
Total Passengers	366,848	412,525	416,780	443,717	444,844
Tons of Cargo	72	504	242	107	121
Aircraft Operations	146,205	197,454	159,112	131,140	121,370

Source: Melbourne Airport Authority

10-Year Historic Trend - Total Passengers

This graph illustrates the 10-year total passenger trend for MLB



Daytona Beach International Airport, Volusia County (DAB)

The Daytona Beach International Airport is a 160,000-square-foot, modern, six-gate terminal complex. Currently, three major airlines operate out of this facility providing direct service to Atlanta and Charlotte, as well as the Bahamas.

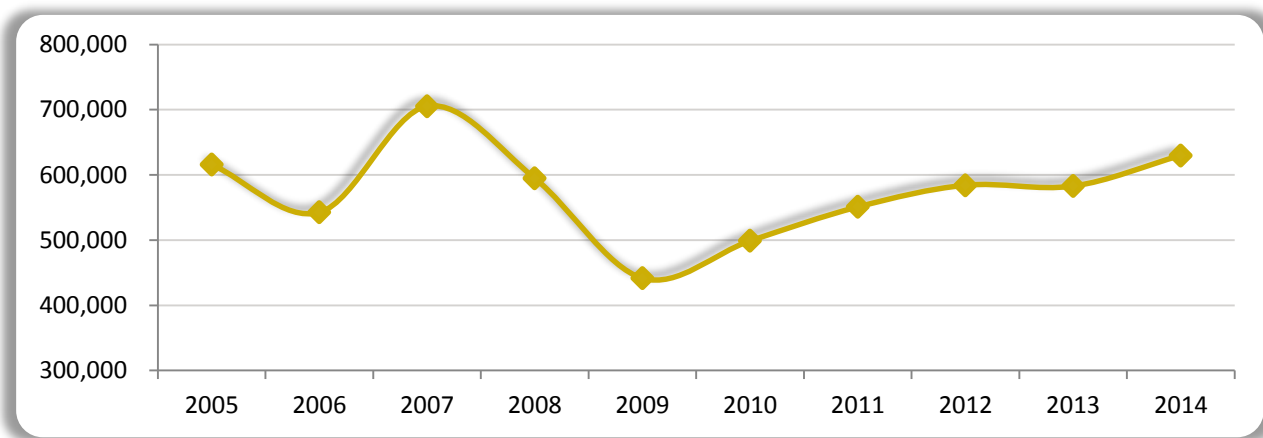
These tables show the number of passengers, tons of cargo, and operations at the Daytona Beach International Airport from 2010 to 2014:

<i>Daytona Beach Int'l</i>	<i>CY 2010</i>	<i>CY 2011</i>	<i>CY 2012</i>	<i>CY 2013</i>	<i>CY 2014</i>
Total Passengers	498,978	550,986	584,280	582,925	629,972
Tons of Cargo	90	110	120	136	138
Aircraft Operations	267,173	220,962	284,512	288,705	290,380

Source: Daytona Beach International Airport

10-Year Historic Trend - Total Passengers

This graph illustrates the 10-year total passenger trend for DAB



Central Florida MPO Alliance Regional Total (MCO, SFB, MLB, DAB)

<i>CFMPOA Region Total</i>	<i>CY 2010</i>	<i>CY 2011</i>	<i>CY 2012</i>	<i>CY 2013</i>	<i>CY 2014</i>
Total Passengers	36,909,160	37,966,824	38,105,676	37,827,866	38,974,069
Tons of Cargo	175,718	190,731	177,360	173,080	176,798
Aircraft Operations	910,837	946,481	1,052,866	981,215	922,711

Passenger Rail Service

Central Florida's passenger rail service has changed some travel patterns in the region. For decades the Central Florida region only had Amtrak as the primary passenger rail service provider. However, in May 2014 SunRail Commuter Rail Service began operating. Central Florida residents who live along the I-4 corridor now have a choice when traveling to/from work or other trip purposes. The 12 Phase I stations on the SunRail corridor connect the communities of Central Florida.

SunRail Commuter Rail

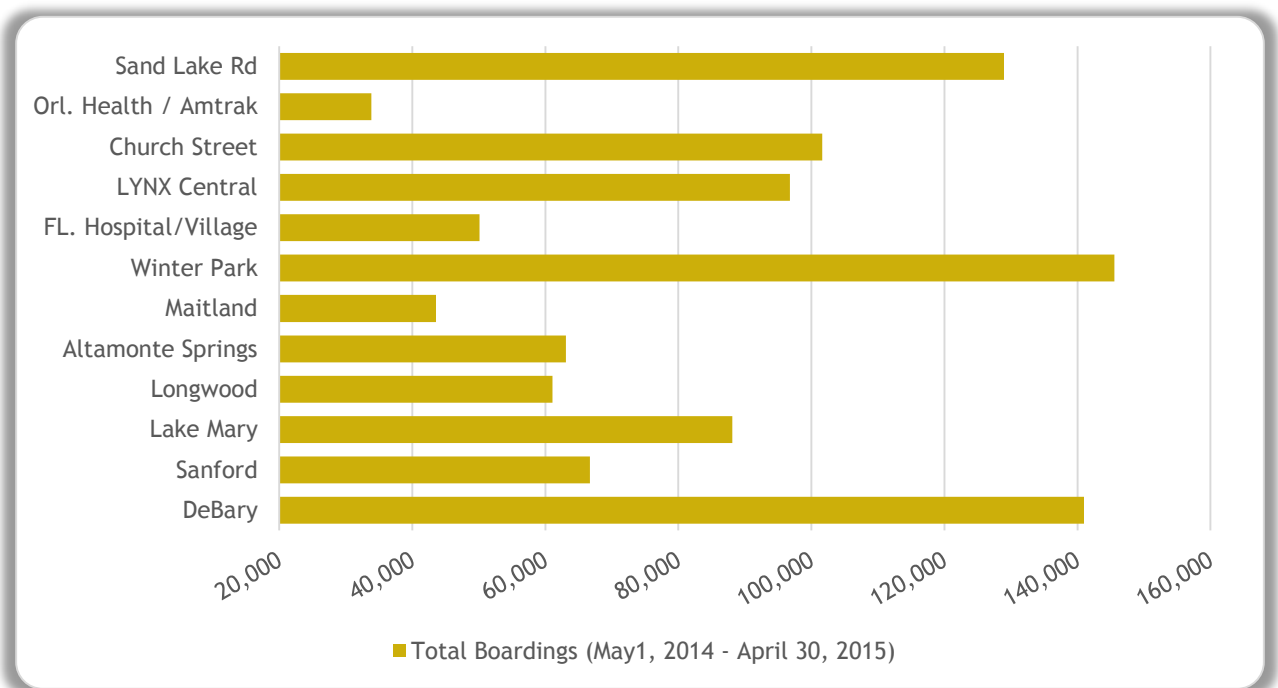


Phase 1 of SunRail comprises 31 miles with 12 stations along the former CSX Transportation "A" Line connecting Volusia County and Orange County through Downtown Orlando. The extensions proposed for Phase 2 would add a new northern terminus at DeLand and four more stations southward, terminating at Poinciana in Osceola County.

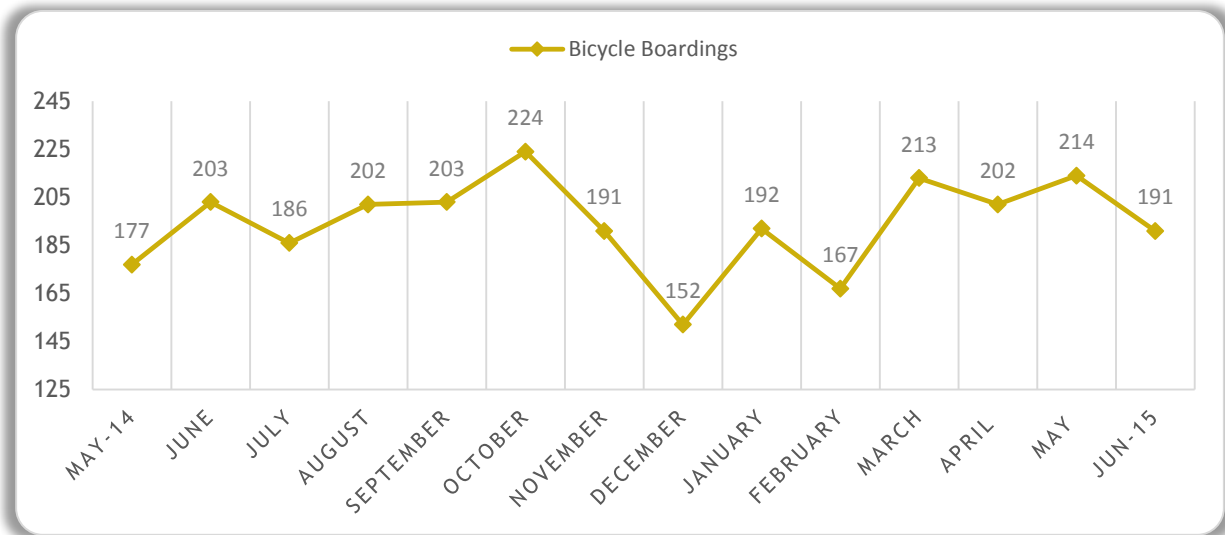
SunRail Statistics - May 2014 to April/June 2015

The following graphics show the total number of passengers by station, the number of bicyclist and ADA boarding, and on-time performance by month during the first year of SunRail service:

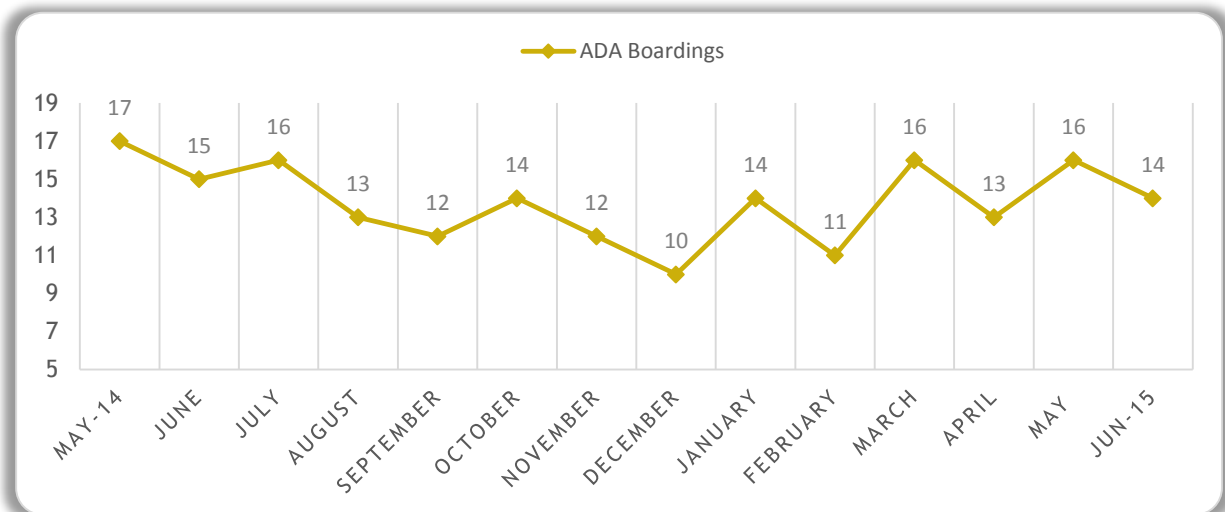
Graph 1: Total Number of passengers by Station- May 2014 to April 2015



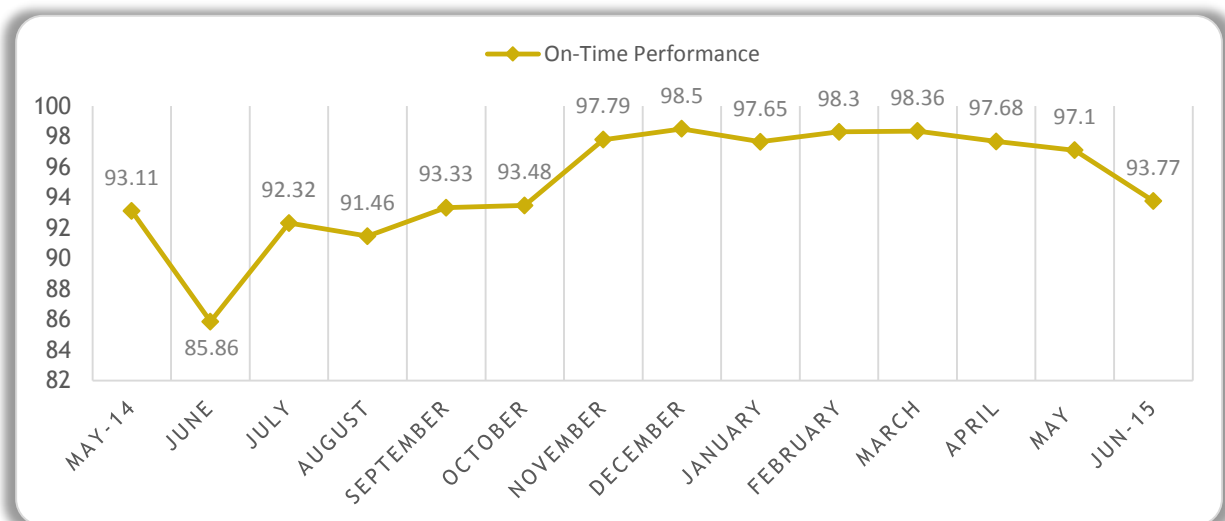
Graph 2: Total Number of Bicycle Boarding- May 2014 to June 2015



Graph 3: Total Number of ADA Boarding- May 2014 to June 2015



Graph 4: On- Time Performance- May 2014 to June 2015



Amtrak

Amtrak provides long-distance passenger rail service in Central Florida. Amtrak has stations in Deland, Winter Park, Orlando, Kissimmee, Lakeland, and Winter Haven. In addition to its regular passenger service, Amtrak's Auto Train operates daily between Lorton, Virginia (outside of Washington, D.C.) and the Auto Train terminal off I-4 and SR 46 in Sanford. These tables show the number of rail passengers who used these stations from FY 2010 through FY 2014:

<i>Amtrak - Deland</i>	<i>FY 2009/10</i>	<i>FY 2010/11</i>	<i>FY 2011/12</i>	<i>FY 2012/13</i>	<i>FY 2013/14</i>
Number of Passengers	25,982	28,663	28,553	26,502	26,063

<i>Amtrak - Kissimmee</i>	<i>FY 2009/10</i>	<i>FY 2010/11</i>	<i>FY 2011/12</i>	<i>FY 2012/13</i>	<i>FY 2013/14</i>
Number of Passengers	43,163	47,823	48,521	44,906	43,543

<i>Amtrak - Lakeland</i>	<i>FY 2008/09</i>	<i>FY 2009/10</i>	<i>FY 2010/11</i>	<i>FY 2012/13</i>	<i>FY 2013/14</i>
Number of Passengers	22,212	24,220	24,696	22,829	21,816

<i>Amtrak - Orlando</i>	<i>FY 2009/10</i>	<i>FY 2010/11</i>	<i>FY 2011/12</i>	<i>FY 2012/13</i>	<i>FY 2013/14</i>
Number of Passengers	159,533	179,124	172,502	160,442	155,532

<i>AutoTrain - Sanford</i>	<i>FY 2009/10</i>	<i>FY 2010/11</i>	<i>FY 2011/12</i>	<i>FY 2012/13</i>	<i>FY 2013/14</i>
Number of Passengers	244,252	259,944	264,096	265,274	274,445

<i>Amtrak - Winter Haven</i>	<i>FY 2009/10</i>	<i>FY 2010/11</i>	<i>FY 2011/12</i>	<i>FY 2012/13</i>	<i>FY 2013/14</i>
Number of Passengers	22,992	26,188	24,565	22,205	22,273

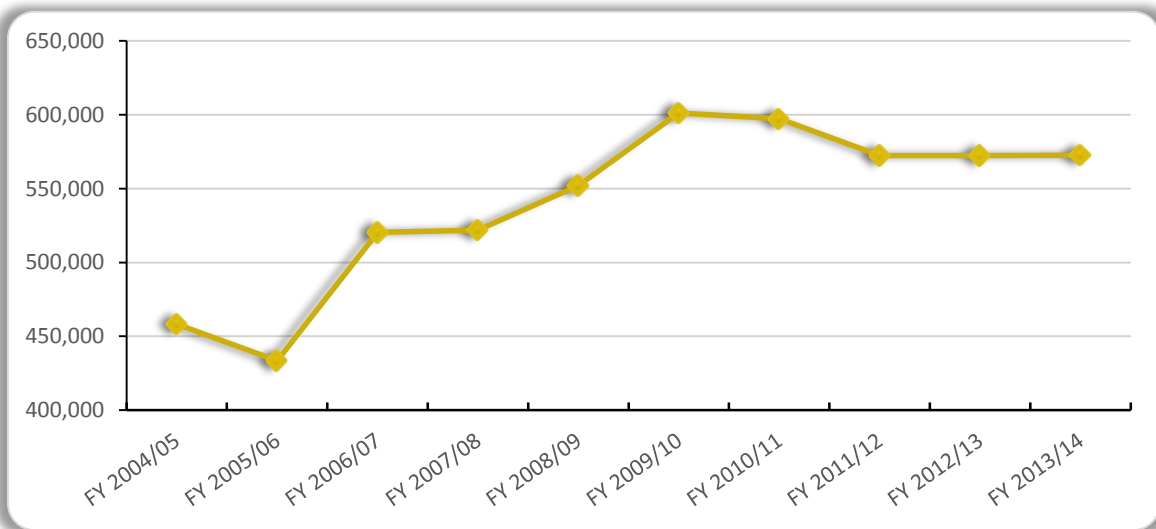
<i>Amtrak - Winter Park</i>	<i>FY 2009/10</i>	<i>FY 2010/11</i>	<i>FY 2011/12</i>	<i>FY 2012/13</i>	<i>FY 2013/14</i>
Number of Passengers	31,962	34,858	33,455	30,142	29,013

<i>Amtrak - CFMPOA Region</i>	<i>FY 2009/10</i>	<i>FY 2010/11</i>	<i>FY 2011/12</i>	<i>FY 2012/13</i>	<i>FY 2013/14</i>
Number of Passengers	552,104	601,296	597,322	572,300	572,685

Source: National Railroad Passenger Corporation d.b.a. Amtrak

10-Year Historic Trend - Amtrak Ridership

This graph illustrates the 10-year Amtrak total ridership trend for the seven stations within the CFMPOA region.



Port Canaveral Statistics

Port Canaveral is the second-busiest port in the world with its cruise lines, cargo lines and shippers capabilities. Although the port is in Brevard County, and thus outside of the Orlando Metropolitan Area, much of the cargo that is handled at the port, and many of the port's cruise ship passengers, are destined for this area. As a result, Port Canaveral is considered an important regional asset.

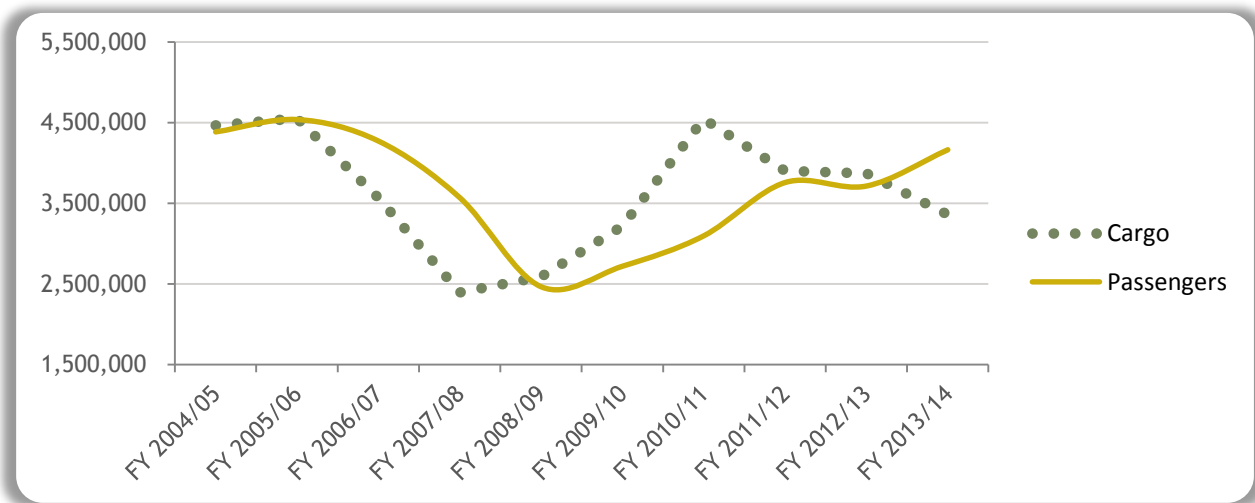
This port's freight and passenger statistics from FY 2009 through FY 2014 are shown in the following tables:

<i>Port Canaveral</i>	<i>FY 2009/10</i>	<i>FY 2010/11</i>	<i>FY 2011/12</i>	<i>FY 2012/13</i>	<i>FY 2013/14</i>
Number of Passengers	2,802,951	3,144,668	4,004,283	3,717,586	4,167,258
Tons of Cargo	3,218,144	4,547,724	3,904,986	3,874,266	3,362,281

Source: Canaveral Port Authority

10-Year Historic Trend - Port Canaveral

This graph illustrates the 10-year passenger and cargo trend for Port Canaveral.



Space Launch Statistics

A form of transportation that is unique to the CFMPOA area is space travel. The area is home to the Cape Canaveral Spaceport in Brevard County, where NASA's space launches have taken place for more than 50 years. Although The Space Shuttle program ended in 2011, it is being replaced with NASA's Commercial Crew Program (CCP). CCP is an innovative public-private partnership that helps the aerospace industry in the U.S. to develop space transportation systems that can safely launch astronauts to the International Space Station (ISS) and other low-Earth orbit destinations.

NASA has committed about \$1.5 billion to develop commercial crew systems since 2010, with most of that awarded last year to The Boeing Co., Sierra Nevada Corp. and SpaceX. These three companies hope to complete system designs in 2014 and could launch crews on test flights from Kennedy Space Center (KSC) as soon as 2015 or 2016. Meanwhile, these companies continue to test and launch cargo missions to the ISS at KSC.

The number of space launches from 2010 through 2014 is shown in the table below.

<i>Space Launches</i>	<i>CY 2010</i>	<i>CY 2011</i>	<i>CY 2012</i>	<i>CY 2013</i>	<i>CY 2014</i>
Space Shuttle	2	3	0	0	0
Satellite/Spacecraft	9	7	10	10	15
Total Launches	11	10	10	10	15

Source: Space Florida