

CENTRAL FLORIDA
MPO
ALLIANCE



A REPORT ON TRANSPORTATION SYSTEM PERFORMANCE AND
RELATED INDICATORS IN MARION, LAKE, SUMTER, VOLUSIA, BREVARD,
ORANGE, OSCEOLA, SEMINOLE, AND POLK COUNTIES

PRINTED APRIL 2012

Table of Contents

ABOUT THE CENTRAL FLORIDA MPO ALLIANCE	1
INTRODUCTION	2
REGIONAL PROFILE	
Population	3
Employment	3
Hotel/Motel Rooms	4
Licensed Drivers	4
Registered Vehicles	5
HIGHWAY STATISTICS	
Local Road Mileage	6
State Road Mileage	6
Vehicle Miles Traveled	7
Major Roadway Traffic Counts	8
Gasoline Consumption and Pricing	13
Diesel Consumption and Pricing	14
HEALTH AND SAFETY STATISTICS	
Automobile Safety	15
Bicyclist Safety	16
Pedestrian Safety	16
Air Quality Monitoring	17
TRANSIT STATISTICS	
LYNX	18
LakeXpress	18
Space Coast Area Transit	19
Votran	19
Citrus Connection	20
Polk County Transit Services	20
Sun Tran	21
AVIATION, RAIL, SEA, AND SPACE PORT STATISTICS	
Orlando International Airport (MCO)	22
Orlando-Sanford International Airport (SFB)	22
Melbourne International Airport (MLB)	23
Daytona Beach International Airport (DAB)	24
Amtrak Passenger Rail Service	25
Port Canaveral	26
Space Launches	26

About Us

The Central Florida Metropolitan Planning Organization (MPO) Alliance is a coalition of transportation and government organizations committed to addressing transportation challenges on a regional basis. The group is made up of local representatives from the Central Florida region.

The Alliance has a policy board of eighteen members, three from each of the six member organizations. Representatives from the Florida Department of Transportation participate as well. The group meets quarterly and operates on the basis of consensus. Staff support is provided by MetroPlan Orlando. The Central Florida MPO Alliance has established goals and is seeking to maximize all opportunities presented by a regional transportation forum.

MPO Staff Contact Information

Lake-Sumter MPO

(Lake and Sumter Counties)

Mr. TJ Fish, Executive Director
1616 South 14th Street
Leesburg, Florida 34748
(352) 315-0170
www.lakesumtermpo.com

Polk TPO

(Polk County)

Mr. Thomas Deardorff, Director
P.O. Box 9005; Drawer TS05
Bartow, Florida 33831
(863) 534-6486
www.polktpo.com

MetroPlan Orlando

(Orange, Osceola, and Seminole Counties)

Mr. Harold Barley, Executive Director
315 East Robinson Street, Suite 355
Orlando, Florida 32801
(407) 481-5672
www.metroplanorlando.com

Space Coast TPO

(Brevard County)

Mr. Bob Kamm, Executive Director
2725 Judge Fran Jamieson Way, Bldg. B, MS 82
Viera, Florida 32940
(321) 690-6890
www.spacecoasttpo.com

Ocala/Marion TPO

(City of Ocala and Marion County)

Mr. Greg Slay, Executive Director
P.O. Box 1270
Ocala, Florida 34478
(352) 629-8297
www.ocalamariontpo.org

Volusia County TPO

(Volusia County and the Cities of Flagler Beach and Beverly Beach within Flagler County)

Mr. Karl Welzenbach, Executive Director
2570 W. International Speedway Blvd., Ste. 100
Daytona Beach, Florida 32114
(386) 226-0422
www.volusiatpo.org

Central Florida MPO Alliance Regional Indicators Report: 2006 - 2011

Introduction

The Central Florida Metropolitan Planning Organization Alliance (CFMPOA) is a coalition of MPOs and TPOs committed to addressing transportation challenges on a regional basis. The Alliance is comprised of representatives from MetroPlan Orlando (Orange, Osceola and Seminole Counties), the Lake-Sumter MPO, the Space Coast TPO (Brevard County), the Volusia TPO, the Polk TPO, and the Ocala/Marion County TPO.

The purpose of this report is to provide an overview of the trends that have occurred over the past several years on the transportation systems within the CFMPOA region. This data is presented using various indicators of activity for these transportation modes.

This information was provided by state agencies such as the University of Florida's Bureau of Economic and Business Research, the Florida Department of Transportation, Florida's Turnpike Enterprise, and the Florida Department of Highway Safety and Motor Vehicles. Additional information was provided by the Florida Department of Environmental Protection, the Florida Department of Business and Professional Regulation, Amtrak, the Florida Department of Revenue, the Florida Research and Economic Database, the Energy Information Administration, and the National Transit Database.

Local agencies that provided information include LYNX, Space Coast Area Transit, Votran, the Lakeland Area Mass Transit District, SunTran, LakeXpress, the Greater Orlando Aviation Authority, the Sanford Airport Authority, the Melbourne International Airport, and the Daytona Beach International Airport. Additional information was provided by the Canaveral Port Authority and Space Florida.

The CFMPOA would like to express its appreciation to all of these agencies for their assistance in compiling this report.

Note: This report is prepared on an annual basis by MetroPlan Orlando staff using information provided by many different sources, as described in the previous paragraphs. This is the latest information that was available at the time of publication of this report for the various indicators used to measure transportation system activity over a five year period. The beginning and ending years vary for different indicators, depending on what year the latest data was available. For example, some indicators have data available through 2011, while for other indicators, the latest available data was for 2010 or perhaps earlier. In addition, the data for some indicators is based on calendar years, and the data for others is based on fiscal years.

CFMPOA Regional Profile

Population

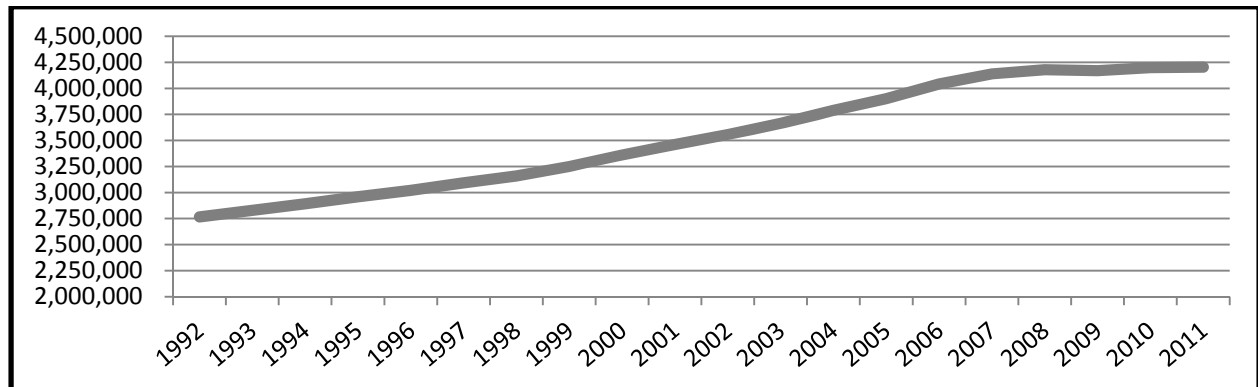
The following table shows population figures for the counties within the CFMPOA region from 2007 through 2011.

Population	2007	2008	2009	2010	2011
Brevard County	552,109	556,213	555,657	543,376	543,700
Lake County	286,499	288,379	291,993	297,052	297,336
Marion County	325,023	329,418	330,440	331,298	327,221
Orange County	1,105,603	1,114,979	1,108,882	1,145,956	1,154,852
Osceola County	266,123	273,709	272,788	268,685	273,452
Polk County	581,058	585,733	584,343	602,095	601,249
Seminole County	425,698	426,413	423,759	422,718	424,422
Sumter County	89,771	93,034	95,326	93,420	87,604
Volusia County	508,014	510,750	507,105	494,593	493,593
CFMPOA Region	4,139,898	4,178,628	4,170,293	4,199,193	4,203,429

Source: University of Florida - Bureau for Economic and Business Research (BEBR)

Historic Population Overview for the CFMPOA Region

The following line graph illustrates the 20-year population trend total for Brevard, Lake, Marion, Orange, Osceola, Polk, Seminole, Sumter, and Volusia Counties - the CFMPOA region.



Source: University of Florida - Bureau for Economic and Business Research (BEBR)

Employment

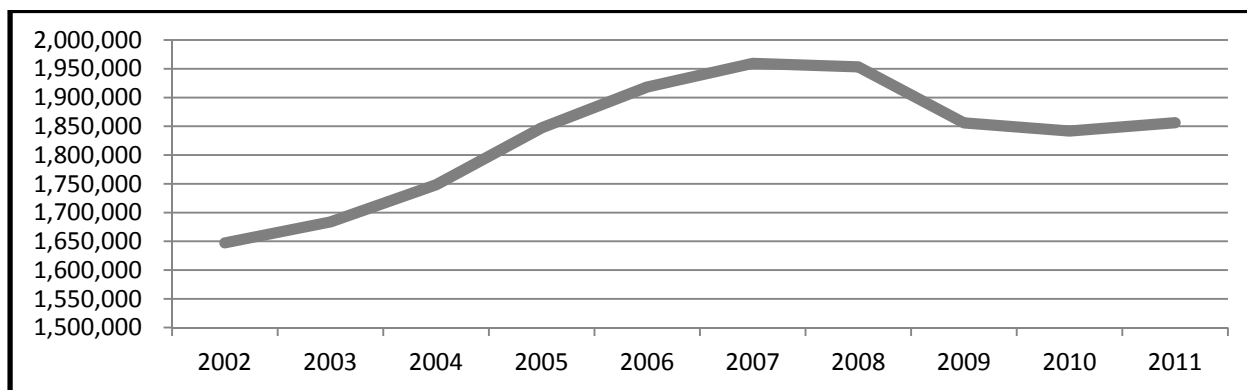
The following table shows the number of employed persons living in the CFMPOA region from 2007 through 2011:

Persons Employed	2007	2008	2009	2010	2011
Brevard County	252,822	251,186	240,547	237,219	233,232
Lake County	126,524	128,042	121,540	121,121	122,882
Marion County	130,193	127,446	118,779	116,334	116,341
Orange County	569,079	567,860	537,363	535,509	543,294
Osceola County	126,527	129,323	124,019	123,591	125,388
Polk County	254,629	254,942	243,913	240,903	241,068
Seminole County	228,776	227,608	213,889	213,151	216,249
Sumter County	30,235	29,196	29,156	30,770	31,657
Volusia County	240,680	237,721	226,649	223,067	225,993
CFMPOA Region	1,959,465	1,953,324	1,855,855	1,841,665	1,856,104

Source: Florida Research and Economic Database - Labor Market Statistics Center

Historic Employment Overview for the CFMPOA Region

The following line graph illustrates the 10-year employment trend total for Brevard, Lake, Marion, Orange, Osceola, Polk, Seminole, Sumter, and Volusia Counties - the CFMPOA region.



Source: Florida Research and Economic Database - Labor Market Statistics Center

Hotel / Motel Rooms

Both leisure and business/convention travel are important components of the region's economy. As a result, there are a large number and variety of hotel and motel facilities. The following table shows the number of hotel/motel rooms in the CFMPOA region from 2006/07 through 2010/11:

Room Capacity	2006/07	2007/08	2008/09	2009/10	2010/11
Brevard County	8,736	9,227	9,399	9,571	9,417
Lake County	2,812	2,948	2,996	3,054	2,989
Marion County	4,211	4,433	4,493	4,471	4,187
Orange County	78,698	79,297	78,472	83,021	84,046
Osceola County	26,595	26,317	26,159	26,132	25,330
Polk County	6,453	6,715	6,976	7,165	6,910
Seminole County	4,653	4,642	4,697	5,013	5,305
Sumter County	650	770	770	770	770
Volusia County	12,588	12,372	12,600	12,165	11,802
CFMPOA Region	145,396	146,721	146,562	151,362	150,756

Source: Florida Department of Business and Professional Regulation

Licensed Drivers

Along with the number of registered vehicles, the number of licensed drivers in the area is another indicator of traffic congestion levels. The following table illustrates the number of licensed drivers in the CFMPOA region from 2007 through 2011:

Licensed Drivers	2007	2008	2009	2010	2011
Brevard County	463,744	468,248	467,118	466,217	461,921
Lake County	238,782	245,189	247,957	249,179	249,085
Marion County	274,832	279,952	280,623	280,467	278,406
Orange County	866,993	874,217	875,462	876,077	880,791
Osceola County	210,472	218,137	221,244	223,721	225,934
Polk County	445,646	454,034	454,664	453,207	450,165
Seminole County	343,826	346,112	346,343	344,358	343,230
Sumter County	62,804	67,004	70,191	72,796	75,215
Volusia County	422,281	423,120	419,292	416,272	410,653
CFMPOA Region	3,329,380	3,376,013	3,382,894	3,382,294	3,375,400

Source: Florida Department of Highway Safety and Motor Vehicles

Registered Vehicles

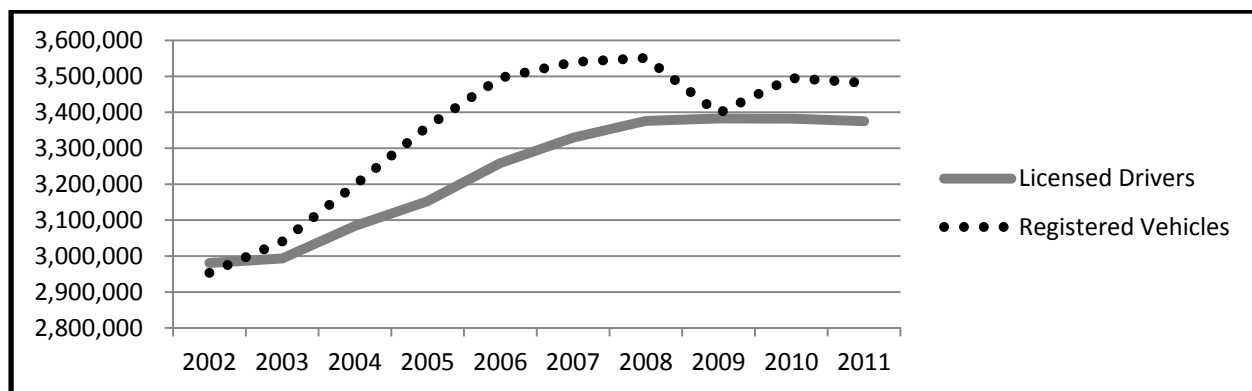
Another indicator that can be used to measure traffic congestion is the change in the number of vehicles on the highway system. The following table illustrates the number of registered motor vehicles in the CFMPOA region from FY 2006/07 through FY 2010/11:

Registered Vehicles	2006/07	2007/08	2008/09	2009/10	2010/11
Brevard County	488,800	489,793	479,526	473,167	470,263
Lake County	261,263	267,200	254,250	253,763	252,449
Marion County	290,913	290,428	283,223	274,692	272,769
Orange County	921,284	910,264	833,343	935,280	934,894
Osceola County	208,001	210,432	203,230	197,960	201,017
Polk County	469,692	475,307	466,652	452,586	449,073
Seminole County	377,072	382,442	372,063	417,023	414,074
Sumter County	60,137	63,108	63,913	68,326	70,459
Volusia County	462,118	462,134	441,457	422,345	417,244
CFMPOA Region	3,539,280	3,551,108	3,397,657	3,495,142	3,482,242

Source: Florida Department of Highway Safety and Motor Vehicles

Historic Comparison: Licensed Drivers and Registered Vehicles for the CFMPOA Region

The following line graph illustrates the 10-year comparison of licensed drivers and registered vehicles for Brevard, Lake, Marion, Orange, Osceola, Polk, Seminole, Sumter, and Volusia Counties - the CFMPOA region.



Source: Florida Department of Highway Safety and Motor Vehicles

Highway Statistics

Due to the region's steady population growth and development patterns in the past few decades, the private (and in many cases the single-occupant) automobile is the predominant mode of transportation. Among other factors, time-of-day travel demand and multi-year construction delays have led to increased congestion throughout the CFMPOA region.

Local Road Mileage (Paved Centerline Miles)

Centerline miles represent the total length of a given road from its starting point to its end point. The number and size of the lanes on that road are disregarded when calculating its centerline mileage. The table below shows the change in the number of miles of paved local roads in the CFMPOA region over the 2006-2010 timeframe, since the latest information available is for 2010. The numbers in the table reflect the centerline miles of paved roads, information that is collected annually from local governments by FDOT.

<i>Local Road Mileage</i>	<i>2006</i>	<i>2007</i>	<i>2008</i>	<i>2009</i>	<i>2010</i>
Brevard County	3,478.80	3,500.55	3,502.51	3,500.55	3,504.99
Lake County	2,301.68	2,340.53	2,363.38	2,375.92	2,384.17
Marion County	3,717.11	3,724.92	3,815.16	3,814.44	3,848.30
Orange County	3,954.80	4,073.90	4,100.40	4,118.90	4,137.50
Osceola County	1,022.70	1,133.00	1,157.10	1,164.70	1,172.60
Polk County	4,357.11	4,383.55	4,388.70	4,399.08	4,405.50
Seminole County	1,493.10	1,473.00	1,473.00	1,477.60	1,475.80
Sumter County	797.61	828.85	841.08	882.43	900.63
Volusia County	3,370.87	3,372.04	3,374.84	3,366.00	3,358.47
CFMPOA Region	24,493.8	24,830.3	25,016.2	25,099.6	25,188.0

Source: Florida Department of Transportation

State Road Mileage (Lane Miles)

Another indicator of the change in the amount of travel for the MPOs and TPOs in the CFMPOA region is the corresponding change in roadway lane mileage. Lane miles are calculated by multiplying the centerline mileage of a road by the number of lanes it has. Lane mileage provides a total amount of mileage covered by lanes belonging to a specific road. The number of lane miles of state roads in Brevard, Lake, Marion, Orange, Osceola, Polk, Seminole, Sumter, and Volusia Counties from 2007 through 2011 are shown in the tables below. These have been divided into interstate facilities (such as I-4, I-75, and I-95), toll roads (such as SR 417, SR 528, and Florida's Turnpike), and other state roads (such as SR 50, SR 46, and SR 436).

<i>MetroPlan Orlando</i>	<i>2007</i>	<i>2008</i>	<i>2009</i>	<i>2010</i>	<i>2011</i>
Interstate	328.6	316.3	316.3	316.3	316.3
Toll Roads	958.6	976.8	1,014.9	1,022.7	1,050.1
Other State Roads	1,704.2	1,709.9	1,738.0	1,746.4	1,752.9
Total	2,991.4	3,003.0	3,069.2	3,085.4	3,119.3

<i>Lake-Sumter MPO</i>	<i>2007</i>	<i>2008</i>	<i>2009</i>	<i>2010</i>	<i>2011</i>
Interstate	130.4	130.4	130.4	130.4	130.4
Toll Roads	138.2	138.2	138.2	138.2	138.2
Other State Roads	845.2	866.0	875.4	875.4	879.8
Total	1,113.8	1,134.6	1,144.0	1,144.0	1,148.4

<i>Space Coast TPO</i>	<i>2007</i>	<i>2008</i>	<i>2009</i>	<i>2010</i>	<i>2011</i>
Interstate	290.8	290.8	311.7	311.7	319.8
Toll Roads	36.6	36.6	36.6	35.9	35.9
Other State Roads	915.0	914.5	914.6	920.3	919.9
Total	1,242.4	1,241.9	1,262.9	1,267.9	1,275.6

Volusia TPO	2007	2008	2009	2010	2011
Interstate	343.8	350.8	359.4	359.4	359.4
Toll Roads	-	-	-	-	-
Other State Roads	954.2	959.4	961.8	965.6	965.7
Total	1,298.0	1,310.2	1,321.2	1,325.0	1,325.1

Note: Volusia TPO lane mileage does not include roadway portions in Flagler Beach or Beverly Beach

Polk TPO	2007	2008	2009	2010	2011
Interstate	195.4	195.4	195.4	195.4	195.4
Toll Roads	87.0	87.0	89.2	89.2	89.2
Other State Roads	1,303.2	1,325.7	1,334.2	1,336.7	1,336.7
Total	1,585.6	1,608.1	1,618.8	1,621.3	1,621.3

Ocala / Marion Co. TPO	2007	2008	2009	2010	2011
Interstate	229.7	229.7	229.7	229.7	229.7
Toll Roads	-	-	-	-	-
Other State Roads	679.2	685.3	684.9	684.1	686.8
Total	908.9	915.0	914.6	913.8	916.5

CFMPOA Region Total	2007	2008	2009	2010	2011
Interstate	1,518.7	1,513.4	1,542.9	1,542.9	1,551.0
Toll Roads	1,220.4	1,233.6	1,278.9	1,286.0	1,313.4
Other State Roads	6,401.0	6,460.8	6,508.9	6,528.5	6,541.8
Total	9,140.1	9,207.8	9,330.7	9,357.4	9,406.2

Source: Florida Department of Transportation

Vehicle Miles Traveled

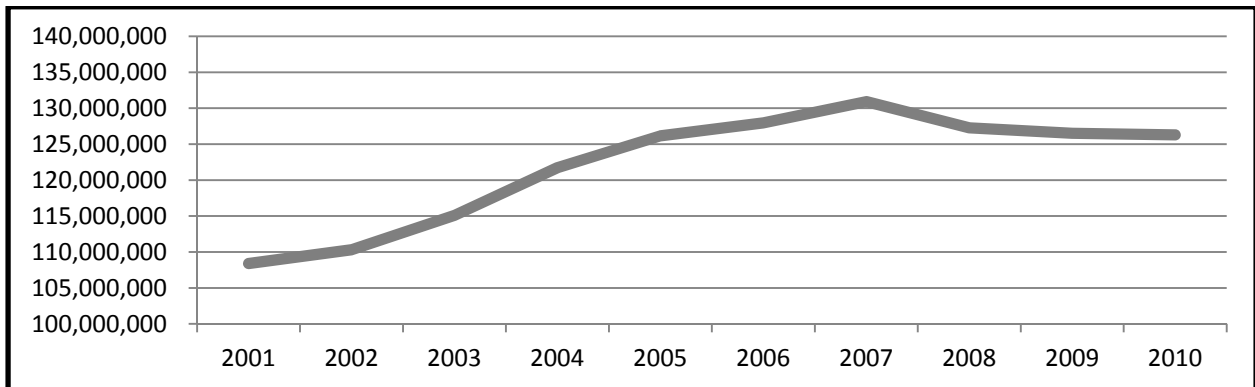
The number of vehicle miles traveled (VMT) on the highway network is an indicator that measures the growth in both the number of vehicles and the distances driven in the CFMPOA region. The Florida Department of Transportation annually estimates the VMT for all counties in the state by multiplying the lengths of the state and local roads in the counties by the average daily trips on those roads. The following tables and line graph illustrate the average daily VMTs in Brevard, Lake, Marion, Orange, Osceola, Polk, Seminole, Sumter, and Volusia Counties from 2006 through 2010:

Vehicle Miles Traveled	2006	2007	2008	2009	2010
Brevard County	18,009,541	18,144,771	17,893,256	17,355,029	17,125,596
Lake County	8,605,081	8,620,150	8,124,673	8,024,494	8,054,672
Marion County	11,814,572	11,907,543	11,397,654	11,279,407	11,067,331
Orange County	34,663,274	36,029,040	35,436,426	35,586,328	35,657,527
Osceola County	8,961,895	9,139,112	8,836,800	8,730,733	8,639,272
Polk County	16,276,399	17,268,198	16,692,962	16,410,596	16,442,305
Seminole County	10,211,094	10,325,317	9,866,475	10,262,469	10,249,225
Sumter County	3,446,939	3,512,671	3,427,152	3,367,650	3,629,402
Volusia County	15,983,717	15,967,879	15,586,786	15,501,243	15,419,863
CFMPOA Region	127,972,512	130,914,681	127,262,184	126,517,949	126,285,193

Source: Florida Department of Transportation

10-Year Historic Trend - Vehicle Miles Traveled

The following line graph illustrates the 10-year VMT trend total for Brevard, Lake, Marion, Orange, Osceola, Polk, Seminole, Sumter, and Volusia Counties - the CFMPOA region.



Source: Florida Department of Transportation

Traffic Counts - Major Roadways

One of the main methods for measuring the level of activity on an area's highway system is the collection of traffic counts on major roadways. More than 400 traffic counts for various locations in Brevard, Lake, Marion, Orange, Osceola, Polk, Seminole, Sumter, and Volusia Counties are obtained each year by the Florida Department of Transportation.

The tables shown on pages 8 - 12 contain FDOT daily (24-hour) traffic counts averaged annually on major roadways in the region from 2006 through 2010:

<i>Interstate 4</i>	<i>2006</i>	<i>2007</i>	<i>2008</i>	<i>2009</i>	<i>2010</i>
E of Hillsborough Co. Line	112,000	115,000	102,500	104,000	108,500
SW of W. Memorial Blvd.	88,000	89,000	90,000	84,500	87,000
NE of SR 539/Kathleen Rd.	76,500	79,500	76,500	76,500	79,000
NE of US 98	72,000	76,500	75,500	72,500	74,000
NE of Old Combee Rd.	69,000	75,000	62,500	64,500	65,500
E of SR 33	64,500	68,500	67,500	64,500	64,500
E of SR 559	75,000	74,000	65,000	65,500	71,500
SW of US 27	75,500	75,500	72,000	68,500	75,000
NE of US 27	88,000	100,000	100,500	95,500	99,000
SW of SR 417	95,500	79,000	78,000	78,500	85,500
at Florida's Turnpike	157,500	160,000	146,500	152,500	157,000
N of Kaley Ave.	171,000	177,500	175,000	142,500	136,500
S of SR 50	199,500	207,000	200,000	160,000	158,000
N of Princeton St.	210,000	209,000	182,500	159,500	164,000
N of Lee Rd.	200,500	208,000	205,000	160,000	170,500
S of Seminole Co. Line	163,500	162,000	149,000	158,000	149,500
N of SR 436	138,000	142,000	139,500	142,000	146,500
N of SR 434	137,100	137,300	131,600	132,500	134,000
S of CR 46A	127,500	132,000	126,500	125,000	126,500
N of SR 46	112,000	113,000	111,000	108,000	115,000
E of Enterprise Rd.	96,600	95,400	92,600	94,700	95,500
SW of SR 472	86,500	89,000	86,000	53,500	86,500
NE of SR 472	59,500	61,500	58,000	75,000	76,000
SW of SR 44	59,000	61,000	58,000	61,500	65,000
NE of SR 44	53,500	54,500	56,000	54,500	56,000
W of I-95	37,500	42,500	47,500	45,500	43,000

<i>Interstate 75</i>	<i>2006</i>	<i>2007</i>	<i>2008</i>	<i>2009</i>	<i>2010</i>
S of CR 476B	40,500	40,500	40,000	35,500	37,500
S of SR 48	39,500	37,500	38,000	36,500	34,500
S of Florida's Turnpike	44,500	43,600	40,400	41,300	41,000
S of SR 44	70,000	73,000	71,500	58,500	61,500
N of SR 44	60,500	69,500	68,000	61,500	65,000
N of Williams Rd.	82,200	82,700	74,600	76,100	77,500
S of SR 40	78,500	84,500	69,000	67,000	71,000
S of US 27	73,500	77,500	64,000	62,000	69,000
N of US 27	70,000	69,000	58,500	56,500	55,500
N of SR 326	68,000	56,500	50,000	52,500	51,500
N of CR 318	59,000	62,000	51,000	52,000	46,500

<i>Interstate 95</i>	<i>2006</i>	<i>2007</i>	<i>2008</i>	<i>2009</i>	<i>2010</i>
S of SR 514	37,500	37,800	33,400	35,600	35,500
S of CR 516	57,500	59,500	77,500	49,500	48,500
N of CR 516	69,500	83,000	80,000	78,000	78,000
N of SR 500	67,500	74,000	81,500	79,500	78,000
N of SR 518	74,500	86,000	83,000	69,500	68,500
S of Fiske Blvd.	80,000	80,000	77,000	70,000	69,000
S of SR 520	74,500	74,500	71,500	74,000	40,500
S of SR 407	42,500	45,000	41,000	38,500	39,000
N of Dairy Rd.	37,000	34,500	33,000	34,500	31,000
N of CR 5A	31,500	27,000	24,500	26,000	24,500
S of SR 44	28,500	33,500	34,000	32,000	32,000
N of SR 44	40,400	40,100	36,400	37,400	38,000
S of I-4	49,500	56,000	57,500	52,500	51,000
S of LPGA Blvd.	80,000	74,000	68,000	70,000	70,500
N of LPGA Blvd.	80,500	73,000	79,000	79,500	68,000
S of SR 5	60,000	60,000	55,000	68,500	69,000
N of SR 5	58,500	58,500	53,000	66,000	67,000

<i>Florida's Turnpike</i>	<i>2006</i>	<i>2007</i>	<i>2008</i>	<i>2009</i>	<i>2010</i>
SE of I-75	35,400	35,500	34,800	33,200	33,700
at CR 468	39,300	38,900	35,900	35,900	37,200
NW of Lake Co. Line	37,500	38,100	37,300	35,700	36,400
N of Palatka River	38,500	39,100	37,900	36,200	37,000
at Leesburg Service Plaza	32,400	33,300	32,700	31,300	31,900
S of CR 561	43,600	44,400	41,300	40,900	41,800
S of SR 50	71,900	73,900	72,200	66,900	65,700
W of SR 429	66,000	66,900	64,500	59,800	57,600
N of SR 408	102,300	104,600	104,200	99,100	96,600
at Turkey Lake Service Pl.	68,100	70,400	67,700	64,400	63,400
N of SR 528	69,600	74,500	70,500	67,600	69,400
N of of Osceola Pkwy.	56,400	62,300	57,100	54,100	55,000
S of US 441	44,400	50,200	47,900	46,000	46,700
at Partin Settlement Rd.	25,200	31,800	31,400	30,600	31,000
S of Neptune Rd.	26,900	33,000	33,900	32,400	33,100
S of 3 Lakes Toll Plaza	26,700	27,500	26,000	25,000	25,300

SR 528	2006	2007	2008	2009	2010
E of I-4	77,400	76,100	78,300	74,500	75,300
W of John Young Pkwy.	80,000	78,600	81,100	77,000	77,400
E of US 441	70,700	70,000	69,600	63,900	64,400
E of McCoy Rd.	88,500	87,600	87,100	81,100	81,200
W of SR 436	82,000	83,000	91,000	76,000	84,500
W of Goldenrod Rd.	66,800	70,000	66,000	59,600	63,000
E of Narcoossee Rd.	57,000	61,000	60,000	53,500	44,000
E of SR 417	42,000	43,000	42,000	40,500	40,000
W of SR 520	40,700	41,500	37,500	39,300	39,200
E of St. Johns River	35,000	30,000	30,500	26,500	27,500
E of I-95	28,000	25,500	24,500	20,900	22,700
W of US 1	38,500	37,500	36,000	34,000	37,500

SR 50	2006	2007	2008	2009	2010
at CR 478A	7,300	6,400	7,700	5,700	53,000
W of SR 471	8,200	7,100	9,200	6,200	6,400
W of Lake Co. Line	10,000	9,100	9,200	7,700	7,300
W of CR 565	13,000	16,500	13,100	12,000	11,200
E of CR 565	25,000	23,000	23,500	17,800	18,600
E of SR 19	30,500	27,500	24,000	22,500	21,500
W of CR 565A	23,500	24,000	22,000	23,000	23,000
W of CR 561	25,500	25,000	23,000	22,500	23,000
E of CR 561	30,000	28,500	26,500	25,500	25,500
W of US 27	37,500	35,500	34,500	31,000	30,000
W of Hancock Rd.	42,500	43,000	39,000	36,000	35,000
E of Lake Co. Line	54,000	52,500	47,500	47,000	46,000
E of CR 545	35,600	35,200	33,300	32,800	31,500
E of Old Winter Garden Rd.	44,500	44,000	39,500	38,500	34,000
E of Powers Dr.	41,500	39,500	39,500	37,000	36,000
E of John Young Pkwy.	36,000	40,500	34,500	35,000	32,000
E of Edgewater Dr.	42,500	38,500	39,000	32,500	36,500
W of US 17/92	45,000	43,500	43,000	42,000	38,000
W of SR 436	58,500	54,500	53,500	52,500	21,500
E of SR 436	41,000	41,000	40,000	39,000	24,500
E of Goldenrod Rd.	46,000	46,000	45,000	44,000	37,000
E of Dean Rd.	46,500	49,000	45,500	42,500	41,000
E of Alafaya Tr.	44,000	47,500	46,500	44,000	45,000
W of SR 520	27,000	27,200	25,500	26,200	25,600
1 mi. W of I-95	12,600	11,800	11,500	11,500	10,900
1.2 mi. E of I-95	23,000	24,000	21,500	21,000	22,900
W of US 1	15,400	16,500	15,700	16,100	12,800

<i>SR 46</i>	<i>2006</i>	<i>2007</i>	<i>2008</i>	<i>2009</i>	<i>2010</i>
W of Round Lake Rd.	10,800	10,700	10,500	10,500	10,900
E of CR 437 South	15,600	15,300	13,800	13,600	13,600
E of CR 437 North	17,200	16,400	14,900	15,000	14,300
E of Lake Co. Line	22,000	23,000	21,000	19,700	19,600
W of I-4	28,000	28,000	31,000	30,500	30,500
E of I-4	36,500	36,500	37,500	43,000	32,000
W of Airport Blvd.	31,000	31,500	29,000	27,000	28,500
W of US 17/92	19,700	17,900	19,200	17,000	16,600
E of US 17/92	15,700	18,400	19,500	15,200	16,100
E of Mellonville Ave.	20,500	16,800	15,400	15,000	14,200
W of St. Johns River	11,300	11,200	10,400	9,800	10,500
E of CR 426	6,300	6,400	6,200	5,900	5,900
2.5 mi. W of I-95	5,700	5,600	5,500	8,500	5,200
E of I-95	9,100	9,400	8,300	9,100	7,700

<i>US 441</i>	<i>2006</i>	<i>2007</i>	<i>2008</i>	<i>2009</i>	<i>2010</i>
S of CR 320	8,300	8,300	8,100	8,100	9,400
N of SR 326	25,000	25,500	24,000	23,500	23,500
S of CR 25A	26,500	27,500	24,000	25,000	24,500
N of SR 492	31,000	31,500	30,000	27,000	26,000
S of SR 40	40,000	38,500	36,500	35,500	34,500
S of CR 475	30,000	27,500	27,500	23,500	23,500
S of CR 464A	33,500	33,500	31,500	30,500	29,500
S of SE 38th Ter.	30,000	30,000	28,500	25,500	27,500
NW of CR 484	33,500	33,000	32,000	30,000	28,500
N of SE 119th Pl.	25,000	25,000	22,500	22,500	20,500
N of CR 42	27,000	26,000	25,000	25,000	27,000
S of CR 466A	36,000	34,000	32,500	30,500	31,500
N of CR 44A	50,000	47,500	46,500	46,000	42,500
NW of SR 44	32,500	32,000	29,500	30,500	29,000
E of CR 44	37,500	NA	32,000	34,300	33,800
E of CR 473	41,000	41,500	40,000	42,500	40,500
W of SR 19	41,000	42,000	40,000	42,000	30,000
W of CR 452	39,500	40,500	38,500	43,500	43,500
E of SR 19	42,000	44,500	34,500	37,000	40,000
SE of CR 44	31,500	34,500	26,000	25,500	27,500
N of SR 46	30,500	29,500	26,500	27,000	28,500
S of Lake Co. Line	25,000	25,500	25,500	27,000	25,000
NW of Plymouth- Sorrento Rd.	33,000	34,500	34,500	32,500	33,500
NW of SR 429	41,500	40,000	39,000	43,000	44,500
W of SR 436	51,000	51,500	50,500	49,500	46,000
N of Clarcona-Ocoee Rd.	34,500	31,000	32,500	27,500	29,500
N of SR 50	30,000	28,500	26,500	27,500	25,000
S of SR 50	26,500	26,000	21,500	27,000	21,500
S of Old Winter Garden Rd.	35,000	35,500	33,000	29,500	29,000
N of Holden Ave.	66,500	65,500	60,500	58,000	57,000
N of Sand Lake Rd.	59,000	58,500	53,000	53,000	50,000
N of Beachline Expy.	74,000	71,500	75,000	70,000	71,000
S of Taft-Vineland Rd.	46,000	45,500	45,000	43,000	47,000
N of Osceola Co. Line	26,000	28,000	31,000	32,000	33,000

US 192	2006	2007	2008	2009	2010
E of US 27	42,500	44,000	50,000	35,000	37,000
E of CR 545	34,500	49,000	45,500	42,500	43,000
E of SR 429	53,000	56,500	51,500	43,000	48,000
E of Formosa Gardens Blvd.	59,500	58,000	55,500	46,000	49,000
W of I-4	73,500	70,000	64,500	57,500	54,000
E of SR 535	57,500	54,000	58,000	50,500	54,000
W of Hoagland Blvd.	67,500	58,600	57,500	57,700	58,500
W of John Young Pkwy.	45,500	43,000	41,500	45,000	45,000
E of US 441	43,000	47,000	45,500	48,000	45,500
SE of Boggy Creek Rd.	36,500	44,000	39,000	42,500	38,500
NW of Neptune Rd.	39,000	47,500	42,000	44,000	42,500
E of Vermont Ave.	43,500	41,500	36,500	39,000	38,500
W of CR 534	32,000	32,000	28,000	28,500	28,000
E of CR 532	17,900	18,100	19,700	17,600	22,000
W of I-95	5,700	5,800	5,600	6,200	6,100
E of I-95	30,500	29,500	33,500	28,500	27,500
W of Babcock St.	38,500	36,500	40,500	37,000	33,000
W of US 1	18,100	17,200	18,200	16,700	17,100

US 17 / 92	2006	2007	2008	2009	2010
E of CR 555	23,500	24,000	23,000	22,000	21,900
E of Experiment Station Rd.	17,600	18,400	15,600	15,600	15,200
W of Kentucky Ave.	24,000	21,000	19,900	19,500	20,000
W of 9th St. (Haines City)	21,500	18,100	17,700	18,000	16,900
N of CR 580/Johnson Ave.	13,900	12,600	11,900	11,300	11,100
SW of CR 547	13,700	11,300	10,600	10,200	9,700
NE of CR 54	9,300	8,600	7,900	7,500	7,500
W of Pleasant Hill Rd.	28,500	26,500	25,500	26,000	26,000
S of Emmett St.	50,500	58,500	52,500	54,000	56,000
N of SR 50	29,000	28,000	27,500	25,000	27,500
S of Orange Ave.	29,500	27,500	26,000	24,500	26,000
S of Lee Rd.	35,500	35,000	35,500	32,000	31,500
N of Lake Ave.	54,500	56,000	50,500	44,000	51,000
S of Maitland Blvd.	33,000	33,000	30,000	29,500	28,500
N of Orange Co. Line	55,500	54,000	52,000	49,000	50,000
N of SR 436	56,500	52,000	51,500	50,500	52,000
N of SR 434	39,500	41,000	39,500	36,500	37,000
S of CR 427	33,000	35,500	32,000	32,500	29,500
S of Lake Mary Blvd.	37,500	40,500	37,000	35,500	35,000
S of CR 46A	26,500	26,000	24,000	21,000	21,500
N of SR 46	25,500	25,500	25,000	22,500	26,000
S of Dirksen Rd.	25,500	24,000	24,000	23,000	25,000
S of Saxon Blvd.	30,500	28,500	27,500	27,500	27,500
S of Graves Ave.	33,500	32,500	30,500	29,500	30,000
S of New York Ave.	33,500	30,000	28,000	27,500	28,000
N of Golf Club Dr.	50,000	49,500	47,500	43,500	44,000
N of SR 15A/Taylor Rd.	32,000	33,000	27,500	26,500	26,500
N of Beresford Ave.	20,000	17,900	16,800	16,400	17,300
S of SR 44/New York Ave.	18,200	16,400	15,200	14,700	15,300
S of Minnesota Ave.	19,500	18,000	18,300	16,300	16,700
N of Plymouth Ave.	26,000	25,000	26,500	23,000	22,000

Source: Florida Department of Transportation

Gasoline Consumption

The consumption of gasoline over a period of several years is another indicator of the change in the number of vehicles and amount of travel in the CFMPOA area. The following charts illustrate the number of gallons of gasoline sold in the region from FY 2006/07 through FY 2010/11.

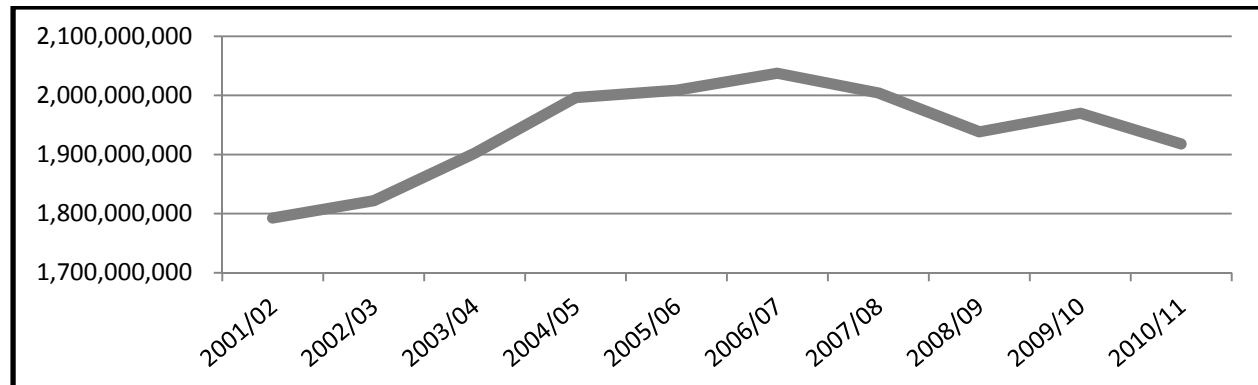
The reduction in the number of gallons sold in FY 2008/09 and FY 2010/11 illustrates the impact of the recession, high unemployment rates, the increase in fuel prices, and improved automobile fuel efficiency on gasoline consumption in the region.

Gasoline Consumption	2006/07	2007/08	2008/09	2009/10	2010/11
Brevard County	259,371,190	247,296,412	240,360,931	247,235,293	239,319,288
Lake County	130,186,041	127,055,288	126,447,865	134,025,895	133,184,333
Marion County	187,145,499	185,404,009	176,895,141	178,184,698	165,473,753
Orange County	582,936,518	589,719,332	566,155,079	570,256,543	556,088,277
Osceola County	171,159,123	156,528,720	156,882,557	160,258,482	156,866,627
Polk County	246,307,077	240,531,378	231,698,735	233,286,137	226,219,842
Seminole County	203,177,572	199,043,686	192,591,837	192,742,469	191,090,864
Sumter County	44,085,632	44,143,830	43,227,671	45,131,142	44,395,734
Volusia County	213,014,145	214,537,186	204,086,358	208,700,437	205,271,731
CFMPOA Region	2,037,382,798	2,004,259,840	1,938,346,173	1,969,821,095	1,917,910,450

Source: Florida Department of Revenue

10-Year Historic Trend - Gasoline Consumption

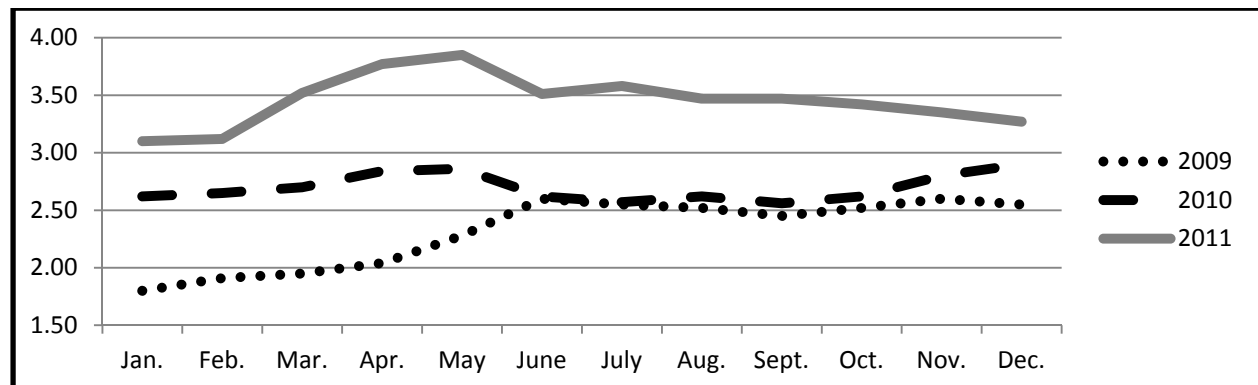
The following line graph illustrates the 10-year gasoline consumption trend total for Brevard, Lake, Marion, Orange, Osceola, Polk, Seminole, Sumter, and Volusia Counties - the CFMPOA region.



Source: Florida Department of Revenue

Average Monthly Gasoline Price per Gallon

One factor that influences the amount of gasoline consumed is the price per gallon for gasoline. The average monthly price per gallon for regular gasoline in the CFMPOA region from 2009 through 2011 is shown in the following chart.



Source: GasBuddy.com

Diesel Fuel Consumption

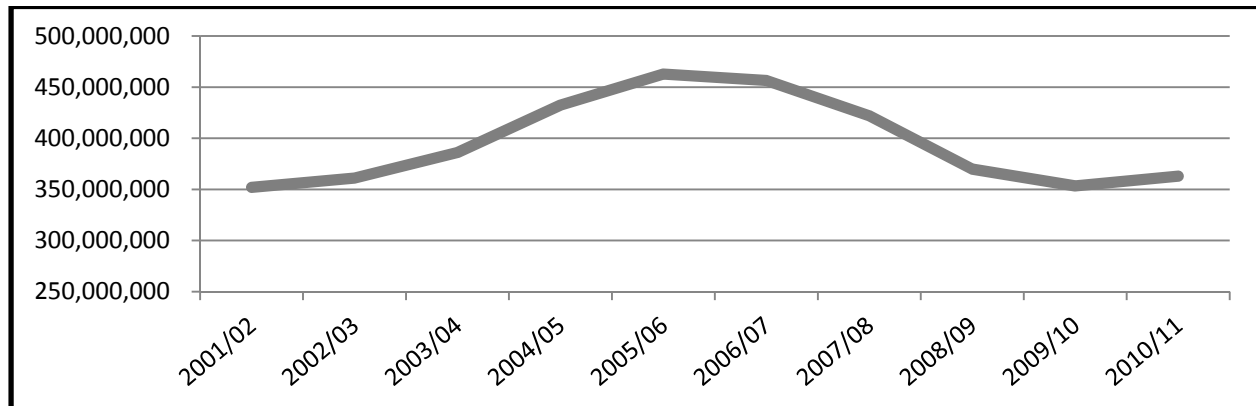
The consumption of diesel fuel over a period of several years is another indicator of the change in the number of vehicles, particularly commercial trucks, in the CFMPOA area. The following charts illustrate the number of gallons of diesel fuel sold in the region from FY 2006/07 through FY 2010/11.

Diesel Consumption	2006/07	2007/08	2008/09	2009/10	2010/11
Brevard County	40,972,456	37,893,942	33,874,396	32,236,346	37,011,535
Lake County	22,367,077	20,520,498	16,664,868	15,818,244	15,964,902
Marion County	54,003,835	50,727,923	45,172,813	41,600,329	43,320,181
Orange County	121,678,155	113,229,050	100,812,447	103,524,098	105,308,062
Osceola County	25,985,440	22,819,295	18,424,719	13,654,552	13,765,224
Polk County	96,039,589	89,288,262	77,967,742	74,058,699	76,291,043
Seminole County	26,427,473	23,707,673	19,687,696	18,171,185	15,089,335
Sumter County	34,822,955	32,977,990	30,447,980	29,251,409	30,943,770
Volusia County	34,198,443	30,734,467	26,772,817	25,007,207	25,314,809
CFMPOA Region	456,495,422	421,899,099	369,825,479	353,322,070	363,008,862

Source: Florida Department of Revenue

10-Year Historic Trend - Diesel Consumption

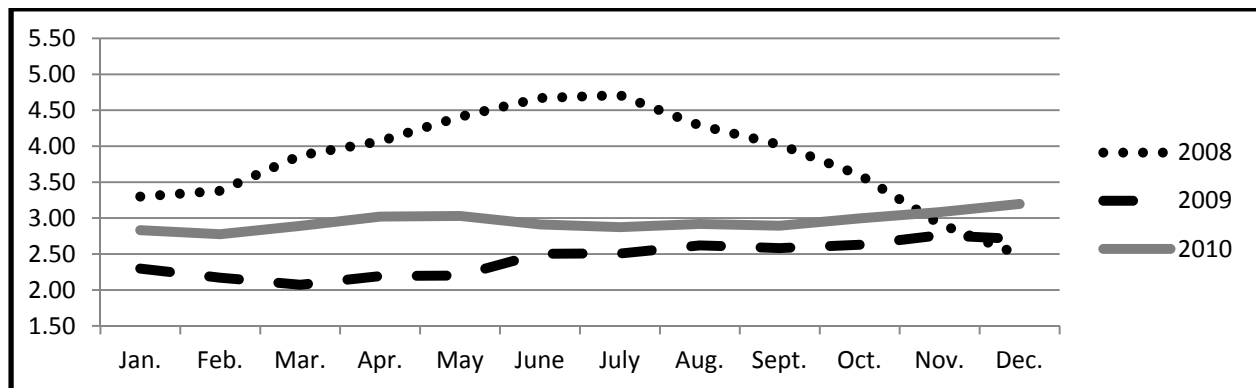
The following line graph illustrates the 10-year gasoline consumption trend total for Brevard, Lake, Marion, Orange, Osceola, Polk, Seminole, Sumter, and Volusia Counties - the CFMPOA region.



Source: Florida Department of Revenue

Average Monthly Diesel Price per Gallon

One factor that influences the amount of diesel fuel consumed is the price per gallon for diesel fuel. The average monthly price per gallon for diesel in the CFMPOA region from 2009 through 2011 is shown in the following chart.



Source: Energy Information Administration

Health and Safety Statistics

Automobile Safety Statistics

The following tables show the changes in the total number of auto occupant crashes, injuries and fatalities from 2006 through 2010 as compiled by the Florida Department of Highway Safety and Motor Vehicles for each of the nine counties:

<i>Automobile Crash</i>	<i>2006</i>	<i>2007</i>	<i>2008</i>	<i>2009</i>	<i>2010</i>
Brevard County	4,544	4,549	4,909	4,750	4,873
Lake County	2,700	2,571	2,619	2,491	2,540
Marion County	4,193	3,941	3,559	3,321	3,422
Orange County	17,506	18,089	16,712	16,092	17,090
Osceola County	3,002	3,004	2,810	2,795	3,141
Polk County	7,623	6,957	6,446	5,980	5,579
Seminole County	2,906	2,895	2,717	2,574	2,440
Sumter County	766	846	729	672	720
Volusia County	6,552	6,113	5,709	5,685	5,811
CFMPOA Total	49,792	48,965	46,210	44,360	45,616

Source: Department of Highway Safety and Motor Vehicles

<i>Automobile Injury</i>	<i>2006</i>	<i>2007</i>	<i>2008</i>	<i>2009</i>	<i>2010</i>
Brevard County	4,284	4,223	4,539	4,324	4,120
Lake County	2,523	2,323	2,503	2,299	2,432
Marion County	4,205	3,942	3,962	3,784	3,428
Orange County	15,148	15,163	14,395	14,272	14,898
Osceola County	2,978	3,144	2,664	2,634	2,933
Polk County	7,018	6,312	6,011	5,376	5,006
Seminole County	2,383	2,417	2,407	2,532	2,237
Sumter County	863	846	642	711	784
Volusia County	5,579	5,336	4,899	4,810	4,983
CFMPOA Total	44,981	43,706	42,022	40,742	40,821

Source: Department of Highway Safety and Motor Vehicles

<i>Automobile Fatality</i>	<i>2006</i>	<i>2007</i>	<i>2008</i>	<i>2009</i>	<i>2010</i>
Brevard County	98	99	81	54	65
Lake County	57	58	61	43	40
Marion County	67	66	87	61	73
Orange County	184	186	170	142	130
Osceola County	65	52	55	50	34
Polk County	159	106	133	94	85
Seminole County	39	48	42	23	32
Sumter County	25	26	17	21	23
Volusia County	122	108	109	94	105
CFMPOA Total	816	749	755	582	587

Source: Department of Highway Safety and Motor Vehicles

Bicyclist and Pedestrian Safety Statistics

The following tables show the changes in the total number of bicyclist and pedestrian injuries and fatalities from 2006 through 2010 as compiled by the Florida Department of Highway Safety and Motor Vehicles for the CFMPOA region:

<i>Bicyclist Injury</i>	<i>2006</i>	<i>2007</i>	<i>2008</i>	<i>2009</i>	<i>2010</i>
Brevard County	101	115	130	112	112
Lake County	32	28	30	18	30
Marion County	45	44	51	42	36
Orange County	282	285	280	284	295
Osceola County	39	35	41	27	54
Polk County	108	77	85	91	108
Seminole County	61	59	62	78	64
Sumter County	7	7	9	4	5
Volusia County	134	161	138	147	174
CFMPOA Total	809	811	826	803	878

Source: Department of Highway Safety and Motor Vehicles

<i>Bicyclist Fatality</i>	<i>2006</i>	<i>2007</i>	<i>2008</i>	<i>2009</i>	<i>2010</i>
Brevard County	5	7	1	1	-
Lake County	1	2	-	1	2
Marion County	2	4	6	1	1
Orange County	10	14	9	6	4
Osceola County	2	1	1	-	2
Polk County	3	3	3	3	2
Seminole County	2	-	2	-	1
Sumter County	-	1	-	-	-
Volusia County	2	3	3	1	4
CFMPOA Total	27	35	25	13	16

Source: Department of Highway Safety and Motor Vehicles

<i>Pedestrian Injury</i>	<i>2006</i>	<i>2007</i>	<i>2008</i>	<i>2009</i>	<i>2010</i>
Brevard County	149	121	163	205	167
Lake County	69	65	69	73	69
Marion County	86	99	95	94	98
Orange County	551	506	569	523	509
Osceola County	111	111	86	112	115
Polk County	176	178	167	193	178
Seminole County	96	111	112	99	76
Sumter County	14	14	11	21	15
Volusia County	235	230	230	211	194
CFMPOA Total	1,487	1,435	1,502	1,531	1,421

Source: Department of Highway Safety and Motor Vehicles

<i>Pedestrian Fatality</i>	<i>2006</i>	<i>2007</i>	<i>2008</i>	<i>2009</i>	<i>2010</i>
Brevard County	17	10	18	11	13
Lake County	3	8	10	3	9
Marion County	10	12	10	8	12
Orange County	42	40	28	32	43
Osceola County	1	7	10	5	3
Polk County	18	10	26	17	13
Seminole County	5	7	8	5	11
Sumter County	2	1	2	-	3
Volusia County	16	14	15	20	26
CFMPOA Total	114	109	127	101	133

Source: Department of Highway Safety and Motor Vehicles

Air Quality

Traffic congestion can have a major impact on air pollution levels in an urban area. The pollutant that has been a cause for concern in the Central Florida region in recent years is ground-level ozone, for which motor vehicle emissions are a primary source. The federal Environmental Protection Agency (EPA) standard for ozone was changed from 85 parts per billion to 75 parts per billion averaged over any eight-hour period. An area will be considered as nonattainment (not meeting the standard) if the average of the annual fourth highest ozone readings at any monitoring site for any three-year period exceeds the 75 parts per billion standard.

In 2009, EPA averaged the fourth-highest eight-hour average ozone readings in urban areas around the country from 2006 through 2008 to determine which areas would be declared to be in attainment with the EPA standard and which would be designated as nonattainment.

In addition, EPA is considering further tightening its ozone standards in the near future. Therefore, in order to help prevent a nonattainment designation, such measures as the expansion of flex time and telecommuting, vehicle maintenance, and the use of alternate forms of transportation are being promoted as part of a public awareness campaign.

The following table shows the fourth highest eight-hour average attainment status for each year, shown in parts per billion, for the CFMPOA region from 2007 through 2011:

<i>Ozone Monitoring</i>	<i>2007</i>	<i>2008</i>	<i>2009</i>	<i>2010</i>	<i>2011</i>
Melbourne (Brevard)	67	67	64	64	66
Freedom 7 Elem. (Brevard)	68	69	61	64	66
Lost Lake Elem. (Lake)	78	69	65	66	69
Ocala YMCA (Marion)	72	71	59	68	67
County Impound (Marion)	74	69	58	65	65
Winegard Elem. (Orange)	78	70	66	71	76
Lake Isle Estates (Orange)	76	70	65	70	78
Four Corners (Osceola)	73	71	63	67	68
Sikes Elem. (Polk)	77	69	65	64	69
Baptist Children's (Polk)	73	74	66	68	70
Seminole State (Seminole)	69	67	62	66	71
Port Orange (Volusia)	65	64	56	61	60
Daytona Blind Svc. (Volusia)	65	64	60	66	64

Source: Florida Department of Environmental Protection

Note: The three-year attainment average can be determined by averaging the last three years of ozone data for each station.

Transit Statistics

As the highway system in the CFMPOA region becomes more congested and more emphasis is put on livable communities, alternative modes of transportation are becoming an increasingly important means of transportation. Currently, the majority of transit users in the CFMPOA region are transit-dependent and rely on transit service to get to work, shopping, etc. As a result, this service is essential to the area's economy and the quality of life of many of its citizens.

Statistics combining fixed-route bus, demand-response (paratransit), and vanpool services for the transit providers in the CFMPOA region from FY 2006/07 through FY 2010/11 are shown in the tables below:

LYNX

LYNX, officially known as the Central Florida Regional Transportation Authority, provides fixed-route bus service on 65 routes throughout Orange, Osceola and Seminole Counties. LYNX also operates LYMMO, a downtown circulator system on an exclusive busway route in downtown Orlando. In addition, LYNX offers shuttle services, a transportation-disadvantaged service, an express service between Volusia County and Orlando in cooperation with Votran, and vanpooling programs.

Transit Service Supplied

<i>Vehicle Revenue Miles</i>	<i>2006/07</i>	<i>2007/08</i>	<i>2008/09</i>	<i>2009/10</i>	<i>2010/11</i>
Number of Miles	22,002,545	23,038,559	22,840,981	23,192,565	24,583,550

<i>Vehicle Revenue Hours</i>	<i>2006/07</i>	<i>2007/08</i>	<i>2008/09</i>	<i>2009/10</i>	<i>2010/11</i>
Number of Hours	1,435,122	1,549,475	1,515,885	1,524,265	1,576,812

<i>Vehicles in Max. Service</i>	<i>2006/07</i>	<i>2007/08</i>	<i>2008/09</i>	<i>2009/10</i>	<i>2010/11</i>
Number of Vehicles	462	467	466	464	485

Transit Service Consumed

<i>Passenger Miles Traveled</i>	<i>2006/07</i>	<i>2007/08</i>	<i>2008/09</i>	<i>2009/10</i>	<i>2010/11</i>
Number of Miles	159,324,353	166,769,628	151,389,724	148,294,757	156,697,957

<i>Unlinked Passenger Trips</i>	<i>2006/07</i>	<i>2007/08</i>	<i>2008/09</i>	<i>2009/10</i>	<i>2010/11</i>
Number of Unlinked Trips	26,078,255	27,235,197	24,616,414	25,719,897	27,788,543

<i>Weekday Unlinked Trips</i>	<i>2006/07</i>	<i>2007/08</i>	<i>2008/09</i>	<i>2009/10</i>	<i>2010/11</i>
Number of Unlinked Trips	84,070	87,087	78,819	82,301	89,045

Source: National Transit Database (NTD), Central Florida Regional Transportation Authority d.b.a. LYNX

LakeXpress

Lake County began the fixed-route transportation service, LakeXpress, in May 2007. The bus service runs every hour from Lady Lake to Mount Dora with circulator routes in the cities of Leesburg and Mount Dora. The fixed-route service is designed to make daily commutes along U.S. Highway 441 hassle free. In years to come, the service will be expanded to other urban areas of the county.

Transit Service Supplied

<i>Vehicle Revenue Miles</i>	<i>2006/07</i>	<i>2007/08</i>	<i>2008/09</i>	<i>2009/10</i>	<i>2010/11</i>
Number of Miles	2,051,435	2,276,388	2,304,138	2,229,240	2,097,697

<i>Vehicle Revenue Hours</i>	<i>2006/07</i>	<i>2007/08</i>	<i>2008/09</i>	<i>2009/10</i>	<i>2010/11</i>
Number of Hours	133,785	138,786	131,632	135,525	132,759

<i>Vehicles in Max. Service</i>	<i>2006/07</i>	<i>2007/08</i>	<i>2008/09</i>	<i>2009/10</i>	<i>2010/11</i>
Number of Vehicles	70	73	62	63	63

Transit Service Consumed

<i>Passenger Miles Traveled</i>	<i>2006/07</i>	<i>2007/08</i>	<i>2008/09</i>	<i>2009/10</i>	<i>2010/11</i>
Number of Miles	1,952,995	5,428,903	5,737,036	5,027,060	4,819,774

<i>Unlinked Passenger Trips</i>	<i>2006/07</i>	<i>2007/08</i>	<i>2008/09</i>	<i>2009/10</i>	<i>2010/11</i>
Number of Unlinked Trips	262,124	327,034	375,320	450,376	449,430

<i>Weekday Unlinked Trips</i>	<i>2006/07</i>	<i>2007/08</i>	<i>2008/09</i>	<i>2009/10</i>	<i>2010/11</i>
Number of Unlinked Trips	1,223	1,263	1,440	1,729	1,729

Source: National Transit Database (NTD), LakeXpress (Lake County)

Space Coast Area Transit (SCAT)

Space Coast Area Transit (SCAT) operates fixed-route bus service on 17 routes throughout Brevard County. SCAT also provides trolley, vanpool, demand-response, and paratransit services.

Transit Service Supplied

<i>Vehicle Revenue Miles</i>	<i>2006/07</i>	<i>2007/08</i>	<i>2008/09</i>	<i>2009/10</i>	<i>2010/11</i>
Number of Miles	3,886,759	3,891,240	4,067,144	4,229,611	4,126,870

<i>Vehicle Revenue Hours</i>	<i>2006/07</i>	<i>2007/08</i>	<i>2008/09</i>	<i>2009/10</i>	<i>2010/11</i>
Number of Hours	190,209	194,659	198,433	194,727	192,183

<i>Vehicles in Max. Service</i>	<i>2006/07</i>	<i>2007/08</i>	<i>2008/09</i>	<i>2009/10</i>	<i>2010/11</i>
Number of Vehicles	162	154	156	167	166

Transit Service Consumed

<i>Passenger Miles Traveled</i>	<i>2006/07</i>	<i>2007/08</i>	<i>2008/09</i>	<i>2009/10</i>	<i>2010/11</i>
Number of Miles	23,381,999	22,251,575	20,416,472	20,699,448	22,807,495

<i>Unlinked Passenger Trips</i>	<i>2006/07</i>	<i>2007/08</i>	<i>2008/09</i>	<i>2009/10</i>	<i>2010/11</i>
Number of Unlinked Trips	1,618,308	1,802,821	2,016,473	2,237,975	2,460,926

<i>Weekday Unlinked Trips</i>	<i>2006/07</i>	<i>2007/08</i>	<i>2008/09</i>	<i>2009/10</i>	<i>2010/11</i>
Number of Unlinked Trips	5,864	6,364	7,149	8,018	7,899

Source: National Transit Database (NTD), Space Coast Area Transit (SCAT)

Votran

The Volusia County Council created Volusia County's public transportation system, called Votran, in 1975. Votran is a service of Volusia County Government. Votran provides transportation to all urban areas of the county with a fleet of 55 revenue-producing fixed-route buses, four trackless trolleys, and 44 paratransit vehicles.

Transit Service Supplied

<i>Vehicle Revenue Miles</i>	<i>2006/07</i>	<i>2007/08</i>	<i>2008/09</i>	<i>2009/10</i>	<i>2010/11</i>
Number of Miles	5,807,841	5,332,768	5,076,004	5,089,310	4,934,537

<i>Vehicle Revenue Hours</i>	<i>2006/07</i>	<i>2007/08</i>	<i>2008/09</i>	<i>2009/10</i>	<i>2010/11</i>
Number of Hours	358,637	330,808	310,659	305,596	299,363

<i>Vehicles in Max. Service</i>	<i>2006/07</i>	<i>2007/08</i>	<i>2008/09</i>	<i>2009/10</i>	<i>2010/11</i>
Number of Vehicles	146	133	129	129	146

Transit Service Consumed

<i>Passenger Miles Traveled</i>	<i>2006/07</i>	<i>2007/08</i>	<i>2008/09</i>	<i>2009/10</i>	<i>2010/11</i>
Number of Miles	20,427,445	21,292,105	20,731,955	20,995,871	18,258,768

<i>Unlinked Passenger Trips</i>	<i>2006/07</i>	<i>2007/08</i>	<i>2008/09</i>	<i>2009/10</i>	<i>2010/11</i>
Number of Unlinked Trips	3,370,267	3,678,179	3,429,608	3,572,005	3,857,158

<i>Weekday Unlinked Trips</i>	<i>2006/07</i>	<i>2007/08</i>	<i>2008/09</i>	<i>2009/10</i>	<i>2010/11</i>
Number of Unlinked Trips	11,222	12,076	11,471	11,977	12,794

Source: National Transit Database (NTD), Voltran (Volusia County)

Citrus Connection

The Lakeland Area Mass Transit District d.b.a. the Citrus Connection operates 38 buses and 15 Handy buses on 13 fixed routes. Today the Citrus Connection picks up and delivers more than 6,000 people to work, play, school and other destinations every day. It also provides specialized transportation for citizens who are unable to use regular service.

Transit Service Supplied

<i>Vehicle Revenue Miles</i>	<i>2006/07</i>	<i>2007/08</i>	<i>2008/09</i>	<i>2009/10</i>	<i>2010/11</i>
Number of Miles	1,914,761	1,732,713	1,687,921	1,700,804	1,557,915

<i>Vehicle Revenue Hours</i>	<i>2006/07</i>	<i>2007/08</i>	<i>2008/09</i>	<i>2009/10</i>	<i>2010/11</i>
Number of Hours	122,941	111,535	111,328	111,727	106,439

<i>Vehicles in Max. Service</i>	<i>2006/07</i>	<i>2007/08</i>	<i>2008/09</i>	<i>2009/10</i>	<i>2010/11</i>
Number of Vehicles	38	37	36	35	36

Transit Service Consumed

<i>Passenger Miles Traveled</i>	<i>2006/07</i>	<i>2007/08</i>	<i>2008/09</i>	<i>2009/10</i>	<i>2010/11</i>
Number of Miles	9,245,605	8,879,248	8,068,044	8,172,244	8,298,927

<i>Unlinked Passenger Trips</i>	<i>2006/07</i>	<i>2007/08</i>	<i>2008/09</i>	<i>2009/10</i>	<i>2010/11</i>
Number of Unlinked Trips	1,627,429	1,707,448	1,556,405	1,572,349	1,558,035

<i>Weekday Unlinked Trips</i>	<i>2006/07</i>	<i>2007/08</i>	<i>2008/09</i>	<i>2009/10</i>	<i>2010/11</i>
Number of Unlinked Trips	5,639	5,923	5,453	5,541	5,464

Source: National Transit Database (NTD), Lakeland Area Mass Transit District d.b.a. Citrus Connection

Polk County Transit Services

Polk County Transit Services (PCTS) provides fixed-route bus service on two rural routes throughout Polk County, as well as providing fixed-route bus service on six routes in the Winter Haven urbanized area for Winter Haven Area Transit (WHAT). In addition, PCTS provides the ADA with complementary paratransit service for WHAT and is the Community Transportation Coordinator (CTC) for Polk County.

Transit Service Supplied

<i>Vehicle Revenue Miles</i>	<i>2006/07</i>	<i>2007/08</i>	<i>2008/09</i>	<i>2009/10</i>	<i>2010/11</i>
Number of Miles	661,959	806,426	1,911,551	1,893,236	1,931,472

<i>Vehicle Revenue Hours</i>	<i>2006/07</i>	<i>2007/08</i>	<i>2008/09</i>	<i>2009/10</i>	<i>2010/11</i>
Number of Hours	36,446	40,173	116,849	114,892	116,634

<i>Vehicles in Max. Service</i>	<i>2006/07</i>	<i>2007/08</i>	<i>2008/09</i>	<i>2009/10</i>	<i>2010/11</i>
Number of Vehicles	32	32	70	55	63

Transit Service Consumed

<i>Passenger Miles Traveled</i>	<i>2006/07</i>	<i>2007/08</i>	<i>2008/09</i>	<i>2009/10</i>	<i>2010/11</i>
Number of Miles	1,412,596	3,268,668	4,063,522	4,036,165	4,342,464

<i>Unlinked Passenger Trips</i>	<i>2006/07</i>	<i>2007/08</i>	<i>2008/09</i>	<i>2009/10</i>	<i>2010/11</i>
Number of Unlinked Trips	571,202	658,235	585,251	578,188	643,940

<i>Weekday Unlinked Trips</i>	<i>2006/07</i>	<i>2007/08</i>	<i>2008/09</i>	<i>2009/10</i>	<i>2010/11</i>
Number of Unlinked Trips	1,928	2,295	2,126	2,107	2,334

Source: National Transit Database (NTD), Polk County Transit Services (PCTS)

SunTran

SunTran operates fixed-route bus service on six routes in the Ocala area. The SunTran bus fleet is equipped to carry disabled passengers, who ride at reduced fares. SunTran is a cooperative effort of the Ocala/Marion County Transportation Planning Organization, Marion County, the City of Ocala, the Florida Department of Transportation and the Federal Transportation Administration.

Transit Service Supplied

<i>Vehicle Revenue Miles</i>	<i>2006/07</i>	<i>2007/08</i>	<i>2008/09</i>	<i>2009/10</i>	<i>2010/11</i>
Number of Miles	372,000	390,000	438,000	438,000	442,000

<i>Vehicle Revenue Hours</i>	<i>2006/07</i>	<i>2007/08</i>	<i>2008/09</i>	<i>2009/10</i>	<i>2010/11</i>
Number of Hours	24,000	25,200	27,600	27,600	27,950

<i>Vehicles in Max. Service</i>	<i>2006/07</i>	<i>2007/08</i>	<i>2008/09</i>	<i>2009/10</i>	<i>2010/11</i>
Number of Vehicles	5	6	6	6	6

Transit Service Consumed

<i>Passenger Miles Traveled</i>	<i>2006/07</i>	<i>2007/08</i>	<i>2008/09</i>	<i>2009/10</i>	<i>2010/11</i>
Number of Miles	1,079,877	1,224,300	1,234,200	1,211,100	1,369,500

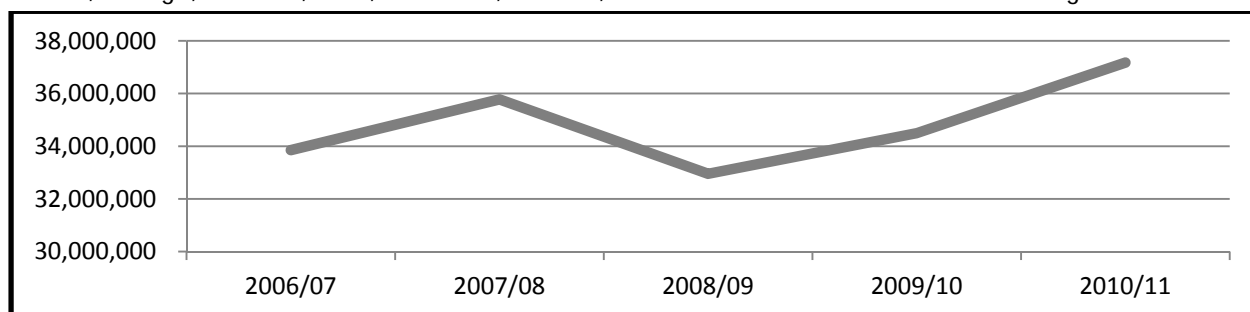
<i>Unlinked Passenger Trips</i>	<i>2006/07</i>	<i>2007/08</i>	<i>2008/09</i>	<i>2009/10</i>	<i>2010/11</i>
Number of Unlinked Trips	328,000	371,000	374,000	367,000	415,000

<i>Weekday Unlinked Trips</i>	<i>2006/07</i>	<i>2007/08</i>	<i>2008/09</i>	<i>2009/10</i>	<i>2010/11</i>
Number of Unlinked Trips	1,125	1,250	1,300	1,280	1,425

Source: National Transit Database (NTD), SunTran

Five-Year Historic Trend - Unlinked Transit Passenger Trips

The following line graph illustrates the five-year unlinked passenger trip trend total for Brevard, Lake, Marion, Orange, Osceola, Polk, Seminole, Sumter, and Volusia Counties - the CFMPOA region.



Aviation, Rail, Sea, and Space Port Statistics

Scheduled/Charter Aviation Service

Aviation is another important mode of transportation in the CFMPOA region. Due to the large number of tourists, business travelers, and residents flying to and from the Central Florida area, the region's international airports have experienced major growth during the past decade while more recently have proved to be indicators of the economy.

The CFMPOA region is served by four distinct international airports:

- Orlando International Airport, Orange County (MCO)
- Orlando-Sanford International Airport, Seminole County (SFB)
- Melbourne International Airport, Brevard County (MLB)
- Daytona Beach International Airport, Volusia County (DAB)

Orlando International Airport, Orange County (MCO)

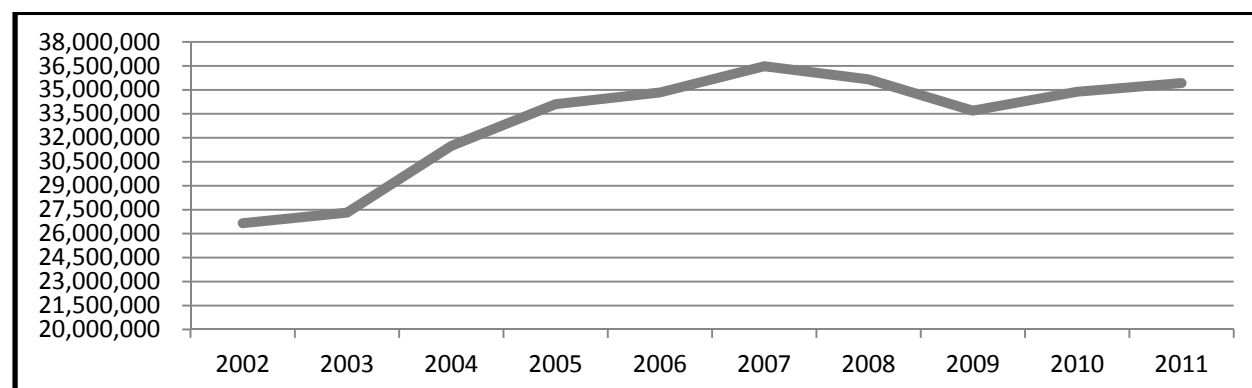
The following tables show the number of passengers, tons of cargo, and operations at the Orlando International Airport from 2007 to 2011:

<i>Orlando Int'l Airport</i>	<i>2007</i>	<i>2008</i>	<i>2009</i>	<i>2010</i>	<i>2011</i>
Total Passengers	36,480,416	35,660,742	33,693,649	34,877,899	35,426,006

Source: Greater Orlando Aviation Authority

10-Year Historic Trend - Total Passengers

The following line graph illustrates the 10-year total passenger trend for Orlando International Airport.



Source: Greater Orlando Aviation Authority

<i>Orlando Int'l Airport</i>	<i>2007</i>	<i>2008</i>	<i>2009</i>	<i>2010</i>	<i>2011</i>
Tons of Cargo	205,733	178,501	155,535	172,001	187,095

<i>Orlando Int'l Airport</i>	<i>2007</i>	<i>2008</i>	<i>2009</i>	<i>2010</i>	<i>2011</i>
Aircraft Operations	360,075	334,780	300,431	307,784	309,884

Source: Greater Orlando Aviation Authority

Orlando-Sanford International Airport, Seminole County (SFB)

The Orlando-Sanford International Airport has also grown rapidly in recent years. This airport handles international service (charter and regular scheduled) to and from Europe, as well as domestic flights to a growing number of U.S. cities. The airport also serves general aviation traffic and a flight training facility.

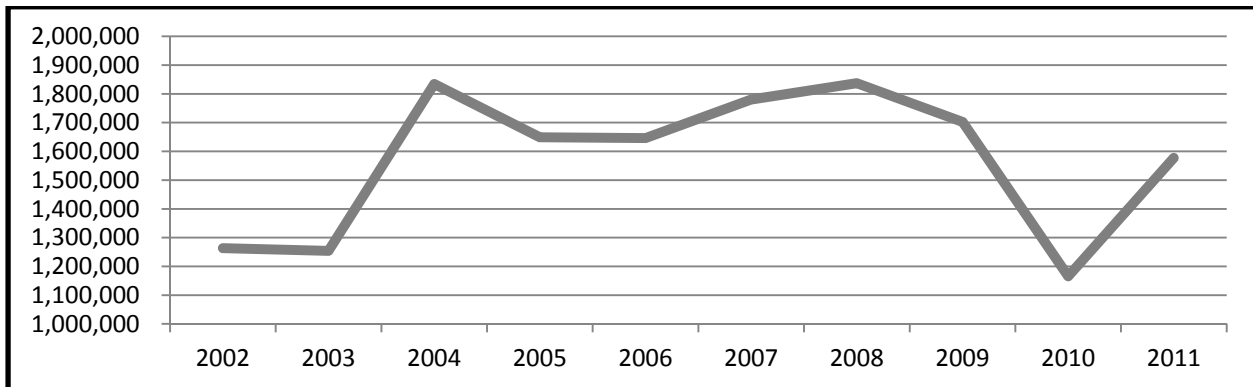
The following tables show the number of passengers, tons of cargo, and operations at the Orlando-Sanford International Airport from 2007 to 2011:

<i>Orlando-Sanford Int'l</i>	<i>2007</i>	<i>2008</i>	<i>2009</i>	<i>2010</i>	<i>2011</i>
Total Passengers	1,780,495	1,837,247	1,702,412	1,165,435	1,577,307

Source: Sanford Airport Authority

10-Year Historic Trend - Total Passengers

The following line graph illustrates the 10-year total passenger trend for Orlando-Sanford International Airport.



Source: Sanford Airport Authority

<i>Orlando-Sanford Int'l</i>	<i>2007</i>	<i>2008</i>	<i>2009</i>	<i>2010</i>	<i>2011</i>
Tons of Cargo	7,496	5,370	2,215	3,555	3,022

<i>Orlando-Sanford Int'l</i>	<i>2007</i>	<i>2008</i>	<i>2009</i>	<i>2010</i>	<i>2011</i>
Aircraft Operations	294,781	225,011	219,745	189,675	218,181

Source: Sanford Airport Authority

Melbourne International Airport, Brevard County (MLB)

The Melbourne International Airport currently operates with three runways accommodating general-aviation, commercial, and cargo aircraft. The airport has five airlines operating out of eight gates and seven jetways which provide service primarily to the eastern United States as well as the Bahamas.

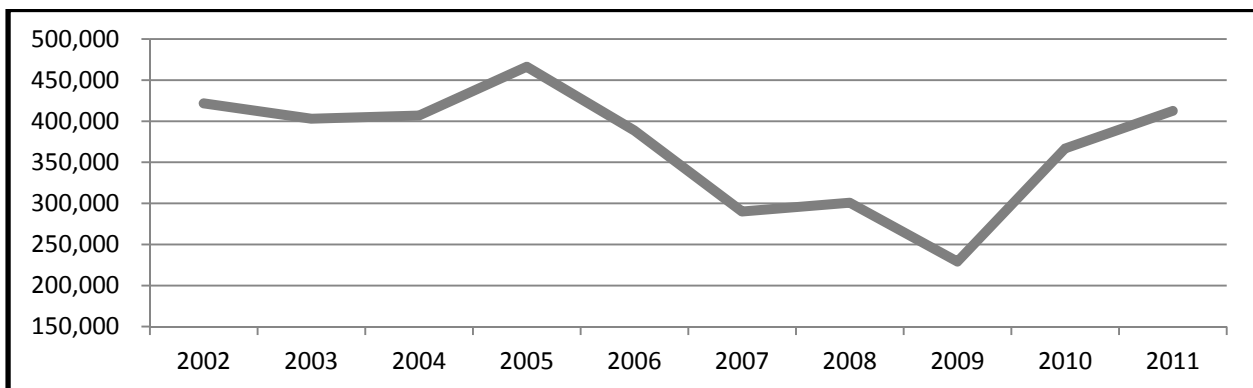
The following tables show the number of passengers, tons of cargo, and operations at the Melbourne International Airport from 2007 to 2011:

<i>Melbourne Int'l Airport</i>	<i>2007</i>	<i>2008</i>	<i>2009</i>	<i>2010</i>	<i>2011</i>
Total Passengers	290,125	300,848	229,093	366,848	412,525

Source: Melbourne Airport Authority

10-Year Historic Trend - Total Passengers

The following line graph illustrates the 10-year total passenger trend for Melbourne International Airport.



Source: Melbourne Airport Authority

<i>Melbourne Int'l Airport</i>	<i>2007</i>	<i>2008</i>	<i>2009</i>	<i>2010</i>	<i>2011</i>
Tons of Cargo	246	770	56	72	504

<i>Melbourne Int'l Airport</i>	<i>2007</i>	<i>2008</i>	<i>2009</i>	<i>2010</i>	<i>2011</i>
Aircraft Operations	163,869	146,657	141,202	146,205	197,454

Source: Melbourne Airport Authority

Daytona Beach International Airport, Volusia County (DAB)

The Daytona Beach International Airport is a 160,000 square-foot modern six-gate terminal complex. Currently, three major airlines operate out of this facility providing direct service to Atlanta and Charlotte, as well as the Bahamas.

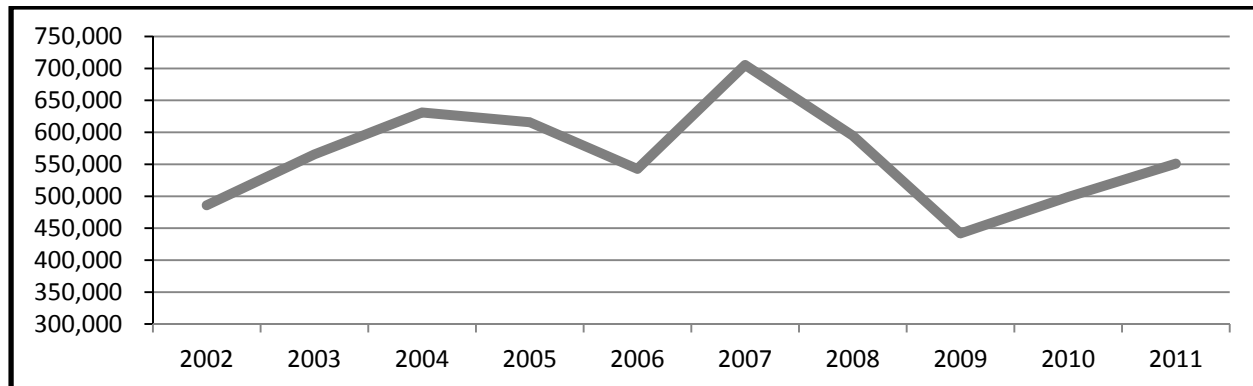
The following tables show the number of passengers, tons of cargo, and operations at the Daytona Beach International Airport from 2007 to 2011:

<i>Daytona Beach Int'l</i>	<i>2007</i>	<i>2008</i>	<i>2009</i>	<i>2010</i>	<i>2011</i>
Total Passengers	705,475	594,871	423,725	498,978	550,986

Source: Daytona Beach International Airport

10-Year Historic Trend - Total Passengers

The following line graph illustrates the 10-year total passenger trend for Daytona Beach International Airport.



Source: Daytona Beach International Airport

<i>Daytona Beach Int'l</i>	<i>2007</i>	<i>2008</i>	<i>2009</i>	<i>2010</i>	<i>2011</i>
Tons of Cargo	164	133	89	90	110

<i>Daytona Beach Int'l</i>	<i>2007</i>	<i>2008</i>	<i>2009</i>	<i>2010</i>	<i>2011</i>
Aircraft Operations	305,983	340,932	311,801	267,173	220,962

Source: Daytona Beach International Airport

Central Florida MPO Alliance Regional Total (MCO, SFB, MLB, DAB)

<i>CFMPOA Region Total</i>	<i>2007</i>	<i>2008</i>	<i>2009</i>	<i>2010</i>	<i>2011</i>
Total Passengers	39,237,876	38,379,071	36,048,879	36,909,160	37,966,824

<i>CFMPOA Region Total</i>	<i>2007</i>	<i>2008</i>	<i>2009</i>	<i>2010</i>	<i>2011</i>
Tons of Cargo	213,639	184,762	157,895	175,718	190,731

<i>CFMPOA Region Total</i>	<i>2007</i>	<i>2008</i>	<i>2009</i>	<i>2010</i>	<i>2011</i>
Aircraft Operations	1,124,708	1,047,406	973,183	910,837	946,481

Passenger Rail Service

At the present time, passenger rail service in the CFMPOA region is provided by Amtrak, which has stations in Deland, Winter Park, Orlando, Kissimmee, Lakeland, and Winter Haven.

In addition to its regular passenger service, Amtrak’s Auto Train operates daily between Lorton, Virginia (outside of Washington, D.C.) and the Auto Train terminal off I-4 and SR 46 in Sanford, Florida. This unique service carries passengers and their vehicles on a 16½ hour overnight trip from Northern Virginia to Florida. Passengers ride in Superliner coaches and sleepers, while their vehicles are transported in auto carrier cars at the rear of the train and are delivered to them upon arrival at the Sanford terminal.

The following tables show the number of rail passengers that utilized these stations from FY 2006/07 through FY 2010/11:

<i>Amtrak - Deland</i>	<i>2006/07</i>	<i>2007/08</i>	<i>2008/09</i>	<i>2009/10</i>	<i>2010/11</i>
Number of Passengers	22,077	24,854	25,965	25,982	28,663

<i>Amtrak - Winter Park</i>	<i>2006/07</i>	<i>2007/08</i>	<i>2008/09</i>	<i>2009/10</i>	<i>2010/11</i>
Number of Passengers	26,491	29,514	30,998	31,962	34,858

<i>Amtrak - Orlando</i>	<i>2006/07</i>	<i>2007/08</i>	<i>2008/09</i>	<i>2009/10</i>	<i>2010/11</i>
Number of Passengers	129,469	147,491	145,775	159,533	179,124

<i>Amtrak - Kissimmee</i>	<i>2006/07</i>	<i>2007/08</i>	<i>2008/09</i>	<i>2009/10</i>	<i>2010/11</i>
Number of Passengers	34,828	38,495	41,054	43,163	47,823

<i>Amtrak - Lakeland</i>	<i>2006/07</i>	<i>2007/08</i>	<i>2008/09</i>	<i>2009/10</i>	<i>2010/11</i>
Number of Passengers	20,276	24,179	22,212	24,220	24,696

<i>Amtrak - Winter Haven</i>	<i>2006/07</i>	<i>2007/08</i>	<i>2008/09</i>	<i>2009/10</i>	<i>2010/11</i>
Number of Passengers	17,923	21,079	22,881	22,992	26,188

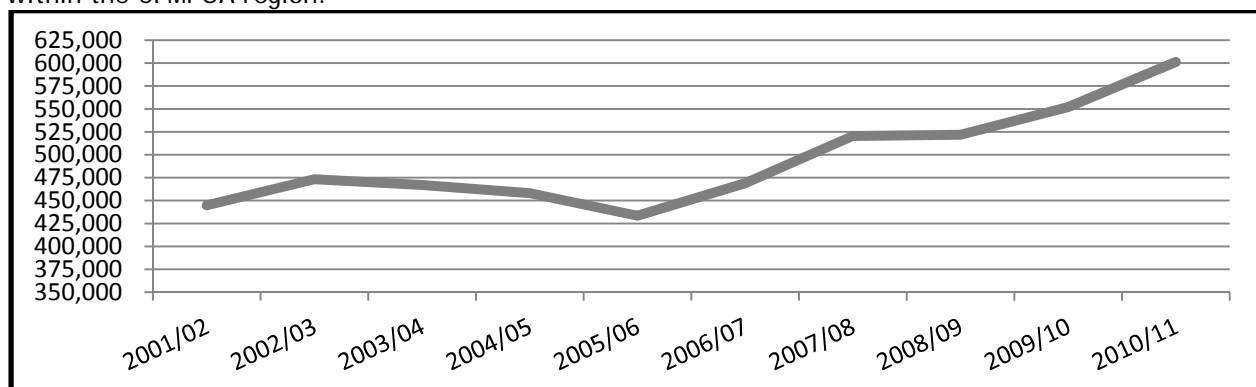
<i>AutoTrain - Sanford</i>	<i>2006/07</i>	<i>2007/08</i>	<i>2008/09</i>	<i>2009/10</i>	<i>2010/11</i>
Number of Passengers	217,822	234,839	232,955	244,252	259,944

<i>Amtrak - CFMPOA Region</i>	<i>2006/07</i>	<i>2007/08</i>	<i>2008/09</i>	<i>2009/10</i>	<i>2010/11</i>
Number of Passengers	468,886	520,451	521,840	552,104	601,296

Source: National Railroad Passenger Corporation d.b.a. Amtrak

10-Year Historic Trend - Amtrak Ridership

The following line graph illustrates the 10-year Amtrak total ridership trend for the seven stations within the CFMPOA region.



Source: National Railroad Passenger Corporation d.b.a. Amtrak

Port Canaveral Statistics

Although Port Canaveral is in Brevard County and is thus outside of the Orlando Metropolitan Area, much of the cargo that is handled at the port, and many of the port’s cruise ship passengers, are destined for this area. As a result, Port Canaveral is considered an important regional asset.

This port’s freight and passenger statistics from FY 2006/07 through FY 2010/11 are shown in the following tables:

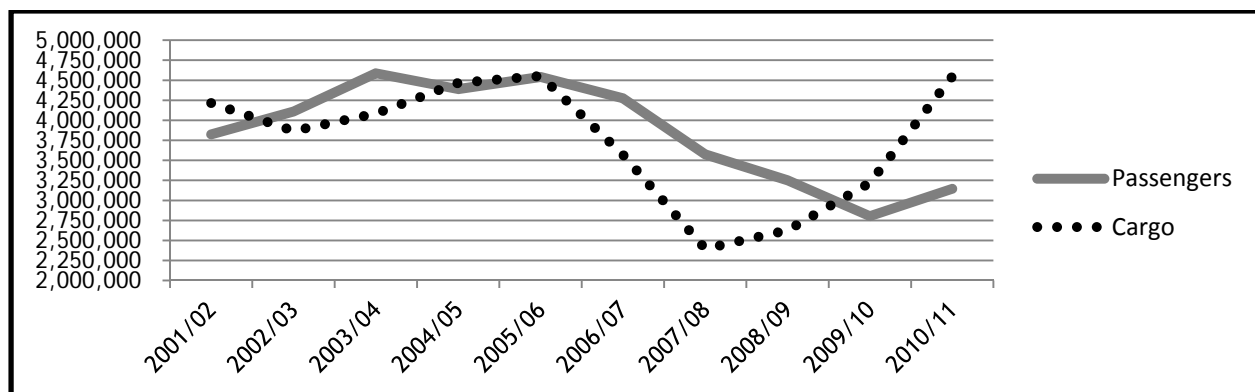
<i>Port Canaveral</i>	<i>2006/07</i>	<i>2007/08</i>	<i>2008/09</i>	<i>2009/10</i>	<i>2010/11</i>
Number of Passengers	4,275,922	3,573,960	3,250,775	2,802,951	3,144,668

<i>Port Canaveral</i>	<i>2006/07</i>	<i>2007/08</i>	<i>2008/09</i>	<i>2009/10</i>	<i>2010/11</i>
Tons of Cargo	3,572,206	2,395,779	2,626,795	3,218,144	4,547,724

Source: Canaveral Port Authority

10-Year Historic Trend - Port Canaveral

The following line graph illustrates the 10-year passenger and cargo trend for Port Canaveral.



Source: Canaveral Port Authority

Space Launch Statistics

A form of transportation that is unique to the CFMPOA area is space travel. The area is home to the Spaceport at Cape Canaveral in Brevard County, where NASA’s space launches have been occurring for more than fifty years. During that time, the space launch industry has been a major employer in Brevard County, although the Space Shuttle program is being phased out in 2011, which will result in a decrease in employment in this industry.

The number of space launches from 2007 through 2011 is shown in the table below.

<i>Space Launches</i>	<i>2007</i>	<i>2008</i>	<i>2009</i>	<i>2010</i>	<i>2011</i>
Space Shuttle	3	4	5	2	3
Satellite/Spacecraft	10	3	11	9	7
Total Launches	13	7	16	11	10

Source: Space Florida

Note: Space Shuttle Program Mission Complete as of July 2011